



70-246^{Q&As}

Private Cloud Monitoring and Operations with System Center

Pass Microsoft 70-246 Exam with 100% Guarantee

Free Download Real Questions & Answers **PDF** and **VCE** file from:

<https://www.pass4itsure.com/70-246.html>

100% Passing Guarantee
100% Money Back Assurance

Following Questions and Answers are all new published by Microsoft
Official Exam Center

- ⚙ **Instant Download** After Purchase
- ⚙ **100% Money Back** Guarantee
- ⚙ **365 Days** Free Update
- ⚙ **800,000+** Satisfied Customers



**QUESTION 1**

Your company has a private cloud that is managed by using a System Center 2012 Operations Manager infrastructure. The network contains three devices.

The devices are configured as shown in the following table.

You need to ensure that Operations Manager can discover all of the devices.

What should you do?

- A. From the Operations Manager console, create one group and set the group to Dynamic Members.
- B. From the Operations Manager console, create two Run As Accounts.
- C. From the Operations Manager Shell, run the Set-SCOMUserRole cmdlet.
- D. From the Operations Manager Shell, run the Enable-SCOMDiscovery cmdlet.

Correct Answer: B

Each SNMPv3 device would need its own run as account. As there are no SNMPv3 devices in the list only v1/v2 we need just one run as account per different community string. As there are two different community strings used for the 3 devices we need two run as accounts. <http://technet.microsoft.com/en-us/library/hh212920.aspx>

QUESTION 2

Your company has a private cloud that contains a System Center 2012 Service Manager infrastructure.

You need to create a service level objective (SLO) for incidents that have a priority value of 1.

What should you create first?

- A. A rule
- B. A service template
- C. A queue
- D. A channel

Correct Answer: C

Queues are used in SCSM 2012 SLA Management to apply the SLA to a group of work items. <http://blogs.technet.com/b/servicemanager/archive/2012/01/25/scsm-2012-service-level-management.aspx>

QUESTION 3

Your company has a private cloud that is managed by using a System Center 2012 Virtual Machine Manager (VMM) infrastructure.

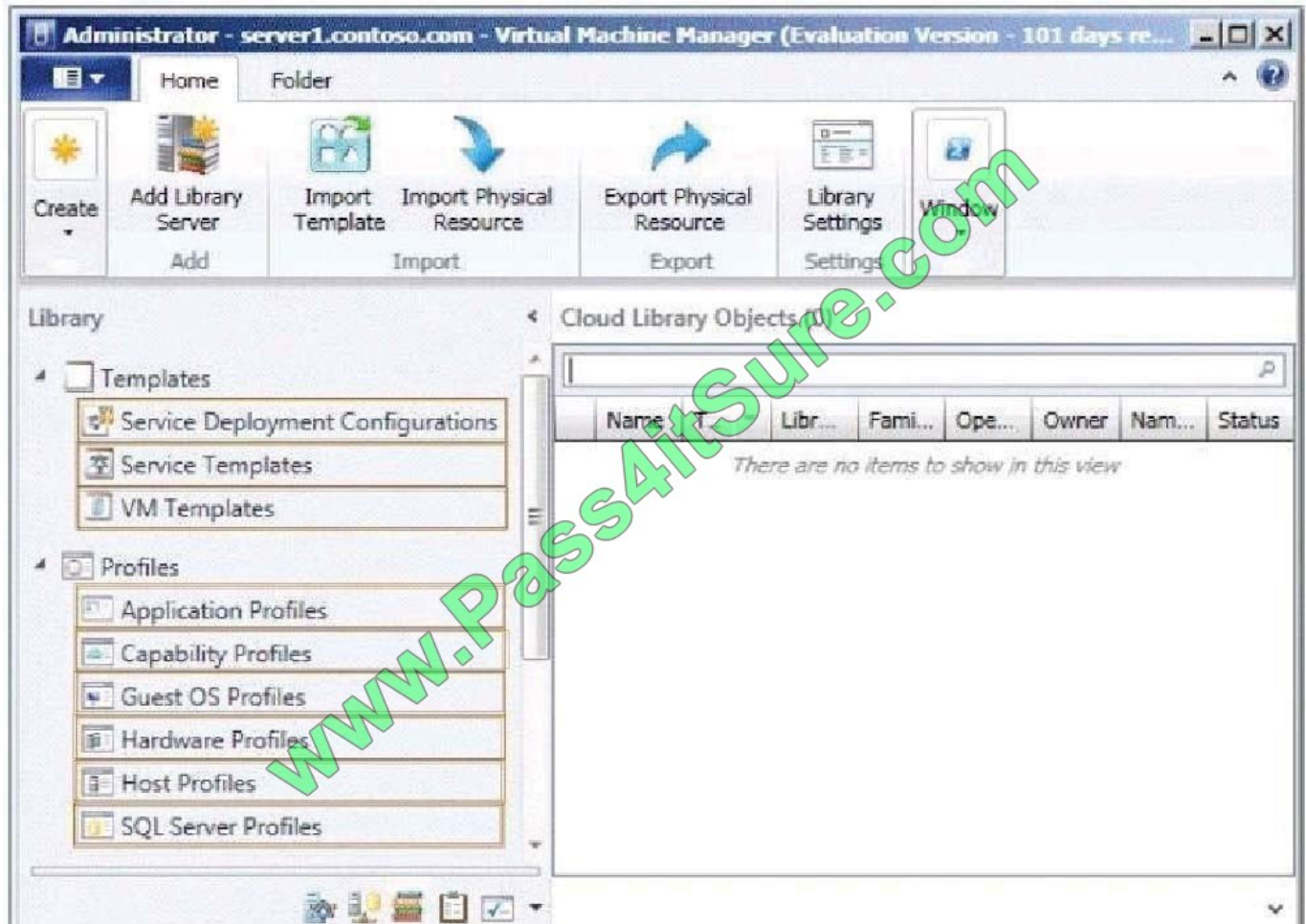


The company has multiple departments.

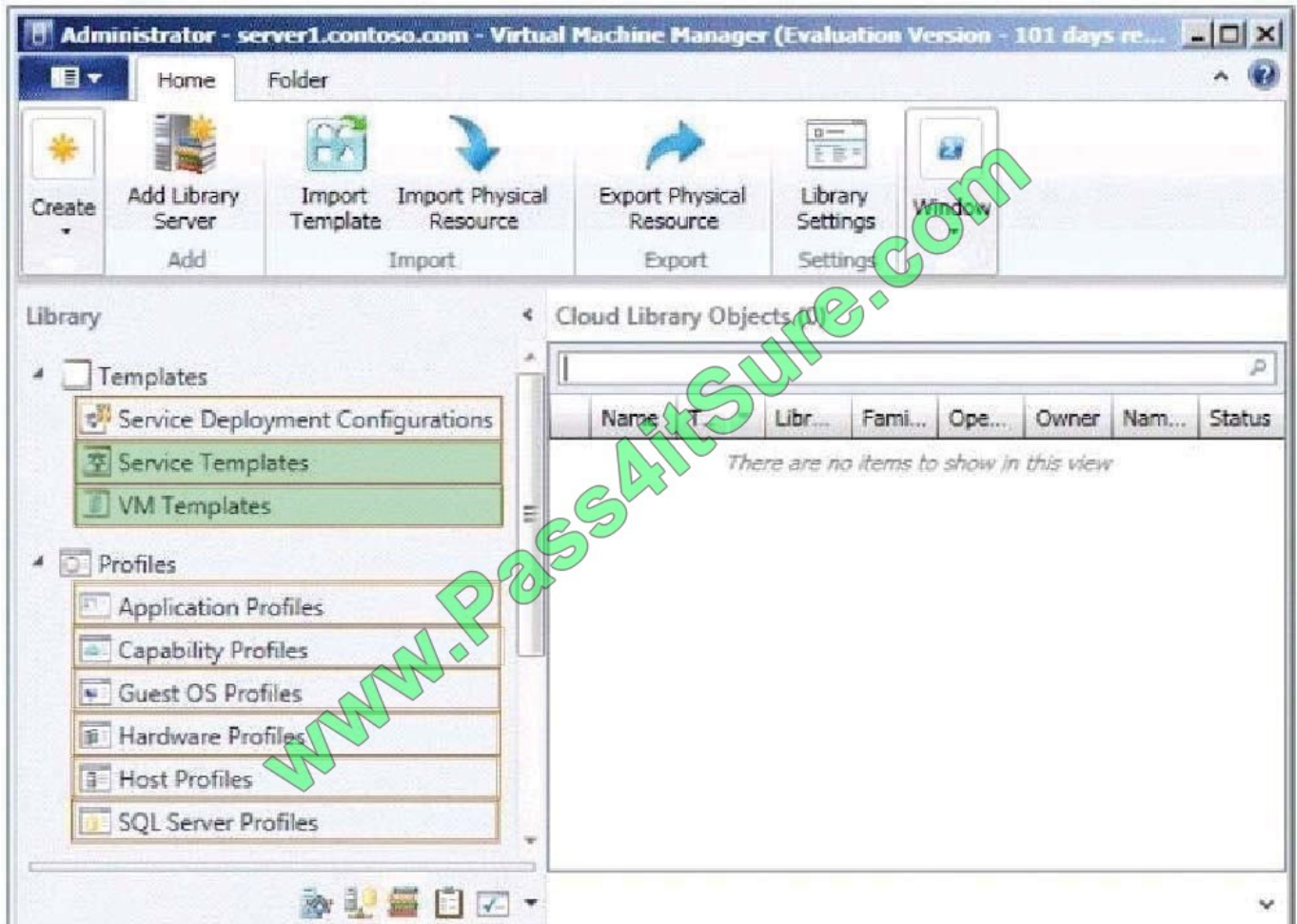
You need to deploy a two- tier web application to the departments.

Which two library objects should you create? To answer, select the appropriate library objects in the answer area.

Hot Area:



Correct Answer:

**QUESTION 4**

You have a System Center 2012 R2 infrastructure that contains three servers. The servers are configured as shown in the following table.

Server name	Component
Server1	Service Manager
Server2	Orchestrator
Server3	Virtual Machine Manager (VMM)

You need to create a self-service request offering that will allow users to provision new virtual machines.

On which server should you perform each of the following actions? To answer, select the appropriate server for each action in the answer area.

Hot Area:

**Answer Area**

Create a connector.

▼

Server1
Server2
Server3

Install the Virtual Machine Manager console.

▼

Server1
Server2
Server3

Deploy the System Center Integration Pack for System Center 2012 R2 Virtual Machine Manager (VMM).

▼

Server1
Server2
Server3

Correct Answer:

Answer Area

Create a connector.

▼

Server1
Server2
Server3

Install the Virtual Machine Manager console.

▼

Server1
Server2
Server3

Deploy the System Center Integration Pack for System Center 2012 R2 Virtual Machine Manager (VMM).

▼

Server1
Server2
Server3

QUESTION 5

You are evaluating the implementation of an Operations Manager discovery rule to support the planned changes for the third-party monitoring solution.

You need to recommend which configurations are required for the discovery rule. Which configurations should you recommend? (To answer, select the appropriate configurations in the answer area.)



Answer Area

Discovery rule type:

Run as account:

Access mode:

Hot Area:

Discovery rule type:

Explicit discovery

Recursive discovery

Run as account:

SNMP community string

Unique user identity and credential

Access mode:

ICMP

SNMP

ICMP and SNMP

Correct Answer:

Discovery rule type:

Explicit discovery

Recursive discovery

Run as account:

SNMP community string

Unique user identity and credential

Access mode:

ICMP

SNMP

ICMP and SNMP

QUESTION 6



Your company has a private cloud that is managed by using a System Center 2012 infrastructure.

The network contains a Virtual Machine Manager (VMM) infrastructure and an Operations Manager infrastructure.

You create and deploy a three-tier service to VMM.

You plan to view service diagrams in Operations Manager.

You need to identify which management packs must be imported to Operations Manager for the planned diagrams.

The solution must minimize the number of imported management packs. Which management packs should you identify? (Each correct answer presents part of the solution. Choose all that apply.)

- A. the Windows Server Operating System management pack
- B. the Internet Information Services 7 Monitoring management pack
- C. the File Services management pack
- D. the Microsoft SQL Server Monitoring Management Pack
- E. the Monitoring Pack for Active Directory (AD)
- F. the Windows Server DNS 2003/2008/2008 R2 Monitoring Management Pack

Correct Answer: ABD

Information on three-tier service in VMM: <http://blogs.technet.com/b/m2/archive/2011/03/29/how-to-deploy-thepet-shop-application-as-a-service-invmm.aspx> Three tiers are Web tier, Middle tier, and SQL tier. A) The Windows Server Operating System management pack provides the fundamental monitoring basics for computers running the Windows 2000 Server and Windows Server 2003, 2003 R2, 2008 and 2008 R2 Operating System B) The Internet Information Services Management Pack provides proactive and reactive monitoring of your Internet Information Services (IIS) environment. C) The File Services management pack retrieves events and other health information generated by the services that make up the File Services role. D) The Monitoring pack for SQL Server provides the capabilities for Operations Manager 2007 R2 and Operations Manager 2012 to discover SQL Server 2005, 2008, 2008 R2, and SQL Server 2012. It monitors SQL Server components such as database engine instances, databases, and SQL Server agents. E) The Monitoring Pack for Active Directory (AD) provides both proactive and reactive monitoring of your Active Directory deployment. F) This management Pack monitors DNS infrastructure health, availability and performance on Microsoft Windows server 2003/2008/2008 R2.

QUESTION 7

Your company has a private cloud that contains a System Center 2012 R2 infrastructure. You have a management server named Server1 that has Operations Manager installed. You have a management server named Server2 that has Virtual Machine Manager (VMM) installed.

You need to monitor network devices by using Operations Manager.

The solution must meet the following requirements:

Only provide the health status of devices located on physical networks.

Only include devices that are one hop away from a managed host. Only include devices that are part of the private cloud.



What should you use?

- A. The Fabric Health Dashboard
- B. The Microsoft System Center Advisor (SCA)
- C. The Network Vicinity Dashboard
- D. The Application Summary Dashboard

Correct Answer: A

QUESTION 8

You need to recommend a solution to monitor App2.

Which three actions should you recommend be performed in sequence? To answer, move the appropriate actions from the list of actions to the answer area and arrange them in the correct order.

Select and Place:

Actions	Answer Area
Create a Run As profile.	
Import the Alert Attachment Management Pack.	
Configure the Visual Studio Web Test Monitoring management pack template.	
Import the Windows Azure Monitoring Pack.	
Import the System Center Global Service Monitor Management Packs.	
Configure the .NET Application Performance Monitoring (APM) management pack template.	
Configure the Web Application Availability Monitoring management pack template.	

Correct Answer:



Actions	Answer Area
Import the Alert Attachment Management Pack.	Import the System Center Global Service Monitor Management Packs.
Import the Windows Azure Monitoring Pack.	Create a Run As profile.
Configure the .NET Application Performance Monitoring (APM) management pack template.	Configure the Visual Studio Web Test Monitoring management pack template.
Configure the Web Application Availability Monitoring management pack template.	

QUESTION 9

You work as a Network Administrator at ABC.com.

The network includes a System Center 2012 infrastructure. System Center 2012 - Service Manager is used by the help desk department to track any problems reported with network devices, servers or computers.

You want to be notified every time a new incident that pertains to a server problem is opened.

You open the System Center 2012 Service Manager Console.

What should you do next?

- A. You should configure an announcement.
- B. You should configure a subscription.
- C. You should configure a template.
- D. You should configure a connector.

Correct Answer: C

Although you will need a subscription to receive the messages, you need a template first (to satisfy the requirement



--You want to be notified every time a new incident that pertains to a server problem is opened")

When you create a template, you can specify a target class. The target class is used to target certain types of incidents for notifications.

<http://technet.microsoft.com/en-us/library/hh519689.aspx> And here-

<http://blogs.technet.com/b/servicemanager/archive/2009/09/28/creating-notification-templates-insystem-center-service-manager.aspx>

QUESTION 10

You need to recommend a solution to manage the changes made to the custom rules. The solution must meet the technical requirements. What should you include in the recommendation? (More than one answer choice may achieve the goal. Select the BEST answer.)

- A. Export the Operations Manager operational database.
- B. Back up the Operations Manager folder.
- C. Back up the Operations Manager data warehouse database.
- D. Export the custom management packs.

Correct Answer: D

QUESTION 11

Your company has a datacenter in Los Angeles.

The datacenter contains a private cloud that is managed by a System Center 2012 Virtual Machine Manager (VMM) infrastructure.

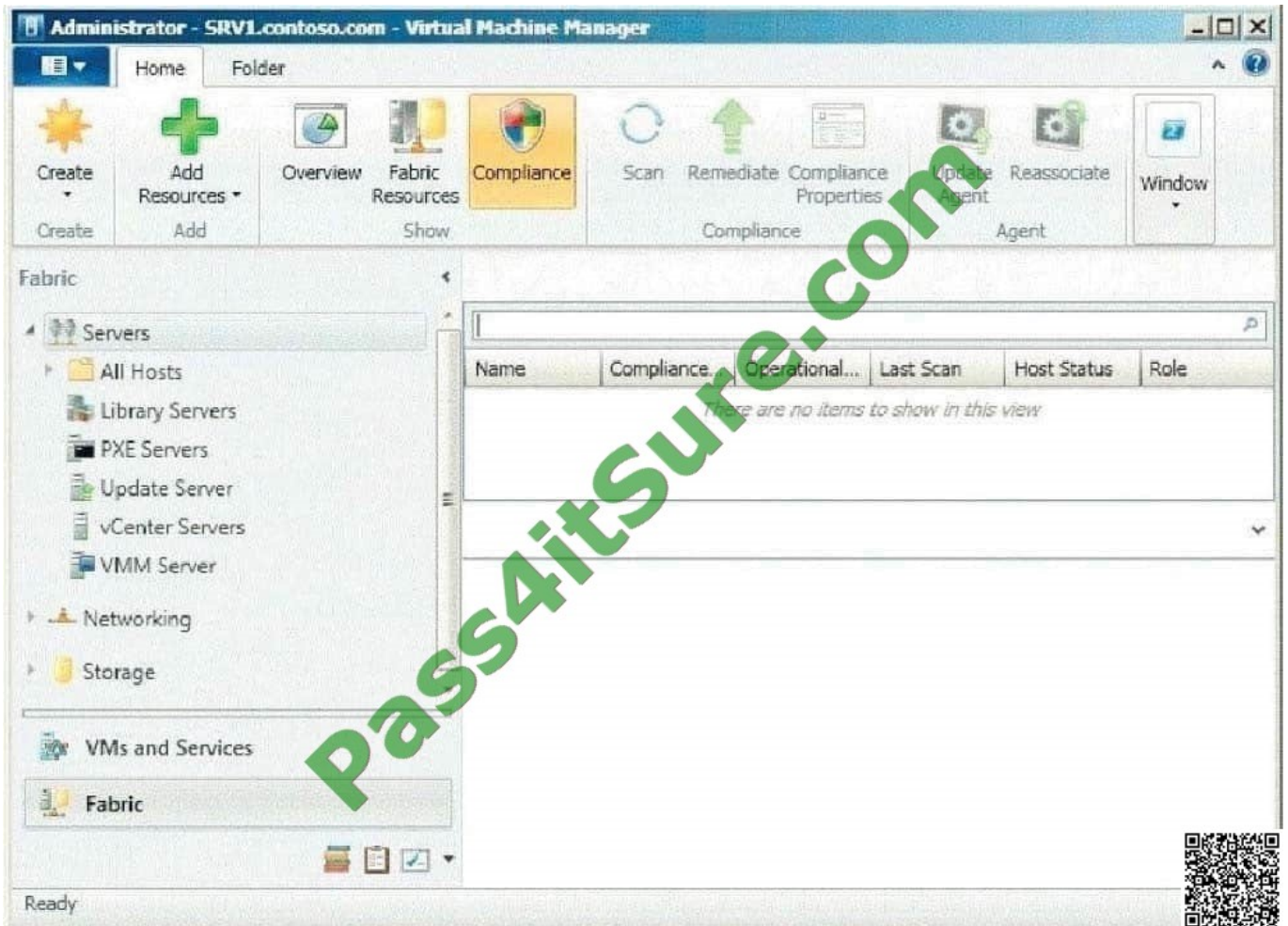
The infrastructure contains two management servers and 10 Hyper-V hosts.

You configure VMM to use an update server and to synchronize the updates by using a windows Server

Update Services (WSUS) server named WSUS1.

You attempt to verify compliance with the Sample Baseline for Security Updates.

You view the console as shown in the exhibit. (Click the Exhibit button.)



You need to ensure that you can verify compliance for all of the Hyper-V hosts. What should you modify?

- A. the update classifications of the update server
- B. the Assignment Scope of the baseline
- C. the default configuration provider
- D. the Network settings of the All Hosts host group

Correct Answer: B

In the VMM console, open the Fabric workspace.

On the Home tab, in the Add group, click Add Resources, and then click Update Server. The Add Windows Server Update Services Server dialog box opens.

In Computer name, enter the fully qualified domain name (FQDN) of the WSUS server (for example, VMMServer01.contoso.com). Specify which TCP/IP port that the WSUS website listens on for connections (for example, port 8530).

Enter credentials for connecting to the WSUS server. The account must have administrator rights on the WSUS server. If necessary, select the Use Secure Socket Layer (SSL) to communicate with the WSUS server and client's check box.



Click Add.

The WSUS server will be added to VMM, followed by initial synchronization of the updates catalog.

Depending on how many update classifications and products you chose when you installed the WSUS server, this operation can take a long time, depending on such factors as network traffic and the load on the WSUS server.

To find out the status of the operation, monitor the status of the Add Update Server and Synchronize Update Server jobs in the Jobs window or in the Jobs workspace.

Note

After you enable update management in VMM, you should manage the WSUS server only through VMM, unless you are using a WSUS server in a Configuration Manager environment. To verify that the WSUS server was added to VMM

successfully:

In the Fabric workspace, on the Fabric pane, expand Servers, and click Update Server.

The results pane should display the WSUS server.

In the Library workspace, on the Library pane, expand Update Catalog and Baselines, and then click Update Catalog.

The results pane should display the updates that were downloaded during WSUS synchronization.

QUESTION 12

You need to recommend a solution to meet the monitoring requirements for App2. Which Operations Manager management pack should you recommend importing?

- A. The VMM 2012 management pack
- B. The Windows Server Hyper-V Management Pack
- C. The Microsoft Application Virtualization 4.5 (App-V) Monitoring Management Pack
- D. The Monitoring Pack for Server App-V management pack

Correct Answer: D

And according to the download pages, only the Server App-V MP is for SCOM 2007 or later (which is also later released).

<http://www.microsoft.com/en-us/download/details.aspx?id=23024> (only 2007) <http://www.microsoft.com/en-us/download/details.aspx?id=30003> (2007 or later) <http://technet.microsoft.com/en-us/magazine/jj819422.aspx>

[Latest 70-246 Dumps](#)

[70-246 Exam Questions](#)

[70-246 Braindumps](#)



To Read the [Whole Q&As](#), please purchase the [Complete Version](#) from [Our website](#).

Try our product !

100% Guaranteed Success

100% Money Back Guarantee

365 Days Free Update

Instant Download After Purchase

24x7 Customer Support

Average 99.9% Success Rate

More than 800,000 Satisfied Customers Worldwide

Multi-Platform capabilities - [Windows](#), [Mac](#), [Android](#), [iPhone](#), [iPod](#), [iPad](#), [Kindle](#)

We provide exam PDF and VCE of Cisco, Microsoft, IBM, CompTIA, Oracle and other IT Certifications. You can view Vendor list of All Certification Exams offered:

<https://www.pass4itsure.com/allproducts>

Need Help

Please provide as much detail as possible so we can best assist you.

To update a previously submitted ticket:



 One Year Free Update <p>Free update is available within One Year after your purchase. After One Year, you will get 50% discounts for updating. And we are proud to boast a 24/7 efficient Customer Support system via Email.</p>	 Money Back Guarantee <p>To ensure that you are spending on quality products, we provide 100% money back guarantee for 30 days from the date of purchase.</p>	 Security & Privacy <p>We respect customer privacy. We use McAfee's security service to provide you with utmost security for your personal information & peace of mind.</p>
---	---	--

Any charges made through this site will appear as Global Simulators Limited.

All trademarks are the property of their respective owners.

Copyright © pass4itsure, All Rights Reserved.