



# 650-127<sup>Q&As</sup>

Cisco Connected Grid (Engineer) Knowledge Verification

## Pass Cisco 650-127 Exam with 100% Guarantee

Free Download Real Questions & Answers **PDF** and **VCE** file from:

<https://www.pass4itsure.com/650-127.html>

100% Passing Guarantee  
100% Money Back Assurance

Following Questions and Answers are all new published by Cisco  
Official Exam Center

-  **Instant Download** After Purchase
-  **100% Money Back** Guarantee
-  **365 Days** Free Update
-  **800,000+** Satisfied Customers





### QUESTION 1

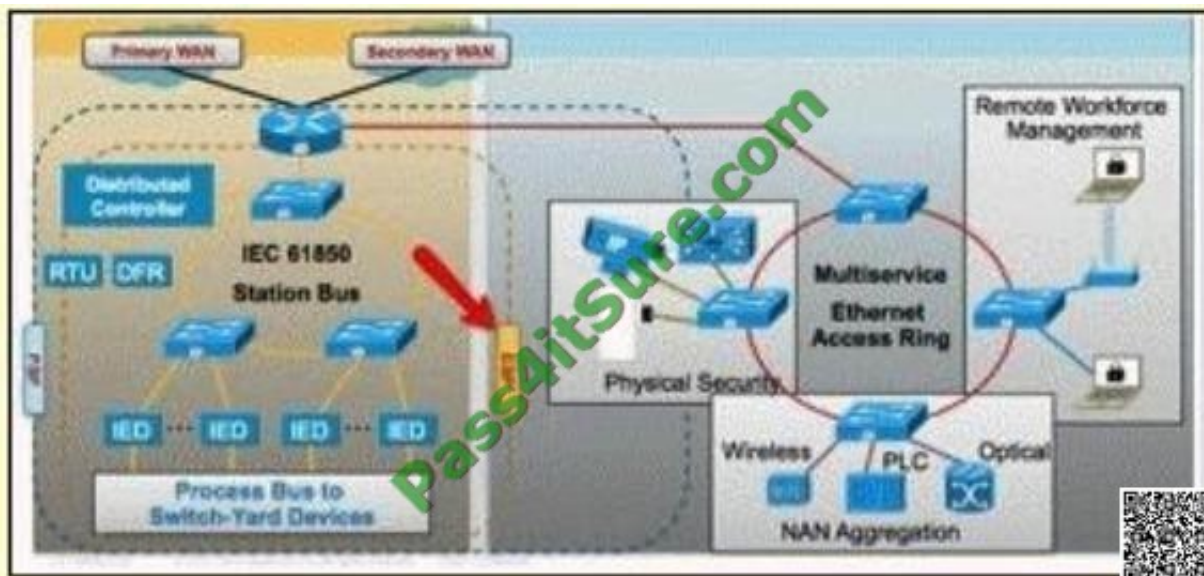
Which product is included in the Cisco Smart Grid product offerings?

- A. ISR 2900 Series and Catalyst 2960
- B. All existing Cisco products
- C. Connected Grid Router CGR 2010 and Connected Grid Switch CGS 2520
- D. Smart Grid 3000 ruggedized switching platform

Correct Answer: C

### QUESTION 2

Refer to the exhibit. What does "ESP" represent?



- A. electronic substation protocol
- B. external substation protection
- C. electronic security perimeter
- D. external security perimeter

Correct Answer: C

### QUESTION 3



What are features controlled on the Cisco CGR 2010?

- A. PAK license
- B. license soft key
- C. ISO image
- D. hardware key

Correct Answer: B

#### QUESTION 4

Which of the following models supports Power over Ethernet?

- A. CGS-2520-24TC
- B. CGS-2520-16S-8PC
- C. All CGS models
- D. None of the model supports POE

Correct Answer: B

## Power Over Ethernet Support

- PoE is supported only in CGS-2520-16S-8PC.
- Architecture is similar to Catalyst 3750E family switches.
- One Power Supply can support up to 65W and two Power Supplies support up to 170W of PoE.
- Powering all the 8 FE ports will require 2 Power Supplies.
- If one Power Supply fails, ports configured as "priority ports" will continue to receive power. The low priority PoE ports may not get PoE or lose power.
- Enhanced PoE is supported – up to 20 Watts.
- PoE+ will not be supported at FCS.



**QUESTION 5**

Which SFP modules are supported on CGR and CGS products?

- A. all SFP made by Cisco
- B. only rugged models made by Cisco
- C. all SFP on the market
- D. all ruggedized models that support NERC/C1P compliance

Correct Answer: B

## Cisco CGR 2010 Supported Ruggedized SFPs

Part #	Dual-Purpose Ports Cisco CGR 2010
GLC-SX-MM-RGD	Yes
GLC-LX-SM-RGD	Yes
GLC-FE-100LX-RGD	Yes
GLC-FE-100FX-RGD	Yes
GLC-ZX-SM-RGD	Yes

Non-Ruggedized SFPs will not be supported in the first release

**QUESTION 6**

What GRWIC module is available for CGR2010?

- A. Cable modem module
- B. LMR module
- C. one- and two-port TI/EI modules
- D. VMSS module
- E. 802.11 wireless module

Correct Answer: C



### QUESTION 7

Which section of NERC-CIP specifies physical security requirements?

- A. section 3
- B. section 7
- C. section 6
- D. section 4
- E. section 5

Correct Answer: C

---

### QUESTION 8

What is the function of security event data processed in real time for incident response and threat management?

- A. Cisco Physical Access Manager Client
- B. Video Surveillance Operation Manager
- C. Security Information Management
- D. Security Event Management

Correct Answer: C

---

### QUESTION 9

Which solution will allow remote engineering support for trouble or fault analysis?

- A. remote engineering access (VPN)
- B. network security
- C. physical access control
- D. network security

Correct Answer: A

---

### QUESTION 10

By 2015, how big is the Smart Grid market estimated to be (Pike Research estimate)?

- A. 500 Billion Dollars

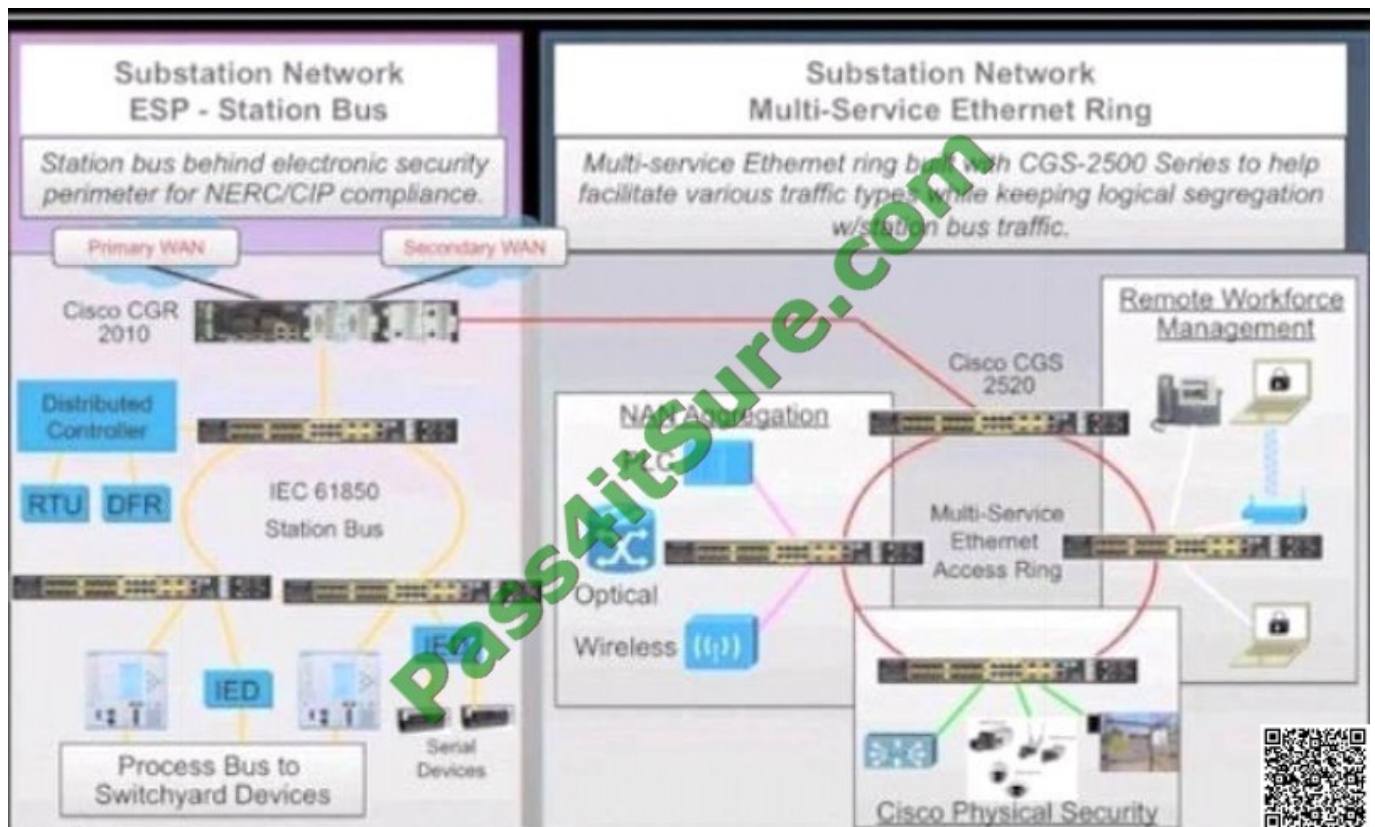


- B. 200 Billion Dollars
- C. 400 Billion Dollars
- D. 300 Billion Dollars
- E. 100 Billion Dollars

Correct Answer: B

The answer to this question can be find in the Cisco Training material, module 1, second slide, available through the Partner education connection.

#### QUESTION 11



Which trend is driving the move toward Smart Grid?

- A. increases in supply, which requires the integration of distributed generation sources
- B. increasing carbon footprint
- C. compliance with regulations involving government funding and rules
- D. reduced demand, which causes an increase in demand and peak load

Correct Answer: C



### QUESTION 12

Which of the following is not a supported PDI Help Desk function?

- A. design and configuration support
- B. technical product
- C. implementation questions and support
- D. On site support
- E. RFP review

Correct Answer: D

[Latest 650-127 Dumps](#)

[650-127 VCE Dumps](#)

[650-127 Exam Questions](#)



To Read the [Whole Q&As](#), please purchase the [Complete Version](#) from [Our website](#).

## Try our product !

100% Guaranteed Success

100% Money Back Guarantee

365 Days Free Update

Instant Download After Purchase

24x7 Customer Support

Average 99.9% Success Rate

More than 800,000 Satisfied Customers Worldwide

Multi-Platform capabilities - [Windows](#), [Mac](#), [Android](#), [iPhone](#), [iPod](#), [iPad](#), [Kindle](#)

We provide exam PDF and VCE of Cisco, Microsoft, IBM, CompTIA, Oracle and other IT Certifications. You can view Vendor list of All Certification Exams offered:

<https://www.pass4itsure.com/allproducts>

## Need Help

Please provide as much detail as possible so we can best assist you.

To update a previously submitted ticket:



 <p><b>One Year Free Update</b> Free update is available within One Year after your purchase. After One Year, you will get 50% discounts for updating. And we are proud to boast a 24/7 efficient Customer Support system via Email.</p>	 <p><b>Money Back Guarantee</b> To ensure that you are spending on quality products, we provide 100% money back guarantee for 30 days from the date of purchase.</p>	 <p><b>Security &amp; Privacy</b> We respect customer privacy. We use McAfee's security service to provide you with utmost security for your personal information &amp; peace of mind.</p>
---	---	--

Any charges made through this site will appear as Global Simulators Limited.

All trademarks are the property of their respective owners.

Copyright © pass4itsure, All Rights Reserved.