

# 100% Money Back Guarantee

**Vendor:** Cisco

**Exam Code:** 642-655

**Exam Name:** WAASFE-Wide Area Application Services for Field Engineers

**Version:** Demo

**QUESTION NO: 1**

A WAE device recently registered against a Central Manager. What must you do before the WAE can receive a policy and interact with other WAE devices?

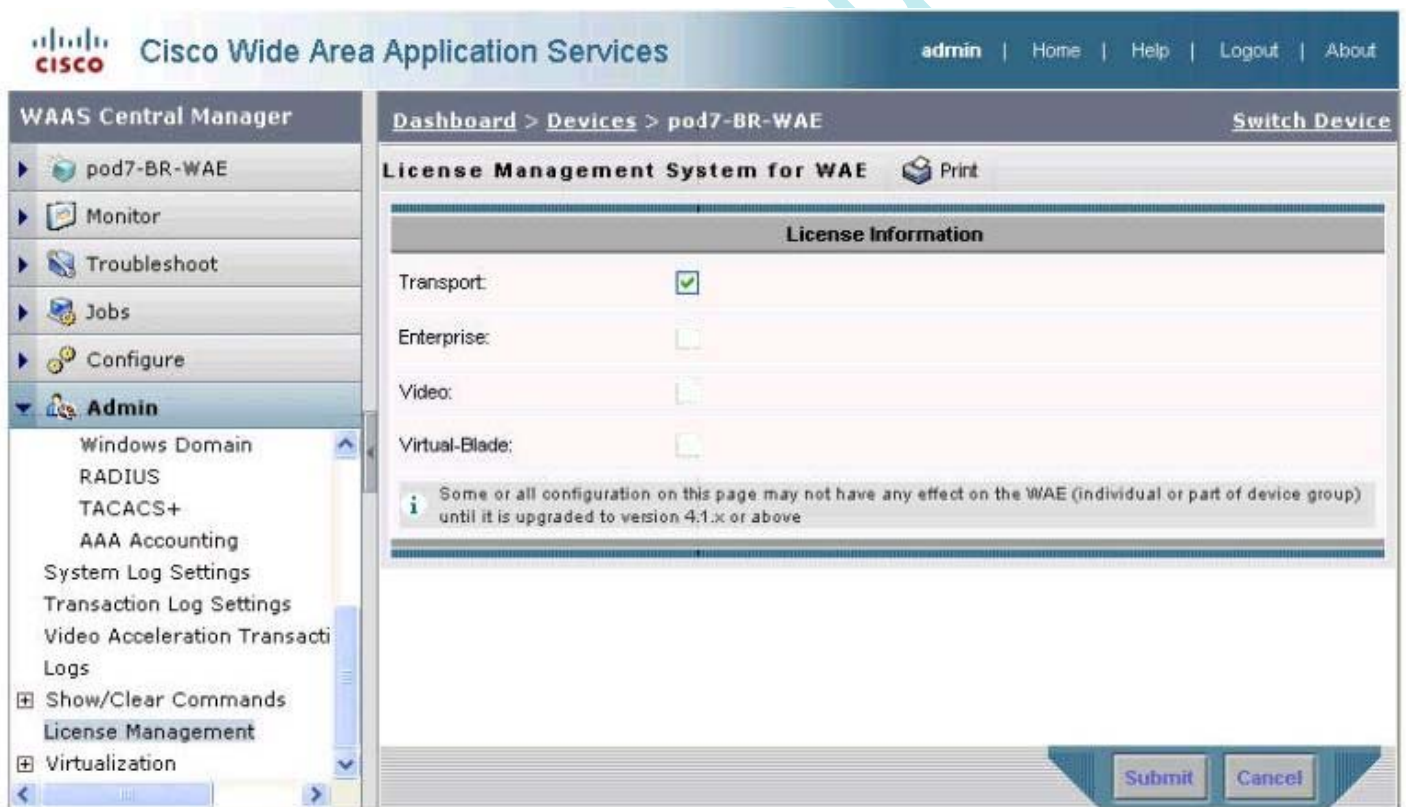
- A. Specify a primary interface
- B. Assign an IP address
- C. Activate the device
- D. Specify the device group

**Answer: C**

**Explanation:**

**QUESTION NO: 2**

Exhibit:



You work as a network engineer at Your company. You study the exhibit carefully.

When troubleshooting video licensing on a WAE, this Central Manger output is seen. What two steps must be completed to enable the video license? (Choose two.)

- A. Restart the WAE
- B. Select the Enterprise Check Box
- C. Select the Video Check Box
- D. Select the Virtual-Blade Check Box

**Answer: B,C**

**Explanation:**

**QUESTION NO: 3**

Which command verifies that a WAE in-line card is intercepting traffic from the correct VLANs?

- A. show wccp services
- B. show wccp vlans inline
- C. show int inlinegroup x/y
- D. show ip access-lists

**Answer: C**

**Explanation:**

**QUESTION NO: 4**

In what two ways can you register and activate a WAE to the Central Manager? (Choose two.)

- A. WAE(Config)#cms enable do active
- B. The auto-activate icon in the Central Manager
- C. WAE(Config)#cms enable
- D. The quickstart setup procedure

**Answer: C,D**

**Explanation:**

**QUESTION NO: 5**

Which three must be configured when you configure an edge print queue? (Choose three.)

- A. WAFS edge service
- B. EPM Policy
- C. Printer Name
- D. devive URI

**Answer: A,C,D**

**Explanation:**

**QUESTION NO: 6**

Exhibit:

The screenshot shows the Cisco Wide Area Application Services (WAAS) Central Manager interface. The main content area displays the configuration for 'pod7-BR-WAE'. Under the 'Enabled Features' section, the following features are listed with their status:

Feature	Status
TFO Optimization:	<input checked="" type="checkbox"/>
Data Redundancy Elimination:	<input checked="" type="checkbox"/>
Persistent Compression:	<input checked="" type="checkbox"/>
EPM Accelerator:	<input checked="" type="checkbox"/>
HTTP Accelerator:	<input type="checkbox"/>
NFS Accelerator:	<input checked="" type="checkbox"/>
MAPI Accelerator:	<input checked="" type="checkbox"/>
Video Accelerator:	<input checked="" type="checkbox"/> More Settings

You work as a network engineer at Your company. You study the exhibit carefully.

A WAE in your environment is experiencing no HTTP acceleration. What is the problem according to the output from the Central Manager?

- A. HTTP and Video Accelerators cannot be enabled at the same time
- B. The HTTP Accelerator is not enabled
- C. DRE eliminates all need for HTTP acceleration
- D. The Enterprise license is not installed

**Answer: B****Explanation:****QUESTION NO: 7**

How can you verify that the WAE has joined a Microsoft Windows domain correctly?

- A. Click the Show Authentication Status button in Central Manager
- B. Use the Windows netstat command

- C. Use the Windows nbtstat command
- D. Execute the show windows-domain command on the WAE

**Answer: A**

**Explanation:**

**QUESTION NO: 8**

What are the four Cisco-supported features within Windows Server on WAAS? (Choose four.)

- A. DNS
- B. Windows Media Streaming
- C. Windows Printing
- D. FTP services
- E. DHCP
- F. Internet Explorer
- G. Active Directory

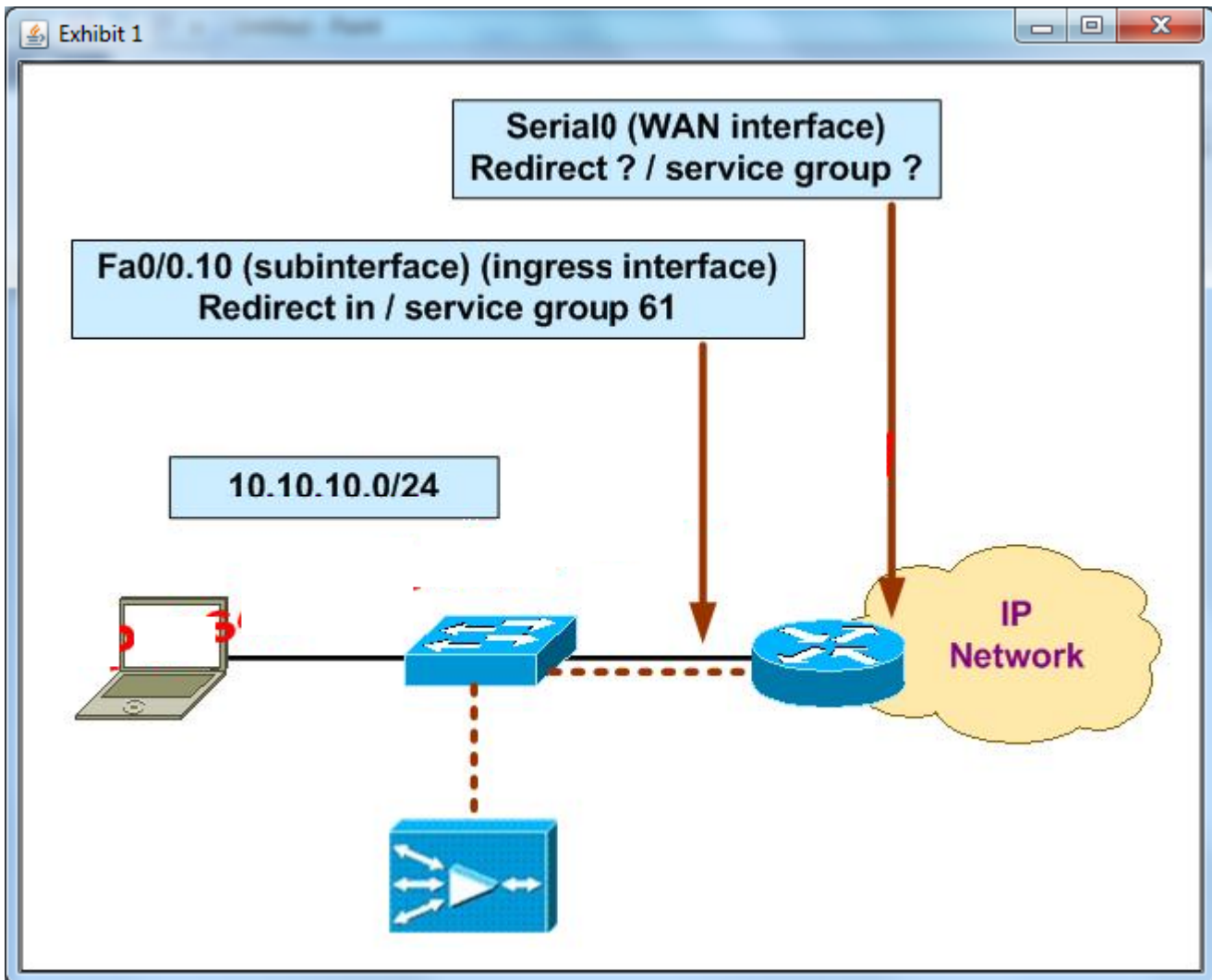
**Answer: A,C,E,G**

**Explanation:**

**QUESTION NO: 9**

Exhibit:

www.Pass4itSure.com



You work as a network engineer at Your company. You study the exhibit carefully.

The following diagram displays the Cisco WAAS configuration for your customer. Which WCCPv2 interception configuration should be applied to interface Serial0?

- A. Redirect in / service group 62
- B. Redirect out / service group 62
- C. Redirect in / service group 61
- D. Redirect out/service group 61

**Answer: A**

**Explanation:**

#### QUESTION NO: 10

How many baseline device groups can be configured for the acceleration feature set?

- A. Three
- B. One
- C. As many as needed
- D. Two



**Answer: B**

**Explanation:**

**QUESTION NO: 11**

Your customer has recently completed a large expansion of one of their regional offices. They have discovered that the WAE-512-2GB Edge WAE in that office has begun passing through some TCP connections without optimizing those connections. What two actions would solve the problem? (Choose two.)

- A. Add more memory to the WAE
- B. Add another WAE-512 edge WAE
- C. Upgrade to a WAE-612 or WAE-7326
- D. Bundle the WAE interfaces into a PortChannel

**Answer: B,C**

**Explanation:**

**QUESTION NO: 12**

What important troubleshooting information can be gathered for the Video Accelerator from the WAE#show stat accelerator video?

- A. Whether or not the WAE(Config)#accelerator video enable command has been issued
- B. Troubleshooting of the Video Accelerator can only be done through the Central Manager GUI
- C. The total Non-Windows Media and Non-Live Video Streams
- D. The license status of the Video Accelerator

**Answer: C**

**Explanation:**

**QUESTION NO: 13**

How to monitor optimization statistics for a given application across multiple WAE devices?

- A. Create a separate application traffic policy for each application
- B. Create a location group for all WAE devices on which that application is optimized
- C. Ensure that each application resides on a different subnet

D. Create a device group for all WAE devices on which that application is optimized

**Answer: D**

**Explanation:**

#### QUESTION NO: 14

Exhibit:

Device Name	Services	IP Address	CMS Status	Device Status
CM1	CM (Primary)	10.10.10.10	Online	<span style="color: green;">●</span> <span style="color: grey;">●</span> <span style="color: grey;">●</span> <span style="color: grey;">●</span> <span style="color: grey;">●</span>
CM2	CM (Standby)	10.10.10.11	Online	<span style="color: green;">●</span> <span style="color: grey;">●</span> <span style="color: grey;">●</span> <span style="color: grey;">●</span> <span style="color: grey;">●</span>
CORE1	Core	2.2.2.2	Offline	<span style="color: grey;">●</span> <span style="color: grey;">●</span> <span style="color: grey;">●</span> <span style="color: grey;">●</span> <span style="color: red;">●</span>
EDGE-NM	Edge	10.10.100.2	Online	<span style="color: green;">●</span> <span style="color: grey;">●</span> <span style="color: grey;">●</span> <span style="color: grey;">●</span> <span style="color: grey;">●</span>
EDGE1	Edge	1.1.1.2	Online	<span style="color: green;">●</span> <span style="color: grey;">●</span> <span style="color: grey;">●</span> <span style="color: grey;">●</span> <span style="color: grey;">●</span>

What are two possible reasons the CORE1 WAE might be displayed as "Offline"? (Choose two.)

- A. The Central Manager service is disabled
- B. The WAE is powered off
- C. The WAE is configured in the same VLAN as the server nodes
- D. The HTTPS service is disabled

**Answer: A,B**

**Explanation:**

#### QUESTION NO: 15

Your customer has configured each Cisco WAE to belong to multiple device groups for monitoring purposes. However the customer wants to ensure that the policies are applied to the device from one specific device group. What should you do?

- A. You must remove the WAE from all other device groups
- B. You should rejoin the WAE to the desired device group
- C. You should configure an explicit policy device group



D. You should configure the other device groups as monitoring-only

**Answer: C**

**Explanation:**

**QUESTION NO: 16**

In a WAAS Application Traffic Policy, what are three valid match conditions for traffic classifiers? (Choose three.)

- A. Subnet
- B. TCP Port
- C. IP Address
- D. Routing

**Answer: A,B,C**

**Explanation:**

**QUESTION NO: 17**

What are two ways firewalls can cause WAAS performance issues? (Choose two.)

- A. Firewalls slow the traffic going through the WAAS devices
- B. Firewalls see that the TCP sequence number has shifted and drop the connection
- C. Auto discovery uses the firewall scrub of the TCP options
- D. Only TFO will work through firewalls

**Answer: B,C**

**Explanation:**

**QUESTION NO: 18**

Which three parameters are valid for a device group? (Choose three.)

- A. Authentication provider
- B. Interception configuration
- C. Accelerate configuration
- D. Installed software version

**Answer: B,C,D**

**Explanation:**

**QUESTION NO: 19**

**Exhibit:**

The screenshot shows the Cisco Wide Area Application Services (WAAS) Central Manager interface. The main content area displays a 'Connections Summary Table For Device: pod7-BR-WAE'. The table has the following columns: Source IP:Port, Dest IP:Port, Peer Id, Applied Policy, Open Duration, Org Bytes, Opt Bytes, % Comp, and Classifier Name. The data rows show various source and destination IP addresses and ports, but the 'Opt Bytes' column is consistently empty (0), suggesting that the traffic is not being optimized. The 'Applied Policy' column shows 'None' for all entries.

Source IP:Port	Dest IP:Port	Peer Id	Applied Policy	Open Duration	Org Bytes	Opt Bytes	% Comp	Classifier Name
10.10.70.10:4184	10.10.100.247:8443	-	None	-	-	-	-	Create f
10.10.100.247:8443	10.10.70.10:4193	-	None	-	-	-	-	Create f
10.10.100.247:8443	10.10.70.10:4182	-	None	-	-	-	-	Create f
10.10.70.10:4190	10.10.100.247:8443	-	None	-	-	-	-	Create f
10.10.70.10:4191	10.10.100.247:8443	-	None	-	-	-	-	Create f
10.10.70.10:4187	10.10.100.247:8443	-	None	-	-	-	-	Create f
10.10.100.247:8443	10.10.70.10:4187	-	None	-	-	-	-	Create f
10.10.70.10:4186	10.10.100.247:8443	-	None	-	-	-	-	Create f
10.10.70.10:4193	10.10.100.247:8443	-	None	-	-	-	-	Create f

You work as a network engineer at Your company. You study the exhibit carefully.

Based on this Central Manger Connection Statistics screen, what is the primary issue with port 8443 traffic not being optimized?

- A. There is no acceleration policy matching the traffic
- B. The pod7-BR-WAE is overloaded
- C. the proper classifier is not being applied
- D. The connections are not staying open

**Answer: A**

**Explanation:**

**QUESTION NO: 20**

Which associates classified traffic to an application definition and assigns an action?

- A. Baseline Policies
- B. Traffic classifiers

- C. Policy Maps
- D. Application definitions

**Answer: C**

**Explanation:**

**QUESTION NO: 21**

The command show wccp services displays what?

- A. The WCCP service groups that are configured on the WAE
- B. The routers that are registered with the WCCP service of the WAE
- C. The WCCP service groups that are configured on the router
- D. The WAE appliances that are registered with the router WCCP service

**Answer: A**

**Explanation:**

**QUESTION NO: 22**

After configuring a Cisco WAAS deployment using WCCPv2, you find that you can successfully ping a data center sever from a workstation in the branch office however, when you attempt to start one of the optimized applications, the application cannot communicate with the server. What is the most likely cause?

- A. You configured autonegotiate duplex mode on the WAE interfaces
- B. There is insufficient disk space on either the edge or core WAE
- C. You deployed the WAE on the same subnet as the users or servers
- D. You configured half-duplex mode on the WAE interfaces

**Answer: C**

**Explanation:**

**QUESTION NO: 23**

How do you access the WAE Central Manager GUI?

- A. [https://IP\\_Addr\\_WAE:8080](https://IP_Addr_WAE:8080)

- B. http://IP\_of\_WAE
- C. https://IP\_Addr\_of\_WAE:8443
- D. https://IP\_Add\_WAE :443

**Answer: C**

**Explanation:**

#### QUESTION NO: 24

How is the client software obtained for WAAS mobile?

- A. By creating a client distribution in the WAAS Mobile Manager
- B. By using the existing Windows WAAS mobile for installation
- C. By using the existing Windows VPN client for installation
- D. By downloading the client installation from Cisco

**Answer: A**

**Explanation:**

#### QUESTION NO: 25

When configuring adapter policies in a Cisco WAAS environment, what is the purpose of the EPM adapter?

- A. To identify the dynamically assigned port number of a connection
- B. To specify the traffic that is associated with an optimization
- C. To provide grouping for statistics and monitoring
- D. To differentiate priority on a congested link

**Answer: A**

**Explanation:**

#### QUESTION NO: 26

Your customer is using firewalls. What must be permitted to pass through firewalls in order to allow WAE autodiscovery?

- A. TCP options

- B. TCP SYN-ACK with data
- C. TCP port 139
- D. TCP port 445

**Answer: A**

**Explanation:**

**QUESTION NO: 27**

With Cisco WAAS, which two WCCPv2 service groups are used to make up the TCP Promiscuous service group? (Choose two.)

- A. 61
- B. 60
- C. 62
- D. 89

**Answer: A,C**

**Explanation:**

**QUESTION NO: 28**

Which two symptoms would you expect to observe in a TCP trace if a Cisco WAE that was optimizing connections fails? (Choose two.)

- A. The receiving node receives TCP segments with invalid sequence numbers and resets the connection
- B. The secondary WAE takes over the connection and the receiving node sees nothing
- C. All optimized TCP connections handled by that WAE are reset
- D. All optimized TCP connections are taken over by the receiving node

**Answer: A,C**

**Explanation:**

**QUESTION NO: 29**

Which WAE deployment model must you use to configure PortChannels on the core WAE appliances to enable load balancing across WAE interfaces?

- A. one-router, one-arm
- B. on-router, two-arm
- C. off-router, one-arm
- D. off-router, two-arm

**Answer: C**

**Explanation:**

**QUESTION NO: 30**

What WAAS mobile tool would you use to verify that data is moving between the client and the WAAS mobile server?

- A. The Server Sessions Traffic screen
- B. The Active Server Traffic screen
- C. The Active Sessions Traffic screen
- D. The main WAAS Mobile Client Manager screen

**Answer: C**

**Explanation:**

**QUESTION NO: 31**

In a Cisco WAAS environment, what is the role of Application Traffic Policies?

- A. To associate a flow with a WAN connection and associate the WAN connection with an application accelerator
- B. To associate a flow with a WAE and associate the optimized flow with a device group
- C. To associate a flow with an optimization and associate the optimized flow with an application definition
- D. To associate a flow with a Central Manager and associate the optimized flow with an application definition

**Answer: C**

**Explanation:**

**QUESTION NO: 32**

What is the function of Application Traffic Policies in a Cisco WAAS environment?



- A. To associate a flow with a WAE and associate the optimized flow with a device group
- B. To associate a flow with a Central Manager and associate the optimized flow with an application definition
- C. To associate a flow with a WAN connection and associate the WAN connection with an application accelerator
- D. To associate a flow with an optimization and associate the optimized flow with an application definition

**Answer: D**

**Explanation:**

### QUESTION NO: 33

After configuring a Cisco WAAS deployment using WCCPv2, you find that you can successfully ping a data center sever from a workstation in the branch office however, when you attempt to start one of the optimized applications, the application cannot communicate with the server. What is the most likely cause?

- A. You configured half-duplex mode on the WAE interfaces
- B. You configured autonegotiate duplex mode on the WAE interfaces
- C. You deployed the WAE on the same subnet as the users or servers
- D. There is insufficient disk space on either the edge or core WAE

**Answer: C**

**Explanation:**

### QUESTION NO: 34

How to monitor optimization statistics for a given application across multiple WAE devices?

- A. Create a separate application traffic policy for each application
- B. Create a device group for all WAE devices on which that application is optimized
- C. Ensure that each application resides on a different subnet
- D. Create a location group for all WAE devices on which that application is optimized

**Answer: B**

**Explanation:**

To Read the [Whole Q&As](#), please purchase the [Complete Version](#) from [Our website](#).

# Trying our product !

- ★ **100%** Guaranteed Success
- ★ **100%** Money Back Guarantee
- ★ **365 Days** Free Update
- ★ **Instant Download** After Purchase
- ★ **24x7** Customer Support
- ★ Average **99.9%** Success Rate
- ★ More than **69,000** Satisfied Customers Worldwide
- ★ Multi-Platform capabilities - **Windows, Mac, Android, iPhone, iPod, iPad, Kindle**

## Need Help

Please provide as much detail as possible so we can best assist you.

To update a previously submitted ticket:



 <b>One Year Free Update</b> Free update is available within One Year after your purchase. After One Year, you will get 50% discounts for updating. And we are proud to boast a 24/7 efficient Customer Support system via Email.	 <b>Money Back Guarantee</b> To ensure that you are spending on quality products, we provide 100% money back guarantee for 30 days from the date of purchase.	 <b>Security &amp; Privacy</b> We respect customer privacy. We use McAfee's security service to provide you with utmost security for your personal information & peace of mind.
-------------------------------------------------------------------------------------------------------------------------------------------------------------------------------------------------------------------------------------------------------------------------------------------------------------------------	-----------------------------------------------------------------------------------------------------------------------------------------------------------------------------------------------------------------------------------------------------	------------------------------------------------------------------------------------------------------------------------------------------------------------------------------------------------------------------------------------------------------------------------

## Guarantee & Policy | Privacy & Policy | Terms & Conditions

Any charges made through this site will appear as Global Simulators Limited.

All trademarks are the property of their respective owners.