

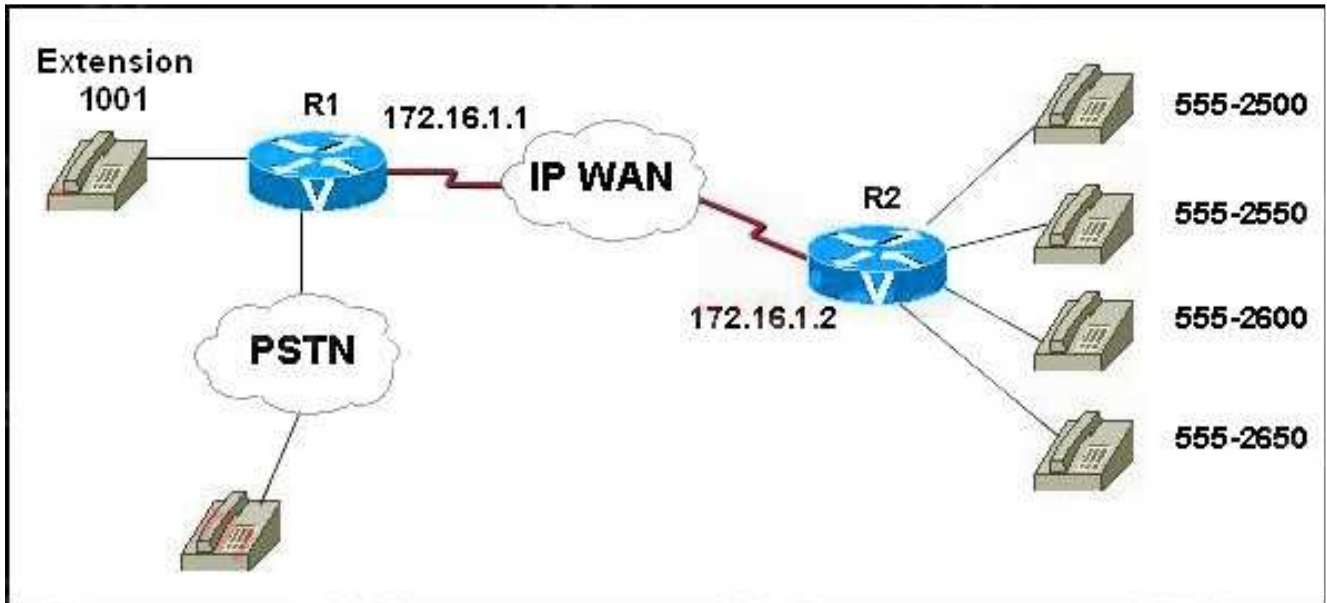
Exam : **642-436**

Title : Cisco Voice over IP
(CVOICE)

Version : Demo

www.Pass4itSure.com

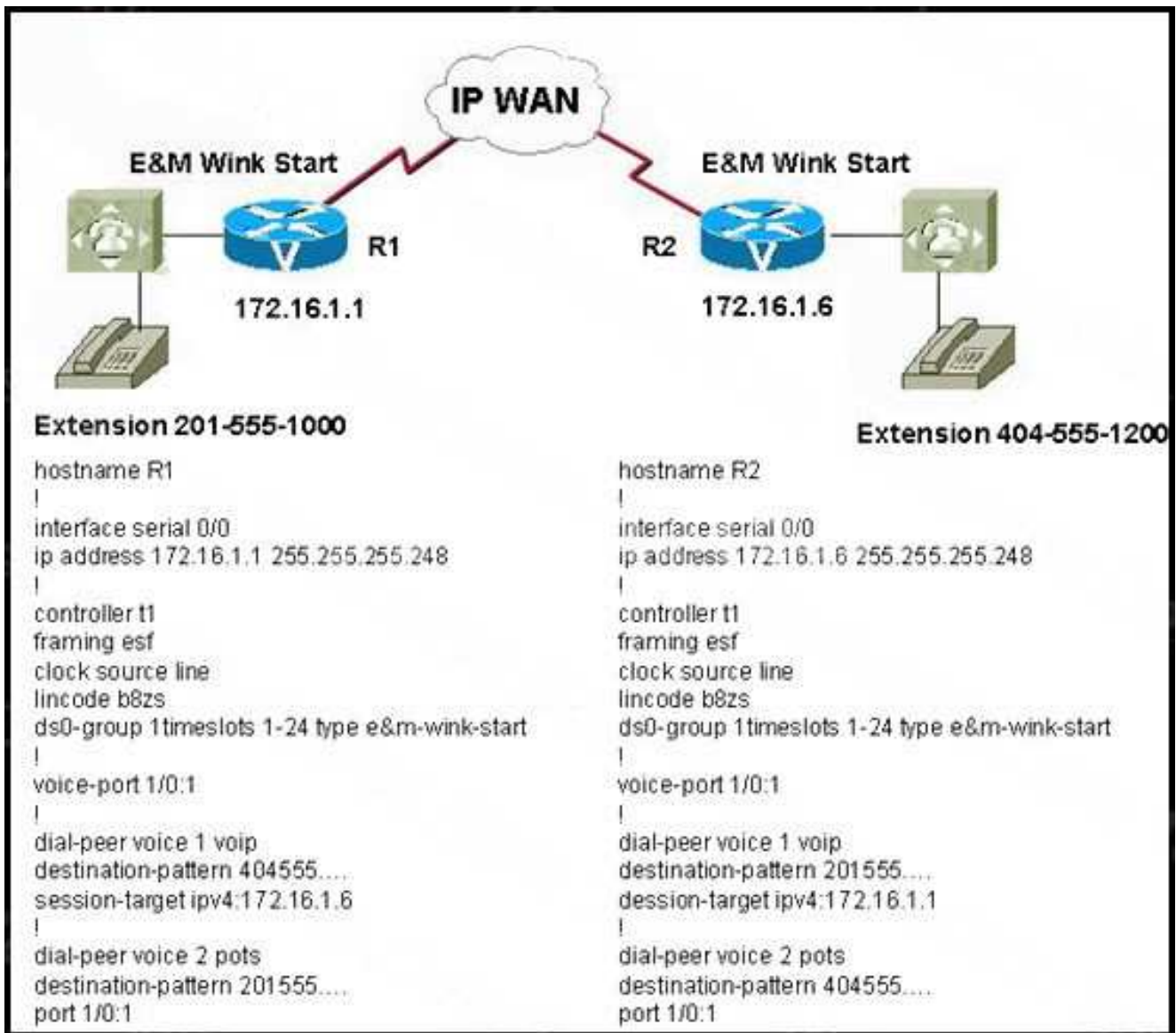
1. Refer to the exhibit. You have been asked to configure a dial peer on R2 that will match only the extensions of the four telephones attached. Which dial-peer statement will you use?



- A. dial-peer voice 1 pots
destination-pattern 5552.[0-5]0
- B. dial-peer voice 1 pots
destination pattern 5552[5-6].0
- C. dial-peer voice 1 pots
destination-pattern 555[2-5][56]
- D. dial-peer voice 1 pots
destination-pattern 5552[5-6][05]0

Answer: D

2. Refer to the exhibit. When extension 201-555-1000 dials 404-555-1200, how are the digits manipulated in R1 so that they are presented correctly at R2?



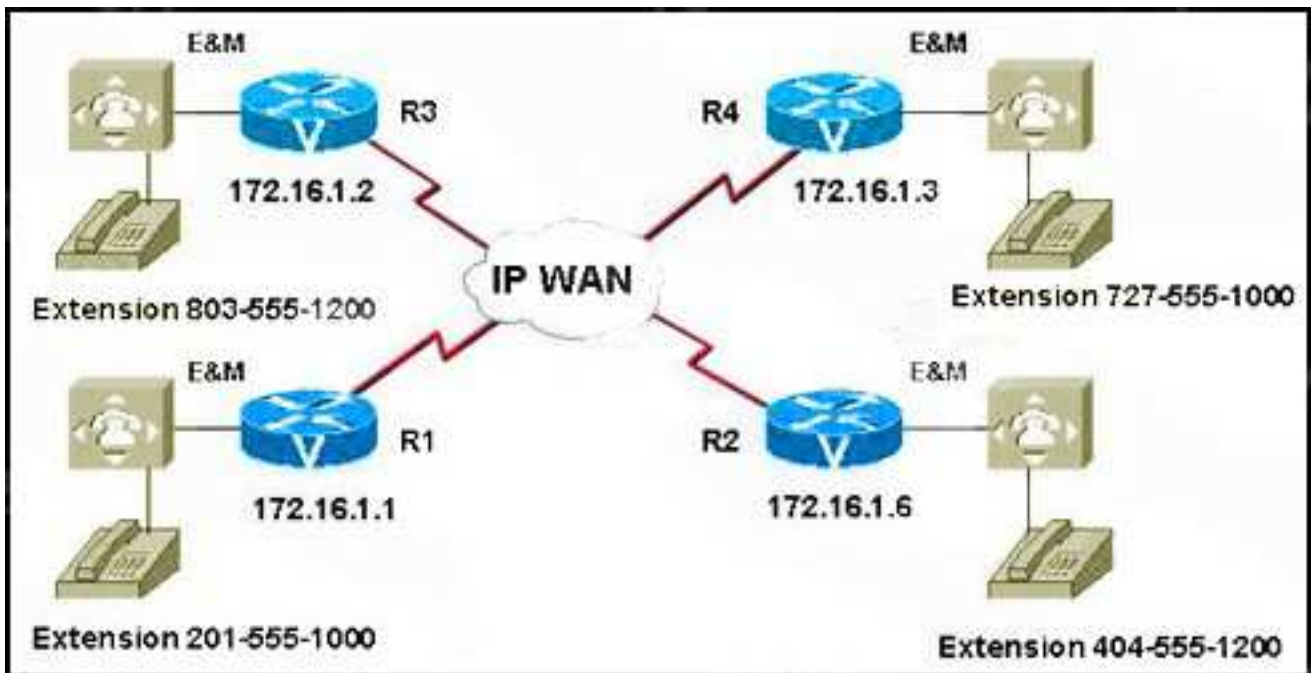
- A. The outbound VoIP dial peer is matched and all digits are sent.
- B. The digits 404-555 are stripped off before matching the outbound POTS dial peer.
- C. The digits 404-555 are stripped off by the connection trunk and R2 receives only 1200.
- D. R1 collects the 1200 and prepends the tie-line digits 404555. That number is matched to a VoIP dial peer and sent to the appropriate address.

Answer: A

3. Refer to the exhibit. Your customer wants to converge the existing PBX network with the IP network. The three remote offices have various types of PBXs. The customer is using a combination of tie-lines and trunks to connect the PBXs today.

Which kind of connection should be implemented to allow calls to be placed from 201-555-1000 to

727-555-1000 so that when the call is completed, network resources are returned for other uses?



- A. PLAR
- B. trunk C.
tie-line
- D. answer-mode

Answer: C

4. Which dial plan characteristic shows the most obvious improvement by dropping a number translation step?

- A. availability
- B. post-dial delay
- C. scalability
- D. hierarchical design

Answer: B

5. Which option is true concerning the MGCP call agent?

- A. acts only as a recorder of call details
- B. provides only call signaling and call setup

- C. manages all aspects of the call and voice stream
- D. monitors the quality of each call after setup

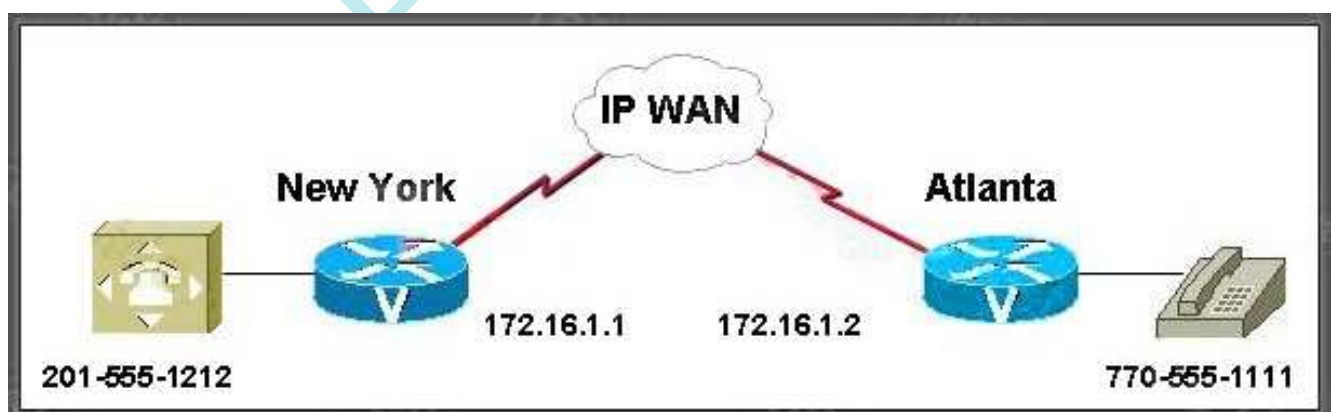
Answer: B

6. At what point does the MGCP call agent release the setup of the call path to the residential gateways?
- A. after the call agent has been notified that an event occurred at the source residential gateway
 - B. after the call agent has been notified of an event and has instructed the source residential gateway to create a connection
 - C. does not release call path setup
 - D. after the call agent has sent a connection request to both the source and destination and has relayed a modify-connection request to the source so that the source and destination can set up the call path
 - E. after the call agent has forwarded session description protocol information to the destination from the source and has sent a modify connection to the destination and a create-connection request to the source

Answer: D

7. Refer to the exhibit for IP addresses and telephone numbers. You are working with a customer opening a small sales office in Atlanta. You want the user in Atlanta to be able to dial into the PBX in New York over the IP WAN. The New York PBX uses ground start, a two-wire operation, and DTMF dialing.

Choose the correct FXO port configuration commands for New York.



- A. voice-port 1/0/0
signal ground-start
operation 2-wire
dial-type dtmf

B. voice-port 1/1/1

destination 2015551212

signal ground-start

operation 2-wire

type 1

dial-type dtmf

C. voice port 1/0/0

session target ipv4:172.16.1.1

destination 2015551212

signal ground-start

operation 2-wire

dial-type dtmf

D. voice port 1/0/0

session target ipv4:172.16.1.1

source 2015551212

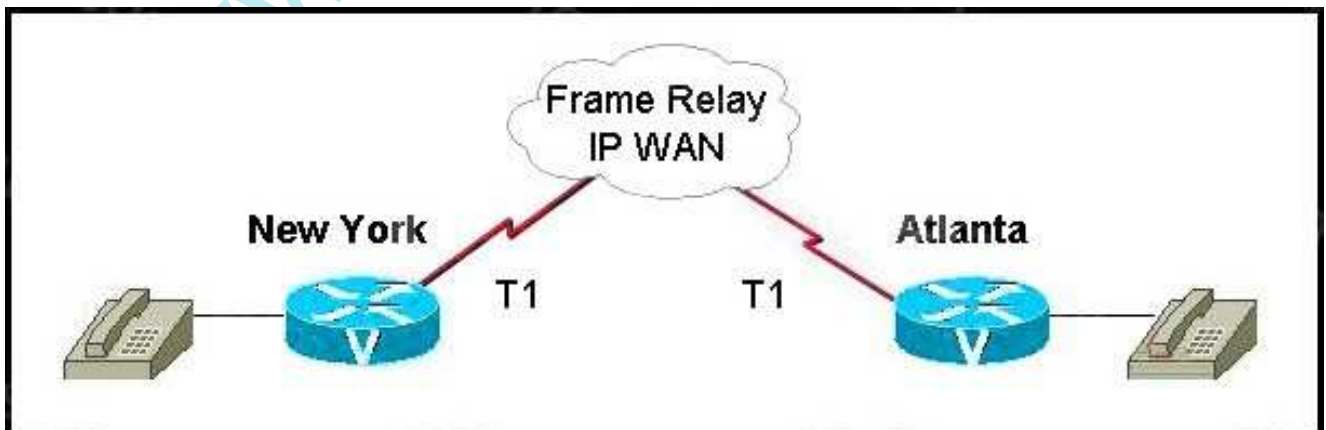
signal wink-start

operation 2-wire

dial-type dtmf

Answer: A

8. Refer to the exhibit.



Lighthorse Equine Management would like to investigate converging voice and data on their existing T1

Frame Relay WAN link between New York and Atlanta. Currently the following list of applications are consuming no more bandwidth than what is listed on this segment of the network.

T1 link 1536 kbps

e-mail 75 kbps

internet 200 kbps

Oracle 500 kbps

FTP 250 kbps

Total 1025 kbps

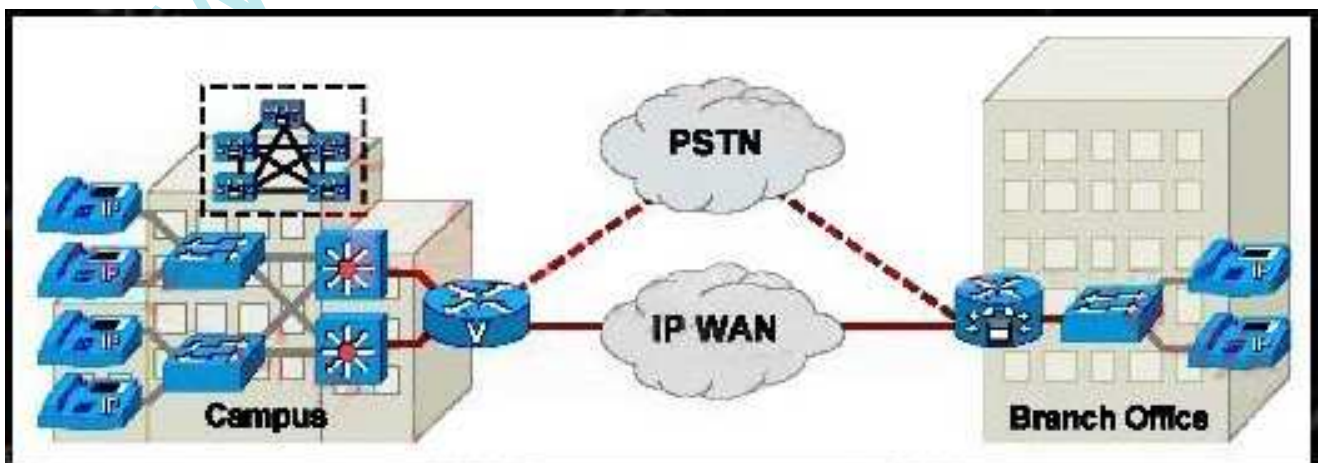
The customer has allocated 25% of the WAN link for routing updates and other overhead. They would like to increase the number of samples encapsulated in each PDU to 40 ms. You have calculated 6 bytes of overhead for Frame Relay, no cRTP, and the use of the G.711 codec.

How many simultaneous calls could be placed on this link?

- A. 0 calls
- B. 1 call
- C. 2 calls
- D. no more than 5 calls
- E. no more than 10 calls
- F. no more than 20 calls

Answer: B

9. Refer to the exhibit. A QoS strategy has already been deployed on the LAN. Choose three WAN QoS best practices that should be used over the WAN link. (Choose three.)



- A. Implement NBAR.
 - B. Implement admission control.
 - C. Mark voice traffic as EF in DSCP.
 - D. Mark voice traffic highest priority in 802.1p. E.
- Use cRTP to maximize bandwidth utilization.
- F. Configure access switches to trust traffic from IP phones.

Answer: BCE

10. When setting up a VoIP call, what is the first thing a gateway router tries to match to a dialed number?
- A. call leg
 - B. IP route
 - C. session target
 - D. destination pattern

Answer: D

www.Pass4itSure.com

Trying our product !

- ★ **100%** Guaranteed Success
- ★ **100%** Money Back Guarantee
- ★ **365 Days** Free Update
- ★ **Instant Download** After Purchase
- ★ **24x7** Customer Support
- ★ Average **99.9%** Success Rate
- ★ More than **69,000** Satisfied Customers Worldwide
- ★ Multi-Platform capabilities - **Windows, Mac, Android, iPhone, iPod, iPad, Kindle**

Need Help

Please provide as much detail as possible so we can best assist you.

To update a previously submitted ticket:



Submit A Ticket

One Year Free Update



Free update is available within One Year after your purchase. After One Year, you will get 50% discounts for updating. And we are proud to boast a 24/7 efficient Customer Support system via Email.



Money Back Guarantee

To ensure that you are spending on quality products, we provide 100% money back guarantee for 30 days from the date of purchase.



Security & Privacy

We respect customer privacy. We use McAfee's security service to provide you with utmost security for your personal information & peace of mind.

Guarantee & Policy | Privacy & Policy | Terms & Conditions

Any charges made through this site will appear as Global Simulators Limited.

All trademarks are the property of their respective owners.

Copyright © 2004-2014, All Rights Reserved.