



600-660^{Q&As}

Implementing Cisco Application Centric Infrastructure - Advanced

Pass Cisco 600-660 Exam with 100% Guarantee

Free Download Real Questions & Answers **PDF** and **VCE** file from:

<https://www.pass4itsure.com/600-660.html>

100% Passing Guarantee
100% Money Back Assurance

Following Questions and Answers are all new published by Cisco
Official Exam Center

-  **Instant Download** After Purchase
-  **100% Money Back** Guarantee
-  **365 Days** Free Update
-  **800,000+** Satisfied Customers





QUESTION 1

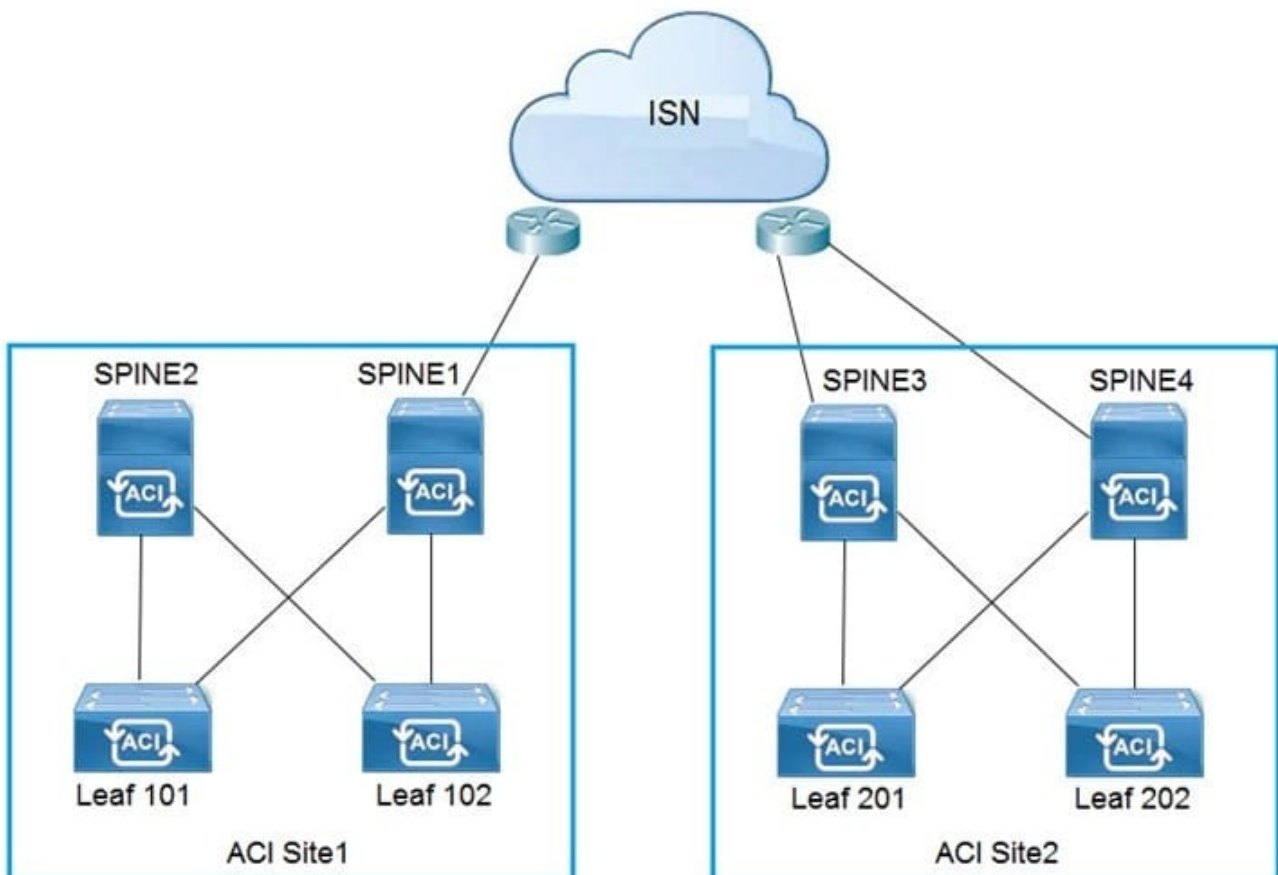
Which two components must be configured as stretched to establish intra-VRF communication between two EPGs that are deployed in different sites and different bridge domains? (Choose two.)

- A. contract
- B. tenant
- C. application profile
- D. bridge domain
- E. EPG

Correct Answer: DE

Reference: <https://www.cisco.com/c/en/us/solutions/collateral/data-center-virtualization/application-centric-infrastructure/white-paper-c11-739609.html>

QUESTION 2



Refer to the exhibit. Which two configuration steps are required in ISN for Cisco ACI Multi-Site setup? (Choose two.)



- A. Connect Spine2 to ISN routers.
- B. Configure BIDIR-PIM throughout the ISN
- C. Increase ISN MTU to support the maximum MTU that is sent by endpoints
- D. Configure OSPF between spines and ISN routers
- E. Enable IGMPv3 on ISN routers

Correct Answer: DE

QUESTION 3

What does the VXLAN source port add to the overlay packet forwarding when it uses the hash of Layer 2, Layer 3, and Layer 4 headers of the inner packet?

- A. ECMP
- B. TCP optimization
- C. disabled fragmentation
- D. jumbo frames

Correct Answer: A

Reference: <https://www.cisco.com/c/en/us/support/docs/lan-switching/vlan/212682-virtual-extensible-lan-and-ethernet-virt.html>

QUESTION 4

An engineer must limit local and remote endpoint learning to the bridge domain subnet. Which action should be taken inside the Cisco APIC?

- A. Disable Remote EP Learn
- B. Enable Enforce Subnet Check
- C. Disable Endpoint Dataplane Learning
- D. Enable Limit IP Learning to Subnet

Correct Answer: B

Reference: <https://www.cisco.com/c/en/us/solutions/collateral/data-center-virtualization/application-centric-infrastructure/white-paper-c11-739989.html>

QUESTION 5

What is a design implication for Cisco ACI using an application-centric approach?



- A. Multiple VLANs and/or multiple EPGs are under one bridge domain
- B. VLAN numbers are in the names of the bridge domain and EPG objects
- C. One EPG is mapped to multiple bridge domains
- D. One VLAN equals one EPG equals one bridge domain

Correct Answer: C

QUESTION 6

DRAG DROP

Drag and drop the tenant implementation designs from the left onto the outcomes of the design when a greenfield Cisco ACI fabric is deployed on the right.

Select and Place:

Answer Area

VRF configured in common tenant; BDs and EPGs configured in dedicated tenants.	One organization without RBAC requirements owns all of the configuration.
VRF and BDs configured in common tenant; EPGs configured in user tenants.	Different organizations can have overlapping subnets.
VRF, BD, and EPG configured in common tenant.	Organizations use different tenants and share the same subnets.
VRF, BD, and EPG configured in user tenants.	Each organization has access only to dedicated resources, tied into RBAC rules.

Correct Answer:



Answer Area

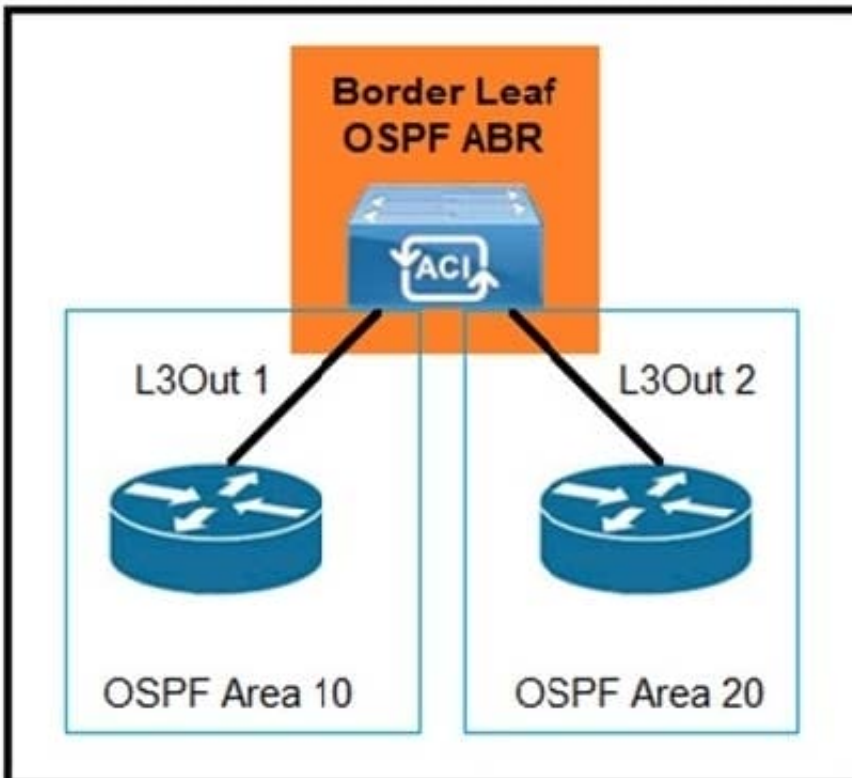
VRF, BD, and EPG configured in user tenants.

VRF, BD, and EPG configured in common tenant.

VRF configured in common tenant; BDs and EPGs configured in dedicated tenants.

VRF and BDs configured in common tenant; EPGs configured in user tenants.

QUESTION 7



Refer to the exhibit. Which configuration must be implemented to allow intra-VRF transit routing between the two external routers?

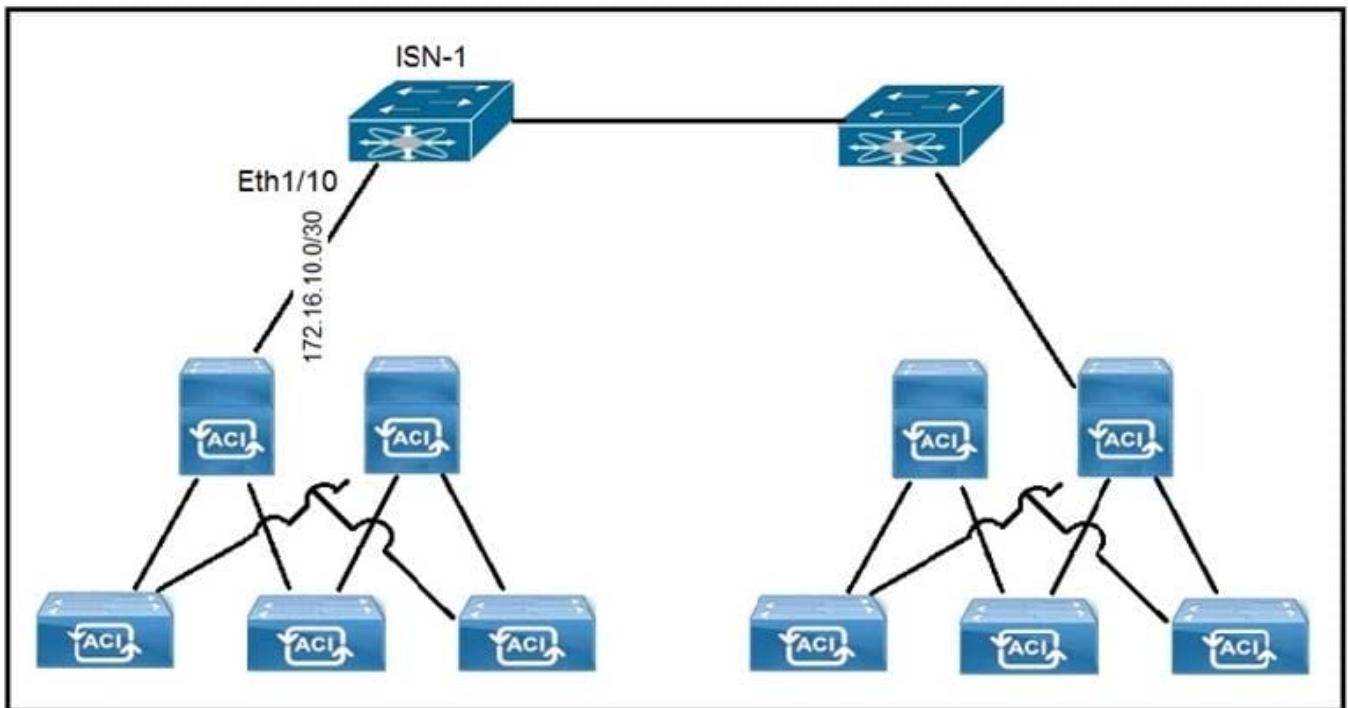
- A. Deploy both areas under the same L3Out policy



- B. Change one of the areas to area 0
- C. Configure OSPF virtual links
- D. Modify L3Out 1 to use the same OSPF area as L3Out 2

Correct Answer: A

QUESTION 8

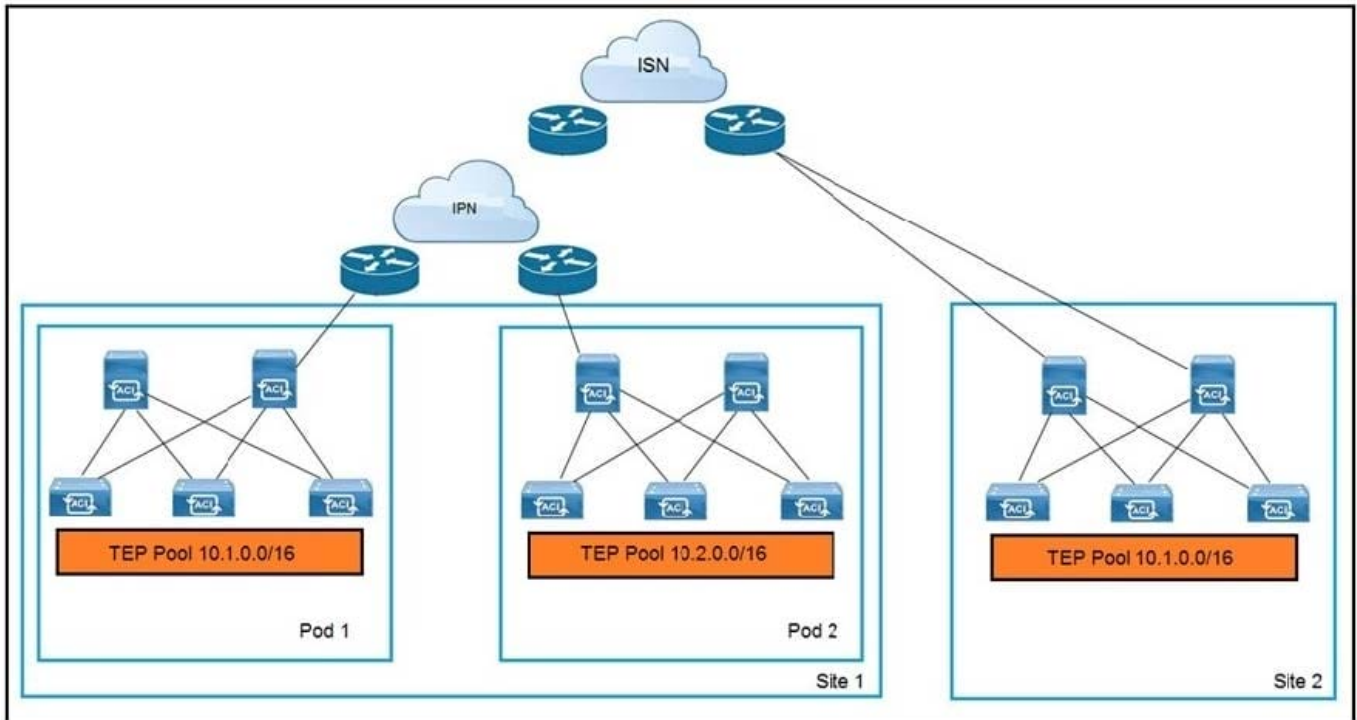


Refer to the exhibit. A customer implements Cisco ACI Multi-Site with default MTU settings between two sites. Which configuration should be applied on the interface Eth1/10 on the ISN-1 device?

- A.
- B.
- C.
- D.

Correct Answer: A

QUESTION 9



Refer to the exhibit. An engineer extends a Cisco ACI Multi-Pod setup to a Cisco ACI Multi-Site implementation. Which action allows the interconnection?

- A. Configure BIDIR-PIM in the IPN and ISN
- B. Use dedicated uplinks on Site 1 spines for ISN connections
- C. Connect all spines to the IPN and ISN
- D. Filter the advertisement of the Site 2 TEP pool into the IPN

Correct Answer: A

QUESTION 10

What are two characteristics of Cisco ACI and Spanning Tree Protocol interaction? (Choose two.)

- A. When a TCN BPDU is received in a VLAN, Cisco ACI flushes the endpoints for the associated encapsulation.
- B. STP BPDUs are dropped due to MCP.
- C. MST BPDUs are flooded correctly in Cisco ACI fabric without additional configuration.
- D. BPDU filter and BPDU guard can be configured on Cisco ACI leaf edge ports.
- E. Cisco ACI must be configured as the STP root for all VLANs.

Correct Answer: DE

Reference: https://www.cisco.com/c/en/us/td/docs/switches/datacenter/aci/aci_virtual_edge/configuration/1-x/b_Virtual_Edge_Config_Guide_1_2_2/b_Virtual_Edge_Config_Guide_1_2_2_chapter_0101.html



VCE & PDF

Pass4itSure.com

<https://www.pass4itsure.com/600-660.html>

2024 Latest pass4itsure 600-660 PDF and VCE dumps Download

[Latest 600-660 Dumps](#)

[600-660 PDF Dumps](#)

[600-660 Practice Test](#)