

Exam : 510-802

Title : Sybase PowerDesigner
Data Modeling Pro.
Exam(version 12.1)

Version : DEMO

www.Pass4itSure.com

1. Which of the following is FALSE about PowerDesigner's reporting feature?

A. The Report Editor and the Multi-Model Report Editor have their own windows but share the same graphical interface.

B. You cannot open the Report Template Editor with no model attached to it. C.

PowerDesigner contains a series of predefined structures called templates.

D. The Report Language Editor is an independent module.

Answer: B

2. PowerDesigner uses _____ to create Report templates.

A. Word

B. Model Editor

C. Wordpad

D. Report Template Editor

E. Notepad

Answer: D

3. To choose the columns displayed in a report list item, right-click the list item in the Report Editor and choose the _____ menu entry.

A. Layout

B. Format

C. Selection

D. Edit Title ?Edit Title

Answer: A

4. A model has Diagram_1, Diagram_2, Diagram_3. A report contains only the diagram\graphic node. How do I generate a report with diagrams in the order Diagram_2, Diagram_3 and Diagram_1?

A. Report -> Select Objects

B. Right-click Graphics -> Selection

C. Right-click Diagram -> Selection and make your selection Define Sort and Filter Window

D. Right-click Diagram ->? Selection and make your selection from the Select Objects Window

Answer: C

5. What does "Format" on the Graphics item of the Report Editor allow you to control? (Choose 2)

A. The scale of the diagram image output to the report

B. The type of image output to the report only

C. The font and paragraph placement of the image and caption output to the report

D. The display of the frame around the diagram image output to the report

Answer: AD

6. PowerDesigner reports support which generation formats?

A. Plain Text

B. HTML

C. RTF D.

XML

E. Tab Delimited Values

F. CSV Answer:

BCDF

7. Check model errors are displayed in which windows? (Choose 2)

A. Result List

B. Output C.

Diagram D.

Browser

E. Merge Models

F. Check Model Parameters

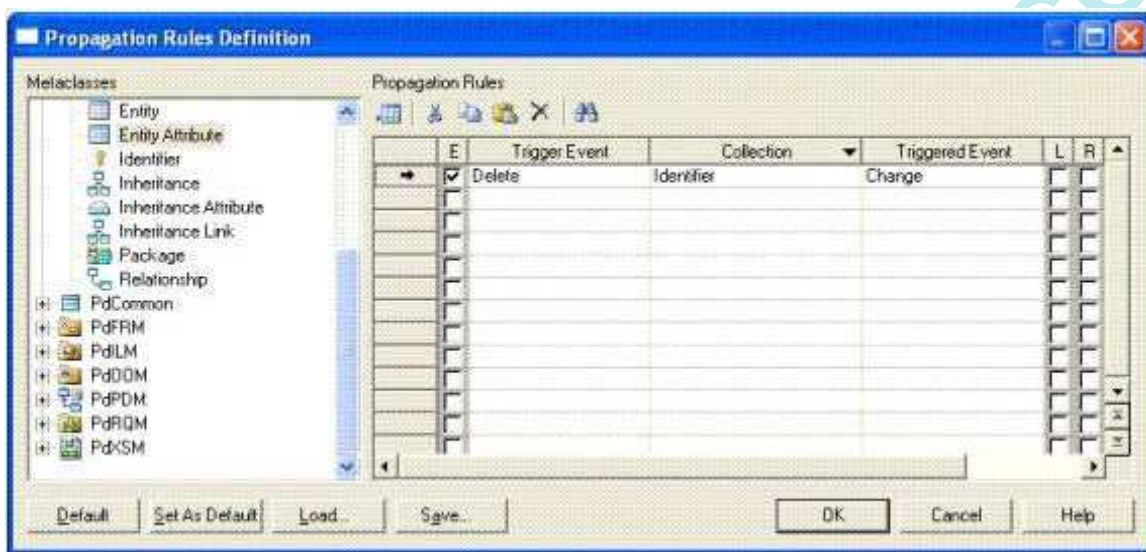
Answer: AB

8. Which of the following objects are NOT available in a PowerDesigner CDM? (Choose 3)

A. Entity

- B. Table
 - C. Relationship
 - D. Attribute
 - E. Key
 - F. Reference
- Answer: BEF

9. How would you read the following propagation rule?



- A. When an entity attribute is changed, the collection identifier is deleted.
- B. When an entity attribute is deleted, the collection identifier is changed.
- C. When an identifier is changed, the collection entity attribute is deleted.
- D. When an identifier is changed, the collection entity attribute is changed.

Answer: B

10. Which sequence represents the hierarchy display in the Browser?

- A. Model -> Folder -> Workspace
- B. Workspace -> Folder -> Model
- C. Folder -> Workspace -> Model

D. Folder ->Model -> Workspace

Answer: B

11. In the Merge Model window, what does a red exclamation mark mean?

A. Object has been created.

B. Object has been modified.

C. Object has been moved.

D. Object has been deleted.

Answer: B

12. Customizing your favorite tabs ?

A. persist when the model is closed.

B. returns to default when the model is closed.

C. is defined on a package-per-package basis.

D. is defined on a diagram-per-diagram basis.

Answer: A

13. Which of the following can NOT be added to a Workspace?

A. Folder

B. Image file

C. Model

D. Report template

E. Workspace

Answer: E

14. On the Merging Model window, a user can?On the Merging Model window, a user can

A. use the Change Filter tool to show only deleted objects.

B. place a check in a check box to prevent the change indicated.

C. see the to model on the left side and from model on the right side.

D. right-click a specific line item to remove it from the list.

Answer: A

15. Which categories are NOT found in General Options? (Choose 2)

A. General

B. Dialog

C. Object View

D. Naming Convention

E. Repository

Answer: CD

16. Which of the following can NOT be set using a template model?

A. Model Options

B. Custom Shapes

C. Display Preferences D. General Options

Answer: D

17. Where are the naming conventions for objects set?

A. Tools -> General Options

B. Tools -> Display Preferences

C. Tools -> Resources

D. Tools -> Model Options

Answer: D

18. In the Customize Columns and Filter window, what are the available wild cards? (Choose 2)

A. %

B. *

C. _

D. ?

Answer: BD

19. What are NOT common uses of the Generation Template Language (GTL)?

- A. Creating or modifying the DDL generation for an RDBMS
- B. Defining the Trigger Template or Template Items
- C. Defining tabs and forms for Extended Attributes
- D. Creating custom naming convention scripts

Answer: C

20. Which feature allows you to customize a model by creating an association between two meta classes?

- A. Custom Form
- B. Criterion
- C. Extended Collection
- D. Extended Attribute

Answer: C

www.Pass4itSure.com

This document was created with Win2PDF available at <http://www.win2pdf.com>.
The unregistered version of Win2PDF is for evaluation or non-commercial use only.
This page will not be added after purchasing Win2PDF.

www.Pass4itSure.com

Trying our product !

- ★ **100%** Guaranteed Success
- ★ **100%** Money Back Guarantee
- ★ **365 Days** Free Update
- ★ **Instant Download** After Purchase
- ★ **24x7** Customer Support
- ★ Average **99.9%** Success Rate
- ★ More than **69,000** Satisfied Customers Worldwide
- ★ Multi-Platform capabilities - **Windows, Mac, Android, iPhone, iPod, iPad, Kindle**

Need Help

Please provide as much detail as possible so we can best assist you.

To update a previously submitted ticket:



Submit A Ticket

One Year Free Update



Free update is available within One Year after your purchase. After One Year, you will get 50% discounts for updating. And we are proud to boast a 24/7 efficient Customer Support system via Email.



Money Back Guarantee

To ensure that you are spending on quality products, we provide 100% money back guarantee for 30 days from the date of purchase.



Security & Privacy

We respect customer privacy. We use McAfee's security service to provide you with utmost security for your personal information & peace of mind.

Guarantee & Policy | Privacy & Policy | Terms & Conditions

Any charges made through this site will appear as Global Simulators Limited.

All trademarks are the property of their respective owners.

Copyright © 2004-2014, All Rights Reserved.