



500-220^{Q&As}

Cisco Meraki Solutions Specialist

Pass Cisco 500-220 Exam with 100% Guarantee

Free Download Real Questions & Answers **PDF** and **VCE** file from:

<https://www.pass4itsure.com/500-220.html>

100% Passing Guarantee
100% Money Back Assurance

Following Questions and Answers are all new published by Cisco
Official Exam Center

- ⚙️ **Instant Download** After Purchase
- ⚙️ **100% Money Back** Guarantee
- ⚙️ **365 Days** Free Update
- ⚙️ **800,000+** Satisfied Customers





QUESTION 1

For which two reasons can an organization become "Out of License"? (Choose two.)

- A. licenses that are in the wrong network
- B. more hardware devices than device licenses
- C. expired device license
- D. licenses that do not match the serial numbers in the organization
- E. MR licenses that do not match the MR models in the organization

Correct Answer: BC

Reference: https://documentation.meraki.com/General_Administration/Licensing/Meraki_Licensing_FAQs

QUESTION 2

Which information do the MXs in a High Availability pair share?

- A. spanning-tree state
- B. time synchronization state
- C. DHCP association database
- D. stateful firewall database

Correct Answer: C

QUESTION 3

What are two roles of the network and device tags in a Dashboard? (Choose two.)

- A. Tags enable administrators to configure a combination of network and device specific tags to create summary reports filtered for specific devices across multiple networks.
- B. Network tags can be used to assign networks to separate Auto VPN domains in an Organization with many networks.
- C. Network tags can be used to simplify the assignment of network-level permissions in an Organization with many networks.
- D. Device tags can be used to simplify the assignment of device-level permissions in an Organization with many administrators.
- E. Device tags can be assigned to MR APs to influence the gateway selection for repeaters in a mesh wireless network.



Correct Answer: AE

Reference: https://documentation.meraki.com/General_Administration/Organizations_and_Networks/Organization_Menu/Manage_Tags

QUESTION 4

Outbound rules	#	Policy	Protocol	Source	Src port	Destination	Dst port	Comment	Logging	Hits	Actions
		Allow	Any	Any	Any	Any	Any	Default rule	Enabled	2	
Add a rule											

Refer to the exhibit. Which outcome occurs when logging is set to Enabled?

- A. Outbound flows are sent to a configured syslog server if a syslog sender is configured for flows.
- B. The hits counter within this section is now enabled.
- C. This firewall rule is now enabled.
- D. Inbound flows are sent to a configured syslog server if a syslog server configured for flows.

Correct Answer: A

QUESTION 5

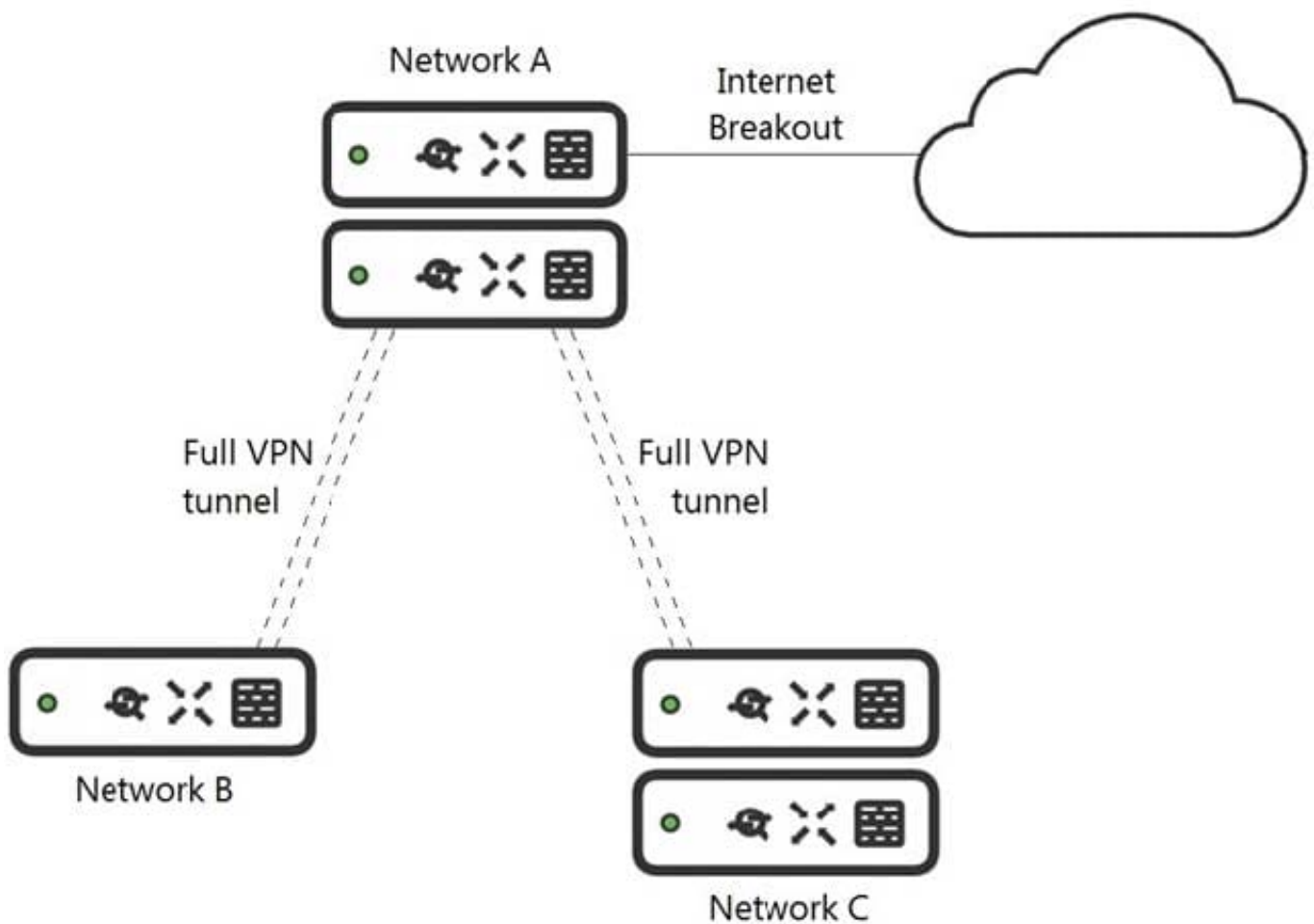
What is the best practice Systems Manager enrollment method when deploying corporate-owned iOS devices?

- A. manual
- B. Apple Configurator
- C. Sentry enrollment
- D. DEP

Correct Answer: B

Reference: https://meraki.cisco.com/lib/pdf/meraki_whitepaper_ios.pdf

QUESTION 6



Refer to the exhibit. What is the minimal Cisco Meraki Insight licensing requirement?

- A. A single Meraki Insight license must be configured on network A to gain Web App Health visibility on network B.
- B. A single Meraki Insight license must be configured on network B to gain Web App Health visibility on network B.
- C. A single Meraki Insight license must be configured on network A, and a single license must be configured on network B, to gain Web App Health visibility on network B.
- D. Two Meraki Insight licenses must be configured on network A to gain Web App Health visibility on network B.
- E. Two Meraki Insight licenses must be configured on network A and a single license must be configured on network B, to gain Web App Health visibility on network B.

Correct Answer: E

QUESTION 7

Which VLAN is used to source pings across the site-to-site VPN when using the MX Live tools?

- A. highest VLAN ID that is configured and set to NO to use VPN
- B. lowest VLAN ID that is configured and set to YES to use VPN



C. highest VLAN ID that is configured and set to YES to use VPN

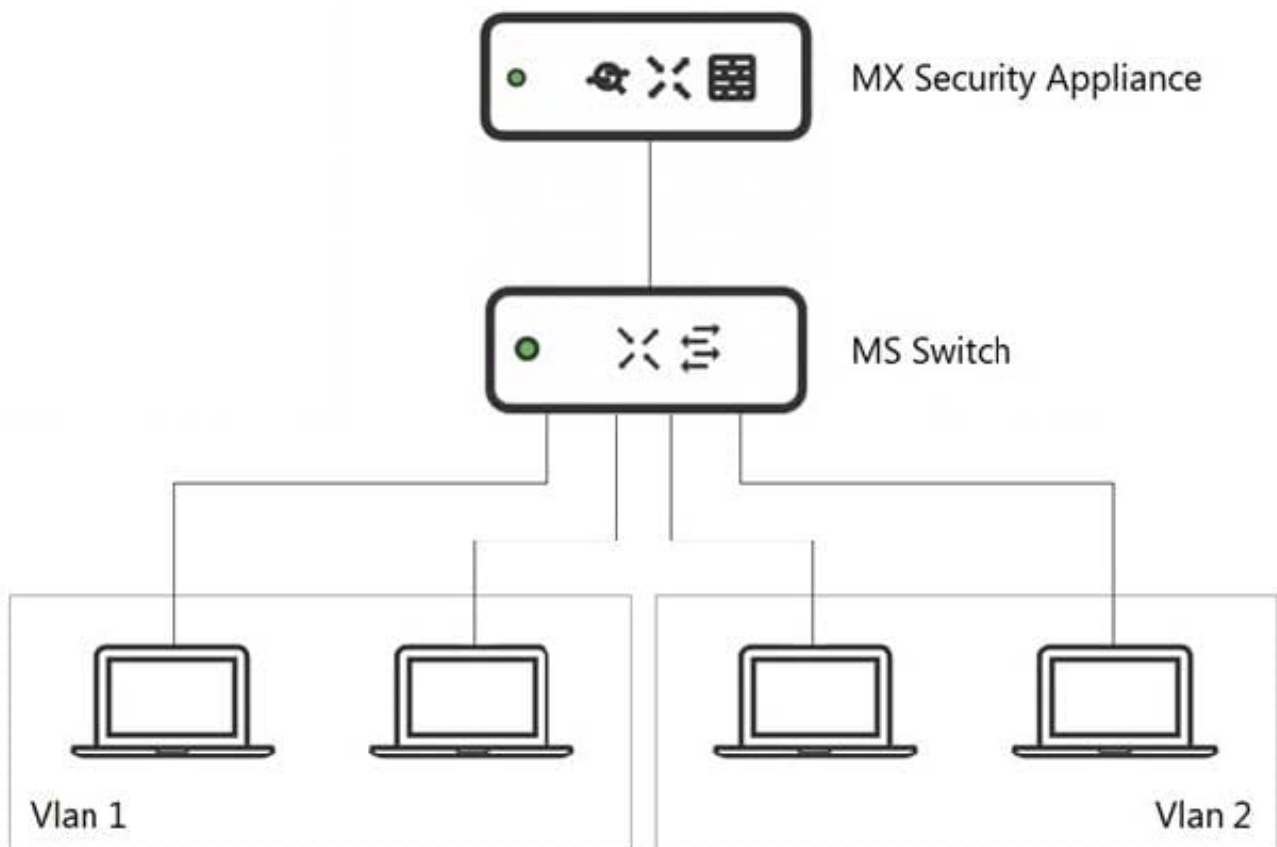
D. lowest VLAN ID configured and set to NO to use VPN

Correct Answer: C

Reference:

https://documentation.meraki.com/General_Administration/Tools_and_Troubleshooting/Using_the_Ping_Live_Tool

QUESTION 8



Refer to the exhibit. What is an advantage of implementing inter-VLAN routing on an MX Security Appliance rather than performing inter-VLAN routing on an MS Series Switch?

- A. The MX appliance performs IDS/IPS for inter-VLAN traffic.
- B. The MX appliance performs AMP for inter-VLAN traffic.
- C. The MX appliance performs data encryption for inter-VLAN traffic.
- D. The MX appliance performs content filtering for inter-VLAN traffic.

Correct Answer: A

**QUESTION 9**

Which order is accurate for a firmware upgrade on MX appliances in a high-availability configuration?

- A. starts on the secondary MX appliance and then occurs on the primary MX appliance
- B. starts on both MX appliances at the same time and then reboots both appliances after traffic on the primary MX appliance ceases
- C. starts on both MX appliances at the same time and then immediately reboots both appliances
- D. starts on the primary MX appliance and then occurs on the secondary MX appliance

Correct Answer: D

Reference: <https://community.meraki.com/t5/Security-SD-WAN/Firmware-Update-to-HA-unit/td-p/47865>

QUESTION 10

Refer to the exhibit. During a Meraki AP deployment, the default SSID that the exhibit shows is broadcast. What causes this behavior?

- A. An AP does not have a wired connection to the network.
- B. An AP cannot connect to the default gateway.
- C. An AP has never connected to the Meraki Cloud Controller.
- D. An AP has Site Survey mode enabled.

Correct Answer: B

Reference: https://documentation.meraki.com/MR/Other_Topics/Troubleshooting_local_connection_issues_using_default_SSID_on_MR_Access_Points



QUESTION 11

A new application needs to be pushed to all iOS devices. Some devices report "NotNow" in the event log and do not install the application. What does the "NotNow" event indicate?

- A. The application requires the most recent iOS version.
- B. The device is locked with a passcode.
- C. The device cannot connect to Apple servers.
- D. The device cannot connect to Cisco Meraki servers.

Correct Answer: B

Reference: <https://community.meraki.com/t5/Mobile-Device-Management/Check-NotNow-Status/td-p/3887>

QUESTION 12

DRAG DROP

Drag and drop the descriptions from the left onto the corresponding MX operation mode on the right.

Select and Place:



The MX appliance acts as a layer 2 bridge

This mode is the default mode of operation

DHCP services can be configured on the MX appliance

VLANs cannot be configured

This mode is generally also the default gateway for devices on the LAN

This mode is not recommended at the network perimeter

No address translation is provided

Client traffic to the internet has the source IP rewritten to match the WAN IP of the appliance

Routed mode

Passthrough mode

Correct Answer:



	Routed mode
	Client traffic to the internet has the source IP rewritten to match the WAN IP of the appliance
	VLANs cannot be configured
	This mode is the default mode of operation
	This mode is generally also the default gateway for devices on the LAN
	Passthrough mode
	The MX appliance acts as a layer 2 bridge
	DHCP services can be configured on the MX appliance
	This mode is not recommended at the network perimeter
	No address translation is provided

QUESTION 13

What happens to an unsupervised iOS device when the "Meraki management" profile is removed?

- A. The "Meraki management" profile is removed. All configuration profiles that Systems Manager pushed remain.
- B. The "Meraki management" profile is removed. All configuration profiles that Systems Manager pushed are also removed.
- C. The "Meraki management" profile is removed and then pushed automatically by Systems Manager.
- D. The "Meraki management" profile cannot be removed.

Correct Answer: B

QUESTION 14

What is the role of the Meraki Dashboard as the service provider when using SAML for single sign-on to the Dashboard?

- A. The Dashboard generates the SAML request.



- B. The Dashboard provides user access credentials.
- C. The Dashboard parses the SAML request and authenticates users.
- D. The Dashboard generates the SAML response.

Correct Answer: A

QUESTION 15

Where should a network admin navigate to investigate wireless mesh information between Meraki APs?

- A. Wireless > Monitor > Access Points > AP > RF
- B. Wireless > Configure > Radio Settings
- C. Wireless > Monitor > Wireless Health
- D. Wireless > Monitor > RF Spectrum

Correct Answer: A

[500-220 Practice Test](#)

[500-220 Exam Questions](#)

[500-220 Braindumps](#)