



4A0-C04^{Q&As}

Nokia NRS II Composite Exam: OSPF version

Pass Nokia 4A0-C04 Exam with 100% Guarantee

Free Download Real Questions & Answers **PDF** and **VCE** file from:

<https://www.pass4itsure.com/4a0-c04.html>

100% Passing Guarantee
100% Money Back Assurance

Following Questions and Answers are all new published by Nokia
Official Exam Center

- ⚙ **Instant Download** After Purchase
- ⚙ **100% Money Back** Guarantee
- ⚙ **365 Days** Free Update
- ⚙ **800,000+** Satisfied Customers



**QUESTION 1**

Click on the exhibit.

```
*A:SRC_R1# show router ldp bindings
```

```
=====
LDP LSR ID: 10.10.10.1
=====
```

```
Legend: U - Label In Use, N - Label Not In Use, W - Label Withdrawn
        S - Status Signaled Up, D - Status Signaled Down
        E - Epipe Service, V - VPLS Service, M - Mirror Service
        A - Apipe Service, F - Fpipe Service, I - IES Service, R - VPRN service
        P - Ipipe Service, WP - Label Withdraw Pending, C - Cpipe Service
        BU - Alternate Next-hop for Fast Re-Route, TLV - (Type, Length: Value)
=====
```

```
LDP Prefix Bindings
=====
```

Prefix Peer	IngLbl	EgrLbl	EgrIntf/ LspId	EgrNextHop
10.10.10.1/32	131071U	--	--	--
10.10.10.2				
10.10.10.2/32	--	131071	1/1/1	10.1.2.2
10.10.10.2				
192.10.1.2/32	--	131067	--	--
10.10.10.2				

```
=====
No. of Prefix Bindings: 3
=====
```

What is the possible reason that the label for prefix 192.10.1.2/32 is not active?

- A. The router does not have a route to reach to the peer 10.10.10.2/32.
- B. The router does not have a route to reach to the prefix 192.10.1.2/32.
- C. The router does not have an export policy defined to export the prefix 192.10.1.2/32 into LDP.
- D. The router receives an invalid label for the prefix 192.10.1.2/32 from its peer.

Correct Answer: B

QUESTION 2

What is the default Nokia 7750 SR TTL of a BGP advertisement between confederation members?

- A. 1



- B. 32
C. 64
D. 255

Correct Answer: A

QUESTION 3

Click the exhibit button.

•OSPF Version : 2	•OSPF Version : 2
•Router Id : 13.0.0.2	•Router Id : 13.0.0.1
•Area Id : 0.0.0.0	•Area Id : 0.0.0.1
•Checksum : e98c	•Checksum : e98c
•Authentication : Null	•Authentication : Null
•Authentication Key: 00 00 00 00 00 00 00 00	•Authentication Key: 00 00 00 00 00 00 00 00
•Packet Type : HELLO	•Packet Type : HELLO
•Packet Length : 48	•Packet Length : 48
•	•
•Network Mask : 255.255.255.252	•Network Mask : 255.255.255.252
•Hello Interval : 10	•Hello Interval : 10
•Options : 02	•Options : 02
•Rtr Priority : 1	•Rtr Priority : 1
•Dead Interval : 40	•Dead Interval : 40
•Designated Router : 0.0.0.0	•Designated Router : 0.0.0.0
•Backup Router : 0.0.0.0	•Backup Router : 0.0.0.0

Two neighboring OSPF routers have exchanged the packets shown. What state is the adjacency in?

- A. Full; both routers are exchanging Helios to maintain the adjacency.
B. The adjacency is down.
C. The adjacency is in exstart state.
D. The adjacency is in the exchange state.

Correct Answer: C

QUESTION 4

An autonomous system has 7 routers configured with BGP. How many iBGP sessions are required for a fully meshed



configuration?

- A. 7
- B. 13
- C. 21 D. 42

Correct Answer: C

QUESTION 5

Which of the following about transport and service tunnels is FALSE?

- A. Service tunnels are unidirectional.
- B. Transport tunnels are unidirectional.
- C. A service will use the same service label for every hop.
- D. A local service requires a transport tunnel.

Correct Answer: D

QUESTION 6

An Nokia 7750 SR receives a route via an IS-IS LSP with internal reach ability, and receives the same route via an OSPF type 5 LSA. If all protocol preferences are default, which route will be installed in the route table?

- A. The route learned via IS-IS will be installed.
- B. The route learned via the OSPF type 5 LSA will be installed.
- C. Both routes will be installed, if ECMP is enabled.
- D. Both routes will be installed, regardless of whether ECMP is enabled.

Correct Answer: A

QUESTION 7

If a Router originates a type 1 router LSA with the E bit set what types of areas can it belong to? Select all that apply.

- A. Not So Stubby Area
- B. Stub Area
- C. Backbone Area
- D. Standard Area



Correct Answer: ACD

QUESTION 8

Which of the following about label modes on the Nokia 7750 SR is FALSE?

- A. RSVP uses downstream on demand label distribution mode.
- B. LDP uses conservative label retention mode.
- C. LDP advertises label mappings to all peers for which it might be a next-hop for a given FEC.
- D. RSVP distributes a label mapping for a FEC when it has been requested to do so.

Correct Answer: B

QUESTION 9

By default, how does a VPLS handle a tagged frame received at the ingress of a null SAP on an Nokia 7750 SR?

- A. The FCS is verified and kept in the customer frame. The VLAN tag is kept and transported over the network.
- B. The FCS is verified and kept in the customer frame. The VLAN tag is removed for transport over the network.
- C. The FCS is verified and removed from the frame. The VLAN tag is kept and transported over the network.
- D. The FCS is verified and removed from the frame. The VLAN tag is removed for transport over the network.

Correct Answer: C

QUESTION 10

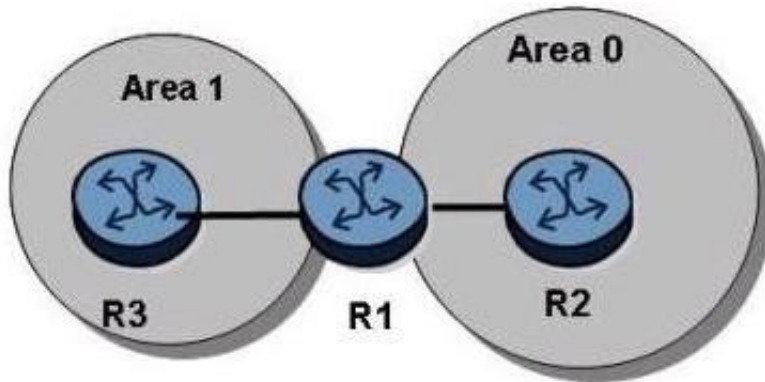
What best describes the type of packets used by OSPF routers to exchange updates on a point-to-point link?

- A. IP packets sent to an IP multicast address.
- B. Ethernet frames sent to an Ethernet multicast address.
- C. IP packets sent to an IP unicast address.
- D. UDP packets sent to an IP multicast address.

Correct Answer: A

QUESTION 11

Click the exhibit button.



```
*A:R3>config>router>ospf# info
-----
area 0.0.0.1
 stub
  exit
 interface "system"
  exit
 interface "toR1"
  interface-type point-to-point
  authentication-type password
  authentication-key
  "i/XVK6X/L7YM44ZaNgVrJKWb5q244dGbFvF4eS5KH," hash2
  exit
 exit
-----
*A:R3>config>router>ospf#
```

```
*A:R1>config>router>ospf# info
-----
area 0.0.0.0
 interface "toR2"
  interface-type point-to-point
  exit
 exit
area 0.0.0.1
 stub
  exit
 interface "system"
  exit
 interface "toR3"
  interface-type point-to-point
  authentication-type password
  message-digest-key 1 md5
  "d70aaU5pMrRRj7xL3w7bZxF9h6rw3D0oYBU0KD.mtFs" hash2
  exit
 exit
-----
*A:R1>config>router>ospf#
```

The OSPF adjacency between routers R3 and R1 is down. What is the problem?



- A. Area 1 of router R1 should not be configured as a stub.
- B. Router R3 has the incorrect authentication key type.
- C. Router R1 has the incorrect authentication key type.
- D. There is not enough information to tell.

Correct Answer: C

QUESTION 12

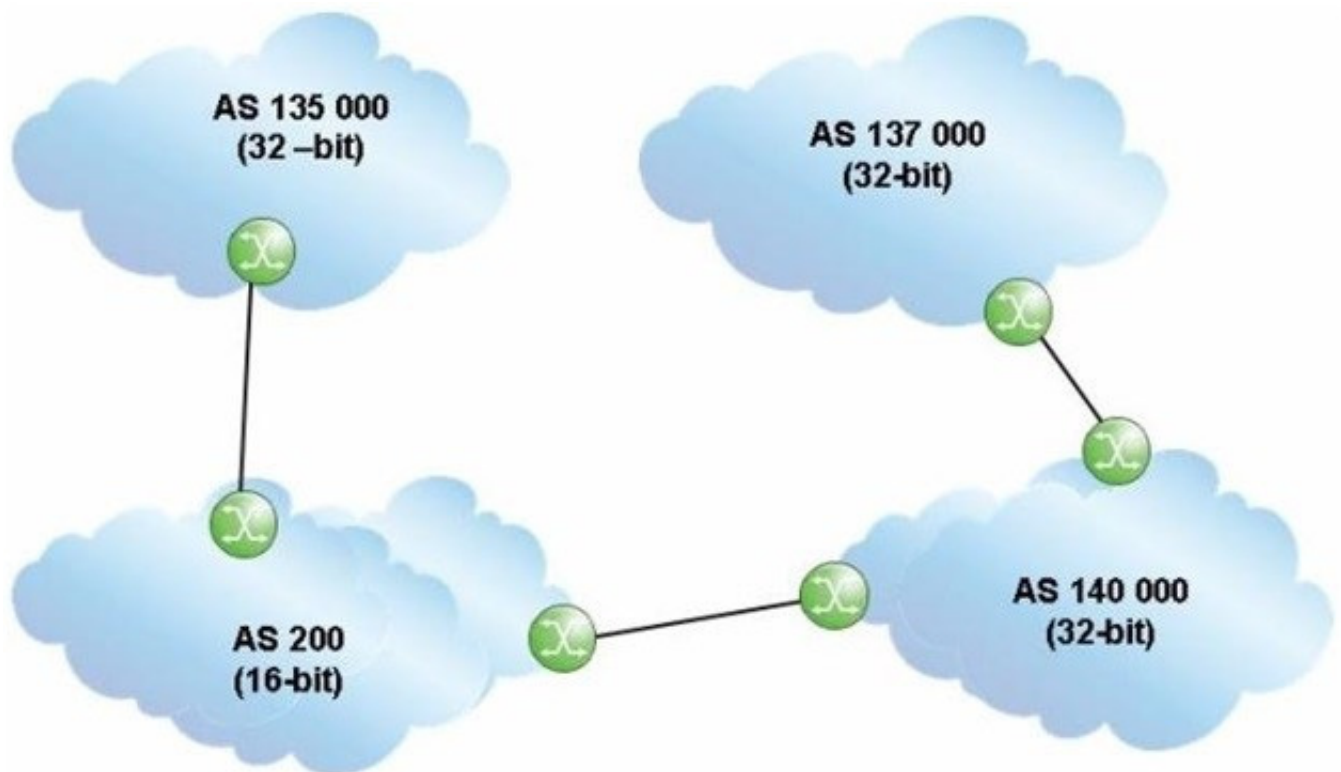
What causes an adjacency to change from down to two ways?

- A. When a link state update is received in response to a link state request.
- B. When a router receives a Hello packet that contains its own router ID in the neighbor list from a neighbor.
- C. When a router receives a database description packet from a neighbor.
- D. When a link state acknowledgement is received in response to a link state update.

Correct Answer: B

QUESTION 13

Click the exhibit.





An update travels from AS 137000 to AS 135000, traversing both 32-bit and 16-bit AS Paths.

What AS Path is seen by AS 200?

- A. 140000 137000
- B. 137000 140000
- C. 23456 23456
- D. 200 140000 137000

Correct Answer: C

QUESTION 14

The Nokia 7750 SR supports which two of the OSPF area types below?

- A. Not So Stubby Areas
- B. Level 1 Areas
- C. Stub Areas
- D. Partially Stubby Areas

Correct Answer: AC

QUESTION 15

Which of the following about the Link LDP discovery process on the Nokia 7750 SR is FALSE?

- A. LDP Hello messages are sent over TCP.
- B. LDP Hello messages are sent to the All Routers address 224.0.0.2.
- C. LDP Hello messages are exchanged between all directly connected LDP enabled routers.
- D. Each LDP enabled router must have its own unique system IP address.

Correct Answer: A

[Latest 4A0-C04 Dumps](#)

[4A0-C04 VCE Dumps](#)

[4A0-C04 Exam Questions](#)