



4A0-106^{Q&As}

Alcatel-Lucent Virtual Private Routed Networks

Pass Alcatel-Lucent 4A0-106 Exam with 100% Guarantee

Free Download Real Questions & Answers **PDF** and **VCE** file from:

<https://www.pass4itsure.com/4a0-106.html>

100% Passing Guarantee
100% Money Back Assurance

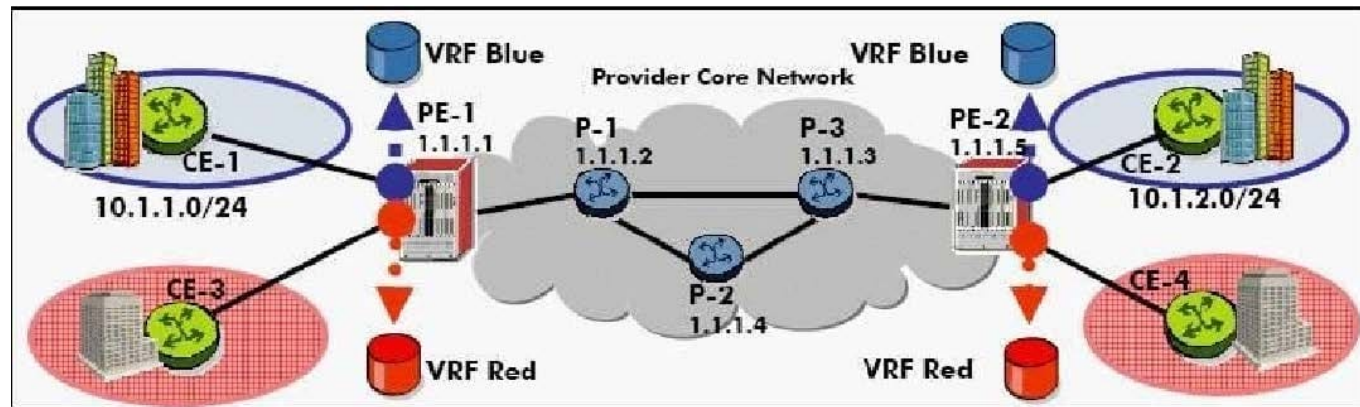
Following Questions and Answers are all new published by Alcatel-Lucent Official Exam Center

- ⚙️ **Instant Download** After Purchase
- ⚙️ **100% Money Back** Guarantee
- ⚙️ **365 Days** Free Update
- ⚙️ **800,000+** Satisfied Customers



**QUESTION 1**

Which command will display the Route Target associated to a specific prefix on an Alcatel-Lucent 7750 SR?



```
=====
Route Table (Router: XXXXXXXXXXXX)
=====
```

Dest Address	Next Hop	Type	Proto	Age	Metric	Pref
1.1.1.1/32	XXXXXXXXXXXX	Local	Local	14h53m05s	0	0
1.1.1.2/32	XXXXXXXXXXXX	Remote	OSPF	14h53m09s	101	10
1.1.1.3/32	XXXXXXXXXXXX	Remote	OSPF	14h53m11s	201	10
1.1.1.4/32	XXXXXXXXXXXX	Remote	OSPF	14h53m10s	201	10
1.1.1.5/32	XXXXXXXXXXXX	Remote	OSPF	14h53m13s	301	10

```
-----
No. of Routes: 5
=====
```

- A. Show router bgp routes
- B. Show router bgp routes detail
- C. Show router route-table
- D. Show router route-table
- E. Either (b) or (d)

Correct Answer: B

QUESTION 2

For a Carrier Supporting Carrier (CSC) VPRN where the customer carrier is an ISP that provides Internet connectivity to its end-customers, which of the following is FALSE?

- A. All traffic exchanged between end-customers is carried over a single CSC VRF.



B. Customer carrier PE routers residing in different sites must run eBGP between them to exchange customers\'\' routes.

C. The customer carrier network can be a pure IP network.

D. MPLS can be used in the customer carrier network to improve scalability.

Correct Answer: B

QUESTION 3

When VPRN Outbound Route Filtering (ORF) is enabled, each PE sends its ORF list to its peer using which of the following BGP message types?

A. Open

B. Update

C. Route Refresh

D. Notification

Correct Answer: C

QUESTION 4

Which of the following is a characteristic of inter-AS model C VPRN?

A. A data packet destined to a remote AS is encapsulated with three labels within the originating AS.

B. The ASBR redistributes VPN-IPv4 updates to its ASBR eBGP peers.

C. PE routers in different ASes exchange IPv4 routes directly between each other using eBGP.

D. The advertising ASBR assigns a new label to the route before sending it via an MP-eBGP update to its ASBR peer.

Correct Answer: A

QUESTION 5

VPN-IPv4 addressing is made unique by defining an address structure consisting of:

A. A 64-bit Route Target followed by a 32-bit IPv4 address.

B. A 64-bit Route Distinguisher followed by a 32-bit IPv4 address.

C. A 32-bit Route Distinguisher followed by a 32-bit IPv4 address.

D. A 32-bit Route Target followed by a 32-bit IPv4 address.

Correct Answer: B



QUESTION 6

Which of the following describes the goal of an Extranet VPRN?

- A. To reduce the number of VPRN tunnels required.
- B. To allow routes to be exchanged between all, or selected, sites of one VPRN, and all, or selected, sites of a second VPRN.
- C. To simplify the administration of multiple VPRNs.
- D. To allow network access between the headquarter sites of each VPRN service and a shared VPRN service offered by a third party.

Correct Answer: B

QUESTION 7

In a traditional layer 3 VPN which of the following will be an issue when there is overlapping address space between two customers? Choose the best answer.

- A. There will be increased memory usage on the PE
- B. There will be increased CPU utilization on the PE
- C. The CE will reject the overlapping prefix
- D. The PE will not recognize the prefixes as being different
- E. There is no issue with overlapping address space in a traditional Layer 3 VPN

Correct Answer: D

QUESTION 8

What operation does a P device perform when it receives a labeled packet for a VPRN service?

- A. It forwards the packet based on the label signaled by MP-BGP.
- B. It decrements the TTL and forwards the packet based on the inner label.
- C. It swaps the outer label then forwards the packet.
- D. The P router does not perform any operations on labeled packets.

Correct Answer: C

QUESTION 9



In a Carrier Supporting Carrier (CSC) VPRN, which of the following is a benefit to the network provider?

- A. No need to build and maintain its own backbone.
- B. The solution scales as the number of serviced customer carriers increases.
- C. The solution scales as the number of VPNs offered by the customer carriers increases.
- D. The ability to manage end-customer services.

Correct Answer: C

QUESTION 10

Which of the following about inter-AS model B VPRN is TRUE?

- A. The ASBRs use MP-eBGP to peer with each other and exchange IPv4 routes between autonomous systems.
- B. The ASBRs use MP-iBGP to peer with PE routers in their autonomous system and exchange VPN-IPv4 routes.
- C. The ASBRs maintain a mapping of labels for IPv4 routes exchanged between autonomous systems.
- D. The ASBRs require per-VPRN configuration.

Correct Answer: B

QUESTION 11

When configuring BGP as the PE-CE protocol on an Alcatel-Lucent 7750 SR, the configuration on the CE is done under the _____ context and the PE configuration is under the _____ context.

```
A:CE-1# show router bgp routes
=====
BGP Router ID : 10.10.10.76      AS : 65200      Local AS : 65200
=====
Legend -
Status codes : u - used, s - suppressed, h - history, d - decayed, * - valid
Origin codes : i - IGP, e - EGP, ? - incomplete, > - best
=====
BGP Routes
=====
Flag  Network      Nexthop      LocalPref  MED
     VPN Label
-----
u*>?  10.1.2.0/24    10.16.1.1    none       none
                    65100 65100
u*>?  10.10.10.78/32 10.16.1.1    none       none
                    65100 65100
u*>i  10.32.1.0/24   10.16.1.1    none       none
                    65100
```



- A. Global, router
- B. Router, router
- C. Service, router
- D. Router, service
- E. Service, service
- F. Router, global

Correct Answer: D

QUESTION 12

Which of the following protocols does the Alcatel-Lucent 7750 SR support to signal VPRN service labels?

- A. Targeted-LDP
- B. BGP
- C. MP-BGP
- D. RSVP-TE

Correct Answer: C

QUESTION 13

The policies shown below from the configuration of an Alcatel-Lucent 7750 SR have been created to implement an Extranet VPRN between the main sites of two separate VPRNs. How should these policies be applied?

- A. ample Policy should be applied as an export policy on the PE connected to the main site of Customer 1
- B. ample Policy 3 should be applied as an export policy on the PE connected to the main site of Customer 2
- C. ample Policy 3 should be applied as an export policy on both PEs connected to the main site of Customer 1 and the main site of Customer 2
- D. ample Policy should be applied as an export policy on both PEs connected to the main site of Customer 1 and the main site of Customer 2
- E. ample Policy should be applied as an export policy on all PEs connected to sites of Customer 1

Correct Answer: A

QUESTION 14

When an Alcatel-Lucent 7750 SR receives a BGP update containing an AS-Path loop, what is the default action?



```
=====
Service Basic Information
=====
Service Id       : 3                      Vpn Id         : 0
Service Type    : VPRN
Description     : Customer VPRN Service
Customer Id     : 30
Last Status Change: 05/26/2006 15:59:51
Last Mgmt Change : 05/27/2006 08:29:20
Admin State     : Up                      Oper State      : Up

Route Dist.     : 65100:30
AS Number       : None                    Router Id       : 10.10.10.149
ECMP            : Enabled                  ECMP Max Routes : 1
Max Routes      : No Limit                 Auto Bind       : None
Vrf Target      : target:65100:30
Vrf Import      : None
Vrf Export      : None

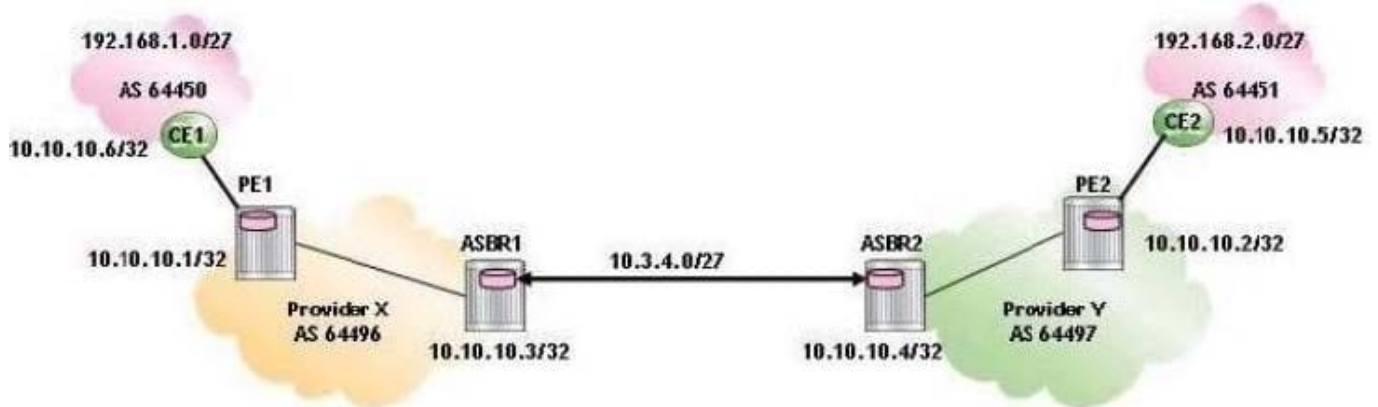
SAP Count       : 1                      SDP Bind Count  : 1
=====
Service Access & Destination Points
=====
Identifier              Type      AdmMTU  OprMTU  Adm  Opr
-----
sap:1/1/1               null     1514    1514    Up   Up
sdp:1:1 S(1.1.1.5)      n/a      0       1518    Up   Up
```

- A. The update is accepted and the route installed in the route table.
- B. The update is accepted but the route will not be installed in the route table
- C. The update is rejected
- D. The peer session is dropped

Correct Answer: A

QUESTION 15

Click the exhibit.



For the inter-AS model A VPRN shown, which of the following about the route advertisement of 192.168.1.0/27 is FALSE?

- A. PE1 advertises 64496:1:192.168.1.0/27 route update to ASBR1.
- B. PE2 advertises 192.168.1.0/27 route update to CE2.
- C. ASBR1 advertises 64496:1:192.168.1.0/27 route update to ASBR2.
- D. ASBR2 advertises 64497:1:192.168.1.0/27 route update to PE2.

Correct Answer: C

[Latest 4A0-106 Dumps](#)

[4A0-106 Practice Test](#)

[4A0-106 Study Guide](#)