



4A0-105^{Q&As}

Alcatel-Lucent Virtual Private LAN Services

Pass Alcatel-Lucent 4A0-105 Exam with 100% Guarantee

Free Download Real Questions & Answers **PDF** and **VCE** file from:

<https://www.pass4itsure.com/4a0-105.html>

100% Passing Guarantee
100% Money Back Assurance

Following Questions and Answers are all new published by Alcatel-Lucent Official Exam Center

- ⚙️ **Instant Download** After Purchase
- ⚙️ **100% Money Back** Guarantee
- ⚙️ **365 Days** Free Update
- ⚙️ **800,000+** Satisfied Customers



**QUESTION 1**

Which protocol is used to signal the status of the active links between the PE and the CE in MC- LAG?

- A. MSTP
- B. MCLAG
- C. LACP
- D. DHCP
- E. A proprietary protocol

Correct Answer: C

QUESTION 2

Two management VPLSs have been created. mVPLS 1 and mVPLS 2. Two user VPLS services exist. uVPLS 10 and uVPLS 20. What command can be used to determine which management VPLS is managing uVPLS 10?

- A. show stp 10
- B. show service vpls 1 stp
- C. show service id 10 stp
- D. show service id 1 stp or show service id 2 stp

Correct Answer: C

QUESTION 3

Which of the following SAP encapsulations supports only one service on a port?

- A. Dot1Q
- B. Null
- C. Q-in-Q
- D. Ipcp
- E. BCP

Correct Answer: B

**QUESTION 4**

In Active/Standby pseudowires a failed pseudowire has recovered. Under what circumstances will the active pseudowire revert to the previously failed link?

- A. It will always revert to the previously failed link.
- B. It will never revert to the previously failed link.
- C. It will revert if the precedence of the previously failed link is set to 0 or "primary".
- D. It will revert if the precedence of the previously failed link is lower than the currently active link

Correct Answer: C

QUESTION 5

What are the limitations of a traditional layer 2 switch? (Choose 3)

- A. Isolates collision domains.
- B. Requires layer 2 loop prevention.
- C. Slow response to topology changes.
- D. Limited to 4094 vlans per switch.
- E. Increased flooding.

Correct Answer: BCD

QUESTION 6

Which of the following statements about a management VPLS are true? (Choose 2)

- A. A management VPLS carries customer traffic over the non-blocking spoke-SDP
- B. A VPLS service must be defined as a management VPLS upon creation to take on the role of a management VPLS
- C. The state of a spoke-SDP within a user VPLS will take on the state of the spoke-sdp within the management VPLS.
- D. The management VPLS must be created before the user VPLS.

Correct Answer: BC

QUESTION 7

What are the benefits of a hierarchical VPLS architecture? (Choose 3)

- A. Increases scalability

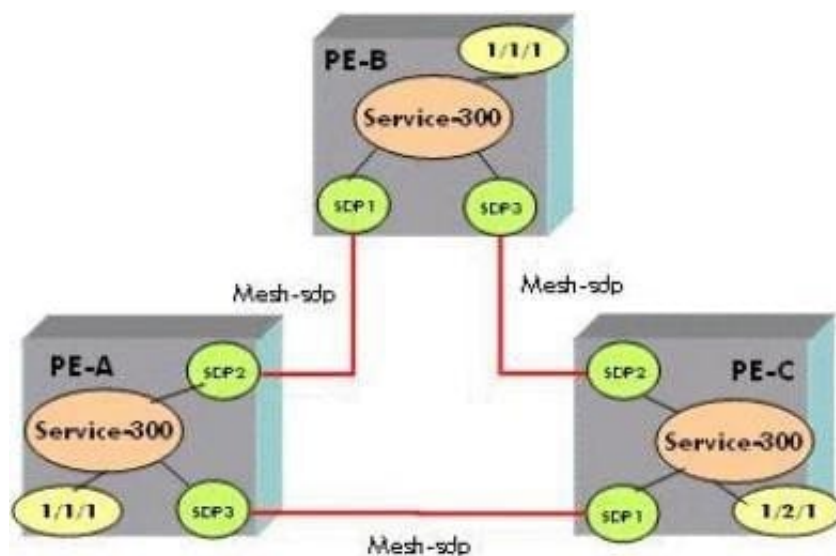


- B. Reduces the FDB size within a VPLS instance
- C. Reduces replication and bandwidth utilization from the MDU device to the core network
- D. Easier to manage
- E. Reduces the routing table size

Correct Answer: ACD

QUESTION 8

Click on the exhibit below.



A new router named PE-D is to be directly connected to PE-C and is required to be added to the existing VPLS 300. The design requires the least amount of signaling, the least amount of configuration changes for existing sites and the new site has to have access to all existing sites.

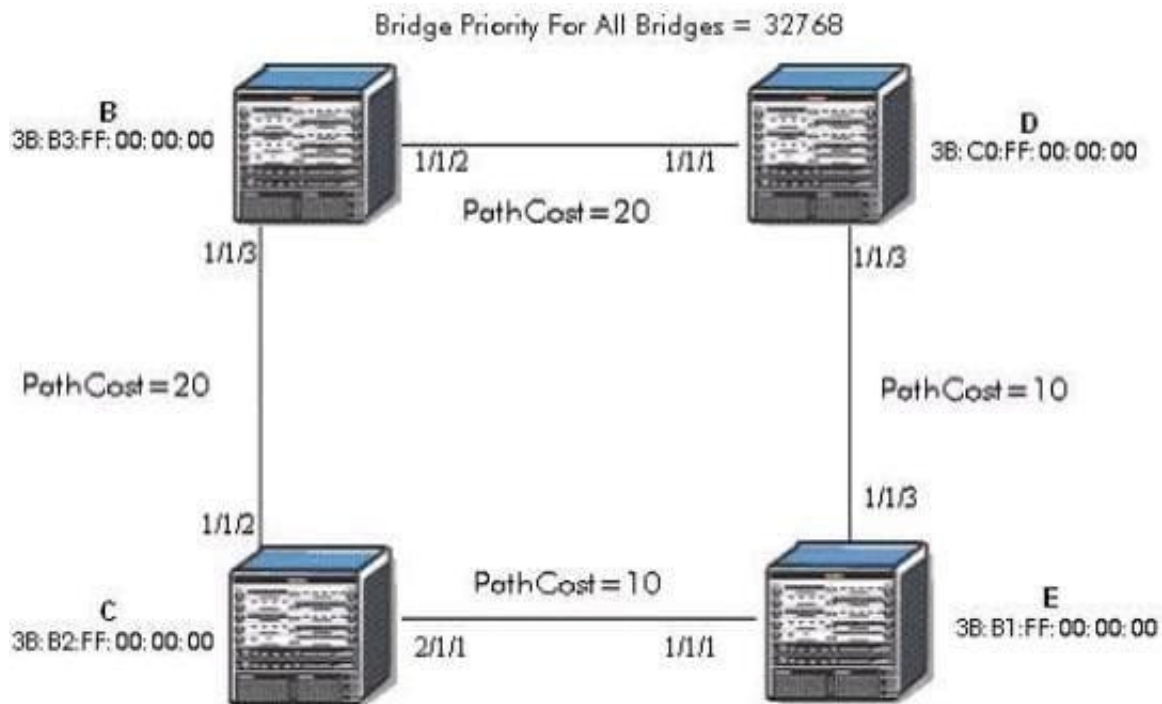
How should the new site be added to VPLS 300?

- A. Configure a mesh-sdp between all existing PE routers and the new PE router
- B. Configure a mesh-sdp between PE-C and PE-D
- C. Configure a spoke-sdp between PE-C and PE-D.
- D. It is not possible to meet the design requirements.

Correct Answer: C

**QUESTION 9**

Click on the exhibit below.



Which port will become the alternate port?

- A. Bridge B 1/1/3
- B. Bridge B 1/1/2
- C. Bridge C 1/1/2
- D. Bridge C 2/1/1
- E. Bridge D 1/1/1
- F. Bridge D 1/1/3
- G. Bridge E 1/1/1
- H. Bridge E 1/1/3

Correct Answer: B

QUESTION 10

Click on the exhibit below.



```
A:PE-Z>config>service# show service id 9000 base
```

```
=====
Service Basic Information
=====
```

```
Service Id       : 9000                Vpn Id           : 0
Service Type     : VPLS
Customer Id      : 100
Last Status Change: 02/12/2007 13:17:11
Last Mgmt Change  : 02/12/2007 13:17:11
Admin State      : Up                   Oper State        : Up
MTU              : 1514                 Def. Mesh VC Id   : 1000
SAP Count        : 0                   SDP Bind Count    : 1
Send Flush on Fail: Disabled
```

```
=====
Service Access & Destination Points
=====
```

```
Identifier                Type      AdmMTU  OprMTU  Adm    Opr
=====
```

Based on the following output what will the vc-id be of any mesh-sdp bound to this service?

- A. 9000
- B. 1514
- C. 1000
- D. 100

Correct Answer: C

QUESTION 11

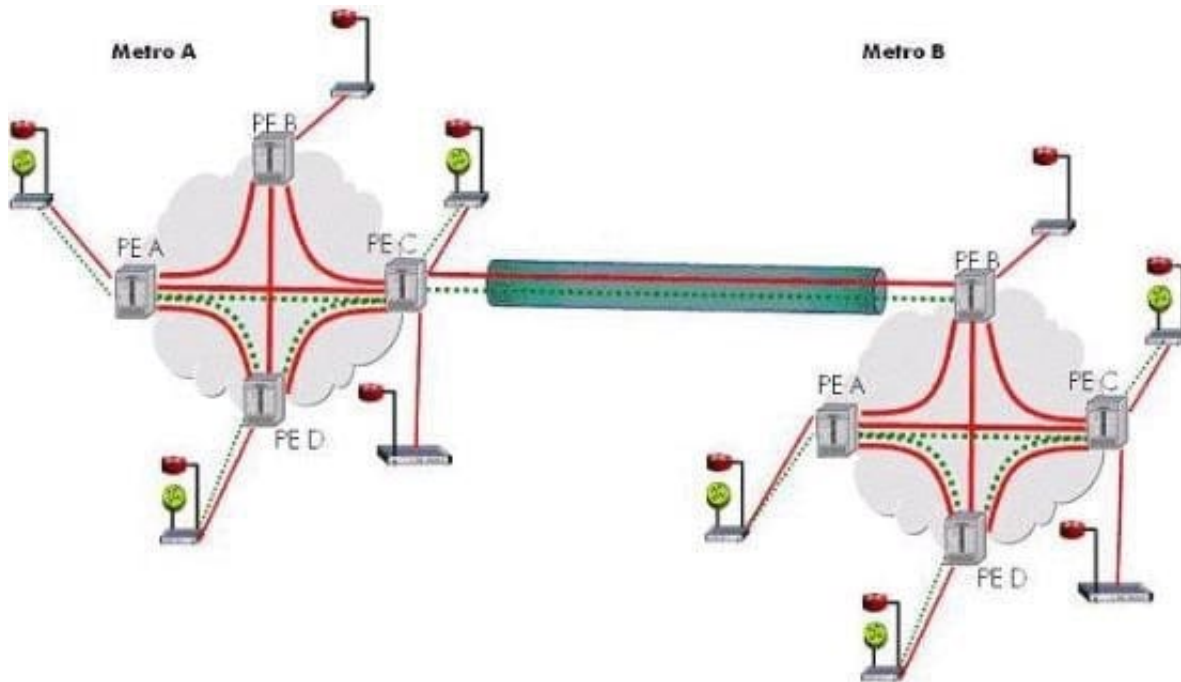
MAC explosion is best described as a large amount of MAC addresses being withdrawn and relearned?

- A. TRUE
- B. FALSE

Correct Answer: A

QUESTION 12

Click on the exhibit below.



Assuming there is a full mesh of mesh-SDPs between the PEs within each metro network and a spoke-SDP between PE-C of Metro A and PE-B of Metro B. how is traffic forwarded from PE-A in Metro A to PE-D of Metro B? Select the most accurate statement.

- A. An LSP must be configured between PE-A and PE-D for this traffic to be forwarded.
- B. A VPLS FDB lookup is done at PE-A of Metro A only
- C. An SDP must be configured between PE-A of Metro A and PE-D of Metro D for this traffic to be forwarded
- D. A VPLS FDB lookup is done at PE-A and PE-C of Metro A and PE-B of Metro B

Correct Answer: D

QUESTION 13

If the command "disable-learning" has been added at the VPLS level, then MAC entries which have already been learned will not be aged.

- A. TRUE
- B. FALSE

Correct Answer: B

QUESTION 14

What is the MTU impact on the SDP path-mtu if fast reroute, one-to-one mode is implemented on the LSP?



- A. There will be no impact on the path-mtu.
- B. The path-mtu will decrease by 4 bytes.
- C. The path-mtu will increase by 4 bytes.
- D. The path-mtu will decrease by 8 bytes.
- E. The path-mtu will increase by 8 bytes.

Correct Answer: A

QUESTION 15

Multiple VPLS services can be offered over the same set of LSP tunnels?

- A. TRUE
- B. FALSE

Correct Answer: A

[4A0-105 PDF Dumps](#)

[4A0-105 Practice Test](#)

[4A0-105 Braindumps](#)