



# 4A0-104<sup>Q&As</sup>

Alcatel-Lucent Services Architecture

## Pass Alcatel-Lucent 4A0-104 Exam with 100% Guarantee

Free Download Real Questions & Answers **PDF** and **VCE** file from:

<https://www.pass4itsure.com/4a0-104.html>

100% Passing Guarantee  
100% Money Back Assurance

Following Questions and Answers are all new published by Alcatel-Lucent Official Exam Center

- ⚙️ **Instant Download** After Purchase
- ⚙️ **100% Money Back** Guarantee
- ⚙️ **365 Days** Free Update
- ⚙️ **800,000+** Satisfied Customers



**QUESTION 1**

Choose the following components that are necessary for the configuration of a mirror service. (Choose two.)

- A. A mirror destination to indicate which ports to monitor.
- B. A mirror source to indicate which ports to monitor.
- C. A mirror destination to indicate on which sap or sdp traffic should be replicated.
- D. A mirror source to indicate on which sap or sdp traffic should be replicated

Correct Answer: BC

---

**QUESTION 2**

In a Layer 2 encapsulation, using Martini, what does the second (bottom) label represent?

- A. Tunnel Label
- B. VC Label
- C. Operational Control Word
- D. VPI
- E. VCI

Correct Answer: B

---

**QUESTION 3**

Which of the following commands is used in an RSVP signaled MPLS tunnel to validate the path MTU based on signaling across the LSP?

- A. Path MTU is always calculated from the MTU of the egress network port on the head end PE.
- B. oam sdp-mtu
- C. adspec
- D. cspf

Correct Answer: C

---

**QUESTION 4**

Which of the following statements best describes how an FDB is populated with MAC addresses in a VPLS service?



- A. A VPLS service does not use an FDB.
- B. The router reads the destination MAC address of packets passing through the service.
- C. The router reads the source MAC address of packets passing through the service.
- D. The router uses reverse ARP (RARP) to resolve the MAC addresses for unknown destinations.
- E. The router is programmed with MAC addresses by the network administrator.

Correct Answer: C

---

#### QUESTION 5

Which of the following statements about VPRN is NOT true? (Choose two.)

- A. VPRN is an IP service that connects multiple sites in a single routed domain over the provider-managed IP/MPLS network.
- B. Each VPRN consists of a set of customer sites that must connect to the same PE router
- C. In a VPRN service, each customer router becomes a routing peer to other customer routers
- D. VPRN provides customer routers with transparent IP connectivity without knowledge of the MPLS core

Correct Answer: BC

---

#### QUESTION 6

What is the minimum Ethernet physical network MTU required for a Layer 2 service on a GRE encapsulated SDP with a service MTU of 1514?

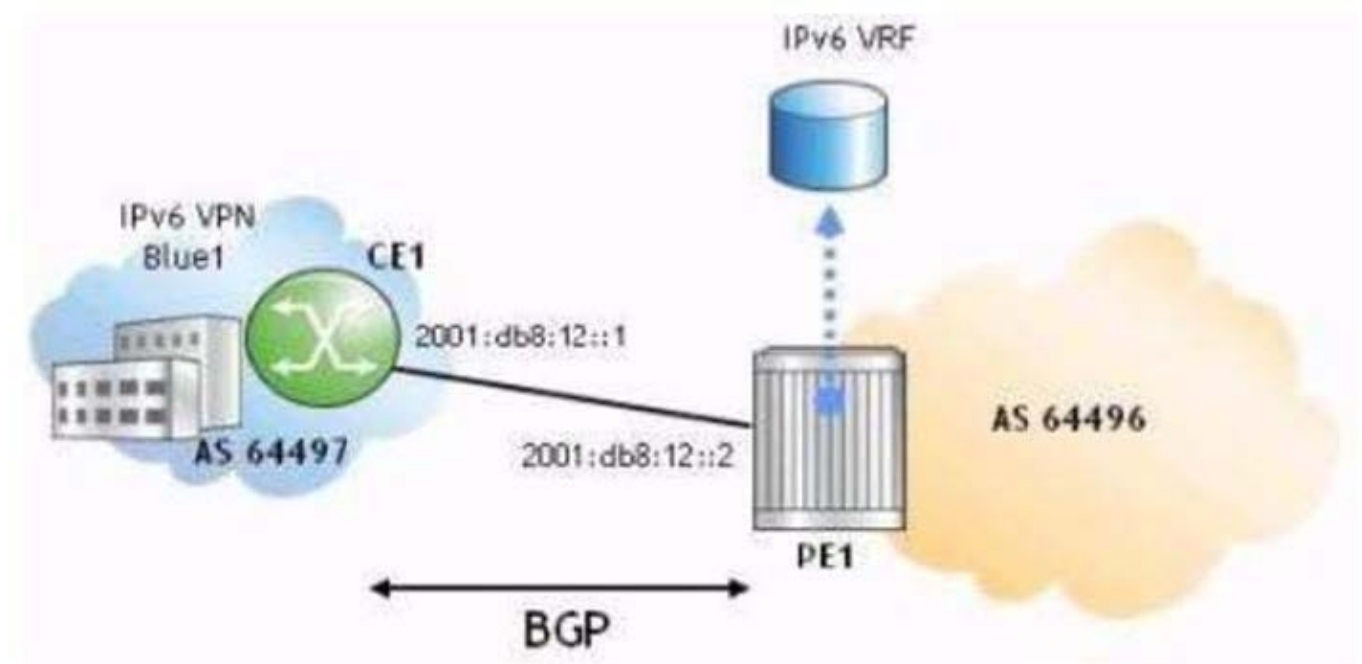
- A. 1514
- B. 1526
- C. 1548
- D. 1556
- E. 1536

Correct Answer: D

---

#### QUESTION 7

Click the exhibit button.



Part of a 6VPE deployment is shown. Which of the following is the correct configuration and context on router CE1 for a BGP peering session with 6VPE1?



○ A. CE1>config>service>vpn>bgp# info

```
-----  
group "to6VPE1"  
  family ipv6  
  export "direct-bgp"  
  neighbor 2001:db8:12::1  
    peer-as 64497  
  exit  
exit
```

○ B. CE1>config>service>vpn>bgp# info

```
-----  
group "to6VPE1"  
  family ipv6  
  export "direct-bgp"  
  neighbor 2001:db8:12::2  
    peer-as 64496  
  exit  
exit
```

○ C. CE1>config>router>bgp# info

```
-----  
group "to6VPE1"  
  family ipv6  
  export "direct-bgp"  
  neighbor 2001:db8:12::1  
    peer-as 64497  
  exit  
exit
```

○ D. CE1>config>router>bgp# info

```
-----  
group "to6VPE1"  
  family ipv6  
  export "direct-bgp"  
  neighbor 2001:db8:12::2  
    peer-as 64496  
  exit  
exit
```

A. Option A

B. Option B



C. Option C

D. Option D

Correct Answer: D

---

#### QUESTION 8

A service can be either local or distributed.

A. TRUE

B. FALSE

Correct Answer: A

---

#### QUESTION 9

Which of the following statements are TRUE regarding a fully meshed VPLS service with a default setting? (Choose three.)

A. The vc-id on the mesh-sdp must be explicitly configured.

B. The vc-id on the mesh-sdp is automatically assigned by a PE using the service id.

C. The VPLS service id, on all PE routers, does not have to match.

D. The VPLS service id, on all PE routers, must match.

E. If dynamic signaling is required, the signaling on all PE routers must be set to TLDP in the configuration of the SDPs.

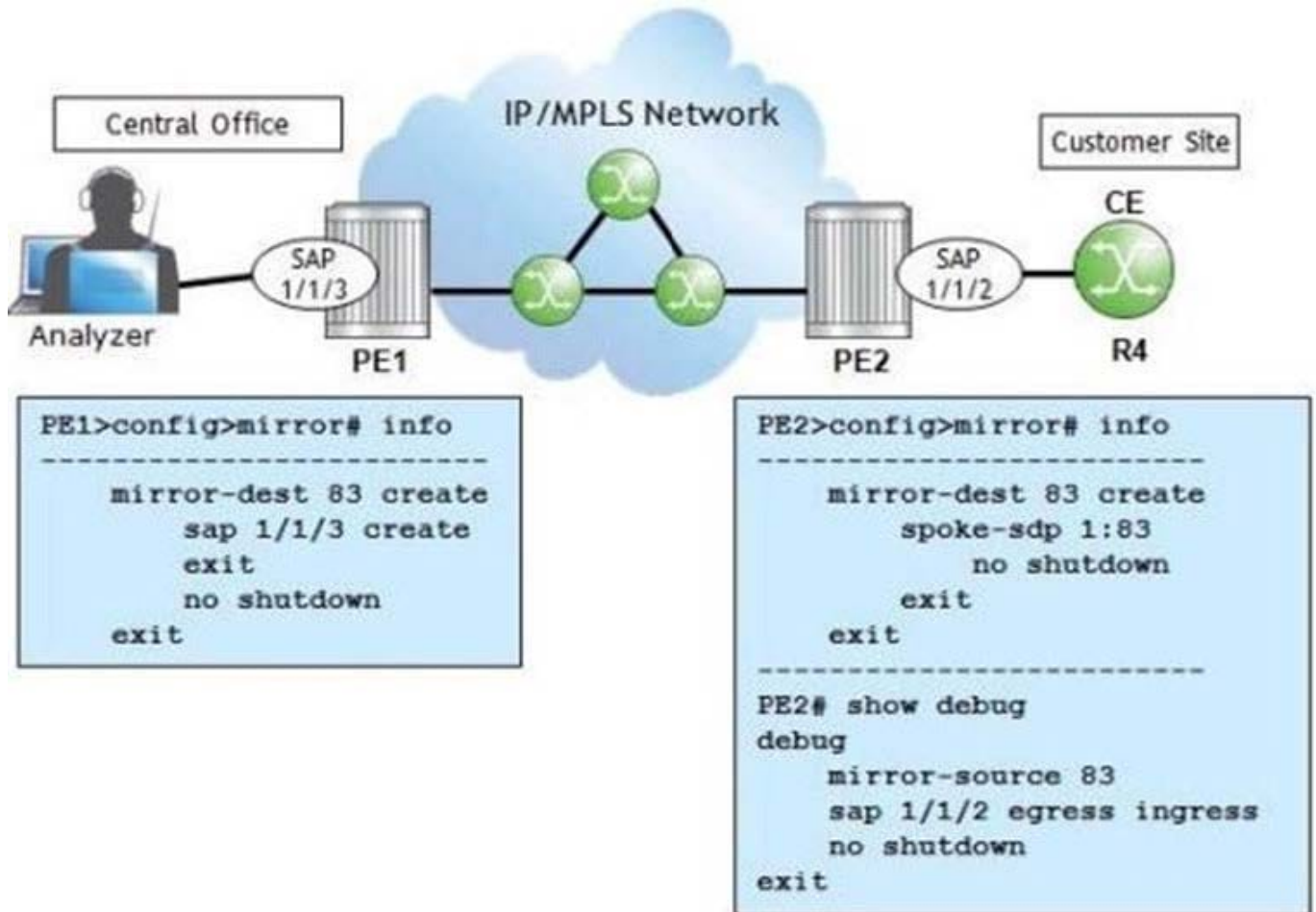
F. The signaling on all PE routers will default to TLDP in the configuration of the SDPs; therefore, no configuration change is required for dynamic signaling.

Correct Answer: ADF

---

#### QUESTION 10

Click the exhibit.



PE1 and PE2 are Nokia 7750 SRs. What needs to be added to PE1's configuration to mirror traffic between PE2 and the customer site?

- A. A "remote-source" needs to be added to the mirror destination on PE1.
- B. A mirror source needs to be added to PE1 with a "remote-source".
- C. This is not possible since the protocol analyzer is located at the Central Office. It needs to be at the customer site.
- D. A mirror source with SAP 1/1/2 needs to be added on PE1.

Correct Answer: A

### QUESTION 11

Which of the following statements is FALSE regarding SAPs?

- A. VPWS: SAPs can be defined on Ethernet, POS, Sonet/SDH, or TDM channels.
- B. VPWS: Two SAPs are defined for a service that originates and terminates on the same Nokia 7750 SR
- C. VPLS: More than two SAPs can be defined in a service.



D. VPWS: SAPs are associated with an IP interface.

Correct Answer: D

---

#### QUESTION 12

Which of the following can be used to detect the smallest path MTU in an RSVP signaled MPLS tunnel?

- A. ADSPEC
- B. CSPF
- C. Service ping
- D. LSP trace

Correct Answer: A

---

#### QUESTION 13

Service tunnels and transport tunnels are bidirectional and only require the operator to configure the tunnel on one router.

- A. TRUE
- B. FALSE

Correct Answer: B

---

#### QUESTION 14

Which of the following about Hierarchical VPLS is FALSE?

- A. They allow a VPLS to scale more easily.
- B. They use mesh SDPs to connect smaller VPLSes together.
- C. They allow a service to span multiple metro networks.
- D. They simplify the configuration required when adding new PEs.

Correct Answer: B

---

#### QUESTION 15

Which utility on the Nokia 7750 SR can be used to investigate an MPLS path?

- A. lsp-trace





B. Idp-trace

C. Sdp-ping

D. Svc-ping

E. Ping

Correct Answer: A

[4A0-104 PDF Dumps](#)

[4A0-104 Study Guide](#)

[4A0-104 Exam Questions](#)