



4A0-102^{Q&As}

Alcatel-Lucent Border Gateway Protocol

Pass Alcatel-Lucent 4A0-102 Exam with 100% Guarantee

Free Download Real Questions & Answers **PDF** and **VCE** file from:

<https://www.pass4itsure.com/4a0-102.html>

100% Passing Guarantee
100% Money Back Assurance

Following Questions and Answers are all new published by Alcatel-Lucent Official Exam Center

- ⚙️ **Instant Download** After Purchase
- ⚙️ **100% Money Back** Guarantee
- ⚙️ **365 Days** Free Update
- ⚙️ **800,000+** Satisfied Customers



**QUESTION 1**

An Alcatel-Lucent 7750 SR receives two updates for the same route with local preferences 200 and 300, respectively. What local preference is sent to eBGP peers?

- A. 100
- B. 200
- C. 300
- D. None

Correct Answer: D

QUESTION 2

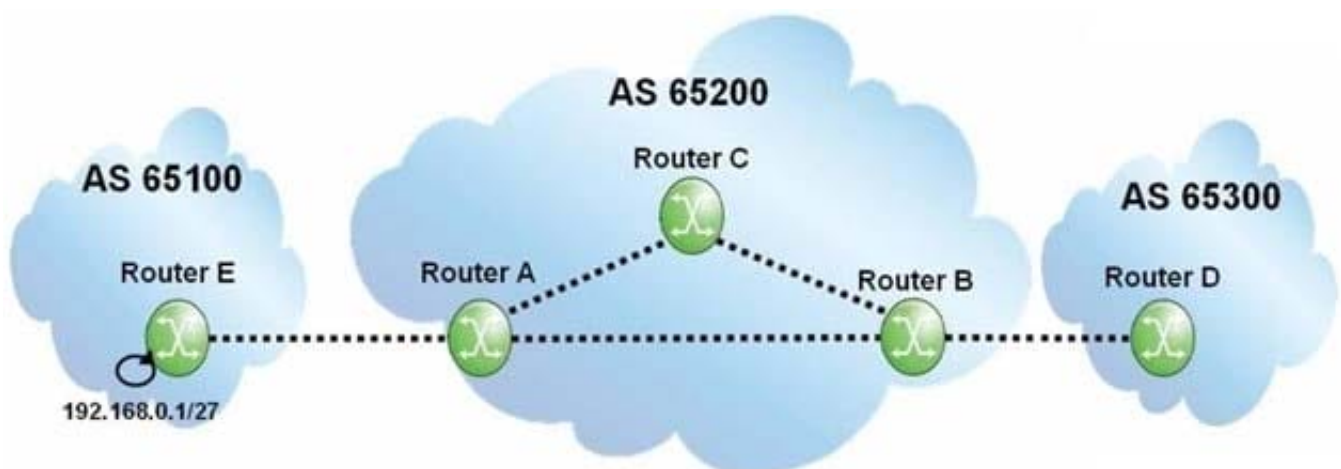
How are policy direction and data flow related on the Alcatel-Lucent 7750 SR?

- A. Import policies affect ingress data flow.
- B. Export policies affect ingress data flow.
- C. Both import and export policies affect ingress data flow.
- D. Policy direction and data flow are independent.

Correct Answer: B

QUESTION 3

Click the exhibit.



Assuming that none of the routers within AS 65200 is configured with next-hop-self", what will the BGP update for the 192.168.0.1/27 prefix contain when it arrives at router B?



- A. AS Path of 65200 65100, Next Hop of router A.
- B. AS Path of 65200 65100, Next Hop of router E.
- C. AS Path of 65100, Next Hop of router E.
- D. AS Path of 65100, Next Hop of router A.

Correct Answer: C

QUESTION 4

Why is a full mesh of iBGP peers required?

- A. To ensure proper route propagation inside a transit AS.
- B. To ensure that all routers are directly connected.
- C. To ensure that all routers run iBGP inside a transit AS.
- D. To maximize control plane scalability.

Correct Answer: A

QUESTION 5

Which of the following regarding BGP authentication on the Alcatel-Lucent 7750 SR is FALSE?

- A. Authentication is performed before establishing the BGP session.
- B. Authentication can only be configured on the group or neighbor level.
- C. By default, MD5 authentication is disabled.
- D. Peer authentication may be optionally requested in an open message.

Correct Answer: B

QUESTION 6

Which of the following statements regarding the Originator_ID attribute is TRUE?

- A. The BGP router that originates an update sets the Originator_ID.
- B. The Originator_ID is set to the Cluster ID of the advertising router reflector.
- C. Both confederation and route reflector topologies use the Originator_ID.
- D. A BGP router ignores an update that contains its own BGP router ID as Originator_ID.

Correct Answer: D

**QUESTION 7**

What will happen if an update is received with an unrecognized optional non-transitive attribute?

- A. The router will accept the update and send a notification.
- B. The router will not accept the update and send a notification.
- C. The router will accept the update and ignore the attribute.
- D. The router will accept the update and propagate the attribute.

Correct Answer: C

QUESTION 8

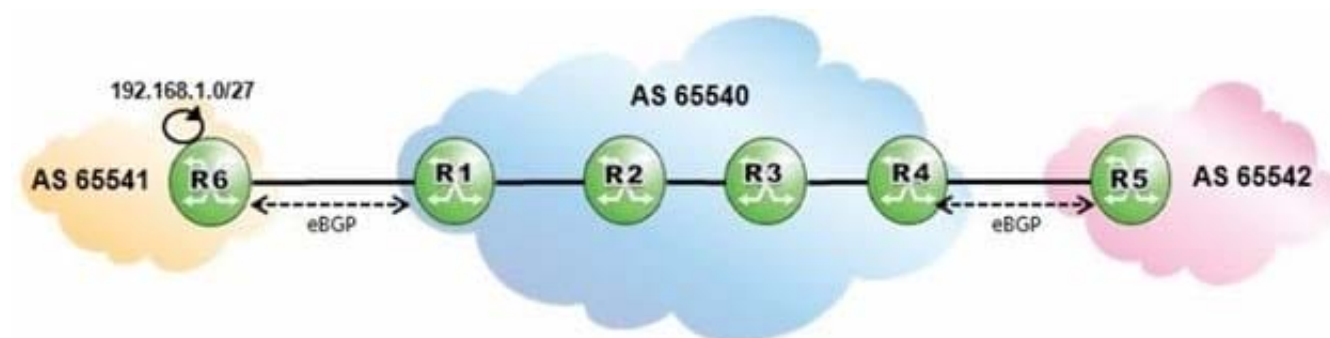
Which of the following statements regarding BGP Add-Paths is FALSE?

- A. Add-Paths allows non-best paths to be advertised to a peer.
- B. Add-Paths capabilities are exchanged between peers after the BGP session is established.
- C. A BGP speaker must advertise the capability to receive multiple paths from its peer.
- D. A BGP speaker must advertise the capability to send multiple paths to its peer.

Correct Answer: B

QUESTION 9

Click on the exhibit.



AS 65540 is using MPLS to provide BGP shortcuts for its iBGP routing. Which routers must be configured with the "configure router bgp igp-shortcuts rsvp-te" command?

- A. Routers R6, R1, R4 and R5.
- B. Routers R1 and R4.



C. Routers R1, R2, R3 and R4.

D. Routers R2 and R3.

Correct Answer: B

QUESTION 10

A confederated AS is comprised of three members. One member is comprised of 4 routers, while the other two members are comprised of 3 routers each. Assuming member ASs are fully meshed and use full mesh iBGP, what is the required number of BGP sessions within the confederation?

A. 12

B. 13

C. 14

D. 15

Correct Answer: D

QUESTION 11

Assuming that "client1" and "client2" are directly-connected networks, what is the result of executing the following BGP export policy?



```
entry 10
  from
    protocol direct
  exit
  action accept
    community add "North"
  exit
exit
entry 20
  from
    prefix-list "client1"
  exit
  action accept
    community add "West"
  exit
exit
entry 30
  from
    prefix-list "client2"
  exit
  action accept
    community add "East"
  exit
exit
default-action reject
```

- A. Only entry 10 is executed for "client1" and "client2".
- B. Entries 10 and 20 are executed for "client1", and entries 10 and 30 are executed for "client2".
- C. Entries 10 and 20 are executed for "client1", and entries 10, 20 and 30 are executed for "client2".
- D. Entry 10 is executed for directly-connected routes, entry 20 for "client1" and entry 30 for "client2".

Correct Answer: A

QUESTION 12

Which of the following statements regarding route reflectors is TRUE?

- A. Route reflectors propagate BGP learned routes to their clients.
- B. Route reflectors require "n" iBGP sessions, where "n" is the number of BGP routers in the AS.
- C. Route reflectors disable iBGP split horizon for all iBGP peers in the AS.



D. Route reflectors do not work in conjunction with confederations.

Correct Answer: A

QUESTION 13

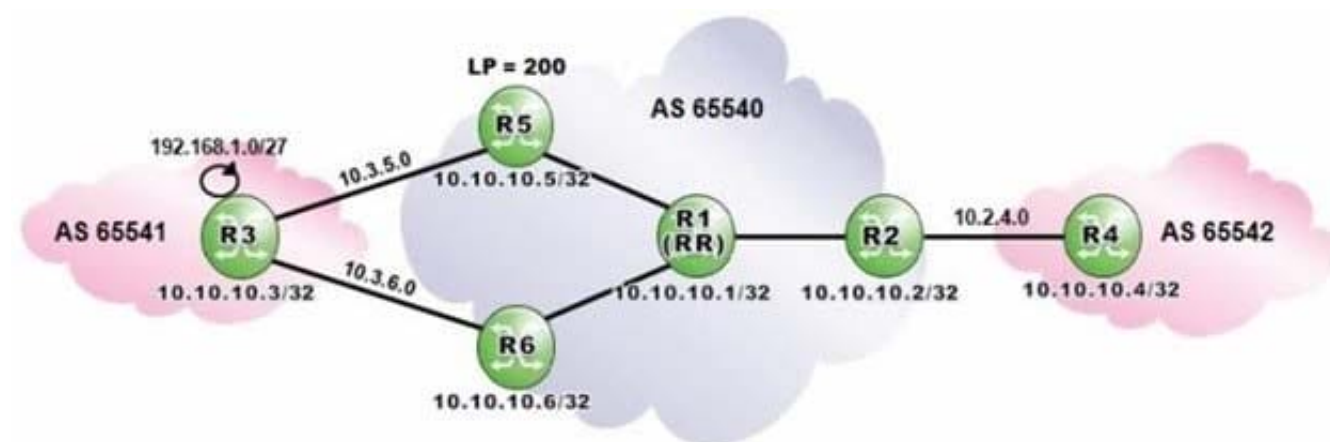
Based on the default settings for the Alcatel-Lucent 7750 SR, when a policy change is made and committed, what action is required by the user for the change to take effect?

- A. Execute a command to re-evaluate all routes in the Local-RIB against the configured export policies.
- B. Execute a command to re-evaluate all routes in the RIB-In against the configured import policies.
- C. Execute a command to reset the BGP session with the affected peer or peers.
- D. No further action is required.

Correct Answer: D

QUESTION 14

Click the exhibit.



Router R1 is a route reflector with clients R2, R5 and R6. Prefixes advertised by router R5 have a local preference of 200. Router R3 advertises the prefix 192.168.1.0/27 to routers R5 and R6.

Assuming that none of the routers in AS 65540 is configured with "advertise-external", what is the expected output of "show router bgp routes" on router R5?

- A. Option A
- B. Option B
- C. Option C
- D. Option D

Correct Answer: C



QUESTION 15

An Alcatel-Lucent 7750 SR receives a route from an eBGP peer without a MED. What MED value is sent to iBGP peers?

- A. 100
- B. 250
- C. The IGP cost
- D. None

Correct Answer: D

[4A0-102 VCE Dumps](#)

[4A0-102 Practice Test](#)

[4A0-102 Exam Questions](#)