



4A0-101^{Q&As}

Alcatel-Lucent Interior Routing Protocols and High Availability

Pass Alcatel-Lucent 4A0-101 Exam with 100% Guarantee

Free Download Real Questions & Answers **PDF** and **VCE** file from:

<https://www.pass4itsure.com/4a0-101.html>

100% Passing Guarantee
100% Money Back Assurance

Following Questions and Answers are all new published by Alcatel-Lucent Official Exam Center

- ⚙️ **Instant Download** After Purchase
- ⚙️ **100% Money Back** Guarantee
- ⚙️ **365 Days** Free Update
- ⚙️ **800,000+** Satisfied Customers





QUESTION 1

If the OSPF reference bandwidth is set to 1000 Gbps. what is the cost of a 1 Gbps interface?

- A. 1
- B. 10
- C. 100
- D. 1000

Correct Answer: D

QUESTION 2

In IS-IS, which of the following regarding an L1/L2 router is FALSE?

- A. An L1/L2 router can have adjacencies with routers in different areas.
- B. An L1/L2 router calculates separate SPF trees for the Level 1 and Level 2 topology.
- C. An L1/L2 router advertises its L2 routes to other L1 routers in the same area.
- D. An L1/L2 router sets the ATT bit in L1 LSPs to indicate that it has routes to other areas.

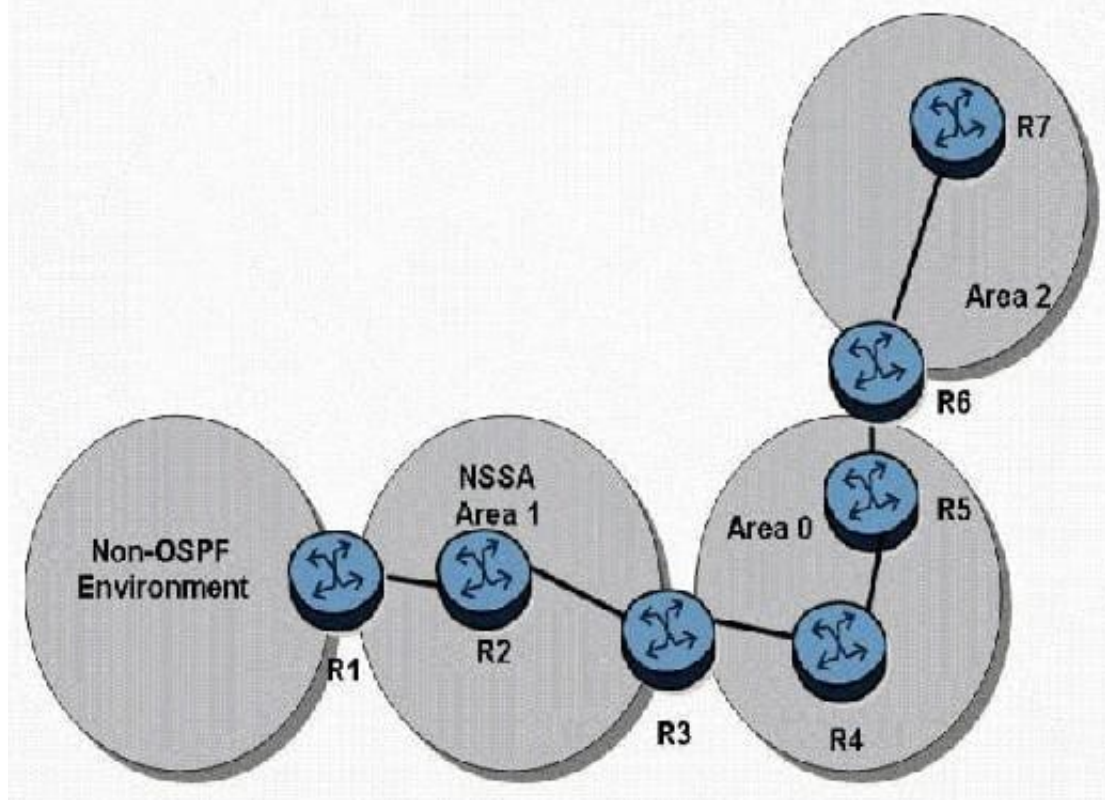
Correct Answer: C

QUESTION 3

Click the exhibit button.



Exhibit 4.5.j



In the topology shown, router R1 is an ASBR configured to export external routes to OSPF. Which of the following statements regarding the OSPF LSAs in the network is true?

- A. Router R1 generates a type 5 LSA that is flooded through all OSPF areas.
- B. Router R1 generates a type 7 LSA that is flooded through all OSPF areas.
- C. Router R1 generates a type 5 LSA that is flooded through area 1. Router R2 generates a type 7 LSA that is flooded through areas 0 and 2.
- D. Router R1 generates a type 7 LSA that is flooded through area 1. Router R3 generates a type 5 LSA that is flooded through areas 0 and 2.

Correct Answer: D

QUESTION 4

What must be configured on the Alcatel-Lucent 7750 SR for RIP to advertise locally attached links?

- A. A policy statement within the router identifying what is to be advertised
- B. Access-lists denoting what is to be advertised



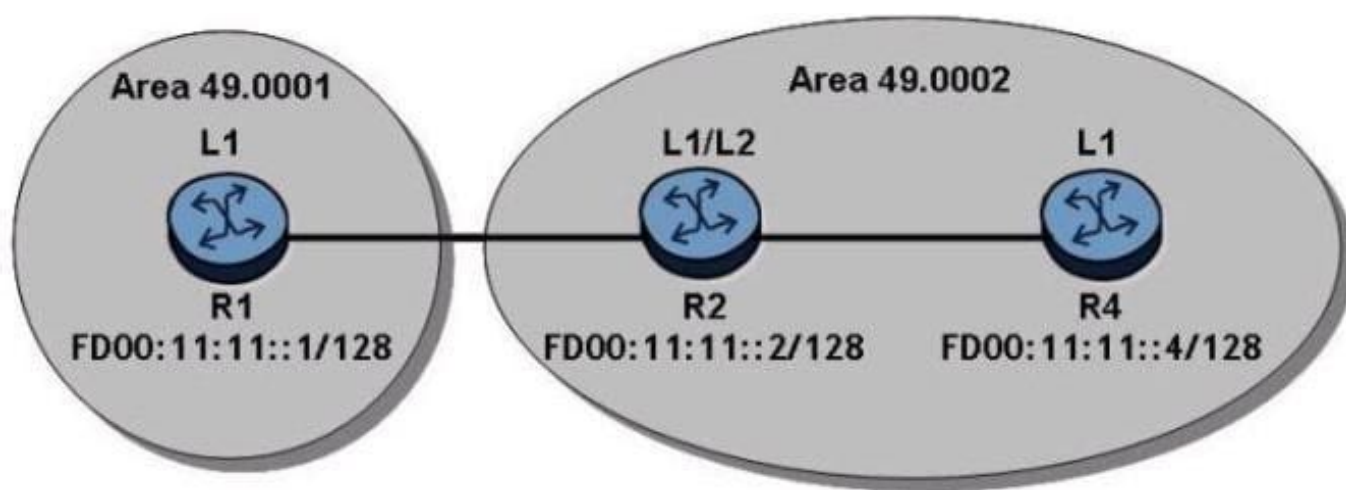
C. Default metrics for each link

D. A group and neighbor statement for each peer

Correct Answer: A

QUESTION 5

Refer to the exhibit below. IS-IS IPv6 routing is configured in the network with globally routed addresses as shown. How many routes will R4 have in its IPv6 route table?



A. 1

B. 2

C. 3

D. 4

E. 6

F. 7

Correct Answer: B

QUESTION 6

An OSPF router receives an update in which the sequence number, age, and checksum are the same as the entry already in the topological database. What action does the router take?

A. The link-state information is not populated in the database, but is forwarded to all neighbors.

B. The link-state information already in the database is overwritten and the age is reset.

C. The link-state information is not populated in the database and an acknowledgement is sent.



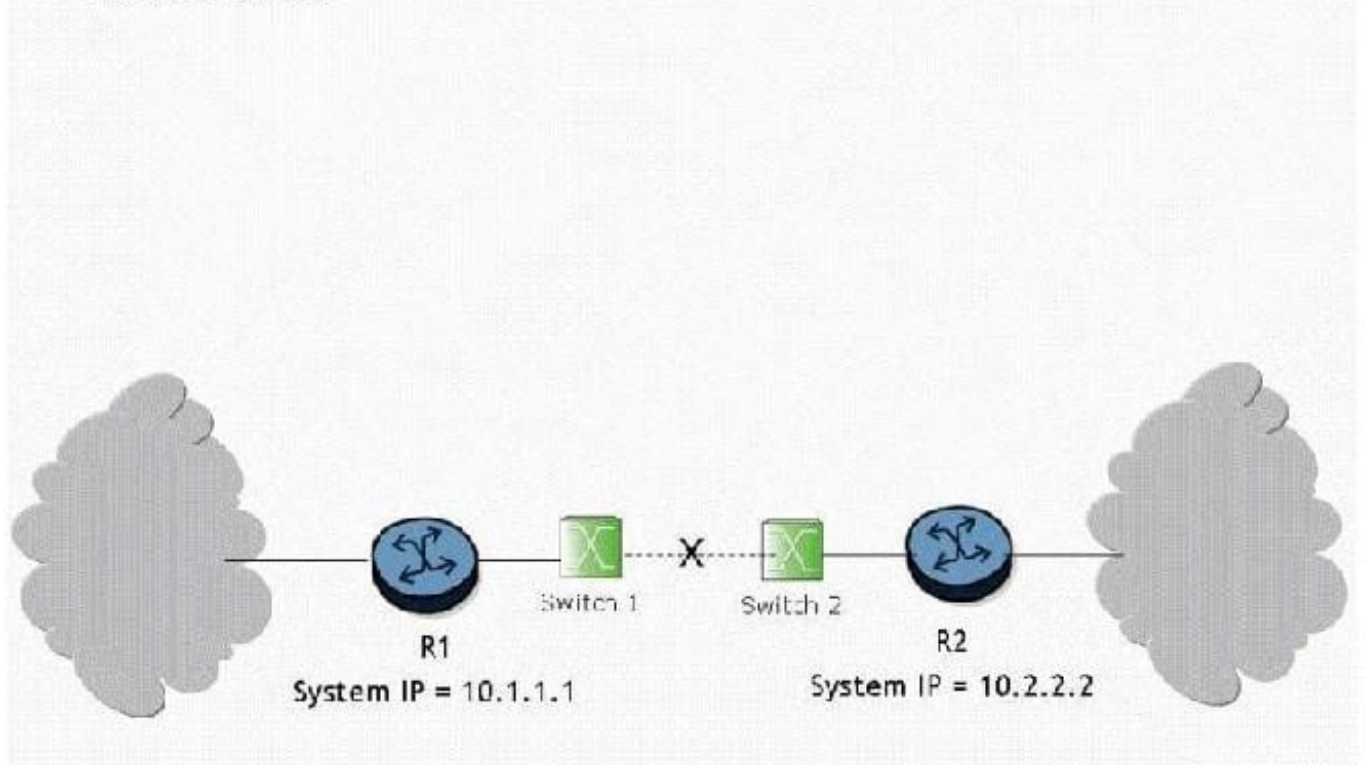
- D. The link-state information is regarded as old and nothing is done.
- E. A link-state request is performed to increase the sequence number.

Correct Answer: C

QUESTION 7

Click the exhibit button.

Exhibit 3.1.d



What triggers convergence of the routing protocol when the link between switch 1 and switch 2 goes down?

- A. Convergence is triggered when the adjacency between routers R1 and R2 drops as a result of Hello timeouts. At this point, both routers R1 and R2 re-compute their link state database and send updates to their adjacent routers. Once the process is complete for all routers, the networks have converged.
- B. Convergence is triggered when the physical interfaces between routers R1 and R2 go down. At this point, both routers R1 and R2 re-compute their link state database and send updates to their adjacent routers. Once the process is complete for all routers, the networks have converged.
- C. Convergence will not be triggered because switches cannot run routing protocols between them.
- D. Convergence is triggered when the switches notify the routers about the link state information. At this point, both routers R1 and R2 re-compute their link state database and send updates to their adjacent routers. Once the process is complete for all routers, the networks have converged.
- E. Convergence is triggered when an LSA is sent from router R1 to router R2 to indicate that the link is down. At this point, both routers R1 and R2 re-compute their link state database and send updates to their adjacent routers. Once the

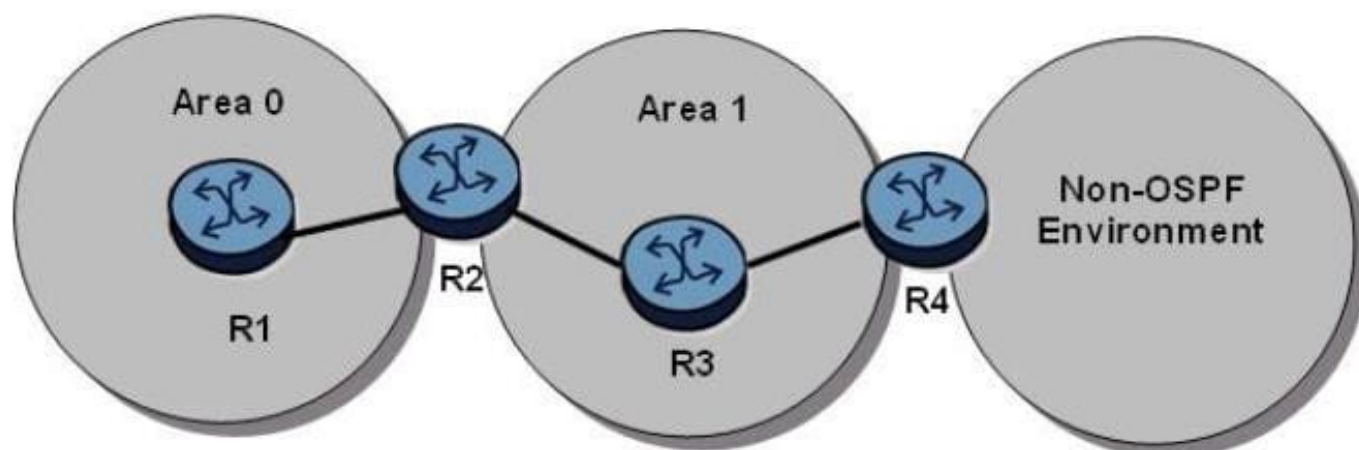


process is complete for all routers, the networks have converged.

Correct Answer: A

QUESTION 8

Click on the exhibit.



Router R4 is being added to the network and it is connected to a non-OSPF domain. Which area type should be used for Area 1 to allow the external routes to be advertised into Area 0?

- A. Backbone
- B. NSSA
- C. Stub
- D. Totally stubby

Correct Answer: B

QUESTION 9

Which part of the NSAP address is used to indicate to the end system that a packet is to be processed by the router itself?

- A. AFI
- B. IDI
- C. HO-DSP
- D. NSEL

Correct Answer: D



QUESTION 10

Select the answer below that correctly lists the 5 different OSPF packet types.

- A. Hello, Link State Update, Link State Packet, Link State Acknowledgement, Database Descriptor
- B. Link State Update, Link State Refresh, Link State Acknowledgement, Database Descriptor, Notification
- C. Hello, Link State Refresh, Link State Update, Link State Acknowledgement, Link State Authentication
- D. Hello, Link State Update, Link State Request, Link State Acknowledgement, Database Descriptor

Correct Answer: D

QUESTION 11

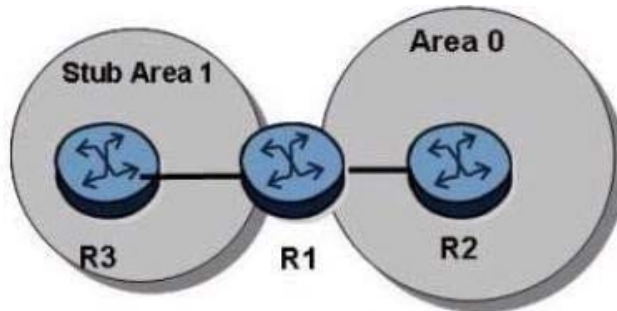
Which of the LSA types stay within an OSPF area and are not exported outside of the area? (Choose all that apply)

- A. Router LSA
- B. Network LSA
- C. Summary Network LSA
- D. Summary Router LSA

Correct Answer: AB

QUESTION 12

Click on the exhibit.



```
*A:R3>config>router>ospf# info
-----
area 0.0.0.1
  stub
  exit
  interface "toR1"
    interface-type point-to-point
  exit
exit
-----
*A:R3>config>router>ospf#
*A:R3>config>router>ospf# ping 192.168.3.1 count 1
PING 192.168.3.1 56 data bytes
Request timed out. icmp_seq=1.

---- 192.168.3.1 PING Statistics ----
1 packet transmitted, 0 packets received, 100% packet loss
*A:R3>config>router>ospf#
```

```
*A:R1>config>router>ospf# info
-----
area 0.0.0.0
  interface "toR2"
    interface-type point-to-point
  exit
exit
area 0.0.0.1
  stub
  exit
  interface "system"
  exit
  interface "toR3"
    interface-type point-to-point
  exit
exit
-----
*A:R1>config>router>ospf#
```

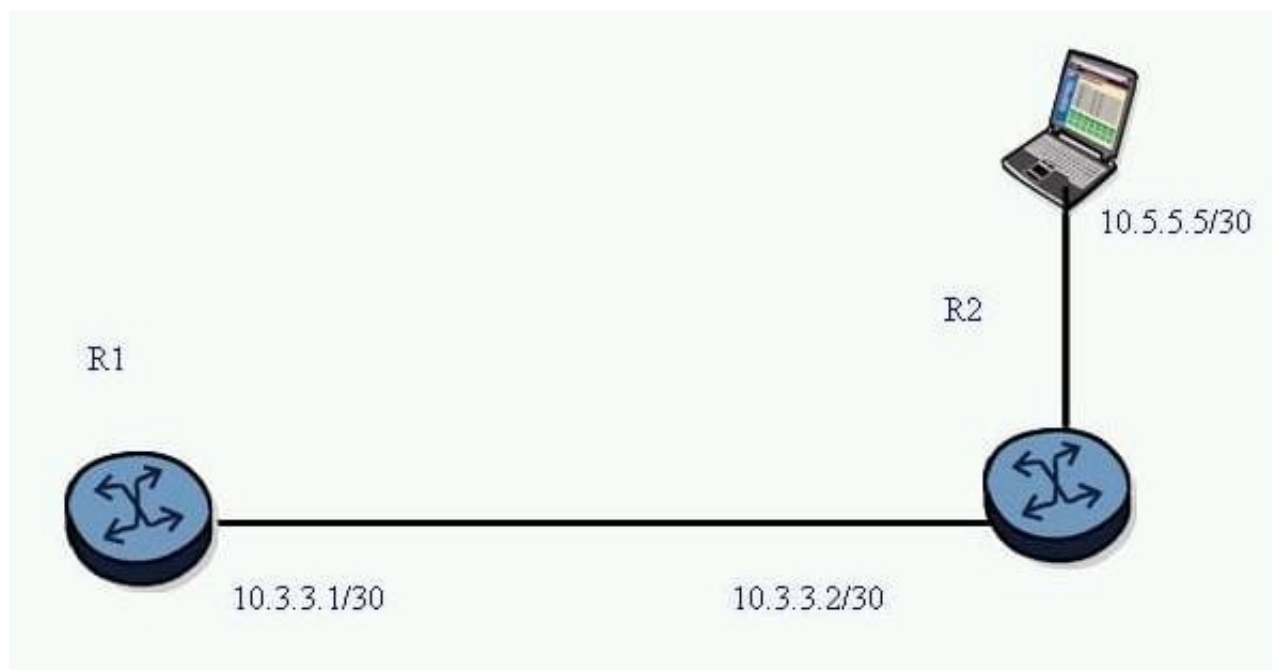
192.168.3.1 is a loopback interface on router R2 and is distributed to OSPF area 0, but the ping fails from router R3. Which of the following is a possible solution to the problem?

- A. Add "stub no summaries" to the area 1 configuration on router R1.
- B. Add the "originate-default-route" option in the area 1 configuration on router R1.
- C. Add a default static route on router R3.
- D. Include the system interface in the area 1 configuration on router R3.
- E. Add a static route on router R3 to 192.168.3.1.

Correct Answer: D

QUESTION 13

Click the exhibit button.



A static route is created on router R1 using the command "static-route 0.0.0.0/0 next-hop 10.3.3.2". What command can be used to test the static route on an Alcatel-Lucent 7750 SR?

- A. ping static 10.5.5.5
- B. ping static 0.0.0.0/0
- C. ping 10.5.5.5
- D. ping 0.0.0.0

Correct Answer: C

QUESTION 14

When IS-IS is electing a DIS, what is used as the tie breaker on an Alcatel-Lucent 7750 SR, if the priorities are the same?

- A. The system ID
- B. The loopback address
- C. The sequence number of the Hello packet
- D. The device that first initiated communication becomes the DIS
- E. The highest interface MAC address

Correct Answer: E

QUESTION 15



What is the term used for the updates sent by IS-IS?

- A. Link State PDUs
- B. Link State Updates
- C. Link State Advertisements
- D. Intermediate System Update Packets

Correct Answer: A

[Latest 4A0-101 Dumps](#)

[4A0-101 VCE Dumps](#)

[4A0-101 Study Guide](#)