



4A0-100^{Q&As}

Alcatel-Lucent Scalable IP Networks

Pass Alcatel-Lucent 4A0-100 Exam with 100% Guarantee

Free Download Real Questions & Answers **PDF** and **VCE** file from:

<https://www.pass4itsure.com/4a0-100.html>

100% Passing Guarantee
100% Money Back Assurance

Following Questions and Answers are all new published by Alcatel-Lucent Official Exam Center

- ⚙️ **Instant Download** After Purchase
- ⚙️ **100% Money Back** Guarantee
- ⚙️ **365 Days** Free Update
- ⚙️ **800,000+** Satisfied Customers





QUESTION 1

What is NOT a function of the IOM?

- A. It forwards the data to the switch fabric.
- B. It discards excess data packets.
- C. It converts the incoming data to an internal format.
- D. It performs Quality of Service operations and buffers incoming data.

Correct Answer: C

QUESTION 2

Which of the following is a characteristic of a subnet created with a prefix length of /32?

- A. The subnet has only one address reserved for a loopback interface or the system interface.
- B. The subnet has a broadcast address.
- C. The subnet is configured for a point-to point link.
- D. The subnet is reserved for a multicast address groups.

Correct Answer: A

QUESTION 3

What information is used to separate VLANs on a VLAN trunk that connects multiple VLANs?

- A. The VLAN tag
- B. The IP Header
- C. The VID
- D. The Priority Value

Correct Answer: A

QUESTION 4

Which of the following best describes an Ethernet bridge?

- A. A passive device simply used to connect two or more cables. Does not generate or amplify any signals.
- B. A device that receives and retransmits a signal out its other ports, but does not do any Layer 2 analysis of the data.



C. A device that receives a signal and based on the Layer 2 destination address, makes a decision on which ports the signal should be retransmitted.

D. A device that receives a signal and based on the Layer 3 destination address, makes a decision on which ports the signal should be retransmitted.

Correct Answer: C

QUESTION 5

When entering a command on the Nokia 7750 SR from the Command Line Interface (CLI), what would you use to list all the options for the command?

A. ?

B. tab character

C. space character

D. info

Correct Answer: A

QUESTION 6

What type of MAC address is ff:ff:ff:ff:ff:ff?

A. Unicast

B. Multicast

C. Broadcast

D. Anycast

Correct Answer: C

QUESTION 7

Which of the following does a link-state protocol use when choosing the best path to a destination network?

A. Cost

B. Round-trip time

C. Hop-count

D. Route preference

Correct Answer: A

**QUESTION 8**

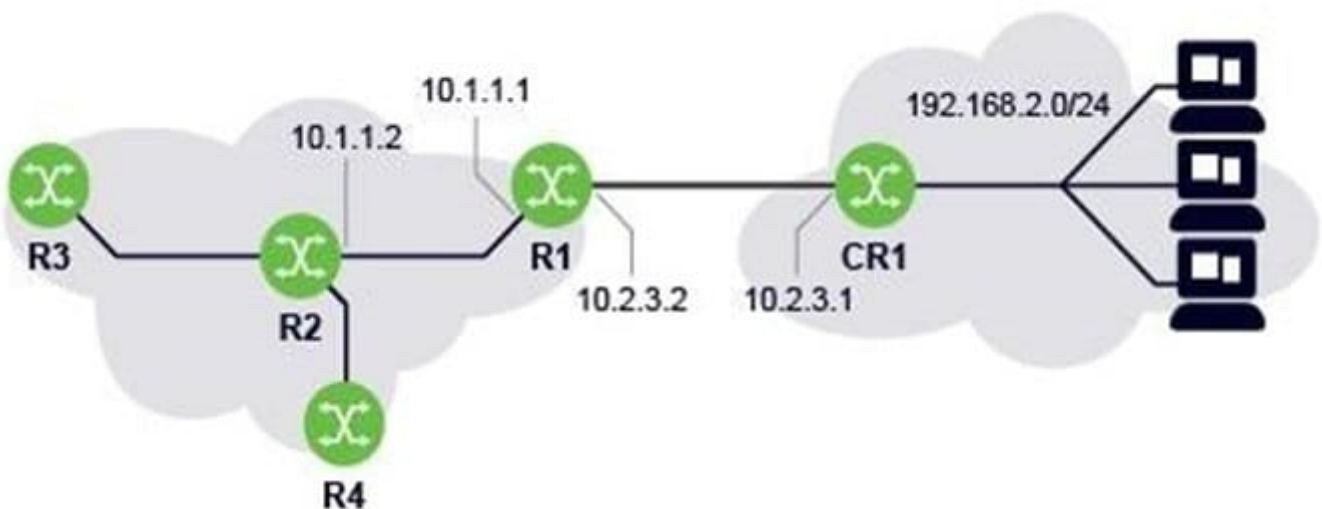
Which statement best describes an SDP?

- A. Service Delivery Points are defined on the service provider network side and used to bind the service to an MPLS transport tunnel. Many services can be bound to a single SDP.
- B. Service Delivery Points are defined on the service provider access side and used to bind the connection of the service to CE device. Many services can be bound to a single SDP.
- C. Service Delivery Points are defined on the service provider network side and used to bind the service to an MPLS transport tunnel. Only one service can be bound to a single SDP.
- D. Service Delivery Points are defined on the service provider access side and used to bind the service to CE device. Only one service can be bound to a single SDP.

Correct Answer: A

QUESTION 9

What next-hop should be used on CR1 to configure a default route to router R1?



- A. 10.2.3.2
- B. 10.2.3.1
- C. 192.168.2.0
- D. 10.1.1.1

Correct Answer: A



QUESTION 10

Hosts in the same IP network share which common address feature?

- A. Same host numbers.
- B. Same IP address.
- C. First two bits of the IP address are set to 01.
- D. Same network prefix.

Correct Answer: D

QUESTION 11

When forwarding a packet, which field in the following table determines the egress interface?

- A. Preference
- B. Metric
- C. Next-hop
- D. Cost

Correct Answer: C

QUESTION 12

What is the sequence of events for a client to receive an IP address from the server in the DHCP?

- A. Discover, offer, request, acknowledgement.
- B. Request, offer, discover, acknowledgement.
- C. Discover, request, offer, acknowledgement.
- D. Request, acknowledgement, discover, offer.

Correct Answer: A

QUESTION 13

Which of the following are important to consider when designing IPv4 subnets? (Choose 3)

- A. The number of subnetworks currently required.
- B. The version of the Ethernet used by each segment.
- C. Future network growth requirements.



- D. The number of hosts each subnetwork will support.
- E. The class of the IP address assigned to an organization.

Correct Answer: ACD

QUESTION 14

Which of the following is an important advantage of protocol layering? (Choose two) A. Controls distribution of IP addresses.

- B. Simplifies protocol functionality.
- C. Isolates changes in lower layers from upper layers.
- D. Increases protocol operational efficiencies.
- E. Layering adds to the fragmentation of the data

Correct Answer: CD

QUESTION 15

Which Ethernet frame field allows the transmitter and receiver to synchronize communications?

- A. Preamble
- B. Start Frame Delimiter
- C. Length/Type
- D. Frame Check Sequence

Correct Answer: A

[4A0-100 PDF Dumps](#)

[4A0-100 Study Guide](#)

[4A0-100 Braindumps](#)