



4A0-102^{Q&As}

Alcatel-Lucent Border Gateway Protocol

Pass Alcatel-Lucent 4A0-102 Exam with 100% Guarantee

Free Download Real Questions & Answers **PDF** and **VCE** file from:

<https://www.pass4itsure.com/4a0-102.html>

100% Passing Guarantee
100% Money Back Assurance

Following Questions and Answers are all new published by Alcatel-Lucent Official Exam Center

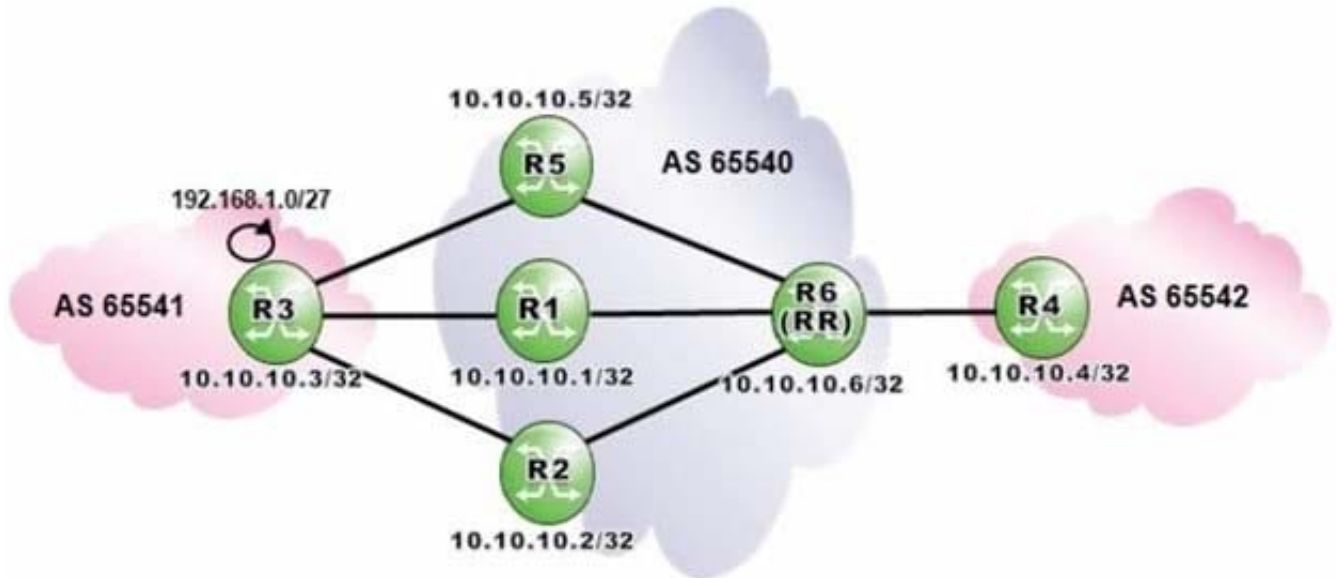
-  **Instant Download** After Purchase
-  **100% Money Back** Guarantee
-  **365 Days** Free Update
-  **800,000+** Satisfied Customers





QUESTION 1

Click the exhibit.



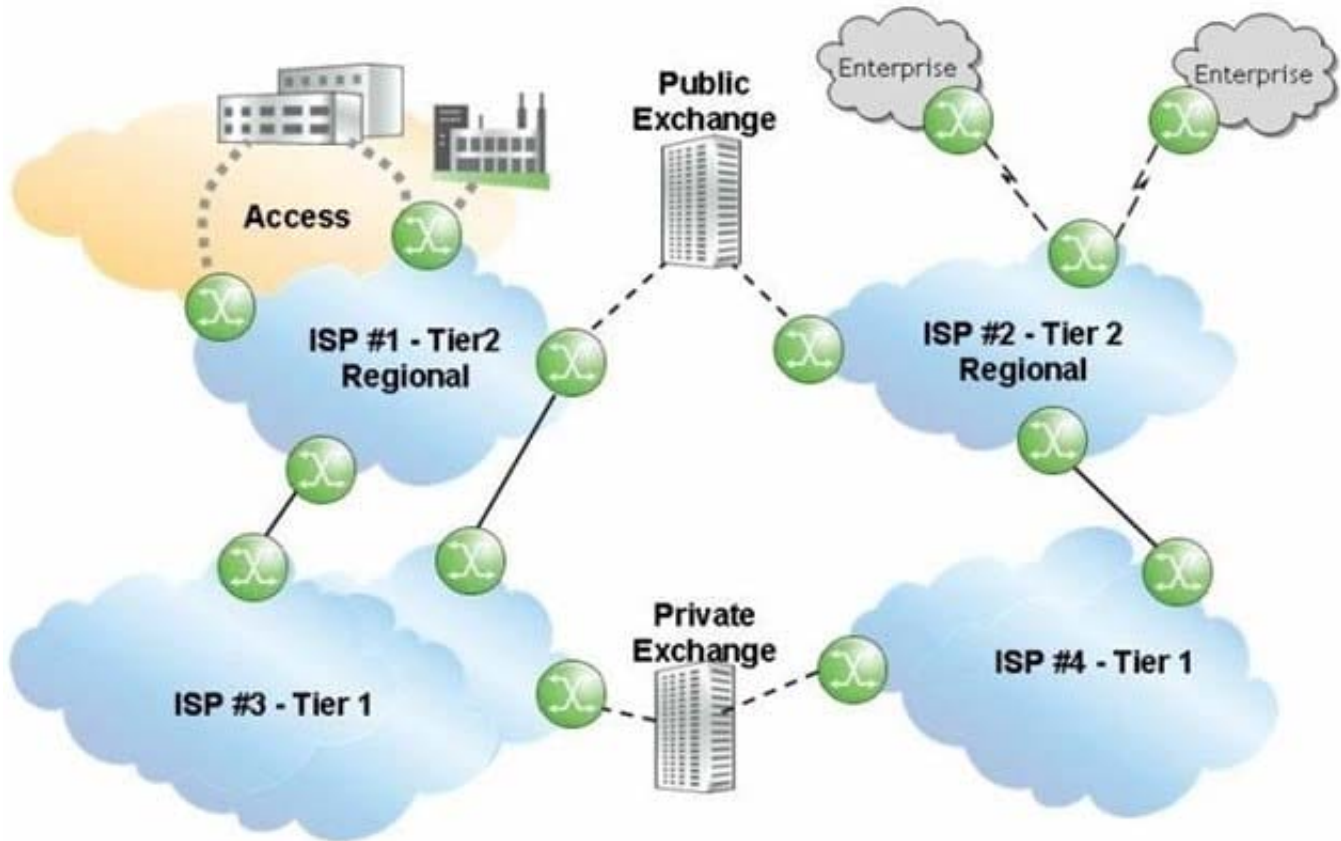
Router R6 is a route reflector with clients R1, R2 and R5. Router R3 advertises the prefix 192.168.1.0/27 to routers R1, R2 and R5. How many routes for prefix 192.168.1.0/27 will router R6 receive?

- A. 1
- B. 2
- C. 3
- D. None

Correct Answer: C

QUESTION 2

Click the exhibit.



Which of the following about the relationship between ISP 1 and ISP 3 is TRUE?

- A. ISP 1 is downstream from ISP 3 and is expected to push more traffic toward ISP 3 than it pulls from it.
- B. ISP 3 is downstream from ISP 1 and is expected to push more traffic toward ISP 1 than it pulls from it.
- C. ISP 1 is downstream from ISP 3 and is expected to pull more traffic from ISP 3 than it pushes toward it.
- D. ISP 3 is downstream from ISP1 and is expected to pull more traffic from ISP 1 than it pushes toward it.

Correct Answer: C

QUESTION 3

Which of the following is NOT a goal of BGP routing policies?

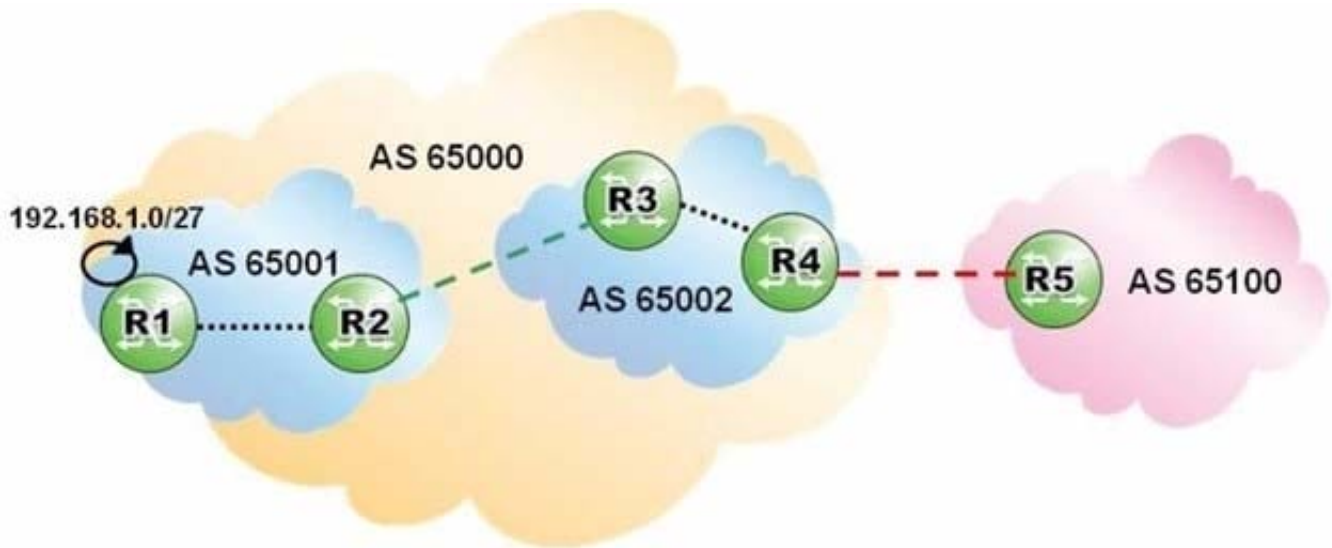
- A. To protect external networks from instability.
- B. To communicate the architecture of an AS to external ASs.
- C. To protect the local AS and other external ASs from bad NLRI.
- D. To optimize ingress and egress traffic patterns to best serve the users of the AS.

Correct Answer: B



QUESTION 4

Click the exhibit.



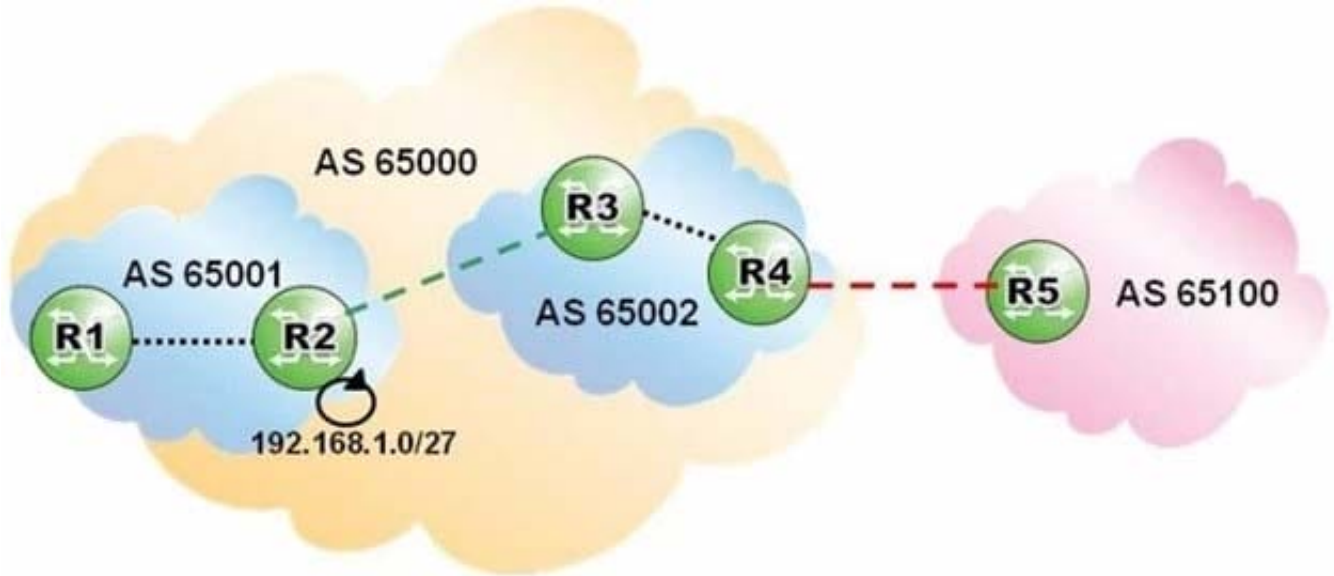
Router R1 is advertising prefix 192.168.1.0/27 with community "no-export". Which routers will receive an update for that prefix?

- A. Router R2 only.
- B. Routers R2 and R3 only.
- C. Routers R2, R3 and R4 only.
- D. Routers R2, R3, R4 and R5.

Correct Answer: D

QUESTION 5

Click the exhibit.



Router R2 is advertising prefix 192.168.1.0/27 with community "no-advertise" towards AS 65002. Which routers receive an update for that prefix?

- A. Router R3 only.
- B. Routers R3 and R4 only.
- C. Routers R3, R4 and R5 only.
- D. Router R2 does not advertise an update for the prefix.

Correct Answer: A

QUESTION 6

Why is a full mesh of iBGP peers required?

- A. To ensure proper route propagation inside a transit AS.
- B. To ensure that all routers are directly connected.
- C. To ensure that all routers run iBGP inside a transit AS.
- D. To maximize control plane scalability.

Correct Answer: A

QUESTION 7

Which of the following regarding BGP authentication on the Alcatel-Lucent 7750 SR is FALSE?

- A. Authentication is performed before establishing the BGP session.



- B. Authentication can only be configured on the group or neighbor level.
- C. By default, MD5 authentication is disabled.
- D. Peer authentication may be optionally requested in an open message.

Correct Answer: B

QUESTION 8

Upon the successful establishment of a TCP session between peers, what type of BGP message is exchanged?

- A. OpenSent
- B. Keepalive
- C. Open
- D. Notification
- E. Update

Correct Answer: C

QUESTION 9

Which of the following organizations would an ISP based in Europe approach for an IP prefix assignment?

- A. ARIN
- B. ICANN
- C. RIPE NCC
- D. LACNIC
- E. APNIC

Correct Answer: C

QUESTION 10

Which regular expression will match the AS Path of a route originating in remote AS 65100?

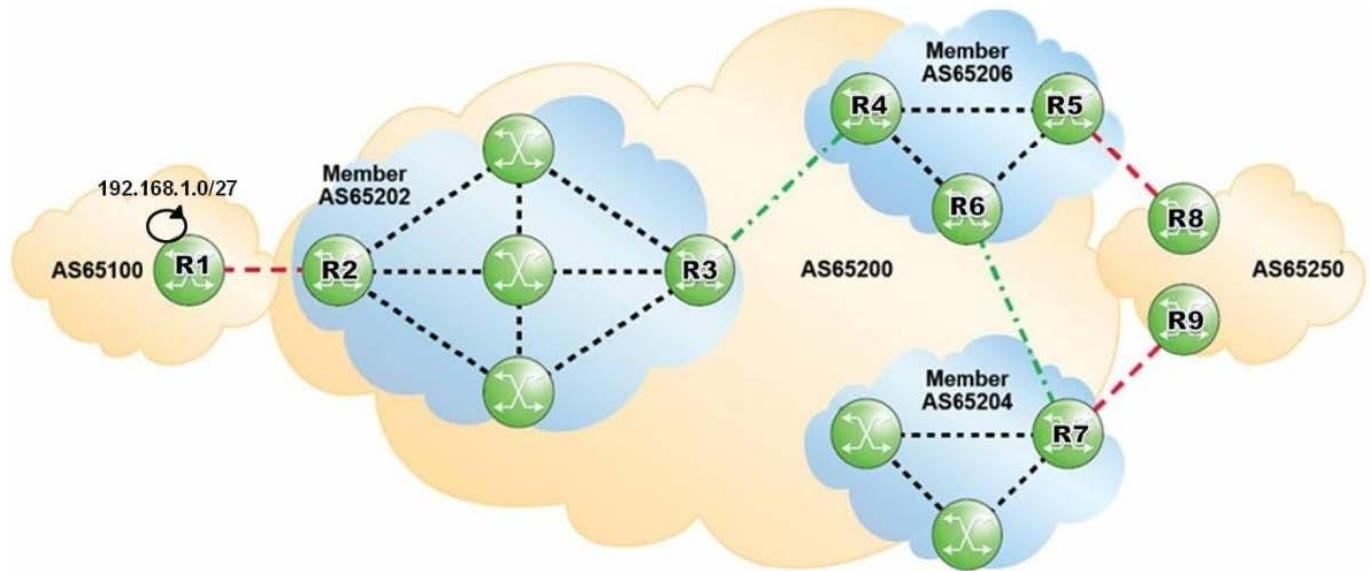
- A. ".+ 65100"
- B. "65100.+"
- C. ". * 65100.*"
- D. "65100"



Correct Answer: A

QUESTION 11

Click the exhibit.



Which of the following statements best describes the BGP sessions within the given network?

- A. The session between AS 65202 and AS 65206 is an iBGP session.
- B. The session between AS 65204 and AS 65206 is an intra-confederation eBGP session.
- C. A BGP session is required between AS 65202 and AS 65204.
- D. The BGP sessions within the member ASes are known as inter-confederation BGP sessions.

Correct Answer: B

QUESTION 12

Which of the following is NOT a BGP message type?

- A. Route-Refresh
- B. OpenSent
- C. Notification
- D. Update
- E. Keepalive

Correct Answer: B



QUESTION 13

Which of the following regarding BGP confederations is FALSE?

- A. A confederation is a collection of Autonomous Systems advertised as a single AS number to BGP speakers outside the confederation.
- B. Each member AS must either maintain a full mesh of iBGP sessions, or use route reflection.
- C. Confederations can be used to subdivide ASs that have a large number of BGP speakers into smaller domains.
- D. A full mesh of intra-confederation eBGP sessions is required between the member ASs.

Correct Answer: D

QUESTION 14

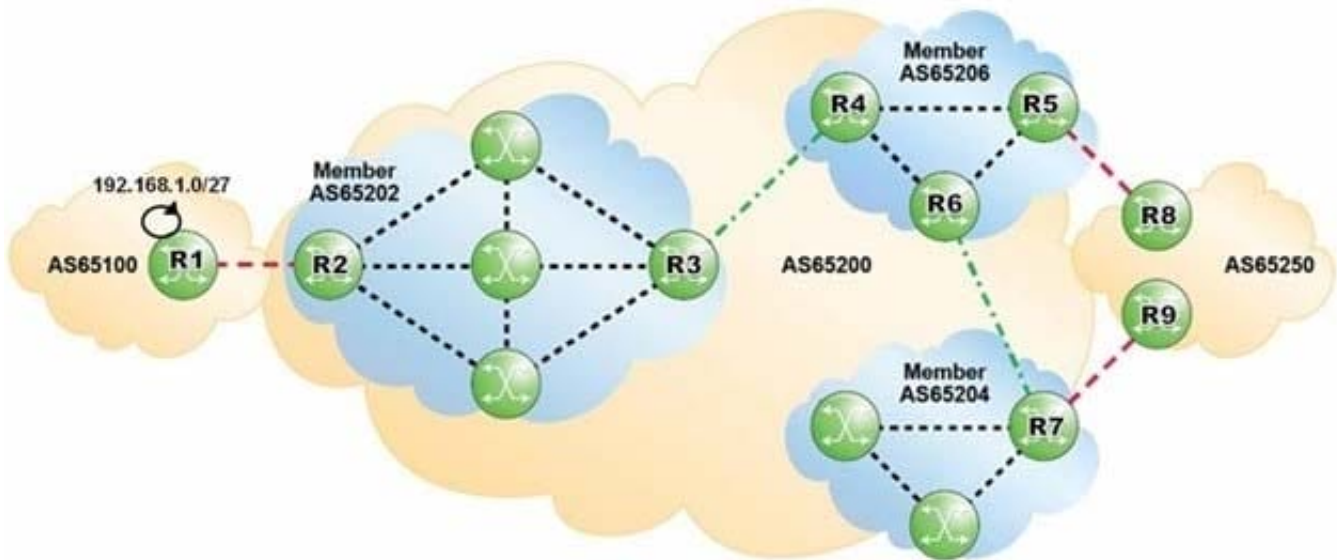
Which of the following routes is NOT considered an internal route?

- A. A route received from a BGP peer within the same AS.
- B. A route originated by a router in a different cluster of the same AS.
- C. A route received from a BGP peer from a different member AS of a confederation.
- D. A route received from a BGP peer from the same member AS of a confederation.

Correct Answer: C

QUESTION 15

Click the exhibit.



AS 65100 is advertising 192.168.1.0/27 into BGP. Which of the following AS Paths would the prefix 192.168.1.0/27 contain when viewed on router R7?

- A. 65206 65202 65100
- B. (65206 65202)65100
- C. (65204 65206 65202) 65100
- D. (65200) 65100

Correct Answer: B

[4A0-102 VCE Dumps](#)

[4A0-102 Practice Test](#)

[4A0-102 Study Guide](#)