



352-011^{Q&As}

Cisco Certified Design Expert Practical

Pass Cisco 352-011 Exam with 100% Guarantee

Free Download Real Questions & Answers **PDF** and **VCE** file from:

<https://www.pass4itsure.com/352-011.html>

100% Passing Guarantee
100% Money Back Assurance

Following Questions and Answers are all new published by Cisco
Official Exam Center

-  **Instant Download** After Purchase
-  **100% Money Back** Guarantee
-  **365 Days** Free Update
-  **800,000+** Satisfied Customers



**QUESTION 1**

Your client is considering acquiring a new IPv6 address block so that all Ethernet interfaces on the network receive addresses based on their burned-in hardware addresses, with support for 600 VLANs. Which action do you recommend?

- A. Acquire a new /60 IPv6 network and subnet it into /70 networks, one per VLAN
- B. Acquire a new /58 IPv6 network and subnet it into /64 networks, one per VLAN
- C. Acquire a new /60 IPv6 network and subnet it into /68 networks, one per VLAN
- D. Acquire a new /54 IPv6 network and subnet it into /64 networks, one per VLAN

Correct Answer: D

QUESTION 2

A financial trading organization plans to monitor the network latency for multicast data feeds on a hop-by-hop basis. Which technology should be added to their design to support this requirement?

- A. SPAN
- B. NBAR
- C. IPFIX
- D. Precision Time Protocol

Correct Answer: D

QUESTION 3

Which two options are reasons for designing a large OSPF network with multiple areas connected to the backbone? (Choose two)

- A. Reduce the number of routes within an area
- B. Route tagging capability
- C. Simplify logical topology
- D. Enhance failure detection
- E. Reduce SPF algorithm runs

Correct Answer: AE

QUESTION 4



Which three network management requirements are common practices in network design? (Choose three)

- A. Ensure that all network devices have their clocks synchronized.
- B. Collect SNMP poll information for future regression analysis.
- C. Capture both ingress and egress flow-based packets, while avoiding duplication of flows.
- D. Look at average counters instead of instantaneous counters for inconsistent and bursty KPIs, such as CPU utilization and interface utilization.
- E. Validate data plane health, and application and services availability, with synthetic traffic.

Correct Answer: ABD

QUESTION 5

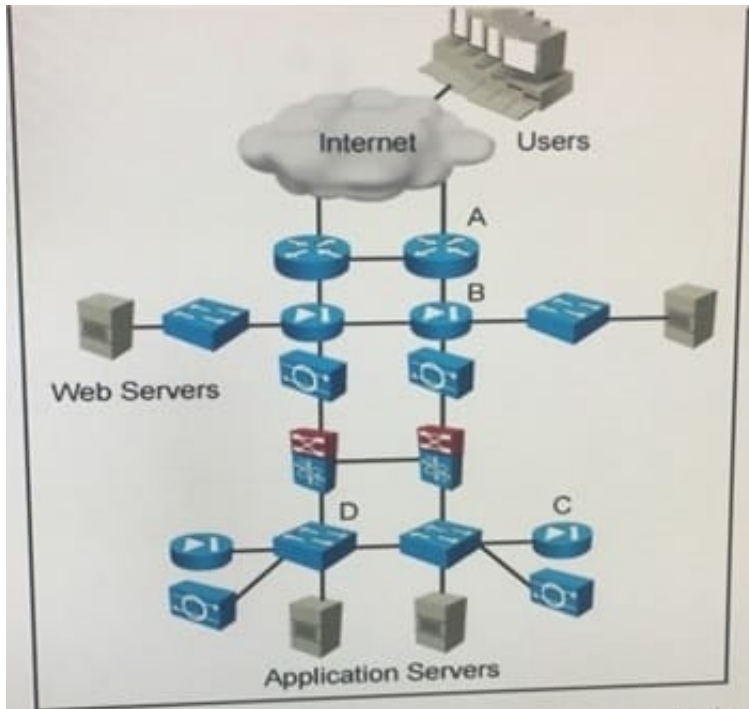
You are implementing a one-to-many multicast solution for a large service provider network. Which technology offers optimal routing of multicast traffic?

- A. PIM sparse mode
- B. PIM SSM
- C. Anycast RP
- D. MSDP
- E. Bidirectional PIM.

Correct Answer: B

QUESTION 6

Refer to the exhibit.



The operations team has identified that some of the multi-tiered e-commerce application have slow performance, due to illegitimate inbound traffic form the internet. On which device do you place traffic filtering to improve performance?

- A. Option A
- B. Option B
- C. Option C
- D. Option D

Correct Answer: D

QUESTION 7

A network is designed to use OSPF to reach eBGP peers. For eBGP peers to stay stable in case of a link failure, what condition should be avoided?

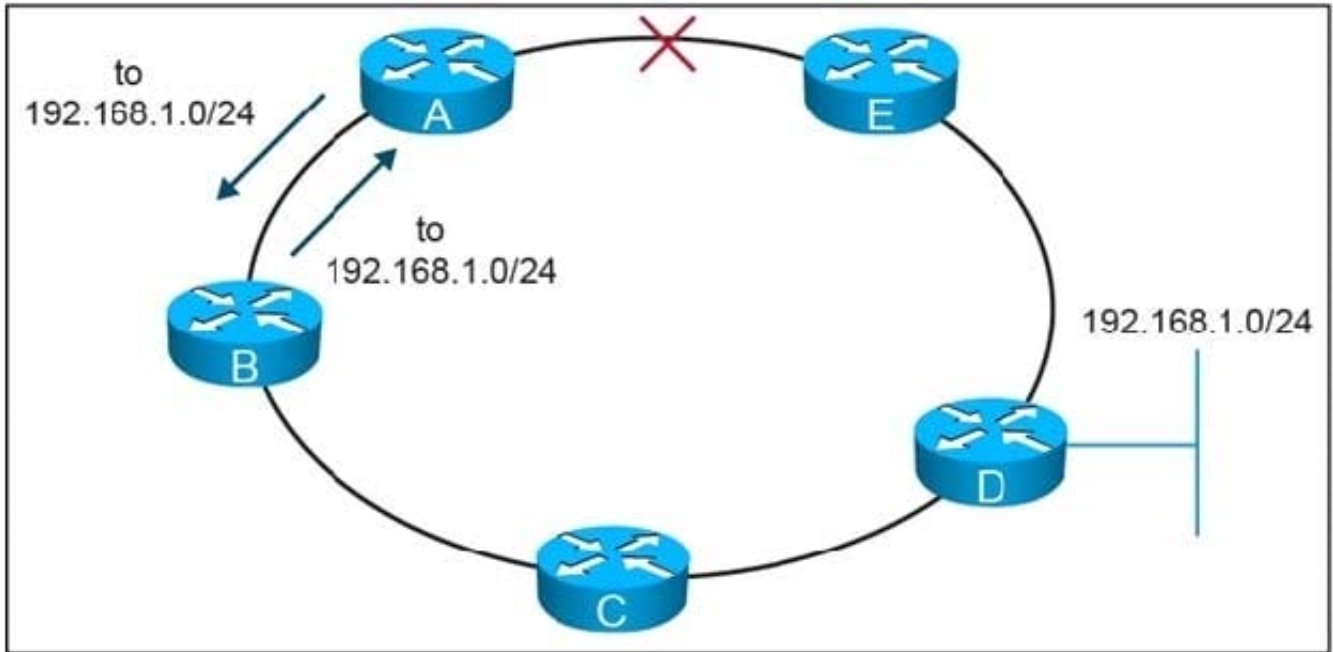
- A. Advertise IP addresses used on eBGP statements via a normal OSPF area
- B. Use an ACL to block BGP in one direction
- C. Disable BGP synchronization
- D. Advertise IP addresses used on eBGP peer statements via eBGP

Correct Answer: D

QUESTION 8



Refer to the exhibit.



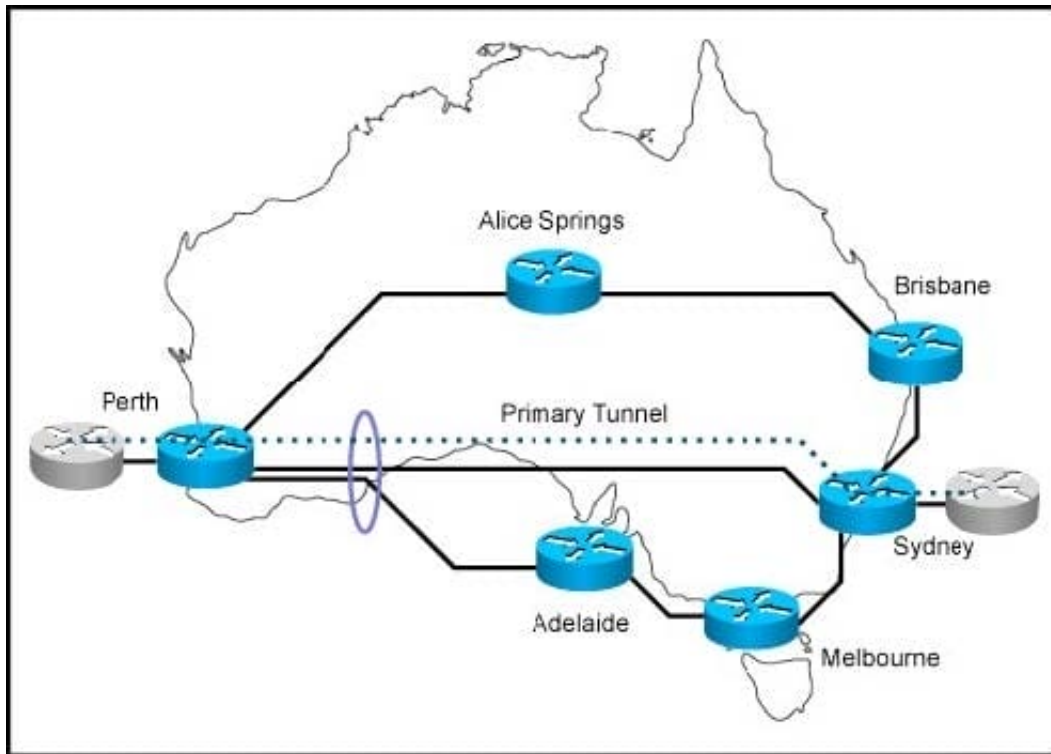
On this MPLS-based network ring, links have failed between router A and router E. These failures formed microloops while the network converged, when A forwarded traffic to B but B forwards it back to A. Which technology is the simplest solution to avoid microloops without enabling a new protocol in the network?

- A. TE Fast ReRoute
- B. IP Fast ReRoute
- C. Loop-Free Alternate
- D. Remote Loop-Free Alternate

Correct Answer: D

QUESTION 9

Refer to the exhibit.



You are designing MPLS-TE for this network. The links from Perth to Sydney and from Perth to Adelaide share the same optical fiber in one given segment. Which feature should you implement to eliminate the risk that a backup tunnel is installed over the same optical fiber as the primary one?

- A. Shared Risk Link Groups
- B. MPLS-TE Path Protection
- C. MPLS-TE auto-tunnel backup
- D. MPLS-TE Link protection

Correct Answer: A

QUESTION 10

Which markup language is used to format Ansible's playbook?

- A. ADML
- B. YAML
- C. HTML
- D. XML
- E. NAML

Correct Answer: B

**QUESTION 11**

In an OSPF network, users in a particular OSPF non-backbone area are complaining about slow access speeds to a shared corporate resource in another OSPF area. Traceroutes show that the users are taking a suboptimal default route to the destinations. Which solution will improve access speed?

- A. Make the area totally stubby so that the default can be followed along the best path
- B. Create a virtual link between the areas so that traffic can shortcut directly between them
- C. Leak specific summaries on the ABRs for the remote subnets in addition to the default
- D. Implement policy routing to channel the traffic in the optimal direction

Correct Answer: C

QUESTION 12

Which two statements about VXLAN are true? (Choose two)

- A. VXLAN is a Cisco proprietary solution
- B. VXLAN is an encapsulation method used to create a Layer 3 overlay network
- C. VXLAN can be used to enforce Layer 2 isolation in a multitenant infrastructure
- D. VXLAN uses the Spanning Tree protocol for loop prevention
- E. VXLAN overcomes the 802.1Q virtual LAN address space limitation

Correct Answer: BE

QUESTION 13

Which two impacts of adding the IP events dampening feature to a network design are true? (Choose two.)

- A. It switches traffic immediately after a link failure.
- B. It reduces the utilization of system processing resources.
- C. It speeds up link failure detection.
- D. It protects against routing loops.
- E. It improves overall network stability.

Correct Answer: BE

QUESTION 14



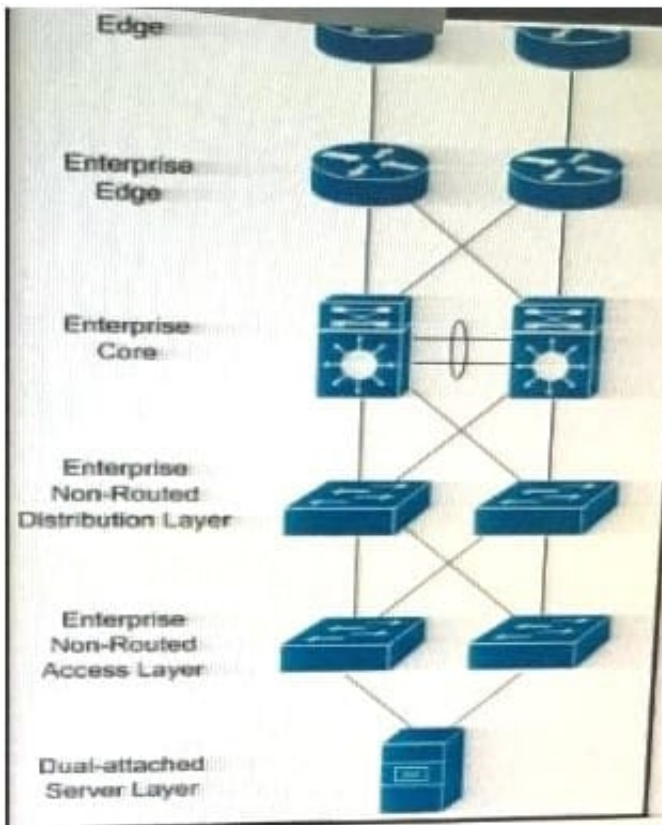
Which main IoT migration aspect should be reviewed for a manufacturing plant?

- A. Sensors
- B. Security
- C. Applications
- D. Wi-Fi Infrastructure
- E. Ethernet Switches

Correct Answer: A

QUESTION 15

Refer to the Exhibit.



In which three Layers should you use nonstop Forwarding to reduce service impact in case of failure? (Choose three)

- A. Enterprise Edge
- B. Enterprise Core
- C. Service provider Edge
- D. Dual-attached sever Layer



E. Enterprise Non-Routed Access Layer

F. Enterprise Non-Routed Distribution Layer.

Correct Answer: ABC

[Latest 352-011 Dumps](#)

[352-011 Practice Test](#)

[352-011 Braindumps](#)