



352-001^{Q&As}

CCDE Written Exam

Pass Cisco 352-001 Exam with 100% Guarantee

Free Download Real Questions & Answers **PDF** and **VCE** file from:

<https://www.pass4itsure.com/352-001.html>

100% Passing Guarantee
100% Money Back Assurance

Following Questions and Answers are all new published by Cisco
Official Exam Center

- ⚙ **Instant Download** After Purchase
- ⚙ **100% Money Back** Guarantee
- ⚙ **365 Days** Free Update
- ⚙ **800,000+** Satisfied Customers



**QUESTION 1**

In an MPLS-based network, there is a link that constantly flaps. This flapping makes the network constantly reconverge and causes it to become unstable. Which two technologies can be deployed to resolve the design failure? (Choose two.)

- A. IP Event Dampening
- B. BFD
- C. Carrier Delay
- D. IP Routing Protocol Route Purge

Correct Answer: AC

QUESTION 2

Which two Layer 2 features should be applied to the network location identified by a circle? (Choose two)

- A. UDLC
- B. PortFast
- C. PortFast trunk
- D. BPDU filter
- E. loop guard
- F. BPDU guard

Correct Answer: BF

QUESTION 3

When designing a network that consists of multiple IPv6 multicast servers on a Layer 2 VLAN, which option should you consider regarding IPv6 multicast traffic forwarding?

- A. The RP IP address is embedded in IPv6 multicast address.
- B. IPv6 multicast addresses are assigned based on network prefix.
- C. IPv6 multicast addresses are assigned by IANA.
- D. IPv6 multicast flooding optimization requires Layer 2 switches support of MLD snooping.

Correct Answer: D

**QUESTION 4**

Which of these can you use to effectively and dynamically reduce IP address spoofing?

- A. Egress Packet Filtering
- B. Ingress Packet Filtering
- C. Egress Route Filtering
- D. route dampening
- E. unicast Reverse Path Forwarding

Correct Answer: E

QUESTION 5

In a rented office, workers are not assigned to specific cubes. The facility just began to use IEEE 802.1X authentication for the tenants. When workers have previously logged in to a PC, it works correctly, but when they move to another PC that has never been used before, they are unable to log in. Which redesign action will overcome this issue with minimal operational burden?

- A. Use machine authentication.
- B. Establish a "Bring Your Own Device" portal.
- C. Disable and re-enable network authentication when a new worker logs in to a new machine.
- D. Enable MAC Authentication Bypass.

Correct Answer: A

QUESTION 6

When designing a WAN that will be carrying real-time traffic, what are two important reasons to consider serialization delay? (Choose two.)

- A. Serialization delays are variable because they depend on the line rate of the interface and on the type of the packet being serialized.
- B. Serialization delay depends not only on the line rate of the interface but also on the size of the packet.
- C. Serialization delays are invariable because they depend only on the line rate of the interface.
- D. Serialization delays are variable because they depend only on the size of the packet being serialized.
- E. Serialization delay is the time required to transmit the packet on the physical media.

Correct Answer: BE

**QUESTION 7**

You are the lead IP network designer for a new service provider called XYZ, and you are working closely with the CTO to finalize design requirements. The CTO informs you that they want to transport IPv6 prefixes of customers through the XYZ network at this time; however, they need your advice on whether to deploy dual stack or MPLS 6PE/6VPE.

Which two options do you recommend? (Choose two.)

- A. Build a dual-stack network. Enable BGP in the core. Redistribute EBGP routes into IGP.
- B. Use MPLS 6PE to simplify the operation and keep a BGP-free core. When the LDPv6 becomes available, change to 4PE or keep the core using both IPv4 and IPv6. The main goal is to keep the core BGP-free and ensure that IPv4, IPv6, VPNv4, and VPNv6 are all Guaranteed success with TestInsides practice guides 100 label-switched.
- C. Use MPLS 6VPE to simplify the operation and keep a BGP-free core. When the LDPv6 becomes available, change to 4PE or keep the core using both IPv4 and IPv6. The main goal is to keep the core BGP-free and ensure that IPv4, IPv6, VPNv4, and VPNv6 are all label-switched.
- D. Prepare the dual-stack infrastructure from the beginning, even if BGP prefixes would have to be announced via IPv4 in case you decide to maintain the BGP-free core.

Correct Answer: BD

QUESTION 8

A client has approached you about deploying very fast IS-IS hello timers across an intercontinental high speed SONET link.

What should you recommend?

- A. Fast hello timers are a good choice for this link because on long haul SONET links the reporting of LINE and PATH errors can take a long time.
- B. Fast hello timers are not a good choice for this link because the link is physically long and the propagation delay may cause IS-IS to believe the link has failed when it has not.
- C. Fast hello timers are a good choice for this link because the length of the link indicates there will be at least one SONET amplifier that disables PATH alarms on the circuit.
- D. Fast hello timers are not a good choice for this link because SONET links provide link- down notification much faster than IS-IS could detect a circuit failure by means of hello processing.

Correct Answer: D

QUESTION 9

A large enterprise customer has more than 300 worldwide locations, each with at least two different WAN connections



to their five regional data centers across US, Europe, and Asia. These data centers offer different application services and work as primary, with a remote data center as backup. You must provide a solution to securely select the traffic path for specific applications based on an IT policy.

Which solution allows the easiest management of the path decision from the data center sites?

- A. Apply policy-based routing at each remote site
- B. Use LISP over the current WAN
- C. Set up each center with its own AS and use BGP AS-PATH prepend configuration
- D. Add Cisco MPLS TE devices in the data centers and activate Cisco MPLS TE

Correct Answer: B

QUESTION 10

You are designing a GET VPN solution for an existing branch network. The existing network has the following characteristics: 50 remote sites (with an additional 30 remote sites expected over the next 3 years), Connectivity between all sites is via MPLS Layer 3 VPN service from a single provider, OSPF is the routing protocol used between provider edge and customer edge routers, The customer edge routers will become group members performing the encryption between sites.

Which additional routing protocol, if any, should you use for the overlay routing between the group members?

- A. EIGRP
- B. OSPF (with a different process ID)
- C. eBGP
- D. RIPv2
- E. No additional protocol is necessary

Correct Answer: E

QUESTION 11

What is the best practice for tuning routing protocol hello and dead timers when deploying IGP non-stop forwarding (NSF)?

- A. The hello and dead timers should be tuned to allow NSF to continue forwarding after an initial failure detection.
- B. NSF-independent timers should be used so that routing protocol timers have no effect.
- C. The hello and dead timers should be tuned so the link failure is detected before NSF has the chance to react to the failure.
- D. The routing protocol hello and dead timers should be decreased to the minimum.



Correct Answer: A

QUESTION 12

Which multicast technology provides a large, many-to-many connectivity for a new application while minimizing load on the existing network infrastructure?

- A. Bidirectional PIM
- B. PIM Sparse Mode
- C. Any-source Multicast
- D. Source Specific Multicast

Correct Answer: A

QUESTION 13

An network is designed to use OSPF to reach eBGP peers.

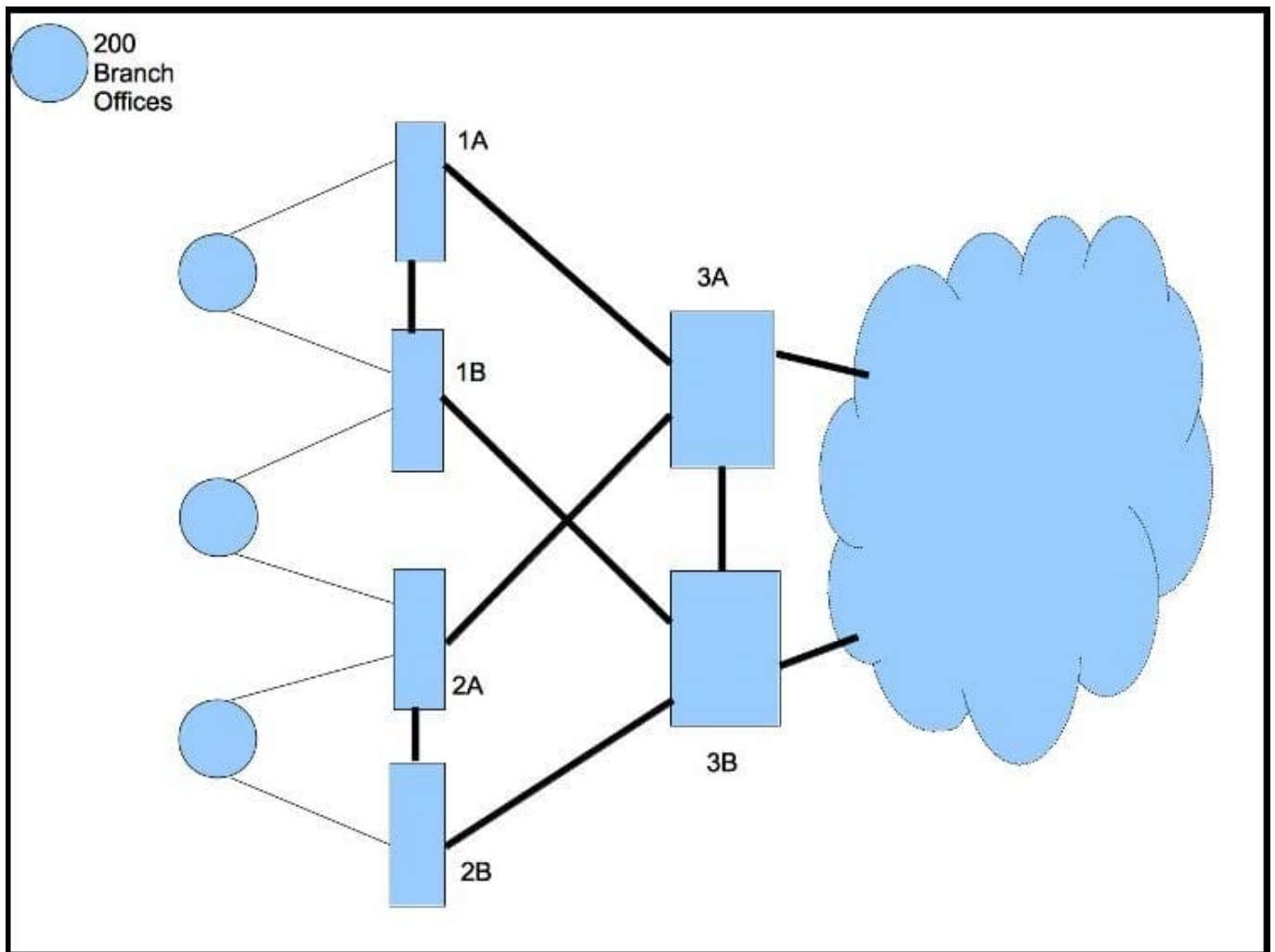
Which condition should be avoided in the design to potentially prevent the eBGP peers do not flap continuously in case of link failure?

- A. Disable BGP synchronization.
- B. Advertise IP addresses used on eBGP peer statement via a non-backbone OSPF area.
- C. Advertise via eBGP IP addresses used on eBGP peer statements.
- D. Use an ACL to block BGP in one direction.

Correct Answer: C

QUESTION 14

Refer to the exhibit.



In this network design, where should summarization occur to provide the best summarization and optimal paths during a single-failure incident as well as during normal operation?

- A. a single identical summary for all the branch offices placed on routers 1A, 1B, 2A, and 2B
- B. two summaries on 1A and 1B, and two summaries on 2A and 2B
- C. a single identical summary on 3A and 3B
- D. a single summary on each aggregation device for the branches connected to them

Correct Answer: C

QUESTION 15

What is an advantage of placing the IS-IS flooding domain boundary at the core Layer in a three-layer hierarchical network?

- A. The L1 and L2 domains can easily overlap



- B. The L2 domain is contained and more stable
- C. It can be applied to any kind of topology
- D. It reduces the complexity of the L1 domains

Correct Answer: A

[352-001 Practice Test](#)

[352-001 Exam Questions](#)

[352-001 Braindumps](#)