



351-001^{Q&As}

CCIE Routing and Switching Written

Pass Cisco 351-001 Exam with 100% Guarantee

Free Download Real Questions & Answers **PDF** and **VCE** file from:

<https://www.pass4itsure.com/351-001.html>

100% Passing Guarantee
100% Money Back Assurance

Following Questions and Answers are all new published by Cisco
Official Exam Center

-  **Instant Download** After Purchase
-  **100% Money Back** Guarantee
-  **365 Days** Free Update
-  **800,000+** Satisfied Customers





QUESTION 1

Which two modes of operation does BFD support? (Choose two.)

- A. synchronous mode
- B. asynchronous mode
- C. demand mode
- D. echo mode
- E. aggressive mode
- F. passive mode

Correct Answer: BC

A session may operate in one of two modes: asynchronous mode and demand mode. In asynchronous mode, both endpoints periodically send Hello packets to each other. If a number of those packets are not received, the session is considered down. In demand mode, no Hello packets are exchanged after the session is established; it is assumed that the endpoints have another way to verify connectivity to each other, perhaps on the underlying physical layer. However, either host may still send Hello packets if needed.

Reference: http://en.wikipedia.org/wiki/Bidirectional_Forwarding_Detection

QUESTION 2

Which two statements about the MAC address table space are true? (Choose two.)

- A. You can disable learning on a VLAN to reduce table-space requirements.
- B. When you disable learning on a VLAN with an SVI, IP packet flooding in the Layer 2 domain is also disabled.
- C. Unicast, multicast, and broadcast MAC address filtering is configured globally and disabled by default.
- D. The default setting for static MAC addresses to age out of the MAC address table is 300 seconds.
- E. Turning off MAC learning on VLANs 900 through 1005 disables learning on VLANs 900 through 1001.

Correct Answer: AE

QUESTION 3

DRAG DROP

Drag and drop each BGP attribute on the left to the matching description on the right.

Select and Place:



Drag and drop each BGP attribute on the left to the matching description on the right.

AS_PATH	sets the value used to reach the advertising router
community	an attribute whose value can affect the preferred path for eBGP peers
LOCAL_PREF	an attribute whose value is shared within iBGP
MED	supports values of IGP, EGP, and INCOMPLETE
NEXT_HOP	a Cisco proprietary attribute that is local to the individual router
origin	allows the administrator to customize path selection by grouping routes
weight	a list that shows the path through which a route has passed

Correct Answer:

Drag and drop each BGP attribute on the left to the matching description on the right.

	NEXT_HOP
	MED
	LOCAL_PREF
	origin
	weight
	community
	AS_PATH

QUESTION 4

DRAG DROP

Drag each GETVPN component on the left to its function on the right.

Select and Place:



Group Domain of Interpretation Protocol	Authenticates group members.
Group Member	Serves as the crypto device.
Key Encryption Key	Secures data during transmission.
Key Server	Manages the group keys.
Traffic Encryption Key	Secures rekey messages.

Correct Answer:

	Key Server
	Group Member
	Traffic Encryption Key
	Group Domain of Interpretation Protocol
	Key Encryption Key

QUESTION 5

DRAG DROP

Drag and drop the IPv6 prefix on the left to the correct address type on the right.

Select and Place:



Drag and drop the IPv6 prefix on the left to the correct address type on the right.

FF00::/8	Unique Local Unicast
FEC0::/10	Global Unicast
2000::/3	Link Local Unicast
FE80::/10	Multicast
FC00::/7	
FE00::/9	

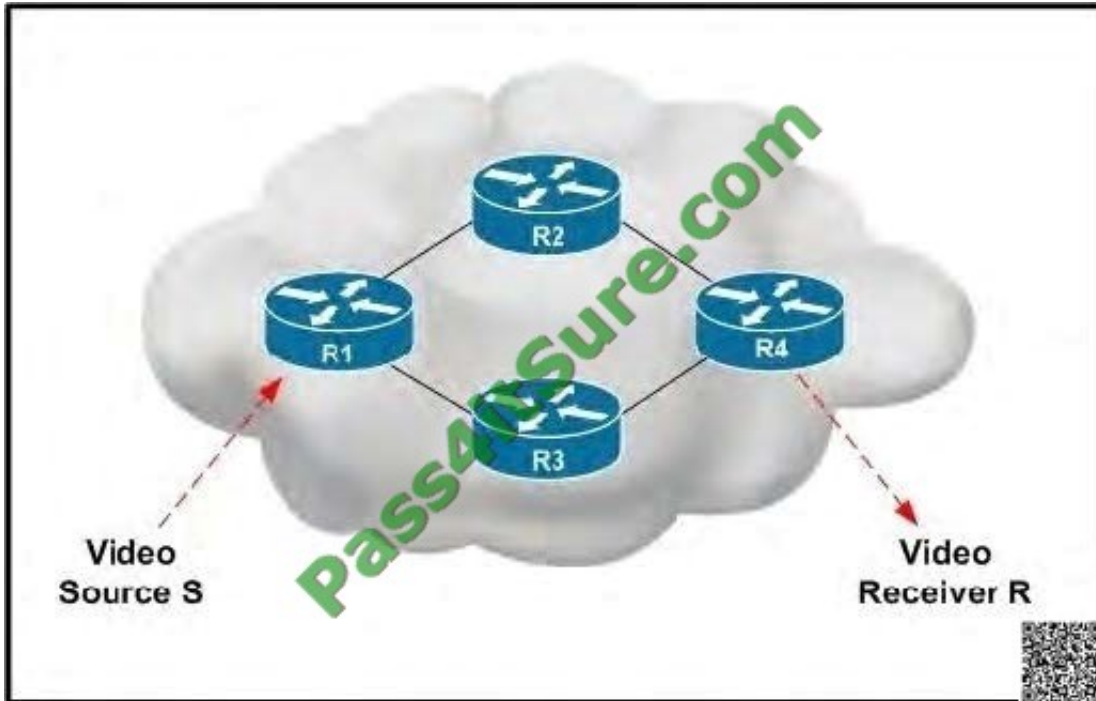
Correct Answer:

Drag and drop the IPv6 prefix on the left to the correct address type on the right.

	FC00::/7
FEC0::/10	2000::/3
	FE80::/10
	FF00::/8
FE00::/9	

QUESTION 6

Refer to the exhibit.



Video Source S is sending interactive video traffic to Video Receiver R. Router R1 has multiple routing table entries for destination R. Which load-balancing mechanism on R1 can cause out-of-order video traffic to be received by destination R?

- A. per-flow load balancing on R1 for destination R
- B. per-source-destination pair load balancing on R1 for destination R
- C. CEF load balancing on R1 for destination R
- D. per-packet load balancing on R1 for destination R

Correct Answer: D

Per-packet load balancing guarantees equal load across all links, however potentially the packets may arrive out-of-order at the destination as differential delay may exist within the network.

Reference:

http://www.cisco.com/en/US/products/hw/modules/ps2033/prod_technical_reference09186_a00800afeb7.html

QUESTION 7

DRAG DROP

Drag and drop the NHRP flag on the left to the corresponding meaning on the right.

Select and Place:



authoritative

The NHRP mapping entry was created from an NHRP registration request

implicit

NHRP information was obtained from the next hop server that maintains the NBMA-to-IP mapping

unique

NHRP information was learned from a forwarded NHRP packet

registered

The NHRP mapping entry is protected from being overwritten by a mapping address that has the same IP address and a different NBMA address.

Correct Answer:

registered

authoritative
that maintains the NBMA-to-IP mapping

implicit

unique
by a mapping address that has the same IP address and a different NBMA address.

QUESTION 8

You are installing a new device to replace a device that failed. The configuration of the failed device is stored on a networked server, and the new device has an RXBOOT image installed. Under which condition does the streamlined Setup mode fail?

- A. The last four bits of the configuration register are not equal to the decimal value 0 or 1.
- B. The startup configuration file was deleted.
- C. Bit 6 is set in the configuration register.
- D. The startup configuration is corrupt.

Correct Answer: A

The lowest four bits of the configuration register (bits 3, 2, 1, and 0) form the boot field. The boot field determines if the



router boots manually, from ROM, or from Flash or the network. To change the boot field value and leave all other bits set

to their default values, follow these guidelines:

If you set the configuration register boot field value to 0x0, you must boot the operating system manually with the boot command.

?

default ROM software.

?

If you set the configuration register boot field to any value from 0x2 to 0xF, the router uses the boot field value to form a default boot filename for booting from a network server. For more information about the configuration register bit settings

and default filenames, refer to the appropriate router hardware installation guide.

Reference:

[http://www.cisco.com/c/en/us/td/docs/ios/12_2/configfun/command/reference/ffun_r/frf010.](http://www.cisco.com/c/en/us/td/docs/ios/12_2/configfun/command/reference/ffun_r/frf010.html)

html

QUESTION 9

An IP SLA fails to generate statistics. How can you fix the problem?

- A. Add the verify-data command to the router configuration.
- B. Reload the router configuration.
- C. Remove the ip sla schedule statement from the router configuration and re-enter it.
- D. Add the debug ip sla error command to the router configuration.
- E. Add the debug ip sla trace command to the router configuration.

Correct Answer: A

QUESTION 10

When you enable the MPLS Multi-VRF feature, which two supported routing protocols can be used to exchange routing information between PE routers and CE routers? (Choose two.)

- A. BGP
- B. RIP
- C. OSPF



D. EIGRP

E. IS-IS

Correct Answer: AB

QUESTION 11

In which way does the Bridge Assurance mechanism modify the default spanning-tree behavior in an effort to prevent bridging loops?

- A. Received BPDUs are looped back toward the sender to ensure that the link is bidirectional.
- B. If BPDUs are no longer received on a port, the switch immediately sends out a TCN BPDU.
- C. Extended topology information is encoded into all BPDUs.
- D. BPDUs are sent bidirectional on all active network ports, including blocked and alternate ports.

Correct Answer: D

QUESTION 12

Which option is an incorrect design consideration when deploying OSPF areas?

- A. area 1 - area 0 - MPLS VPN backbone - area 0 - area 2
- B. area 1 - MPLS VPN backbone - area 2
- C. area 1 - MPLS VPN backbone - area 1
- D. area 2 - area 0 - MPLS VPN backbone - area 1
- E. area 0 - area 2 - MPLS VPN superbackbone - area 1

Correct Answer: E

In the case of MPLS-VPN Backbone as The OSPF superbackbone behaves exactly like Area 0 in regular OSPF, so we cannot have two different area 0's that are not directly connected to each other. When area 0 connects to the superbackbone, it simply becomes an extension of area 0.

[351-001 PDF Dumps](#)

[351-001 Study Guide](#)

[351-001 Braindumps](#)



To Read the [Whole Q&As](#), please purchase the [Complete Version](#) from [Our website](#).

Try our product !

100% Guaranteed Success

100% Money Back Guarantee

365 Days Free Update

Instant Download After Purchase

24x7 Customer Support

Average 99.9% Success Rate

More than 800,000 Satisfied Customers Worldwide

Multi-Platform capabilities - [Windows](#), [Mac](#), [Android](#), [iPhone](#), [iPod](#), [iPad](#), [Kindle](#)

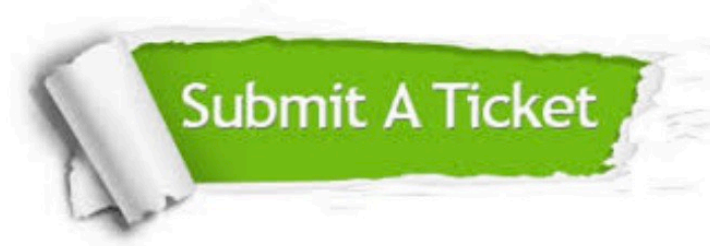
We provide exam PDF and VCE of Cisco, Microsoft, IBM, CompTIA, Oracle and other IT Certifications. You can view Vendor list of All Certification Exams offered:

<https://www.pass4itsure.com/allproducts>

Need Help

Please provide as much detail as possible so we can best assist you.

To update a previously submitted ticket:



 <p>One Year Free Update Free update is available within One Year after your purchase. After One Year, you will get 50% discounts for updating. And we are proud to boast a 24/7 efficient Customer Support system via Email.</p>	 <p>Money Back Guarantee To ensure that you are spending on quality products, we provide 100% money back guarantee for 30 days from the date of purchase.</p>	 <p>Security & Privacy We respect customer privacy. We use McAfee's security service to provide you with utmost security for your personal information & peace of mind.</p>
---	---	--

Any charges made through this site will appear as Global Simulators Limited.

All trademarks are the property of their respective owners.

Copyright © pass4itsure, All Rights Reserved.