



350-001^{Q&As}

CCIE Routing and Switching Written

Pass Cisco 350-001 Exam with 100% Guarantee

Free Download Real Questions & Answers **PDF** and **VCE** file from:

<https://www.pass4itsure.com/350-001.html>

100% Passing Guarantee
100% Money Back Assurance

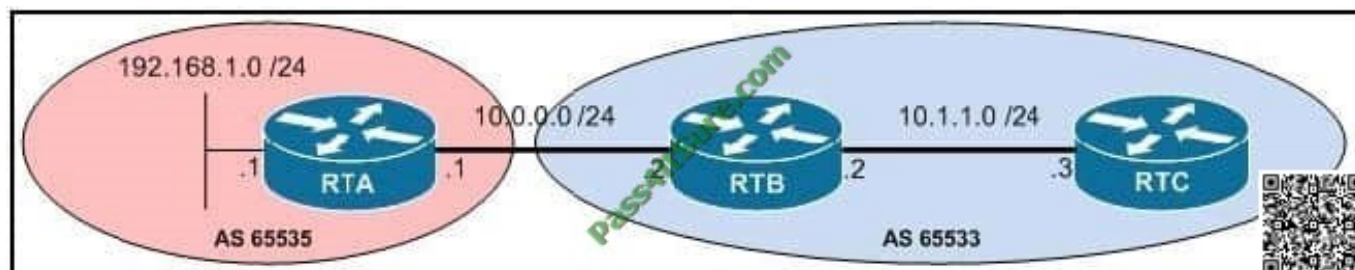
Following Questions and Answers are all new published by Cisco
Official Exam Center

- ⚙ **Instant Download** After Purchase
- ⚙ **100% Money Back** Guarantee
- ⚙ **365 Days** Free Update
- ⚙ **800,000+** Satisfied Customers



**QUESTION 1**

Refer to the exhibit. Considering that RTB does not use next-hop-self, what will be the next hop for the route 192.168.1.0/24 on RTC?



- A. 192.168.1.1
- B. 10.0.0.1
- C. 10.0.0.2
- D. 10.1.1.2
- E. 10.1.1.3
- F. the BGP router ID of RTA

Correct Answer: B

QUESTION 2

Refer to the exhibit. Routers A and B are directly connected and running EIGRP, but they are unable to form a neighbor relationship.

What is the most likely cause?

**Router A relevant configuration:**

```
interface fa0/0
```

```
ip address 10.10.10.1 255.255.255.252
```

```
ip address 10.10.10.9 255.255.255.252 secondary
```

```
ip address 10.10.10.5 255.255.255.252 secondary
```

```
router eigrp 100
```

```
network 10.10.10.0 0.0.0.255
```

Router B relevant configuration:

```
interface fa0/0
```

```
ip address 10.10.10.6 255.255.255.252
```

```
ip address 10.10.10.2 255.255.255.252 secondary
```

```
ip address 10.10.10.10 255.255.255.252 secondary
```

```
router eigrp 100
```

```
network 10.10.10.0 0.0.0.3
```

```
network 10.10.10.4 0.0.0.3
```

```
network 10.10.10.8 0.0.0.3
```



- A. The network statements are misconfigured.
- B. The IP address statements are misconfigured
- C. The autonomous system is misconfigured.
- D. There is a physical issue with the cable.

Correct Answer: B

QUESTION 3

Which two statements are true about LACP? (Choose two.)

- A. LACP packets are sent with multicast group MAC address 01-80-c2-00-00-02.
- B. The Type/Field value is 0x8808.
- C. During detection, LACP packets are transmitted every second.
- D. The timeout for a failed LACP channel is 30 seconds by default.

Correct Answer: AC

**QUESTION 4**

Refer to the exhibit. Which of these is applied to the Bearer class?

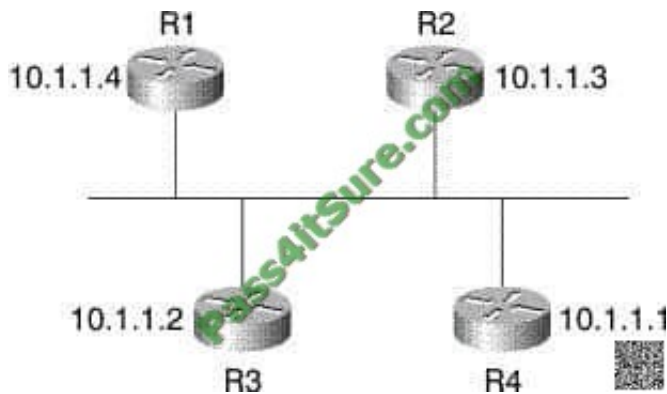
```
!
class-map match-all Signal
  match ip precedence 3
class-map match-any System
  match access-group name Security
  match ip precedence 6
  match ip precedence 7
class-map match-all Bearer
  match ip precedence 5
!
!
policy-map ProviderOut
  class Bearer
    priority 48
  class Signal
    bandwidth 15
  class System
    bandwidth 15
  class class-default
    fair-queue
    random-detect
    shape average 512000
!
interface Ethernet0/1
  description Provider Interface
  ip address dhcp client-id Ethernet0/1
  ip access-group 111 in
  ip nat outside
  full-duplex
  no cdp enable
  service-policy output ProviderOut
!
```

- A. wred
- B. traffic shaping
- C. packet marking
- D. packet classification
- E. FIFO queuing within the class

Correct Answer: E

QUESTION 5

Refer to the exhibit. In this network, each router has a router ID as shown next to the router. While working on a software upgrade on R1 and R2, the network administrator notices that when the upgrade is finished, R4 is the designated router on the link. Is OSPF working correctly on this link, and why or why not?



- A. Yes, OSPF will never allow an existing DR to be replaced when a new router is connected to a broadcast network. In this case, the administrator has recently reloaded R1 and R2, so it would be expected that either R3 or R4 would be the DR on the link.
- B. No, OSPF should always elect the router with the highest router ID as the designated router on the link. The administrator should call for technical support.
- C. Yes, OSPF is operating correctly, because the router with the lowest router ID should always be elected designated router on a broadcast link.
- D. There is not enough information provided in the question to answer accurately.

Correct Answer: A

QUESTION 6

Drag the OSPFv3 type on the left to the correct function code on right.

Select and Place:

Router	9
Prefix	3
NSSA	1
Intrarea Router	4
Intrarea Prefix	7

Correct Answer:



Intrarea Prefix
Prefix
Router
Intrarea Router
NSSA

QUESTION 7

Which statement best describes OSPF external LSAs (type 5)?

- A. OSPF external LSAs are automatically flooded into all OSPF areas, unlike type 7 LSAs, which require that redistribution be configured.
- B. External LSAs (type 5) are automatically changed to type 1 LSAs at ASBRs.
- C. Type 5 LSAs are route summaries describing routes to networks outside the OSPF Autonomous System.
- D. External network LSAs (type 5) redistributed from other routing protocols into OSPF are not permitted to flood into a stub area.

Correct Answer: D

QUESTION 8

Refer to the exhibit. R1 is not learning about the 172.16.10.0 subnet from the BGP neighbor R2 (209.165.202.130). What should be done so that R1 will learn about this network?



- A. Disable auto-summary on R2.



B. Configure an explicit network command for the 172.16.10.0 subnet on R2.

C. Subnet information cannot be passed between IBGP peers.

D. Disable auto-summary on R1.

Correct Answer: B

QUESTION 9

Which value is used in the PIM TYPE field to indicate a register-stop message?

A. 0

B. 1

C. 2

D. 3

Correct Answer: C

QUESTION 10

Which three protocols should be explicitly managed by using Control Plane Policing on an Internet border router? (Choose three.)

A. LDAP

B. ICMP

C. RTP

D. BGP

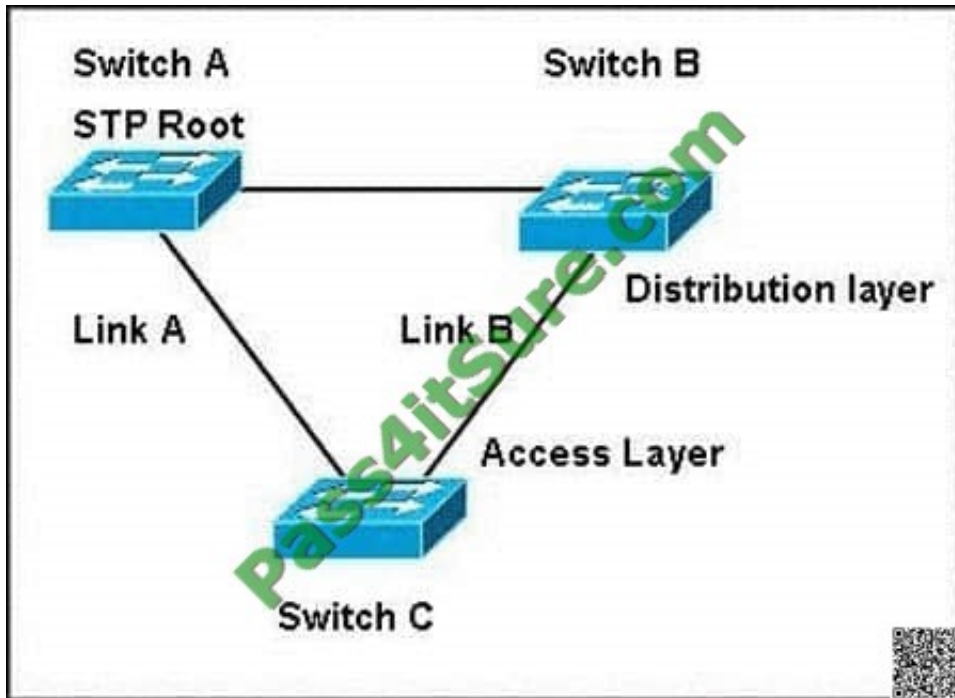
E. SSH

F. RDP

Correct Answer: BDE

QUESTION 11

Refer to the exhibit



Spanning tree protocol is running on all three switches. The switches are configured so that Link A is the active link, and Link B is the standby link. There is a problem occurring where Switch B starts forwarding on Link B causing a routing loop.

What is the likely cause of the problem?

- A. PortFast is not enabled.
- B. There is a port duplex mismatch.
- C. MSTP is enabled without RSTP.
- D. A single instance of STP is enabled instead of PVST.

Correct Answer: B

QUESTION 12

Which two statements are true about RED? (Choose two.)

- A. RED randomly drops packets before the queue becomes full.
- B. RED is always useful, without dependency on flow.
- C. RED increases the drop rate as the average queue size increases.
- D. RED has a per-flow intelligence.

Correct Answer: AC



VCE & PDF

Pass4itSure.com

<https://www.pass4itsure.com/350-001.html>

2021 Latest pass4itsure 350-001 PDF and VCE dumps Download

[Latest 350-001 Dumps](#)

[350-001 PDF Dumps](#)

[350-001 Braindumps](#)



To Read the [Whole Q&As](#), please purchase the [Complete Version](#) from [Our website](#).

Try our product !

100% Guaranteed Success

100% Money Back Guarantee

365 Days Free Update

Instant Download After Purchase

24x7 Customer Support

Average 99.9% Success Rate

More than 800,000 Satisfied Customers Worldwide

Multi-Platform capabilities - [Windows](#), [Mac](#), [Android](#), [iPhone](#), [iPod](#), [iPad](#), [Kindle](#)

We provide exam PDF and VCE of Cisco, Microsoft, IBM, CompTIA, Oracle and other IT Certifications. You can view Vendor list of All Certification Exams offered:

<https://www.pass4itsure.com/allproducts>

Need Help

Please provide as much detail as possible so we can best assist you.

To update a previously submitted ticket:



 One Year Free Update <p>Free update is available within One Year after your purchase. After One Year, you will get 50% discounts for updating. And we are proud to boast a 24/7 efficient Customer Support system via Email.</p>	 Money Back Guarantee <p>To ensure that you are spending on quality products, we provide 100% money back guarantee for 30 days from the date of purchase.</p>	 Security & Privacy <p>We respect customer privacy. We use McAfee's security service to provide you with utmost security for your personal information & peace of mind.</p>
---	---	--

Any charges made through this site will appear as Global Simulators Limited.

All trademarks are the property of their respective owners.

Copyright © pass4itsure, All Rights Reserved.