

Exam : 310-012

**Title : SUN Certified SYSTEM
ADMINISTRATOR FOR
SOLARIS 8 PART 2**

Version : DEMO

www.Pass4itSure.com

1.The action field in the syslogd configuration file may contain which two types of entry? (Choose two.)

- A.a host name prefixed with @
- B.a list of user email addresses
- C.the full path name to a file or device file
- D.a pipe sign (|) followed by a command to which the message output is piped

Correct:A C

2.Which three are message severity entries used in the syslogd configuration file? (Choose three.)

- A.lpr
- B.alert
- C.cron
- D.mark

Correct:A B C

3.Given this entry from the /etc/syslog.conf file: mail.debug ifdef ('LOGHOST', /var/adm/authlog.current, @loghost) Which statement about syslogd behavior is true if a remote host is aliased as loghost?

- A.The messages will be logged in /var/adm/authlog.current.
- B.The messages will be remotely logged in /var/adm/authlog.current.
- C.The messages will be forwarded to the syslogd on the remote host loghost and not recorded locally.
- D.The messages will be logged locally in /var/adm/authlog.current and forwarded to by the loghost.

Correct:A

4.You want to enable the logging of every failed login attempt. To do this you must change the syslogd configuration file from its installation defaults. Which facility should you change?

- A.auth
- B.kern
- C.user
- D.notice
- E.emerg
- F.daemon

Correct:A

5.You have written a start script to launch application XXX when the system starts. You decide to add a command to the script. If the application does not launch, it logs a message with syslogd with the appropriate severity. Which command accomplishes this?

- A.logger XXX failed to start
- B.syslog -s 7 XXX failed to start
- C.logger -p user.err XXX failed to start
- D.logger -F user -s err XXX failed to start
- E.echo XXX failed to start, severity=7 >>/var/adm/messages

Correct:C

6.Which two statements about the m4 macro processor are true? (Choose two.)

- A.The ifdef statement makes it possible to log messages remotely.
- B.Use of the ifdef statement makes remote logging of messages impossible.
- C.Lines containing the ifdef statement are passed directly to syslogd for processing.
- D.The m4 processor passes any line with syntax it does not recognize directly to syslogd.

E.Lines which do not contain recognized m4 syntax are ignored by the m4 processor and consequently do not reach syslogd.

F.The m4 processor processes lines containing the ifdef statement, passing only the results to syslogd.

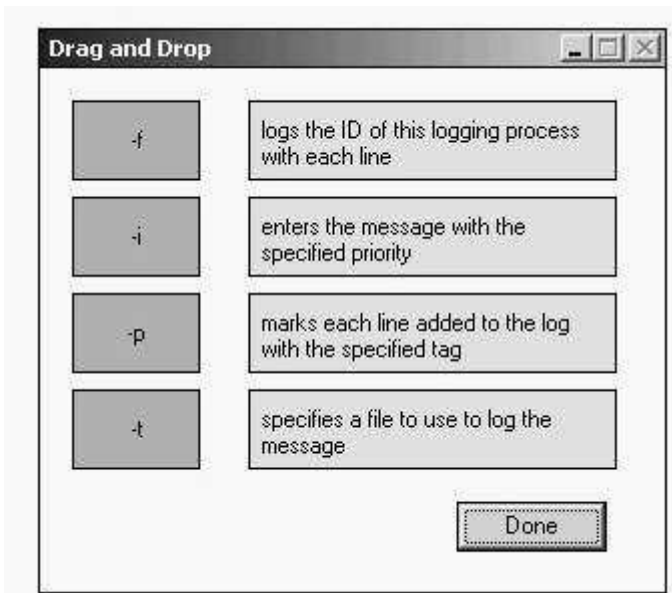
Correct: E F

7.Which three functions can syslogd perform? (Choose three.)

A.writing messages to the system log B.forwarding messages to a list of users. C.forwarding input from root to the user's processes

D.forwarding messages to the syslogd on another host on the network E.writing IPC messages to the processes that are generating errors rapidly F.interrupting processes that are producing errors above a pre-configured threshold **Correct:A B C**

8.Click the Task button. The command logger to register messages with the system log has four options Match each option to its description.



Correct:

Green choice5---->Yellow Choice2

Green choice3---->Yellow Choice4

Green choice4---->Yellow Choice1

Green choice2---->Yellow Choice3

9.Which NIS system(s) contains the original ASCII files that are used to generate the NIS maps?

- A.NIS client only
- B.NIS slave server only
- C.NIS master server only
- D.NIS master server and NIS slave server

Correct:C

10.Which process or daemon is executed by the /usr/lib/netsvc/yp/ypstart script on an NIS client?

- A.ypxfrd
- B.yplibd
- C.ypserv

D.rpc.yppasswdd

Correct:B

11.During the first build of a new NIS map, the slave servers do not know of its existence, so the push process attempt fails, What can you do to recover from this problem?

- A.You transfer the source files from the NIS master to the NIS slave and execute a mark on the NIS slave.
- B.You interrupt the build process with a Control-C, and push all of the maps from the master server at once using the ypinit -s command.
- C.You put the build process into background processing mode, add an empty map to the slave server, and foreground the build process to continue the build.
- D.You interrupt the build process with a Control-C when the push process hangs, and execute the ypxfr command on the map from the slave server(s) to complete the build process.

Correct:D

12.Which command is used to manually pull individual NIS maps from the NIS master?

- A.ypxfr
- B.ypcat
- C.ypserv
- D.yppush

Correct:A

13.While configuring NIS on a system, you execute the command string: #domainname testlab.Region.Org.COM Which two statements about this command string are true? (Choose two.)

- A.The server's name is testlab, and it resides on the region.org.com domain.
- B.Executing this command populates the /etc/defaultdomain file with the domain name.
- C.The domain name is case sensitive, and must be configured exactly as specified on the command-line
- D.The domain name is the entire character string testlab.Region.Org.COM, and no DNS domain is specified.

Correct:C D

14.Which three commands manually pull only the hosts maps from the NIS master to the NIS Slave? (Choose two.)

- A.cd/var/yp; make
- B.ypinit -s nis_master
- C./usr/lib/netsvc/yp/ypxfr/etc/hosts
- D./usr/lib/netsvc/yp/ypxfr hosts.byaddr
- E./usr/lib/netsvc/yp/ypxfr host.byname

Correct:B D

15.Which three daemons are executed by the /usr/lib/netsvc/yp/ypstart script on an NIS master server? (Choose three.)

- A.ypcat
- B.ypbind
- C.ypinit
- D.ypserv
- E.ypxfrd

Correct:A B C

16.You are using CacheFS for a number of your shared directories and need to check if logging has been enabled for /usr/share/main. Which command would check if it was enabled?

- A.cachefslog /usr/share/man
- B.cfsadmin -l /usr/share/man
- C.cachefslog -f /usr/share/man
- D.cachefslog -l /usr/share/man

Correct:A

17.Which command creates a log called /var/home_cache.log and initiates logging for the /export/home file system which is being cached?

- A.cachefslog /var/home_cache.log
- B.cachefslog -h /var/home_cache.log
- C.cachefswssize /var/home_cache.log
- D.cachefslog -f /var/home_cache.log /export/home
- E.cachefslog -s /var/home_cache.log /export/home

Correct:D

18.Which command configures the cache /export/home_cache that should be used when caching the /export/home file system?

- A.cfsadmin -l /export/home_cache
- B.cfsadmin -p /export/home_cache
- C.cfsadmin -c /export/home_cache
- D.cfsadmin -m /export/home_cache
- E.cachefslog -c /export/home_cache

Correct:C

19.Which command should be used to manually invoke a consistency check and perform any necessary updates on a cacheFS file system?

- A.cfsadmin -c
- B.cfsadmin -d
- C.cfsadmin -s
- D.cachefsstat -z
- E.cachefswssize -s

Correct:C

20.What must be done before you run the command to check the integrity of the cached system /export/home_cache?

- A.delete the cache
- B.check the cache statistics
- C.obtain the cache ID number
- D.unmount the cached file system
- E.adjust the working set size of the cache
- F.find all backup superblock numbers for the file system

Correct:D

Trying our product !

- ★ **100%** Guaranteed Success
- ★ **100%** Money Back Guarantee
- ★ **365 Days** Free Update
- ★ **Instant Download** After Purchase
- ★ **24x7** Customer Support
- ★ Average **99.9%** Success Rate
- ★ More than **69,000** Satisfied Customers Worldwide
- ★ Multi-Platform capabilities - **Windows, Mac, Android, iPhone, iPod, iPad, Kindle**

Need Help

Please provide as much detail as possible so we can best assist you.

To update a previously submitted ticket:



Submit A Ticket

One Year Free Update



Free update is available within One Year after your purchase. After One Year, you will get 50% discounts for updating. And we are proud to boast a 24/7 efficient Customer Support system via Email.



Money Back Guarantee

To ensure that you are spending on quality products, we provide 100% money back guarantee for 30 days from the date of purchase.



Security & Privacy

We respect customer privacy. We use McAfee's security service to provide you with utmost security for your personal information & peace of mind.

Guarantee & Policy | Privacy & Policy | Terms & Conditions

Any charges made through this site will appear as Global Simulators Limited.

All trademarks are the property of their respective owners.

Copyright © 2004-2014, All Rights Reserved.