



300-620^{Q&As}

Implementing Cisco Application Centric Infrastructure (DCACI)

Pass Cisco 300-620 Exam with 100% Guarantee

Free Download Real Questions & Answers **PDF** and **VCE** file from:

<https://www.pass4itsure.com/300-620.html>

100% Passing Guarantee
100% Money Back Assurance

Following Questions and Answers are all new published by Cisco
Official Exam Center

-  **Instant Download** After Purchase
-  **100% Money Back** Guarantee
-  **365 Days** Free Update
-  **800,000+** Satisfied Customers





QUESTION 1

Refer to the exhibit.

Static Path - Pod-1/Node-101/eth1/2

Policy Faults History

Properties

Path: Pod-1/Node-101/eth1/2

Path Description:

Port Encap (or Secondary VLAN for Micro-Seg): VLAN 245
Integer Value

Deployment Immediacy: Immediate On Demand

Primary VLAN for Micro-Seg: VLAN
Integer Value

Mode: Trunk Access (802.1P) Access (Untagged)

IGMP Snoop Static Group:

Group Address	Source Address
---------------	----------------

Show Usage Reset Submit

An engineer configures a static port binding for EPG-3. These Cisco ACI objects are already configured:

1. The EPG-3 is associated with a physical domain.
2. The physical domain is associated with a VLAN pool called VLP-1.
3. The VLAN pool contains VLANs 200-250. Which step completes the configuration?
A. Associate an interface policy group with an interface selector for eth1/2.
B. Associate the switch profile to an interface profile by using an interface policy.
C. Associate the domain to an interface selector by using an AEP.
D. Associate an interface policy group to a switch profile for Node-101.

Correct Answer: A

**QUESTION 2**

Which tenant is used when configuring in-band management IP addresses for Cisco APICs, leaf nodes, and spine nodes?

- A. default
- B. infra
- C. common
- D. mgmt

Correct Answer: D

Reference:

https://www.cisco.com/c/en/us/td/docs/switches/datacenter/aci/apic/sw/kb/b_KB_Configuring_Static_Management_Access.html#concept_CFF63FEBE947424291B0F10E6F23DA7D

QUESTION 3

A recent set of changes by a Cisco ACI administrator corrupted the APIC cluster. The ACI engineer must restore the configuration of the previous day. The APIC nodes in the cluster can communicate but fail to connect with other networks. The administrator plans to overwrite the entire existing configuration with the backup configuration. Which set of actions accomplishes this task?

- A. Restore using the last configuration on the factory-reset APIC. Use an import policy set to Best-effort.
- B. Roll back the configuration using a local snapshot. Use an import policy set to Atomic Replace.
- C. Roll back the configuration using a local snapshot. Use an import policy set to Best-effort Merge.
- D. Restore the configuration imported from an FTP server. Use an import policy set to Atomic.

Correct Answer: B

Atomic Replace - overwrites existing configuration with imported configuration data. Any objects in the existing configuration that do not exist in the imported configuration are deleted. Objects are deleted from the existing configuration that have children in the existing configuration but do not have children in the incoming imported configuration. For example, if an existing configuration has two tenants, solar and wind, but the imported backed up configuration was saved before the tenant wind was created, tenant solar is restored from the backup but tenant wind is deleted.

Rollback is when a previous configuration snapshot is used to replace the current APIC configuration. This can be done on the granularity of a snapshot file. This means that a single tenant can be moved back to a previous configuration while the other tenants keep their current configuration state. This is often referred to as partial rollback. When all of the configuration files for a particular version are used to replace the current APIC configuration, this is referred to as a full rollback.

QUESTION 4



An engineer must limit management access to the Cisco ACI fabric that originates from a single subnet where the NOC operates. Access should be limited to SSH and HTTPS only. Where should the policy be configured on the Cisco APIC to meet the requirements?

- A. policy in the management tenant
- B. ACL on the console interface
- C. ACL on the management interface of the APIC
- D. policy on the management VLAN

Correct Answer: A

Reference:

https://www.cisco.com/c/en/us/td/docs/switches/datacenter/aci/apic/sw/1-x/cli/nx/cfg/b_APIC_NXOS_CLI_User_Guide/b_APIC_NXOS_CLI_User_Guide_chapter_01000.html

QUESTION 5

An engineer wants to filter the System Faults page and view only the active faults that are present in the Cisco ACI fabric. Which two lifecycle stages must be selected for filtering? (Choose two.)

- A. Raised
- B. Retaining
- C. Soaking, Clearing
- D. Raised, Clearing
- E. Soaking

Correct Answer: AE

Raised and Soaking.

Soaking = initial state of a fault, when problem condition first detected.

Raised = fault not resolved within soaking interval.

QUESTION 6

A customer implements RBAC on a Cisco APIC using a Windows RADIUS server that is configured with network control policies. The APIC configuration is as follows: Tenant = TenantX Security Domain = TenantX-SD User = X

The customer requires User X to have access to TenantX only, without any extra privilege in the Cisco ACI fabric domain. Which Cisco AV pair must be implemented on the RADIUS server to meet these requirement?

- A. shell:domains = TenantX-SD/fabric-admin/,common//read-all
- B. shell:domains = TenantX-SD/tenant-admin



C. shell:domains = TenantX-SD/tenant-ext-admin/,common//read-all

D. shell:domains = TenantX-SD/tenant-admin/,common//read-all

Correct Answer: D

https://www.cisco.com/c/en/us/td/docs/switches/datacenter/aci/apic/sw/5-x/security/cisco-apic-security-configuration-guide-50x/m_access_authentication_and_accounting.html

QUESTION 7

In-band is currently configured and used to manage the Cisco ACI fabric. The requirement is for leaf and spine switches to use out-of-band management for NTP protocol. Which action accomplishes this goal?

- A. Select Out-of-Band as Management EPG in the default DateTimePolicy.
- B. Create an Override Policy with NTP Out-of-Band for leaf and spine switches.
- C. Change the interface used for APIC external connectivity to ooband.
- D. Add a new filter to the utilized Out-of-Band-Contract to allow NTP protocol.

Correct Answer: A

In the Management EPG drop-down list, if the NTP server is reachable by all nodes on the fabric through out-of-band management, choose Out-of-Band. If you have deployed in-band management, see the details about In-Band Management

NTP. Click OK.

In-band IP addressing used within the ACI fabric is not reachable from anywhere outside the fabric. To leverage an NTP server external to the fabric with in-band management, construct a policy to enable this communication..

https://www.cisco.com/c/en/us/td/docs/switches/datacenter/aci/apic/sw/3-x/basic_config/b_APIC_Basic_Config_Guide_3_x/b_APIC_Basic_Config_Guide_3_x_chapter_0111.html

QUESTION 8

A customer creates Layer 3 connectivity to the outside network. However, only border leaf switches start receiving destination updates to other networks from the newly created L3Out. The updates must also be propagated to other Cisco ACI leaf switches. The L3Out is linked with the EPGs via a contract. Which action must be taken in the pod policy group to accomplish this goal?

- A. Apply a BGP route reflector policy.
- B. Enable a COOP policy.
- C. Configure an IS-IS policy.
- D. Implement an access management policy.

Correct Answer: A

**QUESTION 9**

What is the effect of enabling the disable Remote EP learn feature?

- A. It disables remote IP endpoint learning on all leaf nodes in the fabric.
- B. It disables remote IP endpoint learning on leaf switches that do not have L3Outs.
- C. It limits learning of compute leaf endpoints on border leaves.
- D. It prevents border leaf switches from receiving routes through peering with external routers.

Correct Answer: A

<https://unofficialaciguide.com/2018/11/29/aci-best-practice-configurations/>

QUESTION 10

An engineer created two interface protocol policies called Pol_CDP40275332 and Pol_LLDP46783451. The policies must be used together in a single policy. Which ACI object must be used?

- A. interface policy group
- B. switch policy group
- C. switch profile
- D. interface profile

Correct Answer: A

QUESTION 11

An engineer must create a backup of the Cisco ACI fabric for disaster recovery purposes. The backup must be transferred over a secure and encrypted transport. The backup file must contain all user and password related information. The engineer also wants to process and confirm the backup file validity by using a Python script. This requires the data structure to have a format similar to a Python dictionary. Which configuration set must be used to meet these requirements?

- A. Under the Create Remote location settings, select Protocol: FTP Under the Export policy, select

-Format: XML

-Modify Global AES Encryption Settings: Enabled

- B. Under the Create Remote location settings, select Protocol: FTP Under the Export policy, select



-Format: XML

-Modify Global AES Encryption Settings: Disabled

C. Under the Create Remote location settings, select Protocol: SCP Under the Export policy, select

-Format: JSON

-Modify Global AES Encryption Settings: Disabled

D. Under the Create Remote location settings, select Protocol: SCP Under the Export policy, select

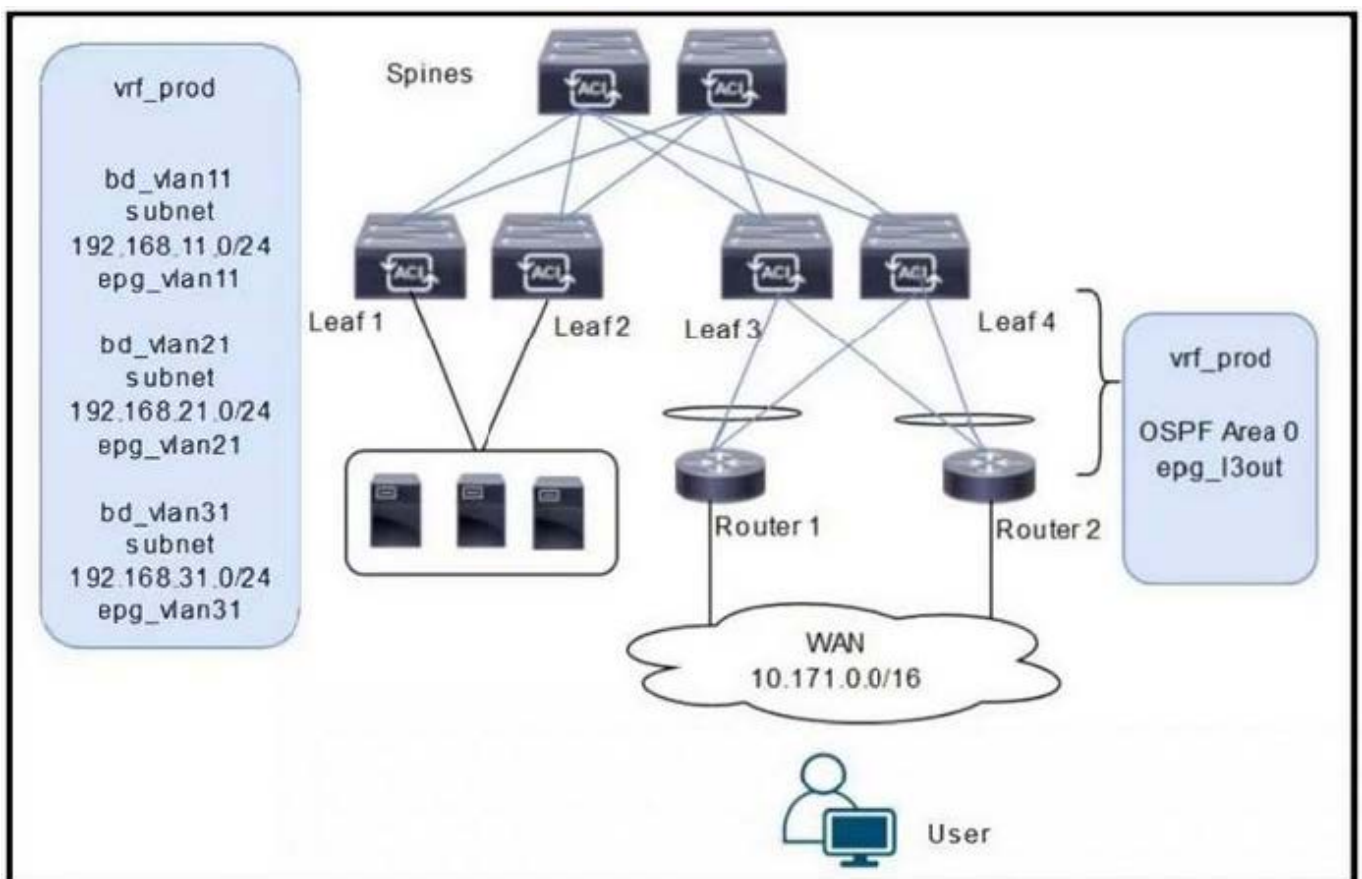
-Format: JSON

-Modify Global AES Encryption Settings: Enabled

Correct Answer: D

QUESTION 12

Refer to the exhibit.



A customer is deploying a WAN with these requirements:

1.



Routers 1 and 2 must receive only routes 192.168.11.0/24 and 192.168.21.0/24 from the Cisco ACI fabric.

2.

Reachability to the WAN users must be permitted only for the servers that are located in vrf_prod.

Which settings must be configured to meet these objectives?

- A. Configure the subnets 192.168.11.0/24 and 192.168.21.0/24 as Private to VRF. Configure the subnet 192.168.31.0/24 as Advertised Externally. Configure an EPG subnet 0.0.0.0/0 as Shared Route Control Subnet.
- B. Configure the subnets 192.168.11.0/24 and 192.168.21.0/24 as Private to VRF. Configure the subnet 192.168.31.0/24 as Advertised Externally. Configure an EPG subnet 0.0.0.0/0 as External Subnets for External EPG.
- C. Configure the subnets 192.168.11.0/24 and 192.168.21.0/24 as Advertised Externally. Configure the subnet 192.168.31.0/24 as Private to VRF. Configure an EPG subnet 0.0.0.0/0 as External Subnets for External EPG.
- D. Configure the subnets 192.168.11.0/24 and 192.168.21.0/24 as Advertised Externally. Configure the subnet 192.168.31.0/24 as Private to VRF. Configure an EPG subnet 0.0.0.0/0 as Shared Route Control Subnet.

Correct Answer: C

QUESTION 13

A Cisco ACI environment is configured to integrate with a vCenter environment using the VMM domain name west_coast_VMM. Within the ACI environment, only tenant west_coast has EPGs associated with west_coast_VMM. This deployment is new, so these EPGs currently do not have any members. A systems engineer is setting up vCenter, creates a VDS named west-coast-VMM, and deletes the VDS named west_coast_VMM. The systems engineer creates the necessary port groups that correspond with the EPGs, but when VMs are connected to the port groups, they cannot ping their gateway. Which action establishes connectivity?

- A. Associate the EPGs to west-coast-VMM.
- B. Rename the VDS to west_coast_VMM.
- C. Use the EPG encap-VLAN on the port groups.
- D. Disconnect Cisco APIC connectivity from vCenter.

Correct Answer: B

QUESTION 14

A network administrator configures AAA inside the Cisco ACI fabric. The authentication goes through the local users if the TACACS+ server is not reachable. If the Cisco APIC is out of the cluster, the access must be granted through the fallback domain. Which configuration set meets these requirements?

- A. Ping Check: True Default Authentication Realm: Local Fallback Check: True
- B. Ping Check: True Default Authentication Realm: TACACS+ Fallback Check: False



C. Ping Check: False Default Authentication Realm: Local Fallback Check: False

D. Ping Check: False Default Authentication Realm: TACACS+ Fallback Check: True

Correct Answer: B

Unclear what is supposed be the ping check Anyway Default Authentication Realm hall be TACACS+ and you shall not put fallback check on if required working fallback local authentication Note: Make sure to leave/set the Fallback Check property to false. Setting the Fallback Check property to true may cause local logins to fail.

https://www.cisco.com/c/en/us/td/docs/switches/datacenter/aci/apic/sw/kb/b_KB_ACI-TACACS-config.html

QUESTION 15

An engineer is implementing a Cisco ACI environment that consists of more than 20 servers. Two of the servers support only Cisco Discovery Protocol with no order link discovery protocol. The engineer wants the servers to be discovered automatically by the Cisco ACI fabric when connected. Which action must be taken to meet this requirement?

A. Create an override policy that enables Cisco Discovery Protocol after LLDP is enabled in the default policy group.

B. Configure a higher order interface policy that enables Cisco Discovery Protocol for the interface on the desired leaf switch.

C. Configure a lower order policy group that enables Cisco Discovery Protocol for the interface on the desired leaf switch.

D. Create an interface profile for the interface that disables LLDP on the desired switch that is referenced by the interface policy group.

Correct Answer: A

<https://www.tejasjain.com/2019/10/cisco-aci-cdp-configuration.html>

[300-620 PDF Dumps](#)

[300-620 Exam Questions](#)

[300-620 Brindumps](#)