



300-550^{Q&As}

Designing and Implementing Cisco Network Programmability

Pass Cisco 300-550 Exam with 100% Guarantee

Free Download Real Questions & Answers **PDF** and **VCE** file from:

<https://www.pass4itsure.com/300-550.html>

100% Passing Guarantee
100% Money Back Assurance

Following Questions and Answers are all new published by Cisco
Official Exam Center

-  **Instant Download** After Purchase
-  **100% Money Back** Guarantee
-  **365 Days** Free Update
-  **800,000+** Satisfied Customers



**QUESTION 1**

What is an advantage of using SDK?

- A. to deconstruct the low-level object model
- B. to develop useful code quickly by using abstractions
- C. to learn the underlying service that is exposed by an API
- D. to create a flexible applications framework

Correct Answer: D

QUESTION 2

You are developing a YANG-based policy model to encode the type of entity that is connected to a given interface, such as partner, supplier, customer, or distributor. Which YANG statement limits any configuration action?

- A. when
- B. case
- C. enumeration
- D. contains

Correct Answer: A

QUESTION 3

You can use Visore to accomplish which task?

- A. Monitor faults and events by using a subscription model
- B. Read object properties and information
- C. Update any properties of an object that are not read-only
- D. Update any properties of an object

Correct Answer: D

The Managed Object Browser, or Visore, is a utility built into the APIC that provides a graphical view of the managed objects (MOs) using a browser.

Reference: http://www.cisco.com/c/en/us/td/docs/switches/datacenter/aci/apic/sw/1-x/api/rest/b_APIC_RESTful_API_User_Guide/b_IFC_RESTful_API_User_Guide_chapter_0100.html



QUESTION 4

What are two node types in a YANG data model? (Choose two.)

- A. grouping
- B. leaf
- C. container
- D. module
- E. instance

Correct Answer: BC

The nodes types (for data modeling) are: leaf node - contains a single value of a specific type container node - contains a grouping of related nodes containing only child nodes, which can be any of the four node types

Reference: http://www.cisco.com/c/en/us/td/docs/iosxr/ncs5000/DataModels/b-Datamodels-cg-ncs5000/b-Datamodels-cg-ncs5000_chapter_00.html

QUESTION 5

Drag and drop the technology on the left to its appropriate use case on the right.

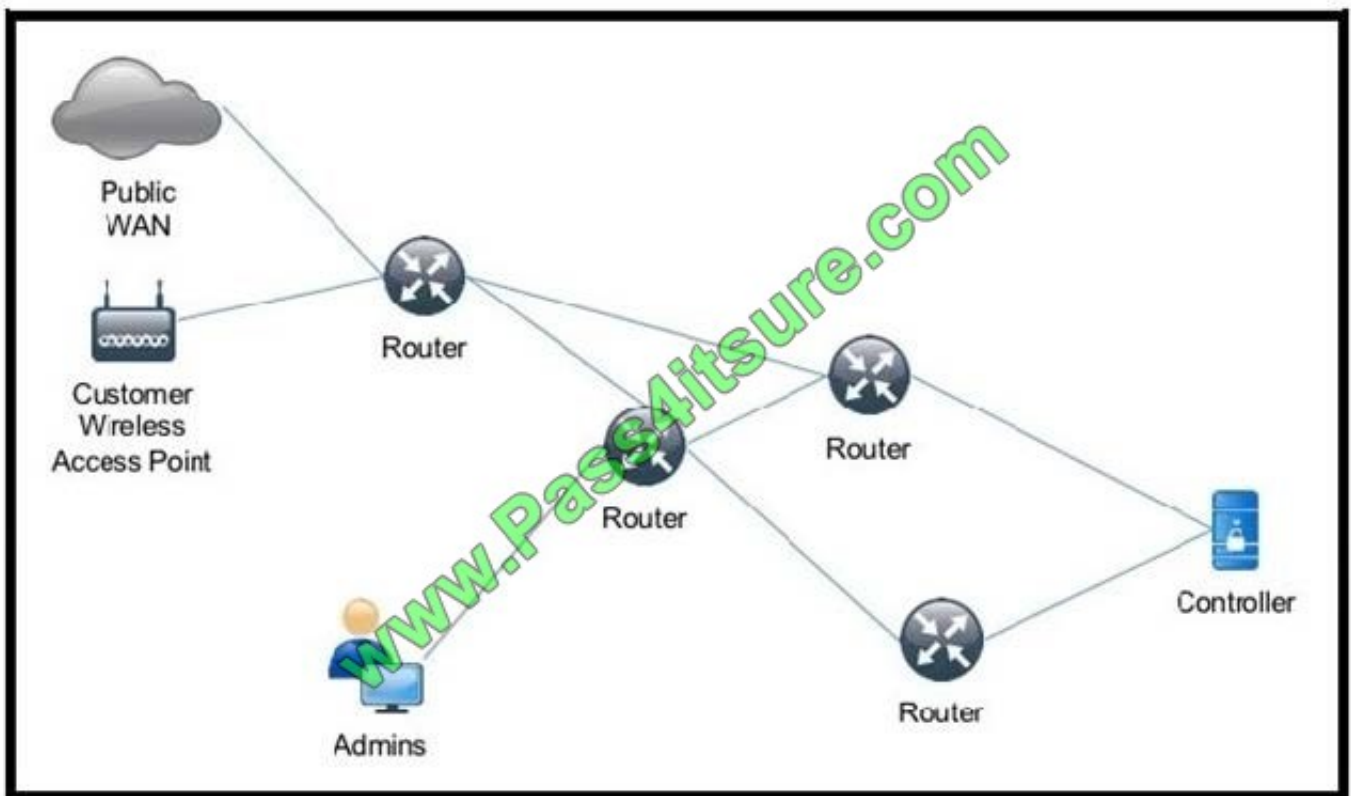
Select and Place:

NETCONF	standards-based protocol that is used to distribute policies to programmable network elements
RESTCONF	used to distribute the traffic engineering database
OpenFlow	used to send RPCs to retrieve operational data via SSH
OpFlex	used to program the data plane of network devices
PCEP	uses HTTP verbs for getting and setting configuration data
BGP-LS	uses TLVs to pass messages between client and server

Correct Answer:



QUESTION 6



Refer to the exhibit. Which action effectively secures the controller?

- A. Enable HTTP to HTTPS redirect.
- B. Require complex passwords.
- C. Use NUT on the router before the controller.
- D. Blacklist the public WAN.



E. Whitelist the Admins network and block all others.

Correct Answer: A

QUESTION 7

Which communication mechanism does NETCONF use?

- A. SOAP over HTTPS
- B. YAML over SSH
- C. YAML over HTTPS
- D. RPC over SSH

Correct Answer: D

NETCONF uses a simple RPC-based mechanism to facilitate communication between a client and a server. The client can be a script or application typically running as part of a network manager. The server is typically a network device. The terms "device" and "server" are used interchangeably in this document, as are "client" and "application".

Reference: <https://tools.ietf.org/html/rfc6241>

QUESTION 8

Which two protocols can the Cisco APIC-EM use to communicate with supported platforms? (Choose two.)

- A. OpFlex
- B. SNMPv2c
- C. SSH
- D. HTTPS
- E. RPC
- F. OpenFlow

Correct Answer: BC

The Cisco APIC-EM communicates with its supported platforms using the following protocols: SNMPv2c or SNMPv3 Telnet or SSH Reference: http://www.cisco.com/c/en/us/td/docs/cloud-systems-management/application-policy-infrastructure-controller-enterprise-module/1-0-x/deploy-guide/b_apic-em_deploy_guide_v_1_0_0_x/b_apic-em_deploy_guide_v_1_0_0_x_chapter_01.pdf

QUESTION 9

Drag and drop the tasks on the left to the appropriate category on the right.



Select and Place:

Start a web server.

Onboard new employees.

Manage the software service lifecycle.

Deploy software image files.

Orchestration

Automation

Correct Answer:

Orchestration

Start a web server.

Onboard new employees.

Automation

Manage the software service lifecycle.

Deploy software image files.

QUESTION 10

Refer to the exhibit. Which effect does the parameter ?session=test have in this VIRL API call?

```
curl -X POST -u guest:guest -- header "Content-Type/text/xml; charset=UTF--" --
data @API.virl http://virl-host:19399/simengine/rest/launch?session=test
```



- A. The API call is parsed and validated by VIRL, but no simulation is started.
- B. The topology file "APIvirl" is validated for proper structure content.
- C. The simulation is started in a special "test" mode that protects it from adversely affecting other simulations
- D. The simulation is started with the name "test".

Correct Answer: A

QUESTION 11

Refer to the exhibit. A network engineer created a Bash script to automate some network device tasks. What are two potential risks when a network operator runs this script as written? (Choose two.)

```
#!/bin/sh

device_file=$1
cfg_file=$2

IFS='
'

for i in $(cat ${device_file}); do
    ssh -1 opsteam ${1} copy $ {cfg_file} runn &
done
```

- A. The script results in network devices losing connectivity.
- B. The script executes too slowly.
- C. The script configures unintended commands.
- D. The script exposes users' passwords.
- E. The script passes configuration data in cleartext.

Correct Answer: BC

QUESTION 12

Refer to the exhibit.



```
def mac_to_subnet (mac):
    for subnet in subnets:
        part = subnet[:9] [-1]
        if part in mac:
            return subnet

mac_addresses = ["1111:2222:3333", "4444:5555:6666", "7777:8888:9999"]
subnets = ["192.168.1.0/24",
            "192.168.2.0/24",
            "192.168.3.0/24",
            "192.168.4.0/24",
            "192.168.5.0/24",
            "192.168.6.0/24",
            "192.168.7.0/24",
            "192.168.8.0/24",
            "192.168.9.0/24"]

results = []
for i, mac_address in enumerate(mac_addresses):
    key = mac_address.split(':')[i] # 1111, 5555, 9999
    results.append(mac_to_subnet(key))

print(results)
```

What is the output from this Python3 script?

- A. ['192.168.1.0/24', '192.168.2.0/24', '192.168.3.0/24']
- B. ['192.168.1.0/24', '192.168.5.0/24', '192.168.9.0/24']
- C. ['192.168.4.0/24', '192.168.5.0/24', '192.168.6.0/24']
- D. ['192.168.1.0/24', '192.168.7.0/24', '192.168.9.0/24']

Correct Answer: B

[300-550 PDF Dumps](#)

[300-550 VCE Dumps](#)

[300-550 Brindumps](#)



To Read the [Whole Q&As](#), please purchase the [Complete Version](#) from [Our website](#).

Try our product !

100% Guaranteed Success

100% Money Back Guarantee

365 Days Free Update

Instant Download After Purchase

24x7 Customer Support

Average 99.9% Success Rate

More than 800,000 Satisfied Customers Worldwide

Multi-Platform capabilities - [Windows](#), [Mac](#), [Android](#), [iPhone](#), [iPod](#), [iPad](#), [Kindle](#)

We provide exam PDF and VCE of Cisco, Microsoft, IBM, CompTIA, Oracle and other IT Certifications. You can view Vendor list of All Certification Exams offered:

<https://www.pass4itsure.com/allproducts>

Need Help

Please provide as much detail as possible so we can best assist you.

To update a previously submitted ticket:



 <p>One Year Free Update Free update is available within One Year after your purchase. After One Year, you will get 50% discounts for updating. And we are proud to boast a 24/7 efficient Customer Support system via Email.</p>	 <p>Money Back Guarantee To ensure that you are spending on quality products, we provide 100% money back guarantee for 30 days from the date of purchase.</p>	 <p>Security & Privacy We respect customer privacy. We use McAfee's security service to provide you with utmost security for your personal information & peace of mind.</p>
---	---	--

Any charges made through this site will appear as Global Simulators Limited.

All trademarks are the property of their respective owners.

Copyright © pass4itsure, All Rights Reserved.