



2V0-642^{Q&As}

VMware Certified Professional 6 - Network Virtualization 6.2 Exam

Pass VMware 2V0-642 Exam with 100% Guarantee

Free Download Real Questions & Answers **PDF** and **VCE** file from:

<https://www.pass4itsure.com/2v0-642.html>

100% Passing Guarantee
100% Money Back Assurance

Following Questions and Answers are all new published by VMware
Official Exam Center

-  **Instant Download** After Purchase
-  **100% Money Back** Guarantee
-  **365 Days** Free Update
-  **800,000+** Satisfied Customers



**QUESTION 1**

Which tool is used to display VXLAN connection information?

- A. pktcap-uw
- B. NSX Controller CLI
- C. esxtop
- D. VDS Health Check

Correct Answer: B

QUESTION 2

A security administrator needs to create a Security Group based on an Active Directory group. However, AD Groups are not available as an option. What must the administrator configure before AD Groups are available?

- A. Guest Introspection virtual machines must be joined to the domain
- B. Inventory Service must be registered with a domain account
- C. NSX Manager must be registered with Active Directory
- D. NSX Controller must be registered with Active Directory

Correct Answer: C

QUESTION 3

Which vSphere network object abstracts the physical network, provides access-level switching in the hypervisor and enables support for overlay networking?

- A. Standard Switch
- B. Distributed Port Group
- C. Distributed Switch
- D. Logical Switch

Correct Answer: C

QUESTION 4

What are the correct steps for connecting a virtual machine to a logical switch?

- A. Select the logical switch, select the virtual machine, click the Add Virtual Machine icon, select the vNIC to connect.



B. Select the logical switch, click the Add Virtual Machine Icon, select the VM, select the vNIC to connect.

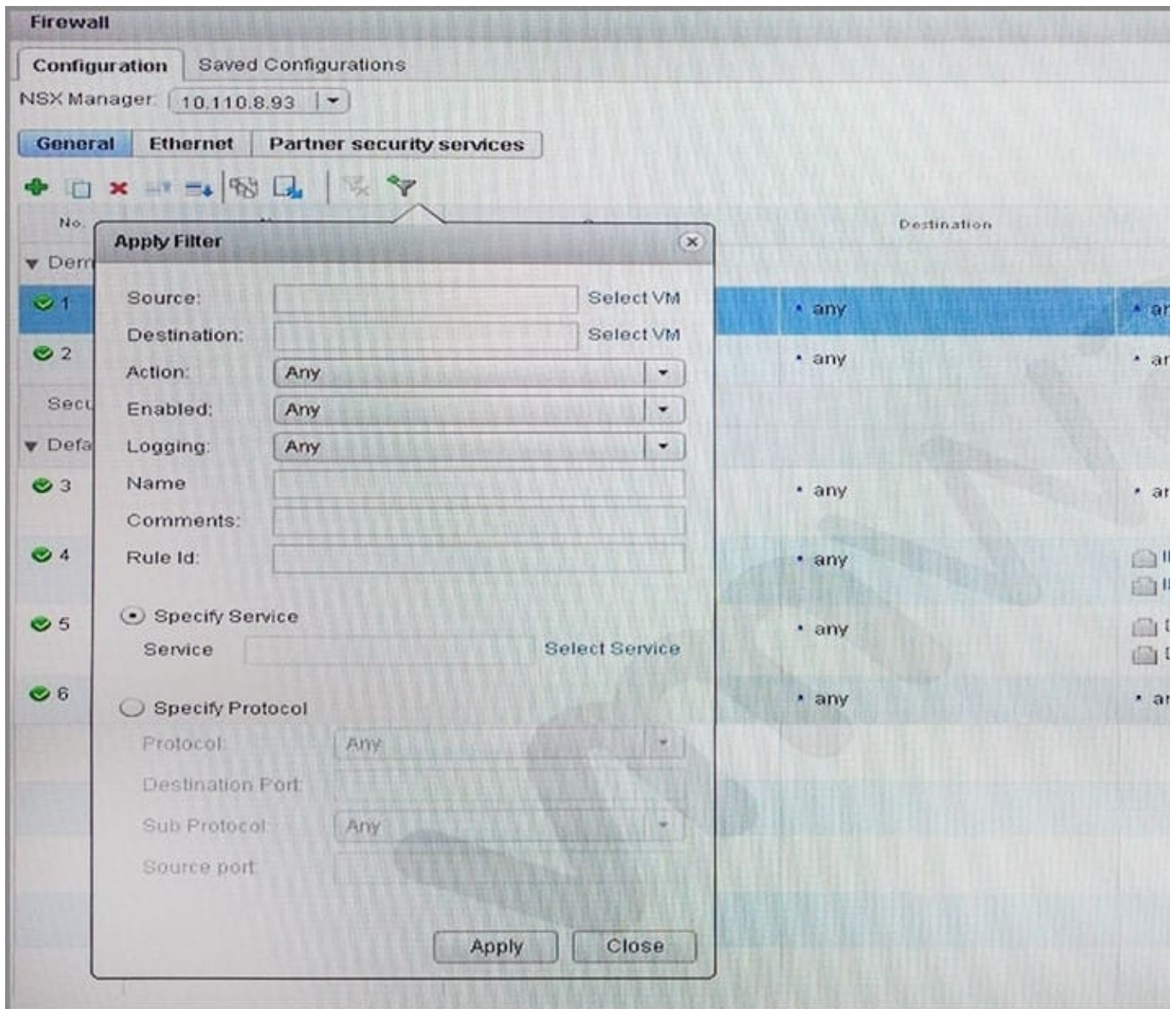
C. Select the vNIC, click the Add Virtual Machine Icon, select the logical switch.

D. Click the Add Virtual Machine icon, select the logical switch, vNIC to connect.

Correct Answer: B

QUESTION 5

An NSX administrator is creating a filter as shown below.



What would be the purpose of creating a filter?

A. To quickly add a new rule.

B. To temporarily filter traffic.



- C. To quickly remove a rule.
- D. To quickly identify rules.

Correct Answer: D

QUESTION 6

Which two statements are true regarding L2 Bridges and Distributed Logical Routers? (Choose two.)

- A. There can only be one instance of an L2 Bridge on a DLR.
- B. Each L2 bridge instance can map to multiple VLANs.
- C. Each L2 bridge instance can only map to a single VLAN.
- D. There can be multiple instances of an L2 bridge on a DLR.

Correct Answer: CD

QUESTION 7

You have deployed an Edge Services Gateway with the following interface configuration:

Configure interfaces of this NSX Edge.

✎ ✖ ✓ 🚫 ⚙️ Actions

vNIC#	Name	IP Address	Subnet Prefix Length	Connected To
0	Uplink	192.168.100.3* 192.168.100.4	24	vds-mgt_Uplink Network
1	Transit-Network	192.168.5.1*	29	Transit-Network-01

Your customer has requested that you provide the ability to use Remote Desktop Protocol to log into a virtual machine that has a tenant IP address of 192.168.7.21 using the provider IP address 192.168.100.4. You have performed the following configuration however, you cannot RDP into the virtual machine.



Edit DNAT Rule

Applied On: Transit-Network

Original IP/Range: * 192.168.100.4

Protocol: rdp

Original Port/Range: any

Translated IP/Range: * 192.168.7.21

Translated Port/Range: any

Description:

Enabled

Enable logging

OK Cancel

What configuration change do you need to make to allow this connection?

- A. Change Applied On to "Uplink".
- B. Change the Protocol to "any".
- C. Change the Translated Port/Range to "rdp".
- D. Swap the Original IP/Range and Translated IP/Range IP Addresses.

Correct Answer: A

QUESTION 8

Which two NSX roles could be used to create security policies? (Choose two.)

- A. Enterprise Administrator
- B. Security Administrator
- C. NSX Administrator
- D. Auditor



Correct Answer: AB

QUESTION 9

What is required before running an Activity Monitoring report?

- A. Enable data collection on the NSX Controller.
- B. Enable data collection on the vCenter Server.
- C. Enable data collection on the NSX Manager.
- D. Enable data collection on the virtual machine.

Correct Answer: D

QUESTION 10

Which NSX component can validate that security policies at your organization are being enforced correctly?

- A. Activity Monitoring
- B. Flow Monitoring
- C. ERSPAN
- D. Distributed firewalls

Correct Answer: A

QUESTION 11

Which three NSX services are available for synchronization in a Cross-vCenter implementation? (Choose three.)

- A. Spoofguard
- B. Distributed Firewall
- C. Edge Firewall
- D. Logical Switch
- E. Transport Zone

Correct Answer: BDE

QUESTION 12

An organization is planning to use NSX as part of a disaster recovery project to provide consistent networking between



two sites. Each site has one vCenter server. The organization requires universal objects and requires components to function during a site outage.

What is the minimum total instances of NSX Manager(s) and NSX Controller(s) that must be deployed across both sites to support the required functionality?

- A. Two NSX Managers and two NSX Controllers
- B. Two NSX Managers and six NSX Controllers
- C. Two NSX Managers and three NSX Controllers
- D. Two NSX Managers and four NSX Controllers

Correct Answer: C

QUESTION 13

Which three objects are supported for universal synchronization in a Cross-vCenter NSX deployment? (Choose three.)

- A. IP Pools
- B. IP Sets
- C. L2 bridges
- D. MAC Sets
- E. Transport Zones

Correct Answer: BDE

QUESTION 14

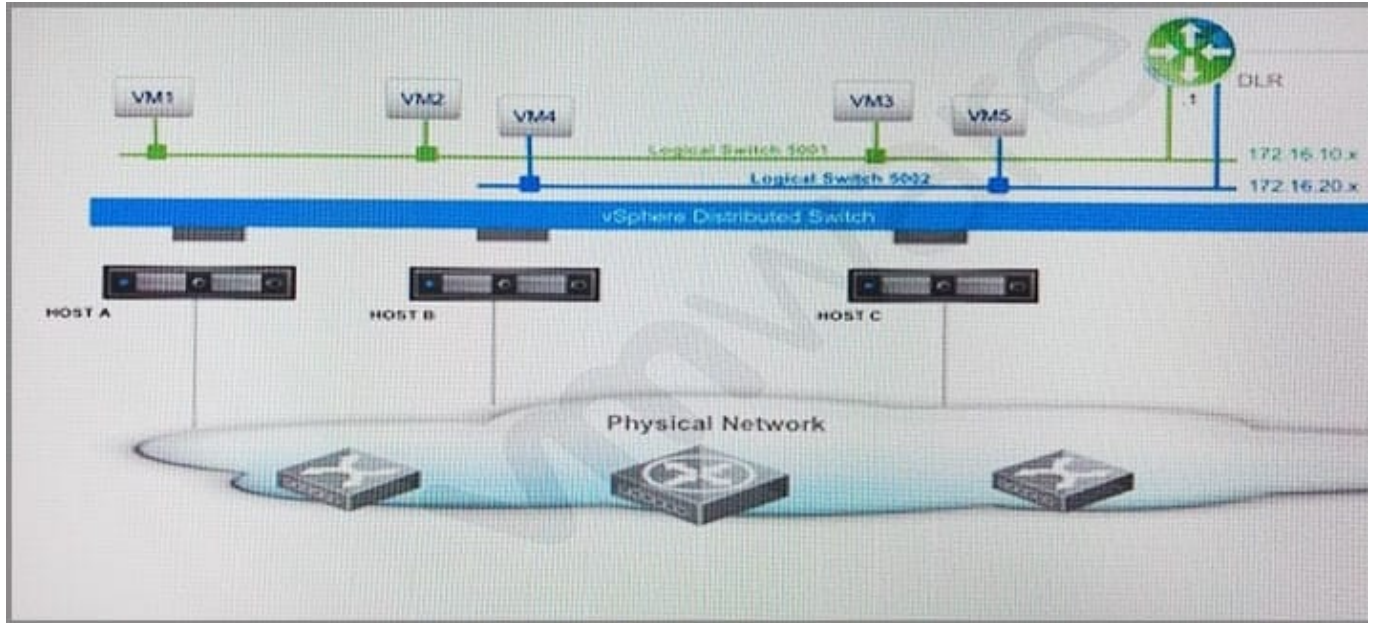
When deploying a standalone NSX Edge as a Layer 2 VPN client, which port needs to be configured on the client vSphere Distributed Switch?

- A. Trunk port
- B. Span port
- C. Sink port
- D. Mirror port

Correct Answer: A

QUESTION 15

An NSX Administrator is examining traffic on the network shown below.



What is the packet flow when VM1 communicates to VM5?

- A. Host A will perform a destination lookup, route the packet, switch the packet onto segment 5002, then encapsulate and send the packet to Host C.
- B. Host A will perform a destination lookup, switch the packet onto segment 5002, route the packet, then encapsulate the packet and send it to the DLR control VM.
- C. Host A will encapsulate the packet, send the encapsulated packet to host C, Host C will perform a destination lookup and switch the packet onto segment 5002.
- D. Host A will encapsulate the packet, perform a destination lookup, route the packet to the DLR control VM, the control DLR will bridge the packet onto segment 5002.

Correct Answer: A

[2V0-642 VCE Dumps](#)

[2V0-642 Practice Test](#)

[2V0-642 Brindumps](#)