



# 250-447<sup>Q&As</sup>

Administration of Symantec Client Management Suite 8.5

## Pass Symantec 250-447 Exam with 100% Guarantee

Free Download Real Questions & Answers **PDF** and **VCE** file from:

<https://www.pass4itsure.com/250-447.html>

100% Passing Guarantee  
100% Money Back Assurance

Following Questions and Answers are all new published by Symantec  
Official Exam Center

- ⚙️ **Instant Download** After Purchase
- ⚙️ **100% Money Back** Guarantee
- ⚙️ **365 Days** Free Update
- ⚙️ **800,000+** Satisfied Customers





### QUESTION 1

When investigating Driver Management Issues in Deployment Solution, an administrator tries to import a known working driver named NIC\_Intel\_C8121.CAB, but the Driver Manager stalls and becomes non-responsive after 5 minutes.

What is the cause of the program stalling?

- A. Driver manifest files are too large
- B. Corrupt or missing driver manifest files
- C. CAB\\'s or EXE\\'s are not supported
- D. CAB\\'s or EXE\\'s are supported but take longer to import

Correct Answer: C

---

### QUESTION 2

Which two (2) product suite are available as separate products and are included in IT Management Suite 8.5? (select two)

- A. Asset management suite 8.5
- B. Server Monitor suite 8.5
- C. Contract management suite 8.5
- D. Software management suite 8.5
- E. Client management suite 8.5

Correct Answer: AE

---

### QUESTION 3

What is the risk to the inventory data gathered from these endpoints, if an Inventory Policy is created with the throttling period set to extend after users typically shut down computers and go home?

- A. All inventory tasks will fail because they are not scheduled
- B. All Inventory tasks will fail because they missed their scheduled time
- C. Inventory tasks will succeed because the random start time is outside the throttling period
- D. Inventory tasks will fail because they missed their random start time in the throttling period

Correct Answer: C

---



#### QUESTION 4

Which IT Management Suite 8.5 feature allows an administrator to manage client computers outside the corporate network without a virtual private network?

- A. Remote Management
- B. Cloud-enabled Management
- C. Remote Controlled Management
- D. Cloud-based Management

Correct Answer: B

---

#### QUESTION 5

Which two (2) features are unique to IT Analytics when compared to the reporting engine built into IT Management Suite 8.5? (Select two.)

- A. Creation and display of graphical reports
- B. Actionable tasks within the report results
- C. Creation of key performance indicator-based dashboards
- D. Use of parameters to filter report results
- E. Calculation and display of trend analysis within the report results

Correct Answer: AC

---

#### QUESTION 6

What must an admin create before creating a task to change a computer's domain?

- A. an automation configuration
- B. a distribute personality configuration
- C. a sysprep imaging configuration
- D. a system configuration

Correct Answer: D

---

#### QUESTION 7

Which Symantec Management Agent setting should an admin modify depending on the number?



- A. The Maintenance Windows Schedule
- B. The download new configuration interval
- C. The agent blackout schedule
- D. The delta resource membership update Schedule

Correct Answer: D

---

#### QUESTION 8

Which criteria in the Patch Remediation Center indicates that a software bulletin has completely downloaded?

- A. The number in the Applicable column equals the number in the Not Installed column
- B. The number in the updates column equals the number in the Available column
- C. The bulletin is marked as ready to install in the Patch remediation Center
- D. The severity of the bulletin has changed to unclassified

Correct Answer: B

---

#### QUESTION 9

Which two (2) endpoint management features are available in IT Management Suite 8.5? (Select two.)

- A. Asset Barcoding and Tracking
- B. Centralized Management Platform
- C. Browser Agnostic Management Interface
- D. Software License Management
- E. Filevault Encryption Management

Correct Answer: BD

---

#### QUESTION 10

Which two (2) IT Management Suite 8.5 components provide detailed information about the hardware in an organization's computer assets? (select two)

- A. Inventory Solution
- B. Asset Management Solution
- C. Deployment Solution



D. Real Time System Manager

E. Software Management Solution

Correct Answer: AB

### QUESTION 11

An asset's Status value unexpectedly changes to Retired.

What is the most likely IT Management Suite setting that would be the source of this status change, other than human error?

A. Purging Maintenance

B. Inventory to Asset Synchronization

C. CMDB Rules

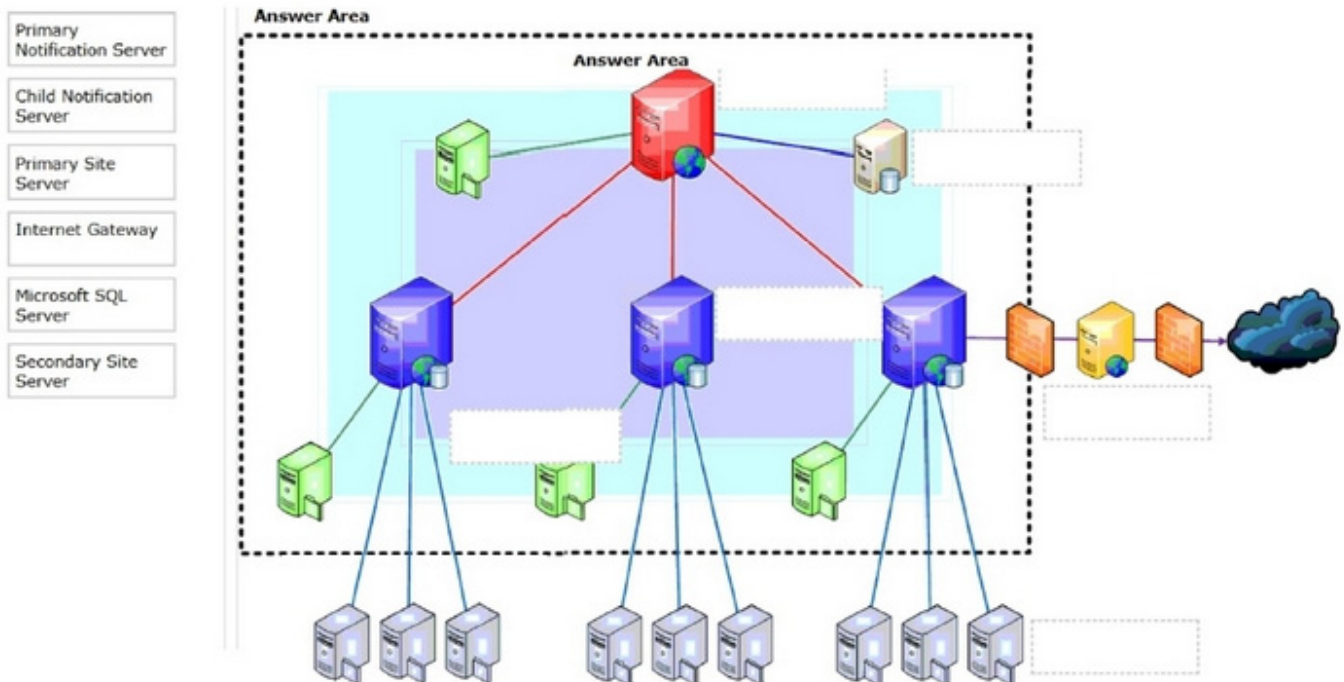
D. Resource Merge Rule

Correct Answer: D

### QUESTION 12

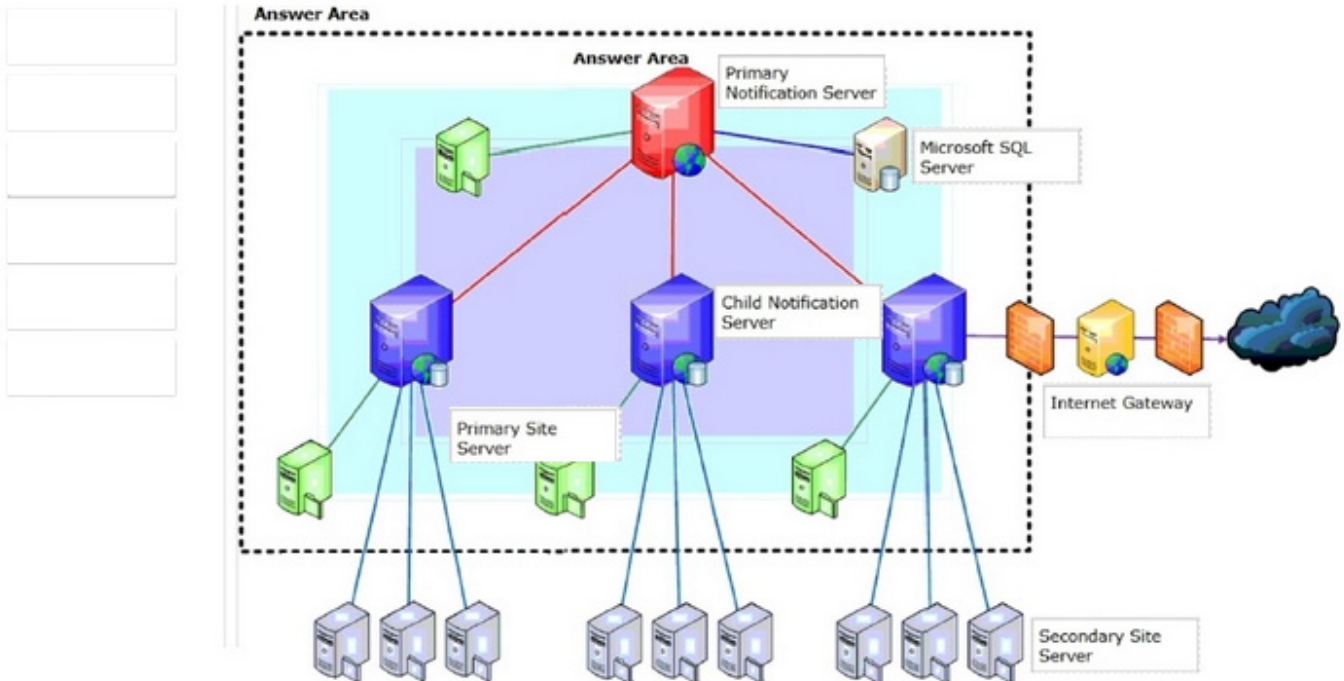
Where should an administrator place the IT Management Suite 8.5 solution components in this diagram? Drag and drop the component name to the appropriate component location in the diagram.

Select and Place:





Correct Answer:



### QUESTION 13

Which two (2) default security roles allow a user to create and import software resources in IT Management Suite 8.5? (Select two)

- A. Software Portal Administrators
- B. Symantec Administrators
- C. Symantec Supervisors
- D. Symantec Software Librarian
- E. Symantec Level 2 Workers

Correct Answer: DE

### QUESTION 14

Which item, in addition to Product Name and Version, must be specified by an administrator to minimize duplication of data and minimize processing on the Notification Server when manually adding a software resource to the Software Catalog?

- A. Platform



B. Software Product

C. Manufacturer

D. Language

Correct Answer: C

---

#### QUESTION 15

What is the maximum number of computers that could be adequately managed for an "on- box" installation of the Microsoft SQL Server with Notification Server

A. 10,000

B. 7,500

C. 12,500

D. 5,000

Correct Answer: D

[Latest 250-447 Dumps](#)

[250-447 VCE Dumps](#)

[250-447 Study Guide](#)