

**100%** Money Back  
**Guarantee**

**Vendor:** Veritas

**Exam Code:** 250-403

**Exam Name:** Administration of Symantec Management Platform 7.1

**Version:** Demo

## Topic 1, Volume A

### QUESTION NO: 1

What defines the link between user and computer resources?

- A. Resource Association
- B. Resource Data Class
- C. Resource Type
- D. Resource Link

**Answer: A**

**Explanation:**

### QUESTION NO: 2

What must an administrator do to edit a sample task?

- A. clone the sample task and edit the original task
- B. right-click and select the task's properties
- C. clone the source folder of the sample
- D. clone the sample task and edit the clone

**Answer: D**

**Explanation:**

### QUESTION NO: 3

A Symantec Management Platform 7.1 administrator attempts to discover all network resources using the ping function, and none are found. After conferring with the network administrator, it is determined that ping is blocked on all network devices for security purposes. Which other protocol can the administrator use to discover network devices using Network Discovery?

- A. CDP
- B. HIP
- C. ARP
- D. RIP

**Answer: C**

**Explanation:**

**QUESTION NO: 4**

Which Symantec Management Platform component initiates policy-based communication?

- A. Notification Server
- B. Symantec Management Agent
- C. Configuration Management Database (CMDB)
- D. Symantec Management Console

**Answer: B**

**Explanation:**

**QUESTION NO: 5**

Which Symantec Management Platform component processes data sent by the Altiris Agent and stores it in the Configuration Management Database?

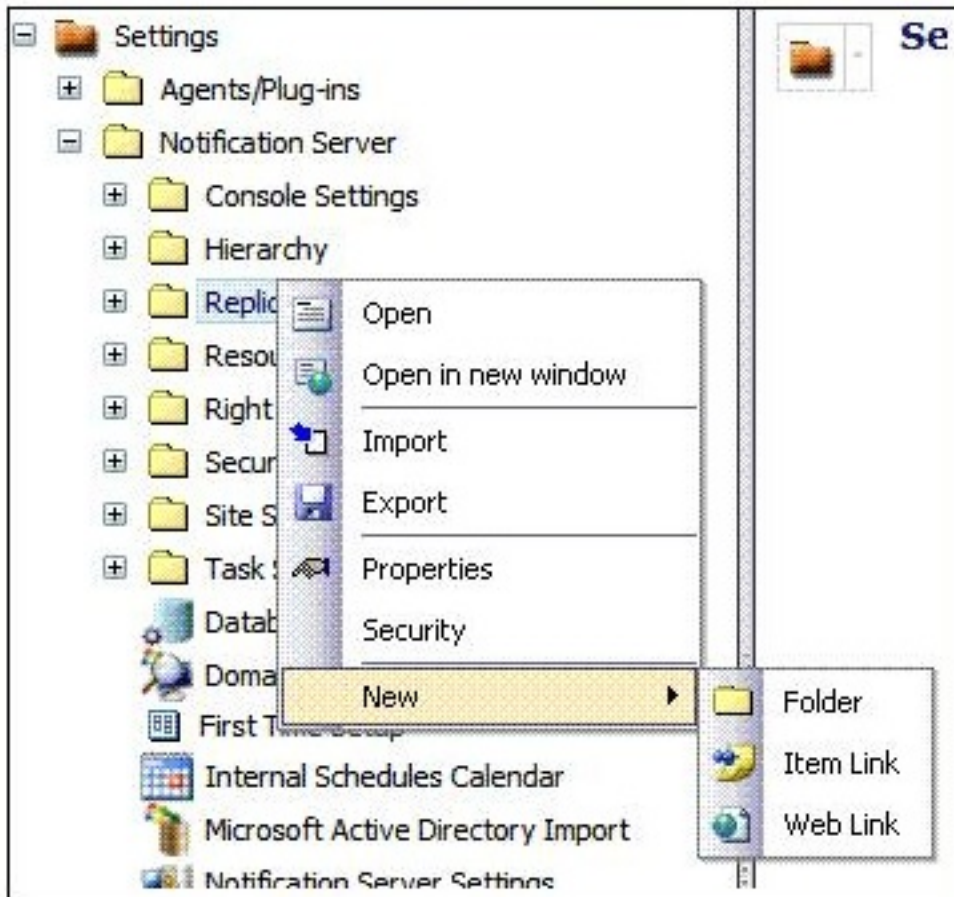
- A. Symantec Management Console
- B. Software Management Framework
- C. Notification Server
- D. Site Services

**Answer: C**

**Explanation:**

**QUESTION NO: 6**

Refer to the Exhibit.



An administrator is attempting to set up a replication rule. When the administrator right-clicks the replication folder, the menu in the exhibit appears. What does the administrator need to do to create a replication rule?

- A. enable Replication
- B. access one of the Replication subfolders
- C. access the resource and select Replicate Now
- D. create a subfolder and access it there

**Answer: B**

**Explanation:**

**QUESTION NO: 7**

Which two tabs are used to modify security roles in the Symantec Management Console? (Select two.)

- A. Permissions
- B. Privileges
- C. Rights

- D. Security
- E. Membership

**Answer: B,E**

**Explanation:**

**QUESTION NO: 8**

Which statement is true about the Default Shared Schedules shipping with Notification Server?

- A. They cannot be deleted.
- B. They cannot be modified.
- C. They can override maintenance windows.
- D. They cannot be disabled.

**Answer: A**

**Explanation:**

**QUESTION NO: 9**

If installation of the Package Service on the Site Server is forgotten, what is the impact on a new hierarchy implementation?

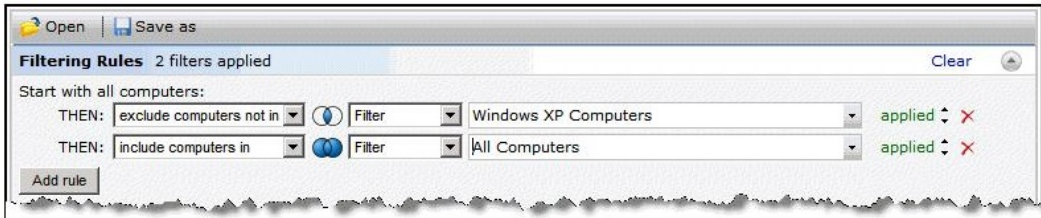
- A. Replication performance is degraded.
- B. Data replication stops.
- C. Hierarchy installation is denied.
- D. Hierarchy replication switches to HTTP.

**Answer: C**

**Explanation:**

**QUESTION NO: 10**

Refer to the Exhibit.



A target has been created with two rules: 1) 'exclude computers not in' filter Windows XP Computers, and 2) 'include computers in' filter All Computers. There are 150 computers in the Windows XP Computers filter. There are 200 computers in the All Computers filter. How many computers will be in the target?

- A. 50
- B. 150
- C. 200
- D. 350

**Answer: C**

**Explanation:**

#### QUESTION NO: 11

Refer to the Exhibit.

#### Symantec Management Server Error

An error has occurred that prevents the Symantec Management Console displaying correctly.

If this page is shown in place of a page or web part in the Symantec Management Console, navigate back to the page using the menu or tree and continue working. If the problem persists, see your local network administrator.

If this page is shown in place of the Symantec Management Console, one of the following could be the cause:

- The "Altiris Service" service is not running. Start this service on the server and reload the console.

After a password change on the Application Identity account, the administrator of a Symantec Management Platform 7.1 (SMP) server sees this error. Which action resolves the problem?

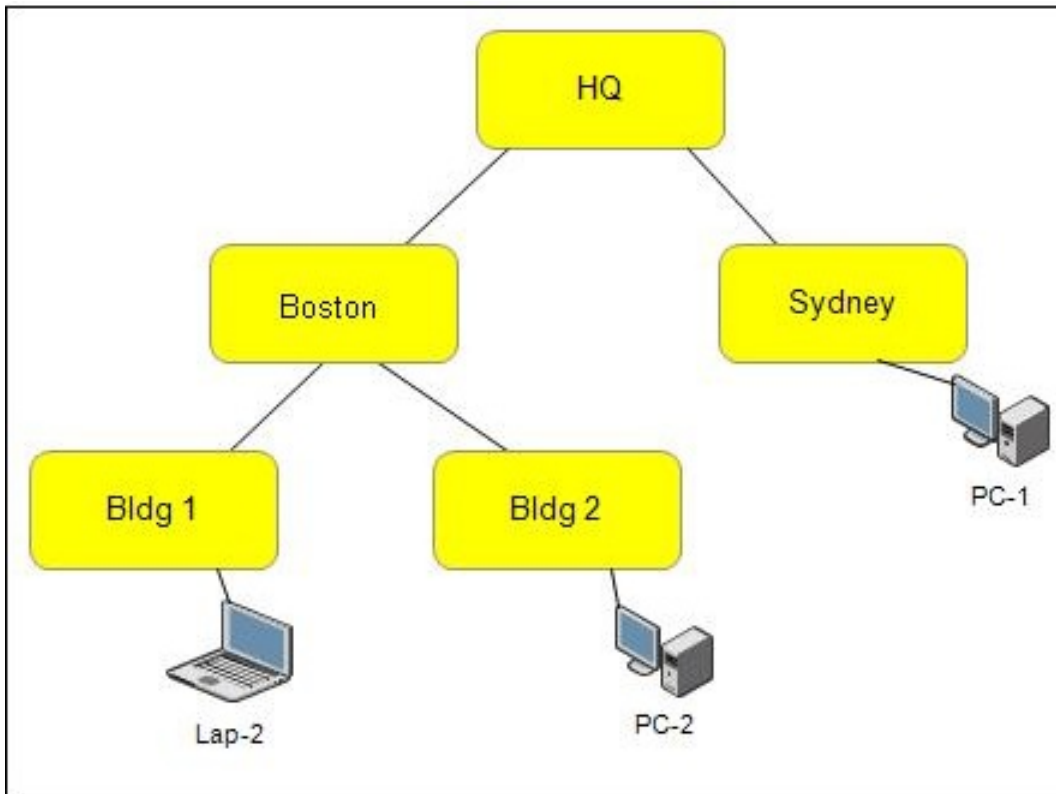
- A. run `sc.exe config "AeXSvc" password= (password)`
- B. run a repair of SMP through the Symantec Installation Manager
- C. change the password by changing the database setting options in the SMP console
- D. run `AeXConfig.exe /svcid user:(user name) password:(password)`

**Answer: D**

**Explanation:**

**QUESTION NO: 12**

Refer to the Exhibit.



There is one Notification Server at HQ that manages all desktops and laptops throughout the WAN. What should be configured to reduce processor load on the Notification Server and move network intensive services closer to their points of distribution?

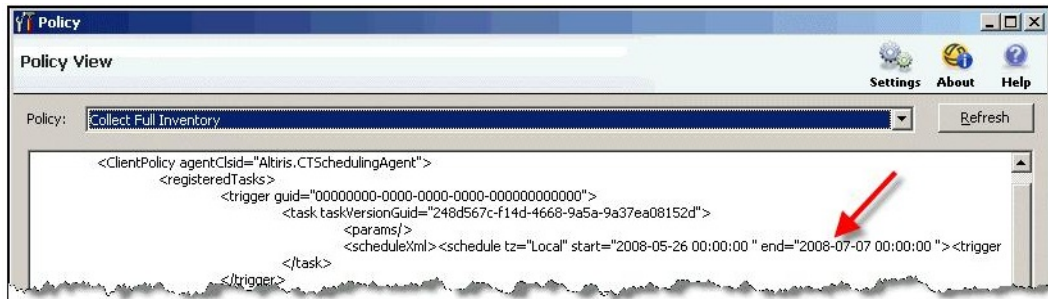
- A. Organizational Units
- B. Replication Management
- C. Site Management
- D. Security Sites

**Answer: C**

**Explanation:**

**QUESTION NO: 13**

Refer to the Exhibit.



An administrator has cloned a policy and set a schedule for the policy to run at 9:00 A.M. every day. When the policy does not run as expected on a client computer, the administrator reviews the policy's XML and finds that there is an end date set for a date in the past. What should the administrator do to correct this policy?

- A. export the policy, edit and correct the XML, and import the policy
- B. create an automation policy that updates the end date in all solution policies
- C. edit the end date field for the affected row in the vPolicy database view
- D. clear the end date option in the policy's advanced options

**Answer: D**

**Explanation:**

#### QUESTION NO: 14

Which two methods can an administrator use to create tasks? (Select two.)

- A. clone an existing task
- B. clone a task report
- C. right-click a reports folder and select New -> Task
- D. right-click a Jobs and Tasks Portal folder and select New -> Task
- E. clone an existing patch

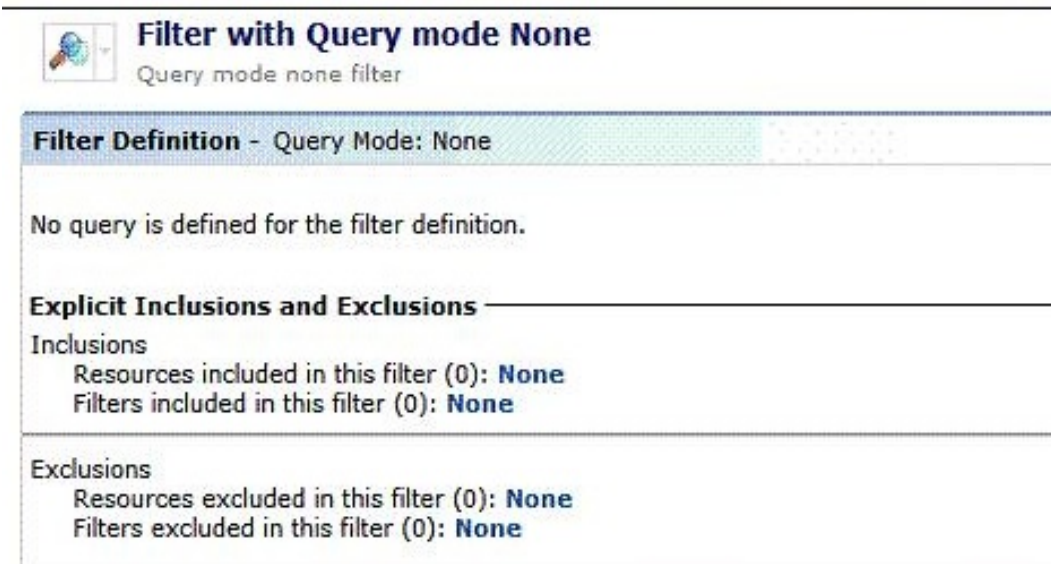
**Answer: A,D**

**Explanation:**

#### QUESTION NO: 15

Refer to the Exhibit.





**Filter with Query mode None**  
Query mode none filter

**Filter Definition - Query Mode: None**

No query is defined for the filter definition.

**Explicit Inclusions and Exclusions**

**Inclusions**  
Resources included in this filter (0): **None**  
Filters included in this filter (0): **None**

**Exclusions**  
Resources excluded in this filter (0): **None**  
Filters excluded in this filter (0): **None**

How can an administrator modify the filter so that it shows all Windows XP workstations ?

- A. by adding 'Windows XP Computers' to the Resources included in this filter
- B. by adding 'Windows XP Computers' to the Filters included in this filter
- C. by adding 'Non Windows XP Computers' to the Filters excluded in this filter
- D. by adding 'Non Windows XP Computers' to the Resources excluded in this filter

**Answer: B**

**Explanation:**

#### QUESTION NO: 16

Two administrators run the same report that displays Windows XP SP1 workstations imported from Active Directory. The North America Symantec Administrator returns 2,500 workstations. The Marketing Manager returns 500 workstations. When they compare the results, they find that there is an overlap of 100 workstations. Why is there an overlap in the reports?

- A. Because the workstations belong to multiple organizational groups in same organizationalview.
- B. Because the workstations belong to organizational groups in separate organizational views
- C. Because of workstation security privilege intersection
- D. Because of workstation security role filters

**Answer: B**

**Explanation:**

**QUESTION NO: 17**

Which statement describes the relationship between Site Server and Notification Server?

- A.** Site Server assists Notification Server by providing packages and tasks to the Altiris Agent.
- B.** Site Server sends information, events, and data from the Inventory Rule Agent to Notification Server.
- C.** Site Server assists Notification Server by running reports.
- D.** Site Server takes over all functions for Notification Server.

**Answer: A**

**Explanation:**

**QUESTION NO: 18**

Refer to the Exhibit.



**Resource History**  
Configure resource data class and association history.

**Resource Data History** **Resource Association History**

Resource association history can be configured per resource association type. Select the checkboxes to enable history for associations.

**Internal/System**

**Resource Associations**

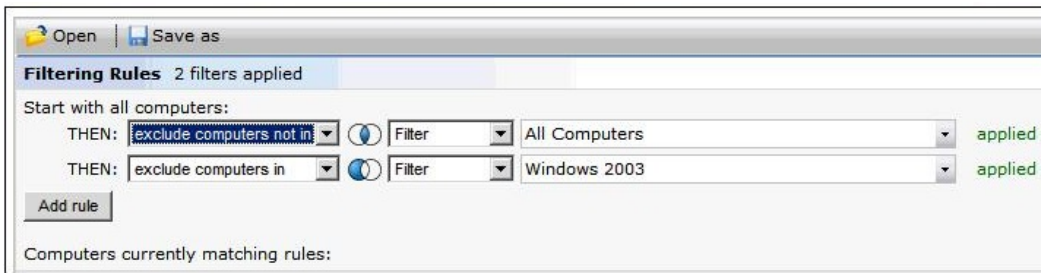
Association	Keep History Duration
<input checked="" type="checkbox"/> Association	
<input checked="" type="checkbox"/> Asset's Status	2 Months

An administrator has set up the Resource Association History within Purging maintenance. No other Purging maintenance settings are enabled. If a computer resource were retired three months ago, what will the status of this resource be in this scenario?

- A.** The resource will be removed after two months.
- B.** The resource will no longer be retired.
- C.** The resource will still be retired.
- D.** The resource will have an unknown status.

**Answer: C**

**Explanation:**

**QUESTION NO: 19**

The All Computers filter contains the following computers: WinXP1, WinXP2, and Win2003. The Windows 2003 filter contains the Win2003 computer. What is contained within the resultant target?

- A. nothing
- B. Win2003 only
- C. WinXP1 and WinXP2 only
- D. WinXP1, WinXP2, and Win2003

**Answer: C**

**Explanation:**

**QUESTION NO: 20**

What can the administrator use to have resources assigned to specific sites without administrative intervention and as they register with the Notification Server?

- A. Automation policy
- B. Active Directory import policy
- C. Inventory policy
- D. Custom Inventory policy

**Answer: A**

**Explanation:**

**QUESTION NO: 21**

A named resource target contains 50 computers in the Sales Department. Several policies and tasks are applied to this target. An administrator modifies one of these policies by changing this target so that the policy now applies to 25 computers in the Engineering Department. How are the

- A. Only the policy that the administrator changed is affected; all others only apply to the 50 computers in the Sales Department.
- B. Only the policies and tasks that the administrator created are affected and apply to the 25 computers in the Engineering Department.
- C. Every policy and task that applies to the target now applies to 75 computers in both the Sales and Engineering Departments.
- D. Every policy and task that applies to the target now only applies to the 25 computers in the Engineering Department.

**Answer: D**

**Explanation:**

**QUESTION NO: 22**

Which feature characterizes the centralized management model?

- A. A single IT management team
- B. Language barriers between sites
- C. A large company with subsidiaries
- D. Several data centers

**Answer: B**

**Explanation:**

**QUESTION NO: 23**

An administrator wants to sequence a set of complex operations into a single job and schedule the job for a time when users are not logged in to their workstations. Which middleware component can the administrator implement to accomplish these goals?

- A. OOB Service
- B. Package Service
- C. Task Service
- D. Software Management Service

**Answer: C**

**Explanation:**

**QUESTION NO: 24**

How does the Symantec Management Console help keep reports secure and scoped?

- A. by enforcing permissions that determine which reports users can view
- B. by scoping privileges that determine which reports users can view
- C. by using report filters so that only specific report data is displayed
- D. by prompting Altiris Agents for log in credentials before viewing reports

**Answer: A**

**Explanation:**

**QUESTION NO: 25**

What determines the data classes displayed in the Resource Manager for a given resource?

- A. Resource Filter
- B. Resource Type
- C. Resource Model
- D. Resource Association

**Answer: B**

**Explanation:**

**QUESTION NO: 26**

Notification Server performance is being degraded when software packages are delivered to workstations. Which Symantec Management Platform component should the administrator implement to reduce workload on the Notification Server?

- A. OOB Service
- B. Task Service
- C. Replication Service
- D. PXE Service

**Answer: B**

**Explanation:**

**QUESTION NO: 27**

What is the minimum version of Notification Server 6.0 that can be upgraded to Symantec Management Platform 7.1?

- A. Notification Server 6.0 R3
- B. Notification Server 6.0 R6
- C. Notification Server 6.0 R11
- D. Notification Server 6.0 R13

**Answer: D**

**Explanation:**

**QUESTION NO: 28**

Which permissions do new security roles have?

- A. the same permissions as the Symantec Administrators role
- B. the same permissions as the Symantec Guests role
- C. the same permissions as the Symantec Supervisors role
- D. none

**Answer: D**

**Explanation:**

**QUESTION NO: 29**

An administrator enables the automation policy 'Managed computers with zero or more than one Agent Settings' to make sure Symantec Management Agents are receiving only one configuration policy. What else must be done to make sure this policy is effective?

- A. check Notification Server SMTP Server Settings
- B. create an Outlook scheduled task to remind the administrator to check the policy
- C. create additional Agent Settings policies
- D. enable remote report viewing

**Answer: A**

**Explanation:**

**QUESTION NO: 30**

What is achieved by increasing the configuration request interval of the Symantec Management Agent?

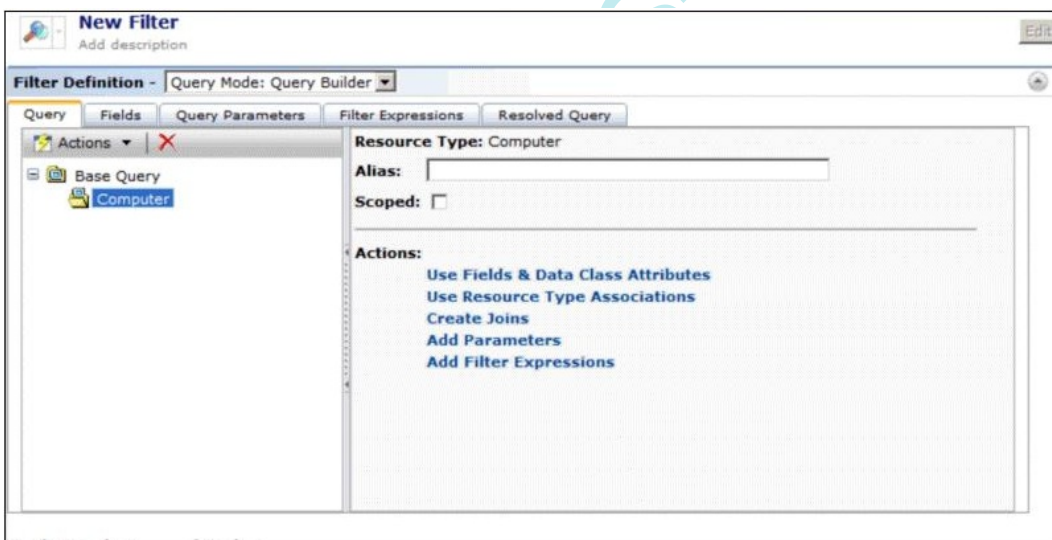
- A. The Inventory Rule agent runs less often.
- B. It reduces the processing load and network traffic on the Notification Server.
- C. It reduces the size of the database.
- D. It allows older Windows operating systems to be managed by the Symantec Management Agent.

**Answer: B**

**Explanation:**

**QUESTION NO: 31**

Refer to the Exhibit.



How can an administrator make a new filter that only shows the computers they are allowed to manage?

- A. set the privilege level in the security role manager
- B. select the Scoped option on the Query tab of the new filter
- C. add query Parameters settings to filter on user security

D. modify the Filter Expressions to filter on user security

**Answer: B**

**Explanation:**

**QUESTION NO: 32**

How long are User-based policies cached on a managed computer?

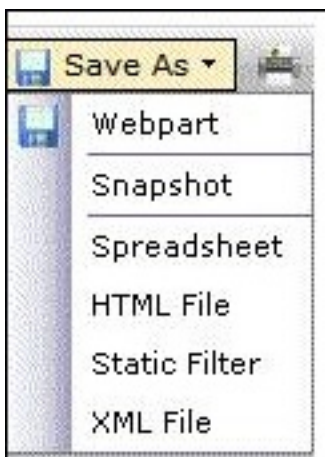
- A. one week
- B. one month
- C. two weeks
- D. two months

**Answer: A**

**Explanation:**

**QUESTION NO: 33**

Refer to the Exhibit.



The administrator created a report that returns the status of computers. Which menu item should the administrator choose to compare the status from month to month?

- A. Snapshot
- B. Web Part
- C. Static Filter
- D. XML File

**Answer: C**

**Explanation:** Get Latest & Actual IT Exam Dumps with VCE and PDF from Pass4itSure.  
<https://www.Pass4itSure.com>



**QUESTION NO: 34**

What is the Symantec recommended method for a Service Desk agent to use to install the Altiris Agent when visiting a user's cubicle?

- A. Manual Pull
- B. Manual Push
- C. Scheduled Push
- D. Agent Upgrade Policy

**Answer: A**

**Explanation:**

**QUESTION NO: 35**

Which tool must be used to modify licensing?

- A. Symantec Management Console
- B. Symantec Installation Manager
- C. Altiris Installation Manager
- D. Altiris Management Console

**Answer: B**

**Explanation:**

**QUESTION NO: 36**

Which two services can a Site Server provide? (Select two.)

- A. Package Service
- B. OAB Service
- C. Task Service
- D. AEXSVC Service
- E. Replication Service

**Answer: B,E**

**Explanation:**

**QUESTION NO: 37**

What is an organizational view?

- A. A hierarchical grouping of resources
- B. A hierarchical list of user permissions
- C. A customized set of folders, item links and web links
- D. A set of reports organized by computers and users

**Answer: C**

**Explanation:**

**QUESTION NO: 38**

How is resource scoping implemented?

- A. by including appropriate filters and organizational views and groups in a target's rules
- B. by replacing filters and organizational views and groups in a target with appropriate secured data classes
- C. by creating multiple organizational views and groups that contain appropriate subset of resources
- D. by granting permissions to appropriate organizational views and groups to a security role

**Answer: D**

**Explanation:**

**QUESTION NO: 39**

How can an administrator use the default Sample Jobs and Tasks to create a task to shut down computers?

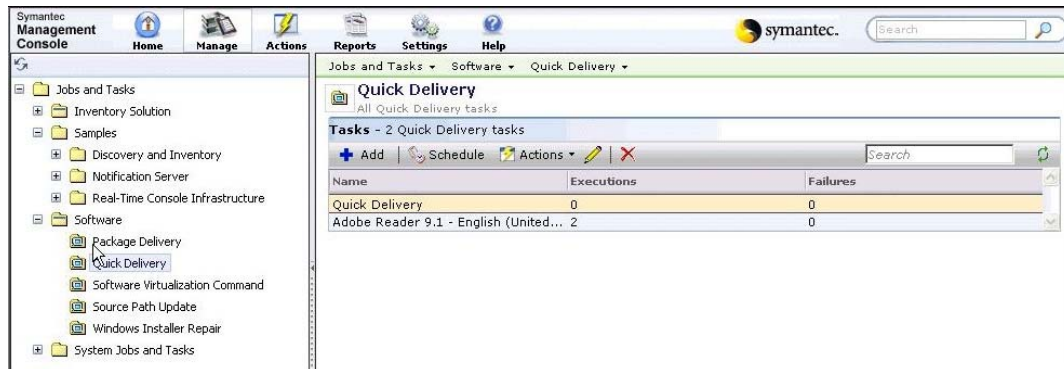
- A. edit the Restart Computer task and set the power command to Shutdown
- B. clone the Restart Computer task and set the power command to Shutdown
- C. clone the Shutdown task and set the power command to Shutdown
- D. edit the Shutdown task and set the power command to Shutdown

**Answer: A**

**Explanation:**

**QUESTION NO: 40**

Refer to the Exhibit.



Which two methods allow the Adobe Reader 9.1 quick delivery task to be deleted? (Select two.)

- A. click the red X
- B. right-click Adobe Reader 9.1 and select Delete
- C. click Actions and Remove
- D. select Adobe Reader 9.1 and click the red X
- E. right-click Quick Delivery and select Delete

**Answer: B,D**

**Explanation:**

**QUESTION NO: 41**

The Symantec Management Console can be accessed from which of the following computer configurations?

- A. Any computer that has network connectivity and the Symantec Management Console client installed on it.
- B. Any computer that has network connectivity to the Symantec Management Platform and Internet Explorer.
- C. Only on the computer where the Symantec Management Platform is installed.
- D. Only on the computer that has Notification Server and the Symantec Management Console client installed.

**Answer: C**

**Explanation:**

**QUESTION NO: 42**

Which component contains the core service of the Symantec Management Platform?

- A. Configuration Management Database (CMDB)
- B. Altiris Agent
- C. Site Service
- D. Notification Server

**Answer: D**

**Explanation:**

**QUESTION NO: 43**

Which Symantec Management Platform middleware component can an administrator place in a remote WAN site to reduce bandwidth consumption and to speed up the delivery of software installation?

- A. Replication Service
- B. Notification Server
- C. Package Service
- D. Replication Server

**Answer: C**

**Explanation:**

**QUESTION NO: 44**

An organization has one Symantec Management Platform Server and four Site Servers in their environment. How many Configuration Management Databases (CMDBs) are required?

- A. 1
- B. 4
- C. 5
- D. 8

**Answer: B**

**Explanation:**

**QUESTION NO: 45**

A company has created an organizational group Human Resources (HR) and properly secured it through role and scope security. All HR computers must be in this group to prevent unauthorized access to personnel information. All HR computers run a specific application. How can the administrator automatically assign new HR computers to the HR organizational group?

- A. create a security policy
- B. create an automation policy
- C. create a user policy
- D. create a configuration policy

**Answer: B**

**Explanation:**

**QUESTION NO: 46**

Which rule must be followed when configuring a hierarchy?

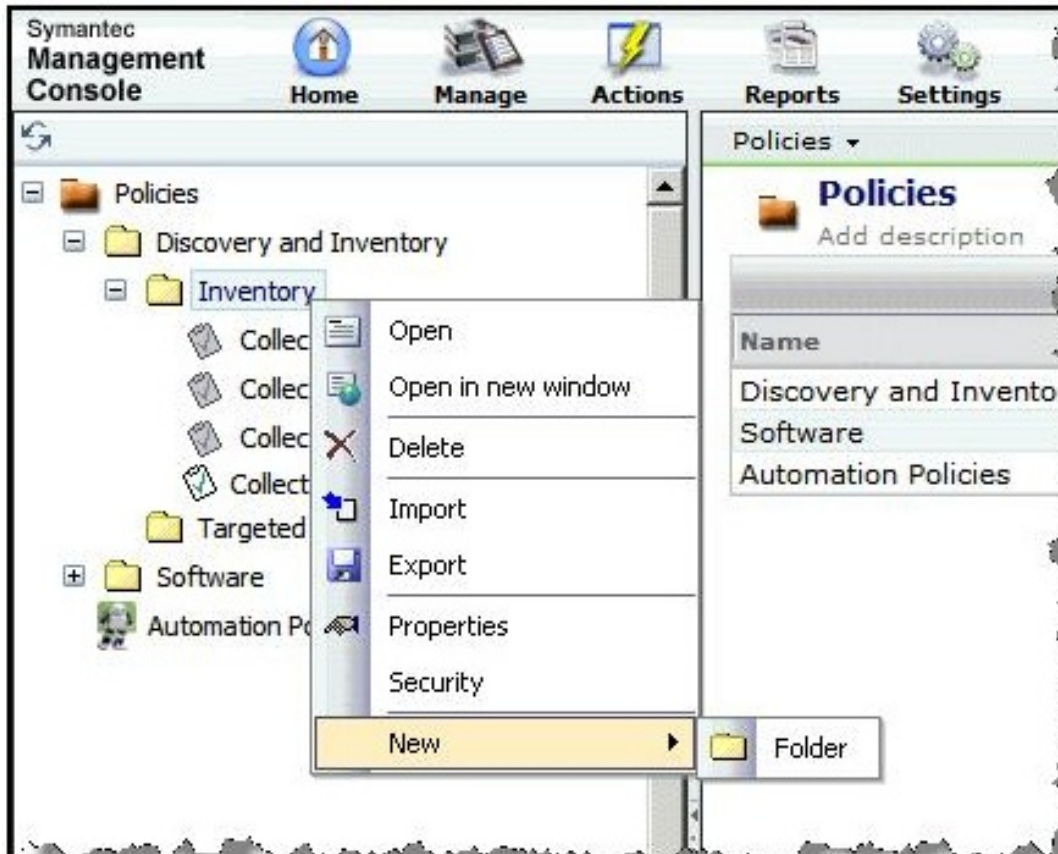
- A. Each Notification Server must have one parent; each Notification Server must have one child.
- B. Each Notification Server can have zero or one parent; each Notification Server can have zero or more children.
- C. Each Notification Server can have zero or one parent; each Notification Server can have zero or one child.
- D. Each Notification Server can have zero or more parents; each Notification Server can have zero or one child.

**Answer: B**

**Explanation:**

**QUESTION NO: 47**

Refer to the Exhibit.



An administrator is unable to create a new policy by right-clicking on a policy folder. How can the administrator create a new policy in this folder?

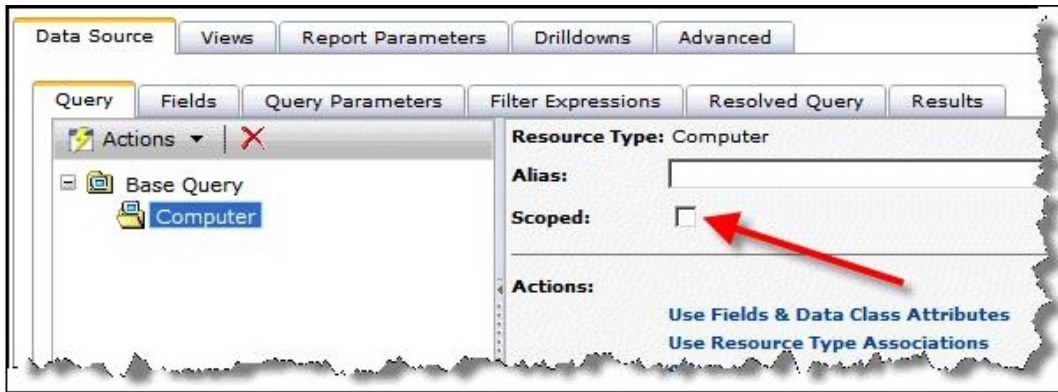
- A. change the Create Item property on the folder, then right-click the folder
- B. create a new sub-folder within the folder, then right-click the sub-folder
- C. configure the solution that owns this folder, then right-click the folder
- D. right-click a policy already contained in the folder and select Clone

**Answer: D**

**Explanation:**

**QUESTION NO: 48**

Refer to the Exhibit.



What is the effect of setting the scoped option when building a report query?

- A. The report results will be limited to the resources that the user has permissions to view.
- B. The users will be unable to bring up the Resource Manager by right-clicking on a row in the report results.
- C. The available data classes will be limited to those that the user has permissions to view.
- D. The users will be unable to drill-down to lower levels when viewing the report results.

**Answer: A**

**Explanation:**

**QUESTION NO: 49**

What is important for an administrator to consider when configuring a hierarchy?

- A. Notification Servers configured in a hierarchy must reside on the same subnet.
- B. HTTPS traffic is required between Notification Servers configured in a hierarchy.
- C. A Site Server is NOT allowed on the same subnet as a Notification Server configured in a hierarchy.
- D. There must be sufficient bandwidth between Notification Servers to support package and data replication.

**Answer: D**

**Explanation:**

**QUESTION NO: 50**

Which tab in the Query Builder allows the user to view the filter source statements?

- A. Parameter Query
- B. Filtered Query
- C. Resolved Query
- D. Field Query

**Answer: C**

**Explanation:**

**QUESTION NO: 51**

The IT Department has been experiencing frequent turnover requiring administrators to modify security role membership on an individual user basis. An administrator wants to take advantage of membership assignments established when new users are created in the network environment and connect them to security roles. Which resource can be used in the Membership tab to allow user assignments to be managed independently of the Security Role Manager?

- A. Active Directory Security groups
- B. Active Directory organizational units
- C. Altiris Security Users
- D. Altiris Security Groups

**Answer: A**

**Explanation:**

**QUESTION NO: 52**

Which two objects automatically group resources based on their specific characteristics? (Select two.)

- A. static filters
- B. dynamic targets
- C. automation filters
- D. static targets
- E. dynamic filters

**Answer: B,E**

**Explanation:**



**QUESTION NO: 53**

---

Which component enables users to view data from the Configuration Management Database (CMDB)?

- A. Log Viewer
- B. Reports
- C. Notification Server
- D. Software Management Framework

**Answer: B**

**Explanation:**

**QUESTION NO: 54**

A manager is attempting to run a report that identifies users who have Microsoft Office and Adobe software installed, but the report fails to run. What is the first thing the administrator should do?

- A. check the report for errors
- B. check the manager's permissions
- C. remove security from the report
- D. clone and modify the report

**Answer: B**

**Explanation:**

**QUESTION NO: 55**

What are two ways that permissions are set within the Security Role Manager? (Select two.)

- A. security role membership
- B. NT rights assignment
- C. inheritance
- D. explicitly granted
- E. domain membership

**Answer: C,D**

**Explanation:**

**QUESTION NO: 56**

Which organizational view shows all resources in the Configuration Management Database?

- A. A custom organizational view
- B. The Active Directory Domain organizational view
- C. The Default organizational view
- D. The Asset organizational view

**Answer: B**

**Explanation:**

**QUESTION NO: 57**

What is the first place to start troubleshooting issues with the Symantec Management Platform?

- A. Windows Event Viewer
- B. The Altiris Log Viewer
- C. The Altiris Profiler
- D. Perfmon

**Answer: D**

**Explanation:**

**QUESTION NO: 58**

Which two settings in the Targeted Agent Settings page are most likely to negatively affect server performance if configured incorrectly? (Select two.)

- A. Download new configuration every:
- B. Compress events over:
- C. Allow Altiris Agents to use multicast for downloading packages
- D. Enable tickle on Altiris Agents
- E. Disable communication at startup and after blockouts for up to:

**Answer: A,B**

**Explanation:**

**QUESTION NO: 59**

Users in a company are not assigned a permanent workstation, but they can work on any available computer. One user requires the use of a particular software application. The administrator has created a policy to install this software. How should the administrator configure the policy so that the software is installed on computers where this user logs on?

- A. apply the policy to a target containing an appropriate user resource
- B. apply the policy to a target containing a filter that selects computers by primary user
- C. set the advanced options on the policy to run only when a user is logged on to the computer
- D. add a schedule to the policy for the hours when the user is most likely to be logged on

**Answer: A**

**Explanation:**

**QUESTION NO: 60**

Which version of .NET is required to install the Symantec Management Platform 7.1?

- A. 1.1
- B. 3.0
- C. 3.5
- D. 3.5 SP1

**Answer: D**

**Explanation:**

**QUESTION NO: 61**

Which action does the Client Task Sub Agent perform?

- A. receives job and task information
- B. multicasts tasks to other Client Task Agents
- C. sends an IP tickle packet
- D. retrieves status information from the Task Server

**Answer: A**

**Explanation:**

**QUESTION NO: 62**

Which menu option should be selected to find the Jobs and Tasks Portal?

- A. Manage
- B. Home
- C. Settings
- D. Actions

**Answer: A**

**Explanation:**

**QUESTION NO: 63**

What is the first point of contact for the Altiris Agent?

- A. Notification Server
- B. Symantec Management Console
- C. Package Service
- D. Task Service

**Answer: A**

**Explanation:**

**QUESTION NO: 64**

What can an organizational view contain?

- A. only one organizational group
- B. one or more organizational groups
- C. computers
- D. users

**Answer: B**

**Explanation:**

**QUESTION NO: 65**

Refer to the Exhibit.



Given the scenario, how many automation policies are needed to populate the organizational groups under the world-wide administration organizational view?

- A. 1
- B. 2
- C. 4
- D. 5

**Answer: C**

**Explanation:**

**QUESTION NO: 66**

Which rule type replicates custom reports between two Notification Servers?

- A. Events
- B. Items
- C. Resources
- D. Security

**Answer: B**

**Explanation:**

**QUESTION NO: 67**

Why would an administrator want to save a report as a web part?

- A. to save the results for later reference
- B. to use in a resource target
- C. to use in a portal page
- D. to be able to e-mail the results

**Answer: C**

**Explanation:**

**QUESTION NO: 68**

An administrator's network contains both Windows domain computers and Windows workgroup computers. What should the administrator perform to discover these computers?

- A. a Resource discovery using the Domain Membership option
- B. a Resource discovery using the Domain Browse List option
- C. an Active Directory import with the directory synchronization schedule enabled
- D. an Active Directory import with the directory synchronization schedule disabled

**Answer: B**

**Explanation:**

**QUESTION NO: 69**

An administrator has joined a computer to a domain managed by Microsoft Active Directory. Which two items must the administrator enable to automate the installation of the Altiris Agent on this computer? (Select two.)

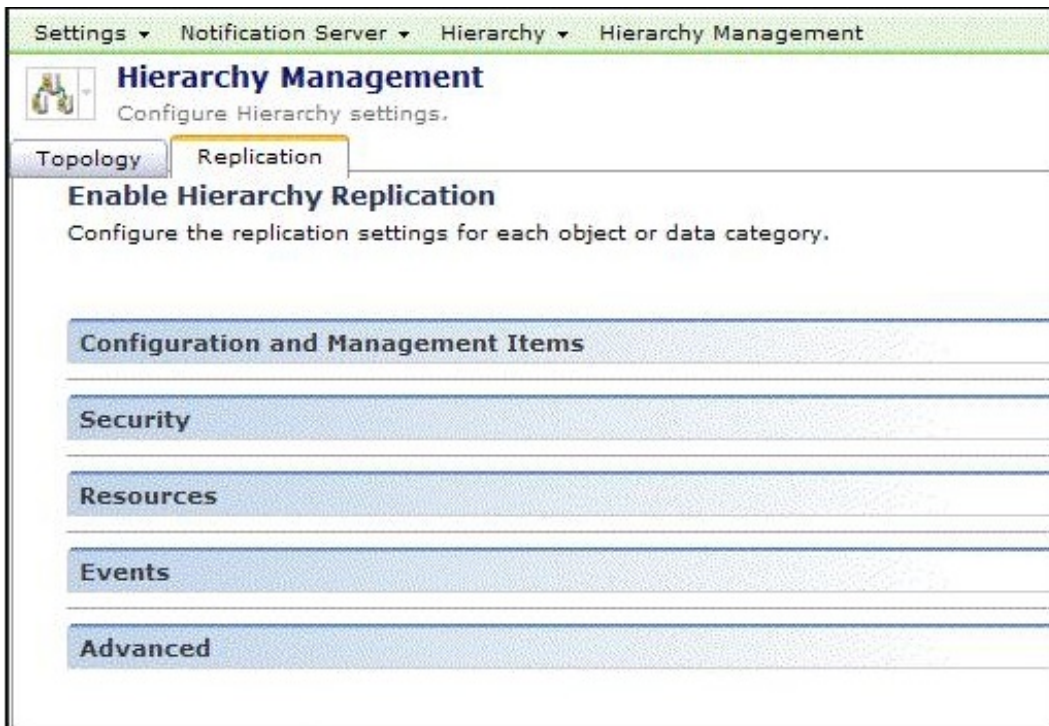
- A. Altiris Agent for Windows - Install policy
- B. Windows Computers with no Altiris Agent installed filter
- C. Microsoft Active Directory import rule
- D. Windows Computers with no Altiris Agent installed target
- E. Scheduled Push to Computers policy

**Answer: C,E**

**Explanation:**

**QUESTION NO: 70**

Refer to the Exhibit.



The administrator needs to set up replication of several automation policies from the parent server in New York to the child server in London. What allows the administrator to set up the hierarchy to push these policies down?

- A. Configuration and Management Items
- B. Security
- C. Resources
- D. Events
- E. Advanced

**Answer: A**

**Explanation:**

#### QUESTION NO: 71

Which policies run on Notification Server and are not concerned with agent activity on managed computers?

- A. Automation policies
- B. Target-based policies
- C. User-based policies
- D. Filter-based policies

**Answer: A**

**Explanation:**

**QUESTION NO: 72**

An Administrator wants to customize the default Symantec Administrators security role for use as a new template for future console administrators. Upon selection, the options are grayed out and inaccessible. Which action should the administrator take to modify these privileges?

- A. break inheritance to parent roles
- B. take ownership of the role
- C. clone the role and modify the copy
- D. use a different credential with more permissions

**Answer: C**

**Explanation:**

**QUESTION NO: 73**

During installation of the Symantec Management Platform 7.1 (SMP), an administrator specifies an account created for SMP to be used as the Application Identity. When the administrator tries to connect to the console from their workstation they receive an Access Denied message. Why is the administrator's access denied?

- A. The account used to install is the only account in the Symantec Administrators Group.
- B. The account used during installation has NOT been added to the Domain Administrators Group.
- C. The system administrator is using an account that is not a member of the Domain Administrators Group.
- D. The console must be run from a terminal services session of the Notification Server.

**Answer: A**

**Explanation:**

**QUESTION NO: 74**

Which Task Management component sends the XML containing the job or task to targeted computers?



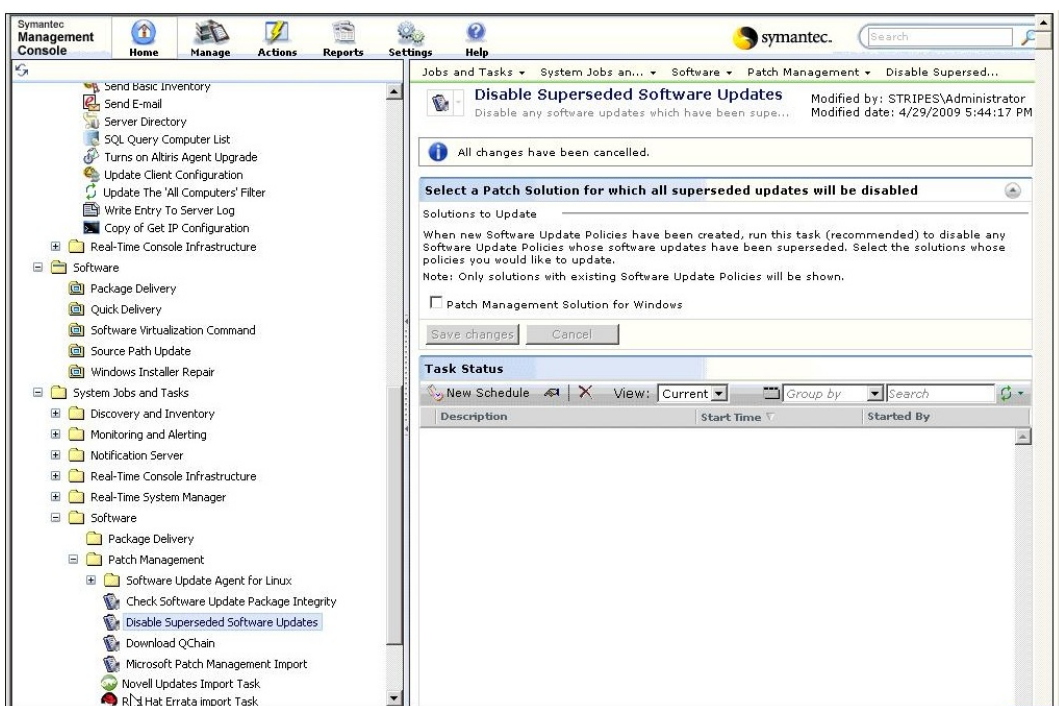
- A. Task Service
- B. Data Loader
- C. Tickle Service
- D. Client Task Agent

**Answer: A**

**Explanation:**

**QUESTION NO: 75**

Refer to the Exhibit.



The patch administrator needs to make sure that all superseded patches are disabled in the environment. Which menu option should the administrator use to configure the task for regular execution?

- A. Task Title right-click menu
- B. Save Changes
- C. New Schedule
- D. View

**Answer: C**

**Explanation:**

**QUESTION NO: 76**

Refer to the Exhibit.



An administrator wants to apply a policy to a target containing all computers in the Accounting organizational group and three users in the Marketing organizational group. Which item in the Apply To menu should the administrator use?

- A. Quick Apply
- B. Computers
- C. Users
- D. Resources

**Answer: D**

**Explanation:**

**QUESTION NO: 77**

What is a properly configured middleware computer known as?

- A. Task Service
- B. Subnet Server
- C. Site Server
- D. Package Server

**Answer: C**

**Explanation:**

**QUESTION NO: 78**

An administrator is working on a child Notification Server (NS) in a Hierarchy. All default filters have been replicated from the Parent NS. How can the administrator isolate all Windows 2008 package servers?

- A. modify the replicated filter so that it only includes Windows 2008 based servers
- B. create a linked hierarchy filter in hierarchy so that it only includes Windows 2008 based servers
- C. clone the 'Package Servers Installed' replicated filter and modify it so it only includes Windows 2008 based servers
- D. modify the Windows 2008 server's filter

**Answer: C**

**Explanation:**

**QUESTION NO: 79**

What is a function of the Symantec Installation Manager readiness check?

- A. to scan the computers for Windows updates
- B. to remediate minimum system requirements automatically
- C. to scan for minimum system requirements
- D. to scan for dependencies between selected solutions

**Answer: C**

**Explanation:**

**QUESTION NO: 80**

Refer to the Exhibit.

To Read the [Whole Q&As](#), please purchase the [Complete Version](#) from [Our website](#).

# Trying our product !

- ★ **100%** Guaranteed Success
- ★ **100%** Money Back Guarantee
- ★ **365 Days** Free Update
- ★ **Instant Download** After Purchase
- ★ **24x7** Customer Support
- ★ Average **99.9%** Success Rate
- ★ More than **69,000** Satisfied Customers Worldwide
- ★ Multi-Platform capabilities - **Windows, Mac, Android, iPhone, iPod, iPad, Kindle**

## Need Help

Please provide as much detail as possible so we can best assist you.

To update a previously submitted ticket:



 <b>One Year Free Update</b> <p>Free update is available within One Year after your purchase. After One Year, you will get 50% discounts for updating. And we are proud to boast a 24/7 efficient Customer Support system via Email.</p>	 <b>Money Back Guarantee</b> <p>To ensure that you are spending on quality products, we provide 100% money back guarantee for 30 days from the date of purchase.</p>	 <b>Security &amp; Privacy</b> <p>We respect customer privacy. We use McAfee's security service to provide you with utmost security for your personal information &amp; peace of mind.</p>
---	---	--

## Guarantee & Policy | Privacy & Policy | Terms & Conditions

Any charges made through this site will appear as Global Simulators Limited.

All trademarks are the property of their respective owners.