



# 200-105<sup>Q&As</sup>

Interconnecting Cisco Networking Devices Part 2 (ICND2)

## Pass Cisco 200-105 Exam with 100% Guarantee

Free Download Real Questions & Answers **PDF** and **VCE** file from:

<https://www.pass4itsure.com/200-105.html>

100% Passing Guarantee  
100% Money Back Assurance

Following Questions and Answers are all new published by Cisco  
Official Exam Center

- ⚙ **Instant Download** After Purchase
- ⚙ **100% Money Back** Guarantee
- ⚙ **365 Days** Free Update
- ⚙ **800,000+** Satisfied Customers





## QUESTION 1

### Instructions

This item contains several questions that you must answer. You can view these questions by clicking on the corresponding button to the left. Changing questions can be accomplished by clicking the numbers to the left of each question. In

order to complete the questions, you will need to refer to the topology.

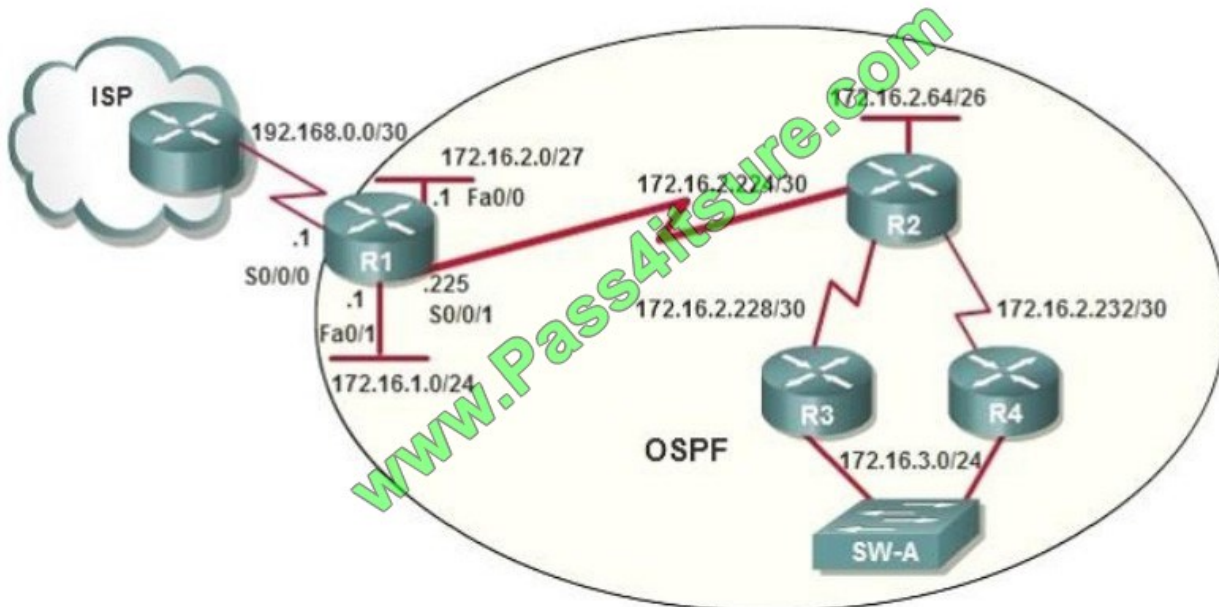
To gain access to the topology, click on the topology button at the bottom of the screen. When you have finished viewing the topology, you can return to your questions by clicking on the Questions button to the left.

Each of the windows can be minimized by clicking on the [-]. You can also reposition a window by dragging it by the title bar.

### Scenario

Refer to the topology. Using the information shown, answer the four questions shown on the Questions tab.

#### Topology



After the network has converged, what type of messaging, if any, occurs between R3 and R4?

- A. No messages are exchanged.
- B. Hellos are sent every 10 seconds.
- C. The full database from each router is sent every 30 seconds.
- D. The routing table from each router is sent every 60 seconds.

Correct Answer: B



HELLO messages are used to maintain adjacent neighbors so even when the network is converged, hellos are still exchanged. On broadcast and point-to-point links, the default is 10 seconds, on NBMA the default is 30 seconds.

---

## QUESTION 2

An organization is concerned that too many employees are wasting company time accessing the Internet.

Which access list statement would stop World Wide Web access for employees on the range of subnets from 172.16.8.0/24 to 172.16.11.0/24?

- A. access-list 103 deny tcp 172.16.8.0 0.0.0.3 any eq 80
- B. access-list 103 deny tcp 172.16.8.0 0.0.3.255 any eq 80
- C. access-list 103 deny http 172.16.8.0 0.0.7.255 any
- D. access-list 103 deny tcp any 172.16.8.0 0.0.3.255 eq 80
- E. access-list 103 deny tcp 172.16.8.0 0.0.11.255 any eq 80

Correct Answer: B

---

## QUESTION 3

Which statement about MPLS is true?

- A. It operates in Layer 1.
- B. It operates between Layer 2 and Layer 3.
- C. It operates in Layer 3.
- D. It operates in Layer 2.

Correct Answer: B

MPLS belongs to the family of packet-switched networks. MPLS operates at a layer that is generally considered to lie between traditional definitions of OSI Layer 2 (data link layer) and Layer 3 (network layer), and thus is often referred to as a layer 2.5 protocol.

---

## QUESTION 4

Which command do you enter to create an SVI?

- A. switch(config)#interface vlan 5
- B. switch(config)#interface FastEthernet 0/5
- C. switch(config)#interface FastEthernet 0/0.5
- D. switch(vlan)#interface svi vlan 5



Correct Answer: A

---

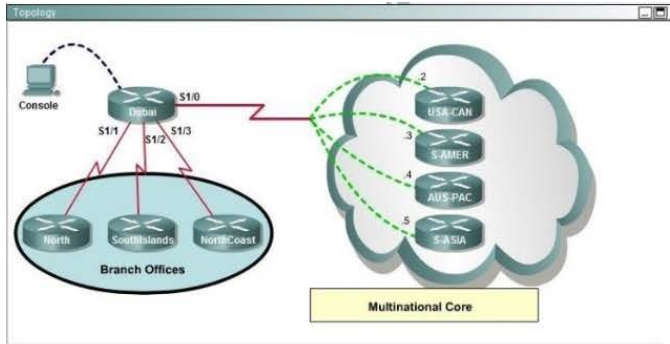
## QUESTION 5

Instructions:

Enter IOS commands on the Dubai router to verify network operation and answer for multiple-choice questions. THIS TASK DOES NOT REQUIRE DEVICE CONFIGURATION.

Click on the Console PC to gain access to the console of the router. No console or enable passwords are required.

To access the multiple-choice questions, click of the numbered boxes on the left of the top panel.



```
Dubai>

%LINK-3-UPDOWN: Interface FastEthernet0/0, changed state to administratively down
%LINK-3-UPDOWN: Interface Serial1/0, changed state to up
%LINEPROTO-5-UPDOWN: Line protocol on Interface Serial1/0, changed state to up
%LINK-3-UPDOWN: Interface Serial1/1, changed state to up
%LINEPROTO-5-UPDOWN: Line protocol on Interface Serial1/1, changed state to up
%LINK-3-UPDOWN: Interface Serial1/2, changed state to up
%LINEPROTO-5-UPDOWN: Line protocol on Interface Serial1/2, changed state to up
%LINK-3-UPDOWN: Interface Serial1/3, changed state to up
%LINEPROTO-5-UPDOWN: Line protocol on Interface Serial1/3, changed state to up
Press RETURN to get started!
Dubai>
```

```
Dubai#sh frame-relay map
Serial1/0 (up): ip 172.30.0.2 dlc 325 (0x7B,0x1CB0), dynamic,
                broadcast, status defined, active
Serial1/0 (up): ip 172.30.0.3 dlc 230 (0xEA,0x38A0), dynamic,
                broadcast, status defined, active
Serial1/0 (up): ip 172.30.0.4 dlc 694 (0x159,0x5490), dynamic,
                broadcast,, status defined, active
Serial1/0 (up): ip 172.30.0.5 dlc 387 (0x1C8,0x7080), dynamic,
                broadcast,, status defined, active
Dubai#
interface FastEthernet0/0
no ip address
shutdown
!
interface Serial1/0
ip address 172.30.0.1 255.255.255.240
encapsulation frame-relay
no fair-queue
!
interface Serial1/1
ip address 192.168.0.1 255.255.255.252
!
interface Serial1/2
ip address 192.168.0.5 255.255.255.252
encapsulation ppp
!
interface Serial1/3
ip address 192.168.0.9 255.255.255.252
encapsulation ppp
ppp authentication chap
!
router rip
version 2
network 172.30.0.0
network 192.168.0.0
no auto-summary
!
line con 0
exec-timeout 0 0
line aux 0
line vty 0 4
password Tlnet
login
!
end
```



If required, what password should be configured on the DeepSouth router in the branch office to allow a connection to be established with the MidEast router?

- A. No password is required.
- B. Enable
- C. Secret
- D. Telnet
- E. Console

Correct Answer: B

In the diagram, DeepSouth is connected to Dubai's S1/2 interface and is configured as follows: Interface Serial1/2 IP address 192.168.0.5 255.255.255.252 Encapsulation PPP; Encapsulation for this interface is PPP Check out the following Cisco Link: Here is a snip of an example: Network Diagram If Router 1 initiates a call to Router 2, Router 2 would challenge Router 1, but Router 1 would not challenge Router 2. This occurs because the ppp authentication chap calling command is configured on Router 1. This is an example of a unidirectional authentication. In this setup, the ppp chap hostname alias-r1 command is configured on Router 1. Router 1 uses "alias-r1" as its hostname for CHAP authentication instead of "r1." The Router 2 dialer map name should match Router 1's ppp chap hostname; otherwise, two B channels are established, one for each direction.





## Configurations

### Router 1

```
!  
isdn switch-type basic-5ess  
!  
hostname r1  
!  
username r2 password 0 cisco  
  
! -- Hostname of other router and shared secret  
!  
interface BRI0/0  
  ip address 20.1.1.1 255.255.255.0  
  no ip directed-broadcast  
  encapsulation ppp  
  dialer map ip 20.1.1.2 name r2 broadcast 5772222  
  dialer-group 1  
  isdn switch-type basic-5ess  
  ppp authentication chap callin  
  
! -- Authentication on incoming calls only  
  
ppp chap hostname alias-r1  
  
! -- Alternate CHAP hostname
```

Reference: [http://www.cisco.com/en/US/tech/tk713/tk507/technologies\\_configuration\\_example09186a0080094333.shtml#configuringusernamefromtheroutersname](http://www.cisco.com/en/US/tech/tk713/tk507/technologies_configuration_example09186a0080094333.shtml#configuringusernamefromtheroutersname)

## QUESTION 6

Which two values can a standard IPv6 ACL use to identify traffic? (Choose two.)

- A. UDP header
- B. TCP header



- C. source IPv6 address
- D. DSCP value for QoS
- E. destination IPv6 address

Correct Answer: CE

---

#### QUESTION 7

Which two statements about interior gateway routing protocols are true? (Choose two.)

- A. They may use the Dijkstra algorithm.
- B. They can be used to connect to another AS across the Internet as a virtual instance.
- C. They may use the Bellman-Ford algorithm.
- D. They cannot be used when two devices are connected through a firewall.
- E. They can be used to connect to the Internet backbone.

Correct Answer: AC

---

#### QUESTION 8

A network administrator needs to configure port security on a switch. Which two statements are true? (Choose two.)

- A. The network administrator can apply port security to dynamic access ports.
- B. The network administrator can apply port security to EtherChannels.
- C. When dynamic MAC address learning is enabled on an interface, the switch can learn new addresses, up to the maximum defined.
- D. The sticky learning feature allows the addition of dynamically learned addresses to the running configuration.
- E. The network administrator can configure static secure or sticky secure MAC addresses in the voice VLAN.

Correct Answer: CD

Follow these guidelines when configuring port security:

Port security can only be configured on static access ports, trunk ports, or 802.1Q tunnel ports.

A secure port cannot be a dynamic access port.

A secure port cannot be a destination port for Switched Port Analyzer (SPAN).

A secure port cannot belong to a Fast EtherChannel or Gigabit EtherChannel port group.

You cannot configure static secure or sticky secure MAC addresses on a voice VLAN.





When you enable port security on an interface that is also configured with a voice VLAN, you must set the maximum allowed secure addresses on the port to at least two. If any type of port security is enabled on the access VLAN, dynamic

port security is automatically enabled on the voice VLAN. When a voice VLAN is configured on a secure port that is also configured as a sticky secure port, all addresses seen on the voice VLAN are learned as dynamic secure addresses, and

all addresses seen on the access VLAN (to which the port belongs) are learned as sticky secure addresses.

The switch does not support port security aging of sticky secure MAC addresses.

The protect and restrict options cannot be simultaneously enabled on an interface

---

### QUESTION 9

Which two authentication methods are compatible with MLPPP on a serial interface? (Choose two.)

- A. LEAP
- B. PEAP
- C. CHAP
- D. TACACS+
- E. PAP

Correct Answer: CE

#### PPP Authentication Methods

In this part we will learn more about two authentication methods used in Authentication Phase of PPP.

PPP has two built-in security mechanisms which are Password Authentication Protocol (PAP) and Challenge Handshake Authentication Protocol (CHAP).

---

### QUESTION 10

Which three commands must you enter to create a trunk that allows VLAN 20? (Choose three.)

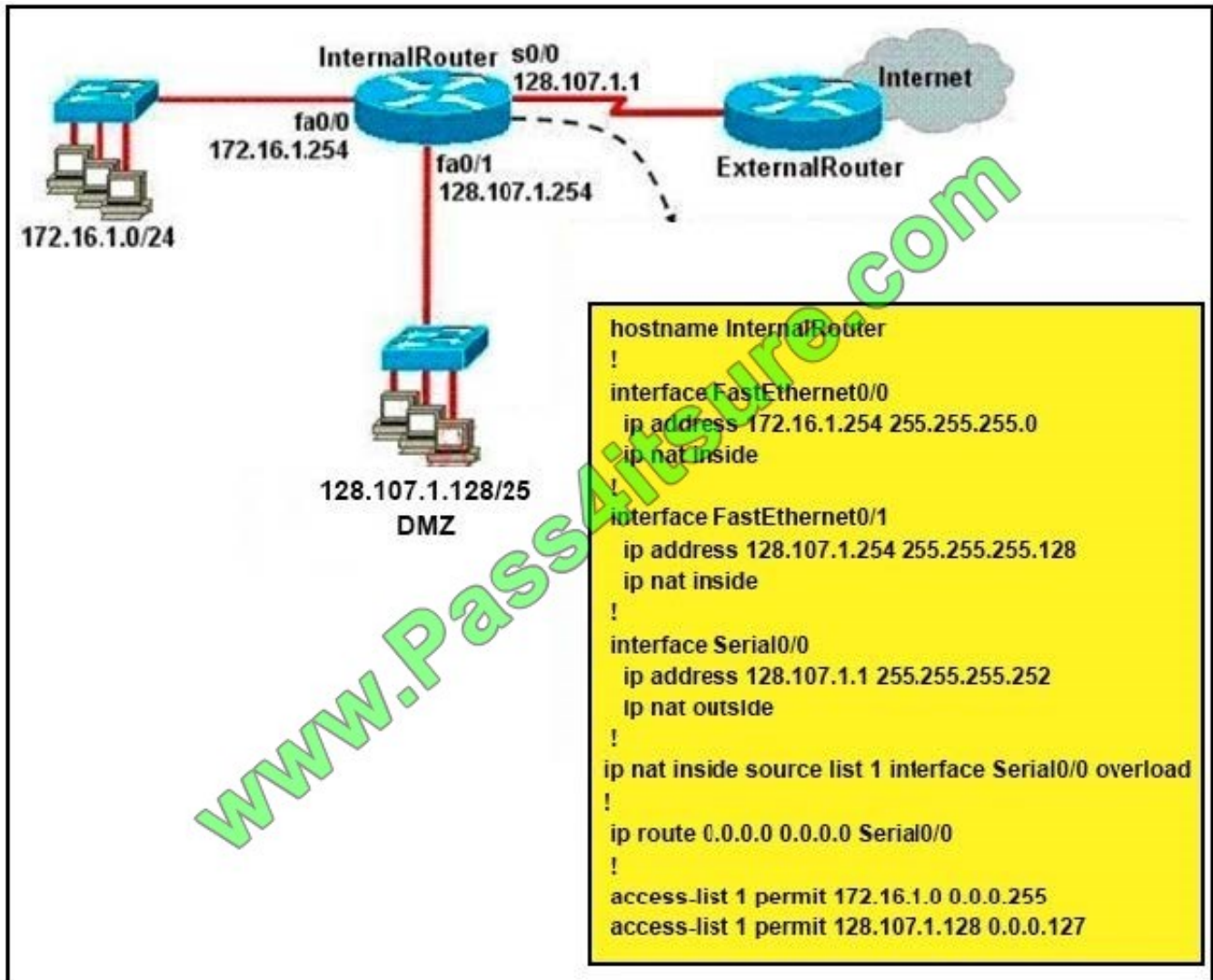
- A. Switch(config-if)#switchport mode dynamic auto
- B. Switch(config-if)#switchport mode trunk
- C. Switch(config-if)#switchport trunk allowed vlan 20
- D. Switch(config-if)#switchport mode dynamic desirable
- E. Switch(config-if)#switchport trunk encapsulation dot1q F. Switch(config-if)#switchport trunk native vlan 20

Correct Answer: BCE

---

**QUESTION 11**

Refer to the exhibit. A junior network engineer has prepared the exhibited configuration file. What two statements are true of the planned configuration for interface fa0/1? (Choose two.)



- A. The two FastEthernet interfaces will require NAT configured on two outside serial interfaces.
- B. Address translation on fa0/1 is not required for DMZ Devices to access the Internet.
- C. The fa0/1 IP address overlaps with the space used by s0/0.
- D. The fa0/1 IP address is invalid for the IP subnet on which it resides.
- E. Internet hosts may not initiate connections to DMZ Devices through the configuration that is shown.

Correct Answer: BE

**QUESTION 12**

Users have been complaining that their Frame Relay connection to the corporate site is very slow. The network administrator suspects that the link is overloaded. Based on the partial output of the Router # show frame relay pvc command shown in the graphic, which output value indicates to the local router that traffic sent to the corporate site is experiencing congestion?

**PVC Statistics for interface Serial0 (Frame Relay DTE)**

	Active	Inactive	Deleted	Static
Local	1	0	0	0
Switched	0	0	0	0
Unused	0	0	0	0

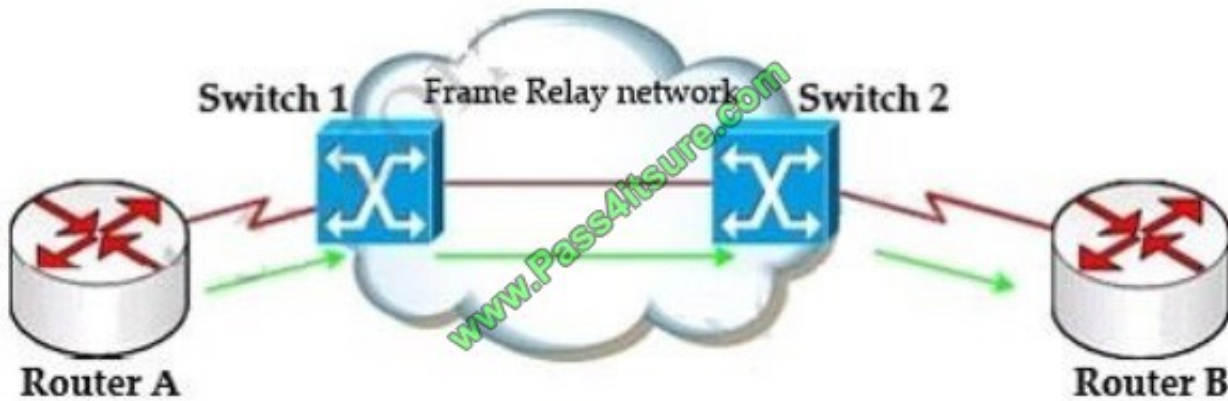
DLCI = 100, DLCI USAGE = LOCAL, PVC STATUS = ACTIVE, INTERFACE = Serial0

input pkts 1300      output pkts 1270      in bytes 22121000  
out bytes 21802000      dropped pkts 4      in FECN pkts 147  
in BECN pkts 192      out FECN pkts 259      out BECN pkts 214  
in DE pkts 0      out DE pkts 0  
out bcast pkts 107      out bcast bytes 19772  
pvc create time 00:25:50, last time pvc status changed 00:25:40

- A. DLCI=100
- B. last time PVC status changed 00:25:40
- C. in BECN packets 192
- D. in FECN packets 147
- E. in DF packets 0

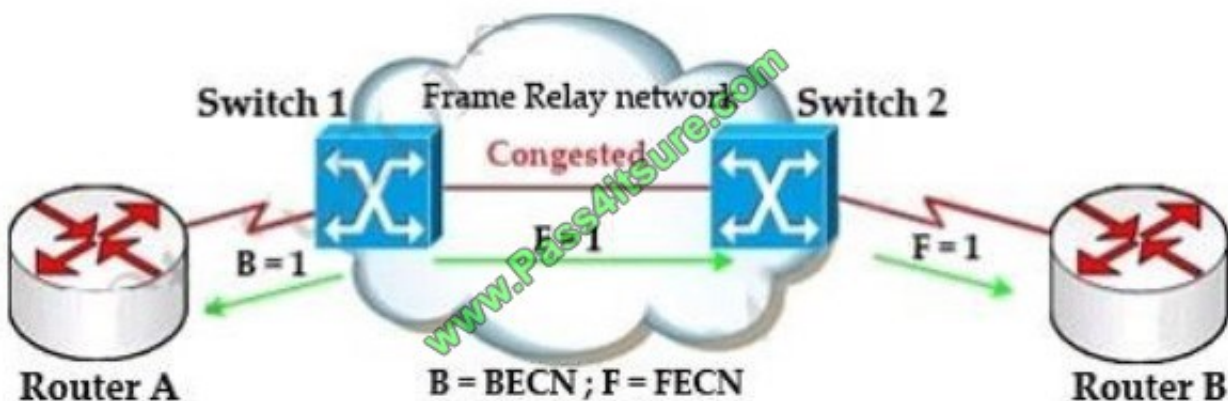
Correct Answer: C

First we should grasp the concept of BECN and FECN through an example:



Suppose Router A wants to send data to Router B through a Frame Relay network. If the network is congested, Switch 1 (a DCE device) will set the FECN bit value of that frame to 1, indicating that frame experienced congestion in the path from source to destination.

This frame is forwarded to Switch 2 and to Router B (with the FECN bit = 1). Switch 1 knows that the network is congesting so it also sends frames back to Router A with BECN bit set to 1 to inform that path through the network is congested.



In general, BECN is used on frames traveling away from the congested area to warn source devices that congestion has occurred on that path while FECN is used to alert receiving devices if the frame experiences congestion.

BECN also informs the transmitting devices to slow down the traffic a bit until the network returns to normal state.

The question asks "which output value indicates to the local router that traffic sent to the corporate site is experiencing congestion" which means it asks about the returned parameter which indicates congestion ->BECN.



To Read the [Whole Q&As](#), please purchase the [Complete Version](#) from [Our website](#).

## Try our product !

100% Guaranteed Success

100% Money Back Guarantee

365 Days Free Update

Instant Download After Purchase

24x7 Customer Support

Average 99.9% Success Rate

More than 800,000 Satisfied Customers Worldwide

Multi-Platform capabilities - Windows, Mac, Android, iPhone, iPod, iPad, Kindle

We provide exam PDF and VCE of Cisco, Microsoft, IBM, CompTIA, Oracle and other IT Certifications. You can view Vendor list of All Certification Exams offered:

<https://www.pass4itsure.com/allproducts>

## Need Help

Please provide as much detail as possible so we can best assist you.

To update a previously submitted ticket:



 <b>One Year Free Update</b> <p>Free update is available within One Year after your purchase. After One Year, you will get 50% discounts for updating. And we are proud to boast a 24/7 efficient Customer Support system via Email.</p>	 <b>Money Back Guarantee</b> <p>To ensure that you are spending on quality products, we provide 100% money back guarantee for 30 days from the date of purchase.</p>	 <b>Security &amp; Privacy</b> <p>We respect customer privacy. We use McAfee's security service to provide you with utmost security for your personal information &amp; peace of mind.</p>
---	---	--

Any charges made through this site will appear as Global Simulators Limited.

All trademarks are the property of their respective owners.

Copyright © pass4itsure, All Rights Reserved.