



1Z0-997-21^{Q&As}

Oracle Cloud Infrastructure 2021 Architect Professional

Pass Oracle 1Z0-997-21 Exam with 100% Guarantee

Free Download Real Questions & Answers **PDF** and **VCE** file from:

<https://www.pass4itsure.com/1z0-997-21.html>

100% Passing Guarantee
100% Money Back Assurance

Following Questions and Answers are all new published by Oracle
Official Exam Center

-  **Instant Download** After Purchase
-  **100% Money Back** Guarantee
-  **365 Days** Free Update
-  **800,000+** Satisfied Customers



**QUESTION 1**

A startup company is looking for a solution for processing of data transmitted by the IOT devices fitted to transport vehicles that carry frozen foods. The data should be consumed and processed in real time. The processed data should be archived to OCI Object Storage bucket. and use Autonomous Data warehouse (ADW) to handle analytics. Which architecture will help you meet this requirement?

- A. Use OCI Streaming Service to collect the incoming biometric data. Use an open source Hadoop cluster to analyze the data horn streaming service. Store the results to OCI Autonomous Data warehouse (ADW) to handle complex analytics
- B. Use OCI Streaming Service to collect the incoming biometric data. Use Oracle Functions to process the date and show the results on a real-time dashboard and store the results lo OCI Object Storage Store the data In OCI Autonomous Data warehouse (ADW) to handle analytics.
- C. Create an OCI Object Storage bucket to collect the incoming biometric data from the smart pet collar Fetch the data horn OC\ Object storage to OCI Autonomous Data Warehouse (ADW) every day and run analytics Jobs with it
- D. Launch an open source Hadoop cluster to collect the Incoming biometrics data Use an Open source Fluentd cluster to analyze the- data me results to OCI Autonomous Transaction Processing (ADW)to handle complex analytics

Correct Answer: B

Real-time processing of high-volume streams of data

-OCI Streaming service provides a fully managed, scalable, durable storage option for continuous, highvolume streams of data that you can consume and process in real-time

-Use cases Log and Event data collection Web/Mobile activity data ingestion IoT Data streaming for processing and alerts Messaging: use streaming to decouple components of large systems

-Oracle managed service with REST APIs (Create, Put, Get, Delete)

-Integrated Monitoring

QUESTION 2

As a part of migration exercise for an existing on premises application to Oracle Cloud Infrastructure

(OCI), you ore required to transfer a 7 TB file to OCI Object Storage. You have decided to upload

functionality of Object Storage.

Which two statements are true?

- A. Active multipart upload can be checked by listing all parts that have been uploaded, however It Is not possible to list information for individual object part in an active multipart upload
- B. It is possible to spill this fileInto multiple parts using the APIs provided by Object Storage.
- C. It is possible to split this file into multiple parts using rclone tool provided by Object Storage.
- D. After initiating a multipart upload by making a CreateMultiPartUpload RESI API Call, the upload remains active until



you explicitly commit it or abort.

E. Contiguous numbers need to be assigned for each part so that Object Storage constructs the object by ordering, part numbers in ascending order

Correct Answer: AD

You can check on an active multipart upload by listing all parts that have been uploaded. (You cannot list information for an individual object part in an active multipart upload.) After you finish creating object parts, initiate a multipart upload by making a CreateMultipartUpload REST API call. Provide the object name and any object metadata. Object Storage responds with a unique upload ID that you must include in any requests related to this multipart upload. Object Storage also marks the upload as active. The upload remains active until you explicitly commit it or abort it.

QUESTION 3

You have an application running in Microsoft Azure and want to use Oracle Autonomous Data warehouse (ADW) instance for running business analytics. How can you build a secure solution for such a use-case?

- A. Connect the Oracle ADW in your VCN to the Microsoft Azure VNet over the internet.
- B. Create a software VPN connection between Oracle Cloud Infrastructure (OCI) Virtual Cloud Network (VCN) and Microsoft Azure Virtual Network (VNet) and connect the application with Oracle ADW instance.
- C. Setup an interconnect between OCI and Microsoft Azure using FastConnect and ExpressRoute. Use a Service Gateway in OCI Virtual Cloud Network to provide connectivity to the Oracle ADW instance for the application in Microsoft Azure VNet.
- D. Create a software Remote Peering Connection between Oracle Cloud Infrastructure (OCI) Virtual Cloud Network (VCN) and Microsoft Azure Virtual Network (VNet) and connect the application with Oracle ADW instance.

Correct Answer: C

QUESTION 4

You are building a highly available and fault tolerant web application deployment for your company. Similar application delayed by competitors experienced web site attack including DDoS which resulted in web server failing. You have decided to use Oracle Web Application Firewall (WAF) to implement an architecture which will provide protection against such attacks and ensure additional configuration will you need to implement to make sure WAF is protecting my web application 24?. Which additional configuration will you need to Implement to make sure WAF Is protecting my web application 24??

- A. Configure auto scaling policy and it to WAF instance.
- B. Configure Control Rules to send traffic to multiple web servers
- C. Configure multiple origin servers
- D. Configure new rules based on now vulnerabilities and mitigations

Correct Answer: C

Origin Management An origin is an endpoint (typically an IP address) of the application protected by the WAF. An origin can be an Oracle Cloud Infrastructure load balancer public IP address. A load balancer IP address can be used for high



availability to an origin. Multiple origins can be defined, but only a single origin can be active for a WAF. You can set HTTP headers for outbound traffic from the WAF to the origin server. These name value pairs are then available to the application. Oracle Cloud Infrastructure Web Application Firewall (WAF) is a cloud-based, Payment Card Industry (PCI) compliant, global security service that protects applications from malicious and unwanted internet traffic. WAF can protect any internet facing endpoint, providing consistent rule enforcement across a customer's applications. WAF provides you with the ability to create and manage rules for internet threats including Cross-Site Scripting (XSS), SQL Injection and other OWASP-defined vulnerabilities. Unwanted bots can be mitigated while tactically allowing desirable bots to enter. Access rules can limit based on geography or the signature of the request. Distributed Denial of Service (DDoS) A DDoS attack is an often intentional attack that consumes an entity's resources, usually using a large number of distributed sources. DDoS can be categorized into either Layer 7 or Layer 3/4 (L3/4) A layer 7 DDoS attack is a DDoS attack that sends HTTP/S traffic to consume resources and hamper a website's ability to deliver content or to harm the owner of the site. The Web Application Firewall (WAF) service can protect layer 7 HTTP-based resources from layer 7 DDoS and other web application attack vectors.

QUESTION 5

You are part of a project team working in the development environment created in Oracle Cloud Infrastructure (OCI). You realize that the CIDR block specified for one of the subnets in a Virtual Cloud Network (VCN) is not correct and want to delete the subnet. While deleting you get an error indicating that there are still resources that you must delete first. The error includes the OCID of the VNIC that is in the subnet. Which of the following action you will take to troubleshoot this issue?

- A. Use OCI CLI to call "network vnic" and "compute vnic-attachment" operations to find out the parent resource of the VNIC.
- B. Use OCI CLI to delete the VNIC first and then delete the subnet.
- C. Use OCI CLI to delete the subnet using -force option.
- D. Copy and paste OCID of the VNIC in the search box of the OCI Console to find out the parent resource of the VNIC.

Correct Answer: A

QUESTION 6

You are developing a Serverless function for your company's IoT project. This function should access Oracle Cloud Infrastructure (OCI) Object Storage to store some files. You choose Oracle Functions to deploy this function on OCI. However, your security team doesn't allow you to carry any API Token or RSA Key to authenticate the function against the OCI API to access the Object Storage. What should you do to get this function to access OCI Object Storage without carrying any static authentication files? (Choose the best answer.)



A. Set up a Dynamic Group using the format below: `ALL {resource.type = 'fnfunc', resource.compartment.id = 'ocid1.compartment.oc1..aaaaaaaa23_____smwa' }` Create a policy using

the format below to give access to OCI Object Storage:

```
allow dynamic-group acme-func-dyn-grp to manage objects in compartment acme-storage-compartment where all {target.bucket.name= 'acme-functions-bucket' }
```

 Include a call to a "resource principal provider" in your function code as below: `signer = oci.auth.signers.get_resource_principals_signer()`

B. Add these two policy statements for your compartment and then include a call to a "resource principal provider" in your function code:

```
Allow group acme-functions-developers to inspect repos in tenancy
Allow group acme-functions-developers to manage repos in tenancy where all
{target.repo.name=/acme-web-app*/}
```

C. There is no way that you can access the OCI resources from a running function.

D. Add these two policy statements for your compartment to give your function automatic access to all other OCI resources:

```
Allow group <group-name> to manage fn-app in compartment <compartment-name>
Allow group <group-name> to manage fn-function in compartment <compartment-name>
```

A. Option A

B. Option B

C. Option C

D. Option D

Correct Answer: A

<https://blogs.oracle.com/cloud-infrastructure/getting-started-with-oracle-functions-and-object-storage>

QUESTION 7

You have deployed an application server in a private Subnet in your virtual cloud network (VCN). For the database, you have provisioned an Autonomous Transaction Processing (ATP) serverless instance. However, you are unable to connect to the database instance from your application server. Which two steps would you need to enable this connectivity?

A. Add an internet gateway to your VCN and add a route rule to your private subnet route table. CIDR: 0.0.0.0/0 Target: Internet Gateway

B. Add a remote peering connection from your VCN to the ATP VCN

C. Add a stateful egress rule to the security list associated with your private subnet. Destination CIDR: 0.0.0.0/0 Protocols: All Protocols

D. Create a NAT Gateway and add the following route rule to the route table of private subnet. CIDR: 0.0.0.0/0 Target: NAT Gateway

Correct Answer: CD

QUESTION 8

A global media organization is working on a project which lets users upload their videos to the site. After upload is complete, the video should be automatically processed by an AI algorithm. The algorithm will try to recognize certain



actions in the videos so that it can be used to show related advertisements in future. The development team wants to focus on writing AI code and not worry about underlying infrastructure for high availability, scalability, security and monitoring. Which Oracle Cloud Infrastructure (OCI) services would meet these requirements?

- A. OCI Object Storage, OCI Events service and OCI Functions.
- B. Oracle Container Engine for Kubernetes, OCI Notifications and OCI Object Storage.
- C. OCI Events, Oracle Container Engine for Kubernetes and OCI Digital Assistant.
- D. OCI Resource Manager, OCI Functions and OCI Events service.

Correct Answer: A

QUESTION 9

Which of the below options for private access to services within Oracle Cloud Infrastructure (OCI) is NOT valid?

- A. You cannot use the private endpoint for hosts in the on-premises network.
- B. Traffic from an OCI compute instance going through a Service Gateway to Object Storage is routed without being sent over the internet.
- C. You can enable private access to certain services within OCI from your Virtual Cloud Network by using either a private endpoint or a service gateway.
- D. The private endpoint gives hosts within your Virtual Cloud Network access to a given service within Oracle Cloud Infrastructure.

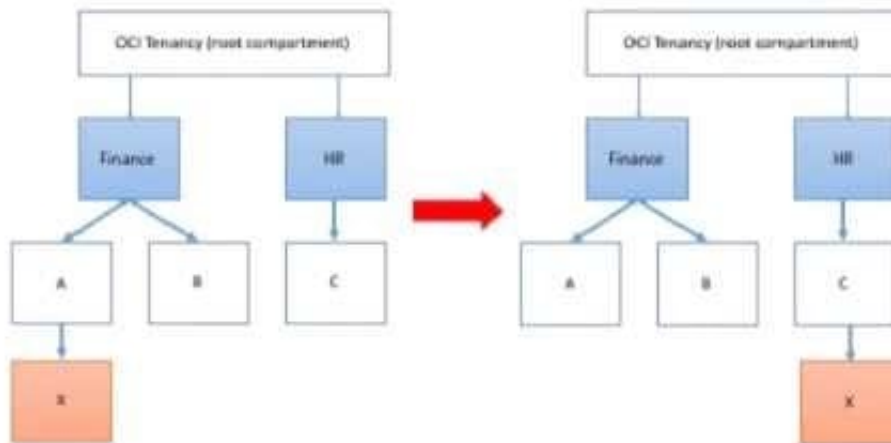
Correct Answer: A

QUESTION 10

Your customer has gone through a recent departmental re structure. As part of this change, they are organizing their Oracle Cloud Infrastructure (OCI) compartment structure to align with the company's new organizational structure.

They have made the following change:

Compartment x is moved, and its parent compartment is now compartment c.



Policy defined in compartment A: Allow group networkadmins to manage subnets in compartment X
Policy defined in root compartment: Allow group admins to read subnets in compartment Finance:A:X
After you move the compartment, which two IAM policies would be required to ensure both groups retain the same permissions to compartment X that they had before? (Choose two.)

- A. Define a policy in the root compartment as follows: Allow group admins to manage subnets in compartment Finance:A:X
- B. Define a policy in compartment HR as follows: Allow group networkadmins to manage subnets in compartment C:X.
- C. Define a policy in the root compartment as follows: Allow group admins to read subnets in compartment HR:C:X
- D. Define a policy in compartment C as follows: Allow group networkadmins to read subnets in compartment X

Correct Answer: BC

QUESTION 11

You work for a bank as the lead Oracle Cloud Infrastructure architect. You designed a highly scalable solution for your company's banking application. The architecture includes a load balancer, application servers with autoscaling configuration based on CPU utilization, and an Autonomous Database with Transaction Processing workload type running in a Virtual Cloud Network (VCN). During the peak utilization period, the application users complain that the application runs slow. What are two possible reasons for the application running slow at times? (Choose two.)

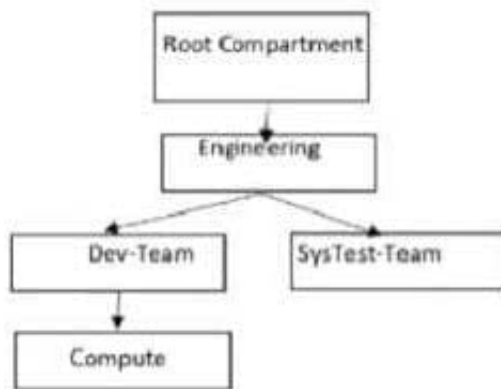
- A. The VCN does not have a Network Security Group configured to allow traffic from the load balancer to all the application servers in the backend set.
- B. Instance pool in autoscaling configuration for the application servers did not scale out due to compartment quota breach of the VM shapes used by the application servers.
- C. The load balancer is not configured correctly to send traffic to all the listeners of the application servers in the backend set.
- D. Instance pool in autoscaling configuration for the Autonomous Database did not scale out due to misconfigured scaling policy.
- E. Instance pool in autoscaling configuration for the application servers did not scale out due to service limit breach of the VM shapes used by the application servers.



Correct Answer: BE

QUESTION 12

You are the Solution Architect that designed this Oracle Cloud Infrastructure (OCI) compartment layout for your organization:



The development team has deployed quite a few instances under `\\Compute\\` Compartment and the operations team needs to list the Instances under the same compartment for their testing. Both teams, development and operations are part of a group called `\\Eng-group\\`. You have been looking for an option to allow the operations team to list the instances without access any confidential information or metadata of resources. Which IAM policy should you write based on these requirements?

- A. Allow group Eng-group to inspect instance-family in compartment Dev-Team:Compute and attach the policy to `\\Engineering\\` Compartment
- B. Allow group Eng-group to inspect instance-family in compartment Dev-Team: Compute and attach the policy to `\\SysTest Team\\` Compartment
- C. Allow group Eng-group to read instance-family in compartment Compute and attach the policy to `\\Engineering\\` Compartment.
- D. Allow group Eng-group to read instance-family in compartment Dev-Team-.Compute and attach the policy to `\\Dev-Team\\`

Correct Answer: A

Policy Attachment When you create a policy you must attach it to a compartment (or the tenancy, which is the root compartment). Where you attach it controls who can then modify it or delete it. If you attach it to the tenancy (in other words, if the policy is in the root compartment), then anyone with access to manage policies in the tenancy can then change or delete it. Typically that's the Administrators group or any similar group you create and give broad access to. Anyone with access only to a child compartment cannot modify or delete that policy. When you attach a policy to a compartment, you must be in that compartment and you must indicate directly in the statement which compartment it applies to. If you are not in the compartment, you'll get an error if you try to attach the policy to a different compartment. Notice that attachment occurs during policy creation, which means a policy can be attached to only one compartment. **Policies and Compartment Hierarchies** a policy statement must specify the compartment for which access is being granted (or the tenancy). Where you create the policy determines who can update the policy. If you attach the policy to the compartment or its parent, you can simply specify the compartment name. If you attach the policy further up the hierarchy, you must specify the path. The format of the path is each compartment name (or OCID) in the path, separated by a colon: `:: . . .` to allow action to compartment Compute so you need to set the compartment PATH as per



where you attach the policy as below examples if you attach it to Root compartment you need to specify the PATH as following Engineering:DevTeam:Compute if you attach it to Engineering compartment you need to specify the PATH as following Dev-Team:Compute if you attach it to Dev-Team or Compute compartment you need to specify the PATH as following Compute Note : in the Policy inspect verb that give the Ability to list resources, without access to any confidential information or user-specified metadata that may be part of that resource.

QUESTION 13

Your organization is planning on using Oracle Cloud Infrastructure (OCI) File Storage Service (FSS). You will be deploying multiple compute instance in Oracle Cloud Infrastructure(OCI) and mounting the file system to these compute instances. The file system will hold payment data processed by a Database instance and utilized by compute instances to create a overall inventory report. You need to restrict access to this data for specific compute instances and must be allowed/blocked per compute instance's CIDR block. Which option can you use to secure access?

- A. Create a new VCN security list, choose SOURCE TYPE as Service and SOURCE SERVICE as FSS. Add stateless ingress and egress rules for specific IP address and CIDR blocks.
- B. Use 'Export option' feature of FSS to restrict access to the mounted file systems.
- C. Create and configure OCI Web Application Firewall service with built in DNS based intelligent routing.
- D. Use stateless Security List rule to restrict access from known IP addresses only.

Correct Answer: B

QUESTION 14

A cloud consultant is working on a implementation project on Oracle Cloud Infrastructure (OCI). As part of the compliance requirements, the objects placed in OCI Object Storage should be automatically archived first and then deleted. He is testing a lifecycle policy on Object Storage and created a policy as below:

```
[ { "name": "Archive_doc", "action": "ARCHIVE", "objectNameFilter": { "inclusionPrefixes": [ "doc" ] },
  "timeAmount": 5, "timeUnit": "DAYS", "isEnabled": true },
  { "name": "Delete_doc", "action": "DELETE", "objectNameFilter": { "inclusionPrefixes": [ "doc" ] },
  "timeAmount": 5, "timeUnit": "DAYS", "isEnabled": true }
]
```

What will happen after this policy is applied?

- A. All the objects having file extension "doc" will be archived for 5 days and will be deleted 10 days after object creation.
- B. All objects with names starting with "doc" will be deleted after 5 days of object creation.
- C. All the objects having file extension "doc" will be archived 5 days after object creation.
- D. All the objects with names starting with "doc" will be archived 5 days after object creation and will be deleted 5 days after archival.

Correct Answer: B



QUESTION 15

You are working on the migration of the web application infrastructure of your company from on- premises to Oracle Cloud Infrastructure. You need to ensure that the DNS cache entries of external clients will not direct them to the on-premises infrastructure after switching to the new infrastructure.

Which of the following options will minimize this problem?

- A. Reduce the TTL of the DNS records after the switch.
- B. DNS changes propagate fast enough that it is not necessary to take any action.
- C. Increase the TTL of the DNS records before the switch.
- D. Increase the TTL of the DNS records after the switch.
- E. Reduce the TTL of the DNS records before the switch.

Correct Answer: E

[1Z0-997-21 PDF Dumps](#)

[1Z0-997-21 Study Guide](#)

[1Z0-997-21 Exam Questions](#)