



1Z0-1066-22^{Q&As}

Oracle Planning and Collaboration Cloud 2022 Implementation
Professional

Pass Oracle 1Z0-1066-22 Exam with 100% Guarantee

Free Download Real Questions & Answers **PDF** and **VCE** file from:

<https://www.pass4itsure.com/1z0-1066-22.html>

100% Passing Guarantee
100% Money Back Assurance

Following Questions and Answers are all new published by Oracle
Official Exam Center

- ⚙️ **Instant Download** After Purchase
- ⚙️ **100% Money Back** Guarantee
- ⚙️ **365 Days** Free Update
- ⚙️ **800,000+** Satisfied Customers





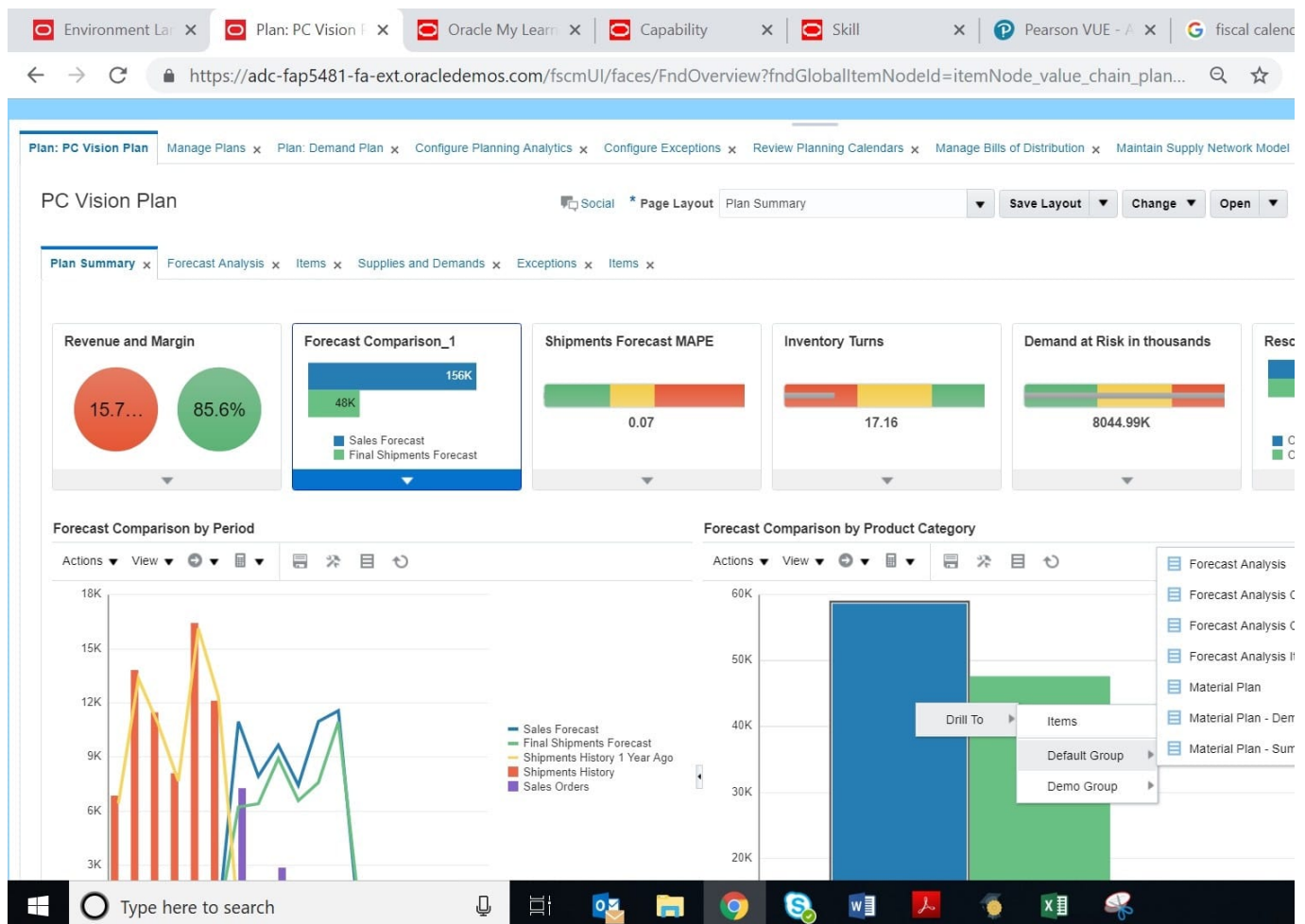
QUESTION 1

You have executed Planning Data Collection and want to confirm that data has successfully been collected. Identify the three data combinations that can be viewed using the Maintain Supply Network Model Page. (Choose three.)

- A. Customer Location and Carriers
- B. Safety Stock and Subinventories
- C. Sales Channel and Demand Class
- D. Calendar and Master Organization
- E. Supplier Site and Service Level

Correct Answer: ADE

QUESTION 2



You have run a plan for your organization and there were sales orders that have been set up for drop shipment that you cannot see in the plan. Which two options explain why the sales orders cannot be seen in the plan? (Choose two.)



- A. Drop Ship Item Validation Org has not been set up.
- B. Drop Ship Demand Class has not be set up.
- C. Supplier not configured in Manage Planning Source Systems
- D. Include drop ship demands and supplies flag has not been checked on your plan options.
- E. Planning Profile '\\Enable Planning for Drop Shipments\\' has not been set to '\\Yes\\'.

Correct Answer: BC

QUESTION 3

Which three statements are true about a drop ship validation organization? (Choose three.)

- A. It is the source for organization-item attributes when creating drop ship planned orders.
- B. It can be a Cost Organization.
- C. It is not required in order to use drop shipments.
- D. It cannot be an item organization.
- E. It is a proxy for the organization during the collections of drop ship sales orders and drop ship history.
- F. It can be an item organization.


Correct Answer: AEF

Use the drop ship validation organization for the following purposes:

- As the source for organization-item attributes when creating drop ship planned orders
- As a proxy for the organization for drop ship forecasts and manual demands
- As a proxy for the organization during the collections of drop ship sales orders and drop ship history

Specify the drop ship validation organization when you generate a forecast or create a manual demand. Drop ship sales order bookings and shipments history are collected with the drop ship validation organization when items are shipped from the warehouse. Demand forecasting can create forecasts for the drop ship validation organization and release the forecasts for planning supplies.

The drop ship validation organization can be the item master for a source system, but it is not required.

 **Note:** The drop ship validation organization must be an item organization. When you set up the drop ship validation organization, if the item master holds any transactions, create a new drop ship validation organization.

QUESTION 4

When analyzing demand fulfillment, what are the three types of recommendations that users can review and accept for expediting? (Choose three.)



- A. Expedite transfer orders
- B. Expedite make orders
- C. Expedite buy orders
- D. Expedite drop ship orders
- E. Expedite make to stock orders

Correct Answer: ABC

QUESTION 5

Your client wants to utilize product categories on sourcing rules. They have created a new category for this and populated the items for it.

Where do they set up the category planning uses when evaluating sourcing rules?

- A. Manage Planning Profile Options
- B. Manage Plans
- C. Manage Sourcing Rules
- D. Manage Assignment Sets
- E. Manage Planning Source Systems

Correct Answer: D

QUESTION 6

The five pre-configured review stages of a Sales and Operations Planning process are Product Review, Demand Review, Supply Review, Financial Review, and Executive Review.

If Product Review is NOT an integral part of your company's SandOP process, how do you configure the system to ignore it?

- A. In Manage Planning Cycles, right-click the Product Review tab. and select Delete.
- B. It is not possible to ignore any of the 5 pre-configured review stages.
- C. In Manage Planning Cycles, do not add any participants or tasks for the Product Review stage.
- D. In Manage Planning Cycles, go to the Actions menu, select Configure Stages, and set Enabled for Product Review to No.

Correct Answer: D

QUESTION 7



Planners are complaining about getting too many exception messages, some of which have minima value for evaluating plan health.

Which three solutions could reduce message clutter? (Choose three.)

- A. Go to Configure Exceptions, and specify a threshold for various messages.
- B. Go to Configure Exception Sets, and for the currently used exception set. specify a threshold for various messages.
- C. Go to Configure Exception Sets, duplicate the currently used exception set, remove the undesired messages from the duplicate set. then assign the duplicate set to all plans.
- D. Go to Configure Exception Sets, create a new set with only the messages the planners care about, and then, set all supply plans to use this new exception set.

Correct Answer: BCD

QUESTION 8

Which two statements are true about Planning Security? (Choose two.)

- A. If a plan is set up as private, there is no way to further limit what users see within the plan.
- B. If a plan is set up as public, there is a way to further limit what users see within the plan.
- C. Data access sets can be used to limit what a planner can see. based on Items, Organizations, Carriers, Suppliers, and Customers.
- D. A plan can be set up to be public or private.

Correct Answer: CD

QUESTION 9

Your client has high-priority customers with frequent, small volume orders.

Which two steps should a backlog planner consider if a backlog run does not produce the desired results? (Choose two.)

- A. Edit the "Enforce Current Commit" or "Pull-in Enabled\\" demand attributes.
- B. Activate more intricate Demand Priority rules.
- C. Isolate the problematic customer in its own Backlog Planning run.
- D. Consider simulation.
- E. Edit the "Pull-in Disabled" demand attribute.

Correct Answer: AD

**QUESTION 10**

Which statement applies only to the planning of back-to-back items and not standard items?

- A. Planning analyzes supply shortages and capacity overloads using any of the standard planning tools.
- B. Must use Global Order Promising and Supply Chain Orchestration to release and create new supplies
- C. Must have added sourcing rules to the Global Order Promising assignment set.
- D. Planning pegs reserved supplies to sales orders.
- E. Planning collects bookings or shipments history to forecast items.

Correct Answer: B

QUESTION 11

Which calendar is supported in the supply planning process but does not support bucketing by week?

- A. Lunisolar
- B. Fiscal
- C. Roman
- D. Gregorian
- E. Julian

Correct Answer: E

The planning process supports two calendars for aggregation in the planning output:

- **Fiscal** calendars: Supports aggregation by week and period on the pages.
 - Julian calendars: Supports daily bucketing and aggregation by calendar month. The Julian calendar does not support bucketing by week.
-

QUESTION 12

Which four types of supplies can be reserved to a sales order in the inventory? (Choose four.)

- A. Work orders
- B. On-hand inventory
- C. Purchase requisitions



D. Purchase orders

E. Transfer orders

F. Planned Orders

Correct Answer: ABDE

QUESTION 13

Your current shipments forecast for Jan 2018 is 1000 and the demand planner determines that the forecast should be 1500. Describe how the demand planner can override shipments forecast. Also, what happens to the final shipments forecast measure when the demand plan is run again and the shipments forecast value changes to 1250?

A. Open a table with the Adjusted Shipments Forecast measure and enter 1500. The Final Shipments Forecast measure will change to 1500 and the value will persist during subsequent demand plan runs.

B. Open a table with the Shipments Forecast measure and override it to 1500. The Final Shipments Forecast measure will change to 1500 and the value will persist during subsequent demand plan runs.

C. Open a table with the Shipments Forecast measure and override it to 1500. The Final Shipments Forecast measure will change to 1500. During the subsequent demand plan run, the Final Shipments Forecast value will change to 1250.

D. Open a table with the Adjusted Shipments Forecast measure and enter 1500. The Final Shipments Forecast measure will change to 1500. During the subsequent demand plan run, the Final Shipments Forecast value will change to 1250.

Correct Answer: A

QUESTION 14



PC Vision Plan



* Page Layout

Plan Summary

Plan Summary x Forecast Analysis x Items x Supplies and Demands x Exceptions x

- ▶ Demand Planning Exceptions
- ▶ Supply Planning Exceptions
 - Demand Quantity Not Satisfied (0)
 - Demand at Risk Due to Insufficient
 - Demand at Risk Due to Resource S
 - Demand at Risk Due to Supplier Ca
 - Items Below Safety Stock (18)
 - Items with Excess Inventory (393)
 - Items with Expired Lots (0)
 - Items with a Shortage (8)
 - Late Replenishment for Forecast (0)
 - Late Replenishment for Sales Order (
 - Late Supply Pegged to Forecast (2)
 - Late Supply Pegged to Sales Order
 - Order Sourced from Alternate Facility
 - Order Sourced from Alternate Supp
 - Orders To Be Canceled (0)
 - Orders To Be Rescheduled In (121)
 - Orders To Be Rescheduled Out (28)

When creating a new replenishment plan, what are the required plan options?

- A. Segment Group. Segments. Policy Assignment Set
- B. Segment Group. Inventory Policies. Policy Assignment Set
- C. Segment Group. Segments. Inventory Policies
- D. Segment Group. Segments. Inventory Policies. Policy Assignment Set

Correct Answer: A

QUESTION 15

Your customer has seasonal demand and wants to generate forecast for next six months. You ran a demand plan for first time using six months of shipments history but the forecast accuracy was low.

Identify two statements that are true in this scenario. (Choose two.)

- A. Running a demand plan with both shipments and booking forecast profile is required to forecast seasonal demand.
- B. Running a demand plan with less than one year of history will impact seasonal analysis.
- C. Running a demand plan with both shipments and seasonal shipments forecast profile is required to forecast seasonal demand.
- D. Running a demand plan with six months of booking history instead of six months of shipment history is required for



seasonal demand.

E. Running a demand plan with 18 to 36 months of shipments history is recommended.

Correct Answer: DE

[1Z0-1066-22 VCE Dumps](#)

[1Z0-1066-22 Practice Test](#)

[1Z0-1066-22 Study Guide](#)