

100% Money Back Guarantee

Vendor: Oracle

Exam Code: 1Z0-048

Exam Name: Oracle Database 10g R2: Administering RAC

Version: Demo

QUESTION 1

Which optional parameter of the DESCRIPTION clause of a TNS entry can you use to randomize the access to available listeners?

- A. FAILOVER
- B. LOAD_BALANCE
- C. SOURCE_ROUTE
- D. TYPE_OF_SERVICE

Correct Answer: B

QUESTION 2

You are working as a DBA in a RAC environment that is available for testing. The RAC environment has all the database files stored in the OCFS file system. You plan to install ASM and move all the database files to ASM to achieve better performance. During the installation, you selected redundancy level as normal for the disk group being added. What is the reason for selecting this redundancy level?

- A. You want to use hardware mirroring.
- B. You do not want to have any mirroring in the disk group.
- C. You have two failure groups defined, so you want to use two-way mirroring.
- D. You have three failure groups defined, so you want to use three-way mirroring.

Correct Answer: C

QUESTION 3

You are running a two-instance database with six redo log groups defined and decide to add a third thread to support a third database instance on the third node of the cluster. Which three commands would you issue to achieve this using command line administration? (Choose three.)

- A. ALTER SYSTEM ENABLE THREAD 3;
- B. ALTER DATABASE ENABLE THREAD 3;
- C. ALTER SYSTEM ADD LOGFILE THREAD 3 GROUP 8;
- D. ALTER SYSTEM ADD LOGFILE THREAD 3 GROUP 7;
- E. ALTER DATABASE ADD LOGFILE THREAD 3 GROUP 7;
- F. ALTER DATABASE ADD LOGFILE THREAD 3 GROUP 8;

Correct Answer: BEF

QUESTION 4

Which initialization parameter would you use for each RAC instance to make sure that each listener on each RAC node is aware of the load of all the others?

- A. LOCAL_LISTENER
- B. REMOTE_LISTENER
- C. REMOTE_DEPENDENCIES_MODE
- D. PREFER_LEAST_LOADED_NODE_<listener-name>

Correct Answer: B

QUESTION 5

You have a well-tuned, non-RAC single instance Oracle database with several services, all of which perform perfectly. You plan to migrate the database to RAC in the next two weeks and all file systems would be shared using Oracle Cluster File System. After the migration, you want to perform a test to monitor RAC-specific tuning issues that would not have occurred on a non-RAC database. Which six areas would you monitor to determine whether there are RAC-specific performance problems after migration? (Choose six.)

- A. Interconnect latency
- B. Instance recovery time
- C. Services with applications that use external tables
- D. Services with applications that truncate large tables
- E. Services with applications using local context variables
- F. Services with query-intensive applications relying on full table scans
- G. Services with insert-intensive applications that use Oracle sequences for index keys
- H. Services with applications that have occasional queries, using index access on modestly sized tables
- I. Services with insert-intensive applications that generate their own keys without Oracle sequences

Correct Answer: ABDFGI

QUESTION 6

After a power failure, you noticed that one of your cluster database instances did not start automatically, whereas all other instances came up successfully. What would you do to determine the precise cause for the instance startup failure? (Choose three.)

- A. Check the resource state by using the CRS_STAT command.
- B. Check for OCR corruptions by using the OCRCHECK command.
- C. Check the alert.log file that belongs to the instance that did not start.
- D. Check the alert.log file that belongs to the Oracle Clusterware software.
- E. Check if the Oracle Clusterware is functional by using the CRSCTL command.
- F. Reboot the node where the failing instance resides to check if the problem is persistent.
- G. Enable extra debugging in the Oracle Clusterware software by using the CRSCTL command.

Correct Answer: ACD

QUESTION 7

View the Exhibit, which displays the cluster database performance page after the same workload has been executed three times on your cluster without varying any non-Oracle workloads on the cluster.

What are the two ways by which you can tell that the corresponding application was better tuned during the second and third execution? (Choose two.)



- A. There is less paging each time.
- B. The run queue length is going down each time.
- C. It takes less time to execute the workload each time.
- D. The number of transactions per second is getting higher each time.
- E. The database throughput graphic is below the red dashed line during the last execution.

Correct Answer: CD

QUESTION 8

Which three storage types are suitable as a flash recovery area for an Oracle 10g RAC database? (Choose three.)

- A. Raw volume
- B. ASM disk group
- C. Local file system
- D. Cluster file system
- E. Shared NFS directory

Correct Answer: BDE

QUESTION 9

After the cluster database has been successfully created, several postinstallation tasks should be completed. Identify three of them. (Choose three.)

- A. Create the ASM instance.
- B. Back up the root.sh script.
- C. Initialize the cluster backup procedure.

- D. Set up additional required user accounts.
- E. Verify the Enterprise Manager/Oracle Cluster Registry configuration by running `srvctl config database -d db_name`.

Correct Answer: BDE

QUESTION 10

Oracle Cluster Registry (OCR) can be recovered on a UNIX platform using which two commands? (Choose two.)

- A. `ocrconfig -import /u01/logical_ocr/yesterday.ocr` where `yesterday.ocr` is an automatically generated OCR backup
- B. `ocrconfig -import /u01/logical_ocr/yesterday.ocr_exp` where `yesterday.ocr_exp` is a logical backup created using the `ocrconfig -export` command
- C. `cp /app/oracle/product/10.1.0/crs_1/cdata/dbclust01/day.ocr /ocfs/OCR/crs.dbf` where `/ocfs/OCR/crs.dbf` is the cluster registry file
- D. `ocrconfig -restore /app/oracle/product/10.1.0/crs_1/cdata/dbclust01/day.ocr` where `day.ocr` is an automatically generated OCR backup

Correct Answer: BD

QUESTION 11

Which two initialization parameters must be set to start up an ASM instance in a RAC environment? (Choose two.)

- A. `INSTANCE_TYPE`
- B. `DB_UNIQUE_NAME`
- C. `ASM_DISKSTRING`
- D. `ASM_DISKGROUPS`
- E. `ASM_POWER_LIMIT`
- F. `CLUSTER_DATABASE`

Correct Answer: AF

QUESTION 12

Your company has a combination of high availability and scalability requirements that need to be addressed, and RAC has been discussed as a solution.

There are a mix of "off-the-shelf" software products and homegrown applications currently in use in your environment that run on single-instance Oracle databases.

You have been asked by the IT director to provide an impact analysis report to help assess the impact on applications when migrating to RAC.

Which three are among the areas that should be examined for performance impact and application functionality impact or for both? (Choose three.)

- A. applications that use large parallel full table scans
- B. applications that truncate tables in a data warehouse process
- C. three-tier applications that use application global context variables
- D. client/server type applications that use application local context variables
- E. applications that access small tables using the same index occasionally
- F. applications that use SQL profiles created by the ATO optimizer in the SQL Tuning Advisor

Correct Answer: ABC

QUESTION 13

You decide to implement a Data Guard configuration to support a disaster recovery plan for your RAC database. Your primary database has all shared files and the flash recovery area is stored on ASM disk

groups. Which three options exist for storing the data guard broker configuration files at the primary location? (Choose three.)

- A. can be in any shared ASM disk group
- B. can be stored on shared Raw Devices
- C. must be stored on Oracle Cluster File System if a cluster file system is used
- D. may be stored on any supported cluster file system if a cluster file system is used
- E. must be in the same shared ASM disk group as the database data files if the broker configuration files are stored in ASM disk groups
- F. must be in the same shared ASM disk group as the Flash Recovery Area if the broker configuration files are stored in ASM disk groups.

Correct Answer: ABD

QUESTION 14

Your company has certain standard practices for technology and you are configuring ASM disk groups for your four-node RAC cluster. The company guidelines suggest that there is one disk group for the flash recovery area that is shared by all databases and a separate disk group for the database area of all databases. Which three exceptions exist that may require you to create additional disk groups? (Choose three.)

- A. The retention policy for backups are different for different databases.
- B. There are large nonpartitioned tables accessed frequently using indexes.
- C. The disk farm has different disk models with different characteristics and ages.
- D. Some databases operate in ARCHIVELOGMODE and others in NOARCHIVELOGMODE.
- E. Some database instances are shut down every night while others are always running.
- F. Applications using the databases have different Service-Level Agreements for response time and throughput.
- G. There are partitioned tables where the older partitions are in read-only tablespaces and seldom accessed, but the more recent partitions are frequently accessed.

Correct Answer: CFG

QUESTION 15

You have attended a user group presentation on RAC and based on what you have learned you feel that your company would benefit from having the RAC option to meet its Oracle database requirements in several ways. Your manager does not know much about RAC and asks you to create a presentation to the team explaining RAC, and whether it should be implemented in your installation. Which three statements explain the benefits and implications of RAC? (Choose three.)

- A. RAC alone would not help protect from human errors.
- B. RAC would increase availability in the event of data failures.
- C. RAC would increase availability in the event of a network failure.
- D. RAC alone would increase availability when doing release upgrades.
- E. RAC would increase scalability for all application workloads in all cases.
- F. RAC would increase availability in the event of node and instance failures.
- G. RAC used in conjunction with parallel execution may provide speedup of DSS queries.
- H. RAC used in conjunction with parallel execution may provide for speedup of OLTP workload processes.

Correct Answer: AFG

QUESTION 16

In a RAC environment, you see a steep increase for enq:HW - contention and gc current grant wait events. What would you do to fix this issue?

- A. Increase the cache size of sequences.

- B. Reduce the time of transactions by committing more often.
- C. Use larger uniform extent sizes for objects.
- D. Reduce the number of updates causing locks on tables accessed by multiple instances.

Correct Answer: C

QUESTION 17

After migrating from a 10g R1 cluster to 10g R2, you decide to multiplex your voting disk. Which are the two ways in which you can accomplish this task? (Choose two.)

- A. You should not use symbolic links.
- B. You can add additional voting disks online.
- C. You must add additional voting disks offline.
- D. You may use the VIPCA utility to add new voting disks.
- E. You may use the command: `crsctl add css votedisk <new voting disk path>`

Correct Answer: BE

QUESTION 18

You are about to build a new Oracle Clusterware-based cluster and you want to make the installation process as smooth as possible. You decide to use the Cluster Verification Utility (CLUVFY) to check whether or not your system administrator has set up the hardware and system software correctly. Which two statements about CLUVFY are true? (Choose two.)

- A. You can run CLUVFY only from a privileged operating system account.
- B. You can run CLUVFY directly from the Oracle Clusterware distribution media.
- C. CLUVFY cannot be used until the Oracle Clusterware is installed successfully.
- D. After the Oracle Clusterware installation, you can run CLUVFY from the Oracle Home that holds the CRS binaries.
- E. You have to install CLUVFY on all cluster nodes in order to use CLUVFY on other nodes than the one from which you perform the installation.
- F. To use CLUVFY during the Oracle Clusterware installation, you have to download CLUVFY from the Oracle Technology Network (OTN) Web site and install it before you can use it.

Correct Answer: BD

QUESTION 19

Several steps must be followed to successfully add a new node to your cluster database. Assuming that a UNIX platform is used, which of the three steps below are correct? (Choose three.)

- A. Add instances using OUI.
- B. Reconfigure listeners for the new node with netca.
- C. Configure the OS and hardware for the new node.
- D. Add the node to the cluster using the `addnode.sh` script run from `ORA_CRS_HOME`.
- E. Add the RAC software to the new node using `addnode.sh` from `ORA_CRS_HOME`.

Correct Answer: BCD

QUESTION 20

Which three statements regarding backup of the voting disk are true? (Choose three.)

- A. On UNIX platforms, the voting disk can be backed up with the `dd` command.
- B. A backup of the voting disk should be taken whenever an RMAN catalog reset is done.
- C. A backup of the voting disk should be taken whenever a new node is added to the cluster.
- D. A backup of the voting disk should be taken whenever an existing node is removed from the cluster.
- E. Whenever a voting disk backup is made, the Clusterware software should be stopped on all nodes in the cluster.

Correct Answer: ACD

QUESTION 21

Which four statements contain accurate information regarding RAC VIPs and application VIPs? (Choose four.)

- A. A RAC VIP fails over if the listener fails.
- B. A failed over RAC VIP does accept new connections.
- C. A failed over application VIP does accept new connections.
- D. An application VIP fails over if the associated application fails over.
- E. It is recommended to share application VIPs among multiple applications.
- F. It is recommended to share a RAC VIP among several database instances.
- G. It is not recommended to share an application VIP among several applications.
- H. It is not recommended to share a RAC VIP among several database instances.

Correct Answer: CDFG

QUESTION 22

You are creating a database in your RAC implementation. You are using the DBCA to create the database, and you selected the Raw Devices Mapping file on one of the screens of the DBCA. What is the reason for selecting this file?

- A. You want the DBCA to bind the partitions to raw devices.
- B. You want to set the appropriate raw partition for each database file.
- C. You want to configure an ASM diskgroup containing raw devices.
- D. You want to provide the DBCA with a list of all the storage devices that are currently bound to a raw interface.

Correct Answer: B

QUESTION 23

When do you get the first notification after you execute the following command on instance RDBA1?

```
exec DBMS_SERVER_ALERT.SET_THRESHOLD(-  
METRICS_ID => dbms_server_alert.elapsed_time_per_call, WARNING_OPERATOR =>  
dbms_server_alert.operator_ge,  
WARNING_VALUE => '500000',  
CRITICAL_OPERATOR => dbms_server_alert.operator_ge,  
CRITICAL_VALUE => '750000',  
OBSERVATION_PERIOD => 15,  
CONSECUTIVE_OCCURRENCES => 3,  
INSTANCE_NAME => 'RDBA1',  
OBJECT_TYPE => dbms_server_alert.object_type_service,  
OBJECT_NAME => 'ERP');
```

- A. when the average elapsed time per call for the ERP service over a 45-minute period exceeds 0.5 seconds
- B. when the average elapsed time per call for the ERP service over a 45-minute period exceeds 0.75 seconds
- C. when the average elapsed time per call for the ERP service over a 15-minute period exceeds 0.5 seconds three consecutive times
- D. when the average elapsed time per call for the ERP service over a 15-minute period exceeds 0.75 seconds three consecutive times

Correct Answer: C

QUESTION 24

You are asked to investigate a problem regarding client connectivity between the HR service and a

database, which is on a four-node RAC cluster. The HR service has four preferred instances on the RAC cluster. This cluster also supports five other services. Occasionally, a client-connect request for the HR service takes several minutes to connect, whereas the other five services connect within a second or two. Client-side and server-side connection load balancing are used for all the services. Which combination of network settings would explain these symptoms? (Choose two.)

- A. The listener on one or more nodes is listening only on the Virtual IP address and the HR TNSNAMES entry uses the Hostnames for the Virtual IP addresses.
- B. The TNSNAMES.ORA file has an entry for all six services that uses the host name for the Public IP address and not the Virtual IP address.
- C. The listener on one or more nodes is listening on both the Public IP address and the Virtual IP address, and the HR TNSNAMES entry uses the Virtual IP address.
- D. The TNSNAMES.ORA file has an entry for the five other services that use the hostnames for the Virtual IP addresses and all the listeners listen on both the Public and Virtual IP addresses.
- E. The TNSNAMES.ORA file has an entry for the HR service that uses only the host name for the public IP address, and all the listeners listen on both the Public and Virtual IP addresses.

Correct Answer: DE

QUESTION 25

You are considering issues involving backup and recovery of the voting disk. Select four correct statements. (Choose four.)

- A. Backup can be performed online.
- B. Use symbolic links to simplify recovery of the voting disk.
- C. To back up the voting disk, use the command ocrconfig -export.
- D. If you lose your voting disk and do not have a backup, you must reinstall Oracle Clusterware.
- E. You can determine the voting disks currently used by CSS with the command crsctl query css votedisk.

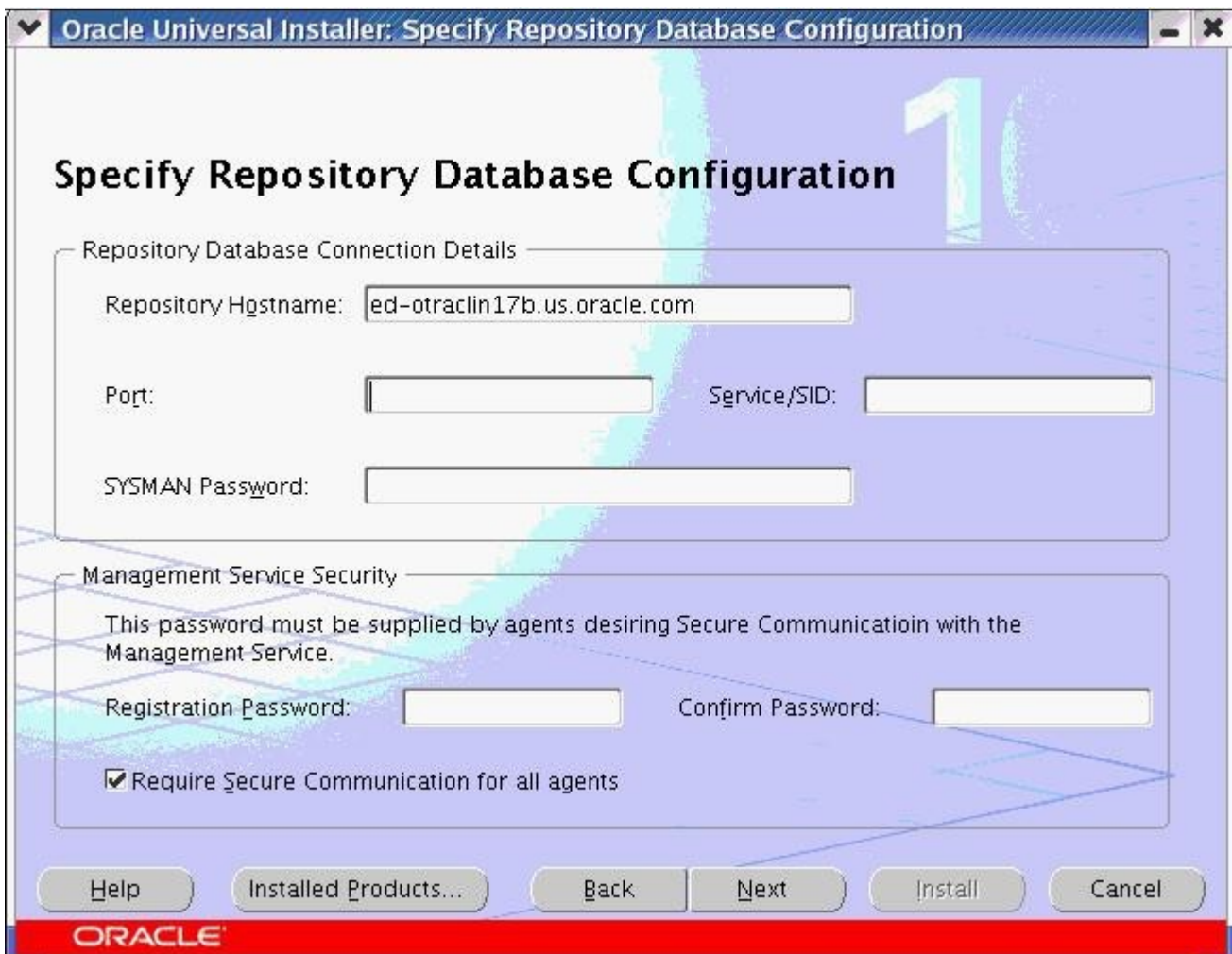
Correct Answer: ABDE

QUESTION 26

View the Exhibit and examine an installation step of Oracle Enterprise Manager Grid Control 10gR2 to manage your RAC installation. You entered the host name but you are not sure about the port number. The following is the list of port numbers from the host ed-otraclin17b.us.oracle.com:

- 1) 5561: iSQL*Plus HTTP port number
- 2) 1158: Enterprise Manager Console HTTP Port number
- 3) 3938: Enterprise Manager Agent Port number
- 4) 1521: Listener port number
- 5) 4889: The default port number that you plan to use for the new Management Service

Which port number should be provided here for successful installation?



- A. 5561
- B. 1521
- C. 3938
- D. 1158
- E. 4889

Correct Answer: B

QUESTION 27

Which three statements about Snapshot Control File Management in a RAC environment are true? (Choose three.)

- A. You can use a cluster file system or a raw device to store snapshot control files.
- B. By default, the snapshot control file is created on the node that is making the backup.
- C. RMAN parameters controlling snapshot control files can be configured from the Enterprise Manager Cluster Database home page.
- D. You need to configure a default path and file name for these snapshot control files that is valid on every node from which you might initiate an RMAN backup.

Correct Answer: ABD

QUESTION 28

Which statement regarding Clusterware is false? (Choose the false statement.)

- A. Oracle Clusterware is installed using the Oracle Universal Installer (OUI).
- B. The ORA_CRS_HOME directory must not be the same as the ORACLE_HOME directory.

- C. The Oracle Database 10g Clusterware stack is compatible with Oracle 9i Group Services (GSD) processes.
- D. The installation of Oracle Clusterware is mandatory even if you have installed vendor-specific clusterware.

Correct Answer: C

QUESTION 29

Which three tools can you use to patch your RAC database? (Choose three.)

- A. dbca
- B. emctl
- C. emca
- D. opatch
- E. EM Database Control
- F. Oracle Universal Installer

Correct Answer: DEF

QUESTION 30

Your company asked you to implement RAC to enhance the scalability and availability of the database that you manage. Your coworker suggested that you use ASM as the only storage option. However, you implemented RAC with Automatic Storage Management (ASM) as well as OCFS as storage options. What are the reasons for implementing both OCFS and ASM as storage options? (Choose all that apply.)

- A. You want to avoid keeping Oracle binaries on local storage.
- B. You do not want to use raw devices to store voting and OCR files.
- C. You do not want to store any file other than voting and OCR files in ASM.
- D. You want to use the Oracle Managed Files (OMF) feature but that is not supported by ASM.
- E. You require OCFS to store archive log files because ASM does not support these files.

Correct Answer: AB

QUESTION 31

You execute the following command from the first node of your cluster:

```
crsctl add css votedisk /dev/raw/raw9
```

However, you get an error message indicating that Oracle Clusterware stack is not started. Which command would you execute?

- A. `crsctl add css votedisk /dev/raw/raw9 -force`
- B. `crsctl start crs`
`crsctl add css votedisk /dev/raw/raw9`
- C. `crsctl start crs`
`crsctl add css votedisk /dev/raw/raw9 -force`
- D. `crsctl enable crs`
`crsctl add css votedisk /dev/raw/raw9`
- E. `crsctl enable crs`
`crsctl add css votedisk /dev/raw/raw9 -force`

Correct Answer: A

QUESTION 32

After applying a patch to the network device drivers in your operating system, you verify using `CRS_STAT -T` that everything runs normally. View Exhibit1 for the `CRS_STAT -T` output.

After your coffee break, customers begin complaining about the performance of your Oracle Real Application Clusters database. Suddenly, the response time has increased and establishing new connections is slower than it used to be. You run `CRS_STAT -T` again to check if there is a problem.

Based on Exhibit2, what is your conclusion, and what would you do to correct this?

| | | | |
|----------------------------|--------|--------|----------------|
| ora....30a.vip application | ONLINE | ONLINE | ed-olraclin30a |
| ora....30b.vip application | ONLINE | ONLINE | ed-olraclin30b |
| ora....30a.vip application | ONLINE | ONLINE | ed-olraclin30a |
| ora....30b.vip application | ONLINE | ONLINE | ed-olraclin30a |

- A. There is no problem, so nothing needs to be corrected.
- B. You cannot tell what the problem is based on Exhibit2, so you cannot fix this.
- C. Somebody relocated the VIP from the second node to the first node for an unknown reason. You just have to relocate it back.
- D. The second node in your cluster is down and, therefore, CRS has relocated the VIP from the second node to the first node. After you fix the second node, CRS would relocate the relocated VIP back to its original node.
- E. The second node in your cluster is down and, therefore, CRS has relocated the VIP from the second node to the first node. After you fix the problem on the second node, you have to relocate the relocated VIP back to its original node using the SRVCTL command.

Correct Answer: D

QUESTION 33

Which optional parameter of the DESCRIPTION clause of a TNS entry can you use to make sure that another protocol address is tried if the first one fails?

- A. FAILOVER
- B. LOAD_BALANCE
- C. SOURCE_ROUTE
- D. TYPE_OF_SERVICE

Correct Answer: A

QUESTION 34

You are asked to design a Maximum Availability Solution for a RAC configuration that provides for continuous availability for the Oracle database and which can survive instance failures, node failures, data failures, and site failures. The RAC configuration has a four-node cluster with five different services configured. Performance must be maintained for any failure situation for all the services, and all data must be preserved. All the servers in the configuration will have the same hardware. Which configuration would you recommend?

- A. Asymmetric RAC and Dataguard configuration with a mixture of RAC and single instances using ASM at all sites with the same service preferences
- B. Asymmetric RAC and a Physical Standby Database in a Dataguard configuration with RAC and ASM at all sites with the same number of instances but different service preferences
- C. Asymmetric RAC and a Logical Standby Database in a Dataguard configuration with RAC and ASM at all sites with the same number of instances but different service preferences
- D. Symmetric RAC and a Physical Standby Database in a Dataguard configuration with RAC and ASM at all sites with the same number of instances and the same service preferences

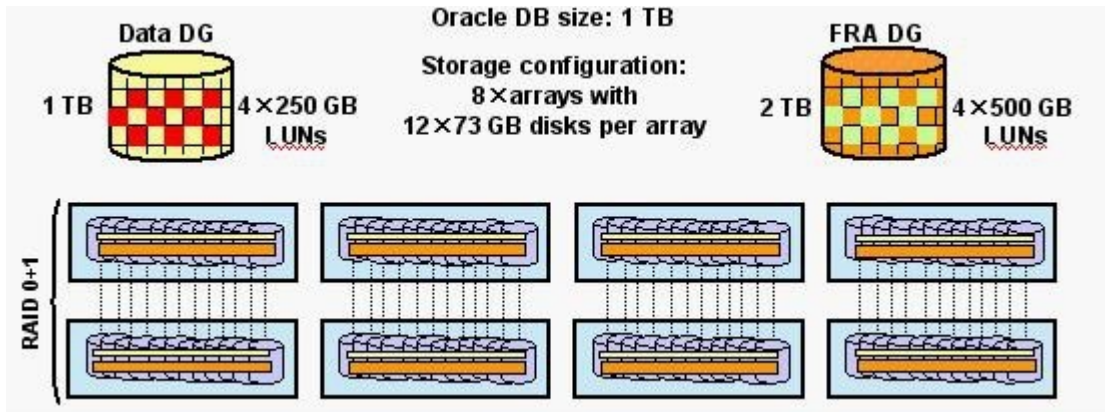
Correct Answer: D

QUESTION 35

View the Exhibit.

You are required to support your Oracle RAC configuration using ASM and RAID technology. You plan to discuss the storage configuration with the storage technology team. They have proposed a configuration as shown in the exhibit with a separate set of LUNs for the data disk group and the flash recovery area disk group and a 500 KB stripe size in line with other non-Oracle LUNs. The Data disk group has four 250G LUNs and the FRA disk group has four 500G LUNs, both of which are mirrored.

What are three disadvantages of this configuration? (Choose three.)



- A. Index Range Scans would cause I/O to many different physical disks.
- B. The LUNs are not aligned with ASM Allocation Units, which may lead to I/O bottlenecks.
- C. Retention policies that require backups to be kept for long time periods may cause wasted space due to large allocation units.
- D. I/O to the flash recovery area disk group for backups may cause performance issues when full table scans are occurring during batch workloads.

Correct Answer: BCD

QUESTION 36

You and your colleague are working with Oracle Support on a database instance stability issue. The Oracle Support engineer wants you to issue a `crsctl debug log crs ?crsctl debug log crs` command to assist you in your troubleshooting assignment. Why does the Oracle Support engineer want you to do this?

- A. to list what debugging options are available on the CRS daemon
- B. to enable extra debugging on the currently running CRS daemon
- C. to list which debugging options are enabled on the CRS daemon
- D. to enable extra debugging on the CRS daemon the next time the CRS daemon is started
- E. to enable extra debugging on the currently running and CRS daemons as well as those that will run in the future

Correct Answer: E

QUESTION 37

After a disk failure caused by a power outage, your CRS is unable to start up completely because all your OCR files are lost. Which commands would you use and in which order to redress this situation?

- 1 OCRCONFIG -REPAIR (on the local cluster node only)
- 2 OCRCONFIG -REPAIR (on all cluster nodes)
- 3 OCRCONFIG -RESTORE <path name>
- 4 OCRCONFIG -IMPORT <path name>
- 5 CRCTL STOP CRS (on the local cluster node only)
- 6 CRCTL STOP CRS (on all cluster nodes)
- 7 OCRCONFIG -SHOWBACKUP
- 8 CRCTL START CRS (on the local cluster node only)
- 9 CRCTL START CRS (on all cluster nodes)

- A. 5, 3, 8.
- B. 6, 4, 9.
- C. 5, 4, 8.
- D. 6, 3, 9.
- E. 7, 6, 3, 9.
- F. 7, 6, 4, 9.

G. 7, 6, 3, 2, 9.

Correct Answer: E

QUESTION 38

The following query shows four MEMBER disks and three CANDIDATE disks.

```
SQL> select name, header_status, path from v$asm_disk;
```

```
NAME HEADER_STATUS PATH
-----
CANDIDATE /dev/rdsk/diska5
CANDIDATE /dev/rdsk/diska6
CANDIDATE /dev/rdsk/diska7
DISK01 MEMBER /dev/rdsk/diska1
DISK02 MEMBER /dev/rdsk/diska2
DISK03 MEMBER /dev/rdsk/diska3
DISK04 MEMBER /dev/rdsk/diska4
7 rows selected.
```

Using SQLPlus you want to add /dev/rdsk/diska5 and /dev/rdsk/diska6 to diskgroup DGROUP1. DGROUP1 is currently mounted.

Pick the statement that would fail to add diska5 and diska6.

- A. ALTER DISKGROUP dgroup1 ADD DISK '/dev/rdsk/disk*5','/dev/rdsk/disk*6';
- B. ALTER DISKGROUP dgroup1 ADD DISK '/dev/rdsk/diska5','/dev/rdsk/diska6';
- C. ALTER DISKGROUP dgroup1 ADD DISK '/dev/rdsk/diska5' name disk05,'/dev/rdsk/diska6' name disk06;
- D. ALTER DISKGROUP dgroup1 ADD DISK '/dev/rdsk/diska*';
- E. ALTER DISKGROUP dgroup1 ADD DISK '/dev/rdsk/diska[56]';

Correct Answer: D

QUESTION 39

You want check whether the group services node application is running on all the nodes in your cluster before you create a cluster database. Which utility can you use to make sure the node application is running on all nodes in the cluster?

- A. onsctl
- B. crsctl
- C. lsnrctl
- D. crs_stat
- E. addnode.sh

Correct Answer: D

QUESTION 40

You defined the HR service using the following command:

```
srvctl add service -d RACDB -s HR -r RAC02,RAC03 -a RAC01
```

After a while, you realize that there is a workload peak on the HR service, and you decide to temporarily start HR on the RAC04 instance.

Which command or series of commands would you use to start HR on RAC04?

- A. srvctl start service -d RACDB -s HR -i RAC04
- B. srvctl remove service -d RACDB -s HR; srvctl add service -d RACDB -s HR -r RAC02,RAC03,RAC04 -a RAC01
- C. srvctl remove service -d RACDB -s HR; srvctl add service -d RACDB -s HR -r RAC02,RAC03,RAC04 -a

To Read the [Whole Q&As](#), please purchase the [Complete Version](#) from [Our website](#).

Trying our product !


- ★ **100%** Guaranteed Success
- ★ **100%** Money Back Guarantee
- ★ **365 Days** Free Update
- ★ **Instant Download** After Purchase
- ★ **24x7** Customer Support
- ★ Average **99.9%** Success Rate
- ★ More than **69,000** Satisfied Customers Worldwide
- ★ Multi-Platform capabilities - **Windows, Mac, Android, iPhone, iPod, iPad, Kindle**

Need Help

Please provide as much detail as possible so we can best assist you.

To update a previously submitted ticket:



| | | |
|---|---|--|
|  One Year Free Update Free update is available within One Year after your purchase. After One Year, you will get 50% discounts for updating. And we are proud to boast a 24/7 efficient Customer Support system via Email. |  Money Back Guarantee To ensure that you are spending on quality products, we provide 100% money back guarantee for 30 days from the date of purchase. |  Security & Privacy We respect customer privacy. We use McAfee's security service to provide you with utmost security for your personal information & peace of mind. |
|---|---|--|

Guarantee & Policy | Privacy & Policy | Terms & Conditions

Any charges made through this site will appear as Global Simulators Limited.

All trademarks are the property of their respective owners.