



1Y0-A21^{Q&As}

Basic Administration for Citrix NetScaler 9.2

Pass Citrix 1Y0-A21 Exam with 100% Guarantee

Free Download Real Questions & Answers **PDF** and **VCE** file from:

<https://www.pass4itsure.com/1y0-a21.html>

100% Passing Guarantee
100% Money Back Assurance

Following Questions and Answers are all new published by Citrix
Official Exam Center

- ⚙️ **Instant Download** After Purchase
- ⚙️ **100% Money Back** Guarantee
- ⚙️ **365 Days** Free Update
- ⚙️ **800,000+** Satisfied Customers





QUESTION 1

Scenario: An administrator is planning a software upgrade of a NetScaler HA pair from NetScaler version

8.1 Standard Edition to version 9.2 Enterprise Edition in order to take advantage of the new features. In the current environment, the NSIP for the pair is an IPv4 address.

Which two steps must the administrator take to complete the NetScaler migration in this scenario? (Choose two.)

- A. Obtain a new NetScaler license.
- B. Enable the IPv6 protocol translation.
- C. Add the NSIP address after the HA pair has been upgraded.
- D. Ensure propagation and synchronization are disabled during migration.

Correct Answer: AD

QUESTION 2

Which mode must an administrator enable to override the routing table on a NetScaler system?

- A. USIP
- B. Edge
- C. Transparent SSL
- D. MAC-based forwarding (MBF)

Correct Answer: D

QUESTION 3

Which three parameters does an administrator need to monitor a configured DNS service on a NetScaler? (Choose three.)

- A. Query
- B. NAS IP
- C. IP address
- D. Query type
- E. User name and password

Correct Answer: ACD

**QUESTION 4**

Which three components does an administrator have to configure in order to establish a basic content switching setup? (Choose three.)

- A. GSLB sites
- B. SSL Offload
- C. ADNS services
- D. Rule or URL-based policies
- E. Load balancing virtual server
- F. Content switching virtual server

Correct Answer: DEF

QUESTION 5

Scenario: An administrator is configuring a NetScaler for a network environment where the back- end servers are located on different subnets. The administrator will need to configure the NetScaler to communicate with the different subnets.

Which two steps should the administrator take to maintain the communication between the NetScaler and the back-end servers? (Choose two.)

- A. Enable USIP mode.
- B. Enable Path MTU Discovery.
- C. Ensure USNIP mode is enabled.
- D. Configure SNIPs for the server subnets.

Correct Answer: CD

QUESTION 6

Scenario: A network administrator working with two NetScaler systems has encountered an issue with HA. The administrator notices that HA synchronization is failing. The administrator has already run the command on both nodes but needs more information.

Which two additional steps should the administrator take to collect the appropriate data in order to troubleshoot this issue? (Choose two.)

- A. Collect the files in /var/core.
- B. Collect the files in /var/log/auth.log.
- C. Run show techsupport from both NetScalers.



D. Run `/netscaler/nstrace.sh -sz 0` to gather an nstrace.

Correct Answer: CD

QUESTION 7

Scenario: An administrator is configuring a NetScaler system in one-armed mode. The administrator has connected the NetScaler appliances to the network through a switch and will soon configure the appliances as a pair with HA enabled.

Which two steps should the administrator take to successfully configure HA in this environment? (Choose two.)

- A. Disable all unused network interfaces.
- B. Ensure the NSIP is unique on each node.
- C. Ensure the NSIP is identical on each node.
- D. Change the default nsroot password on each node of the HA pair.

Correct Answer: AB

QUESTION 8

What can an administrator configure to perform a health check for a SVC1, which is transferring HTTPS traffic so that a probe is only sent when there is no traffic to the server?

- A. An HTTP monitor with the secure parameter selected
- B. An HTTP monitor with the transparent parameter selected
- C. An HTTP-Inline monitor with the secure parameter selected
- D. An HTTP-ECV monitor with the transparent parameter selected

Correct Answer: C

QUESTION 9

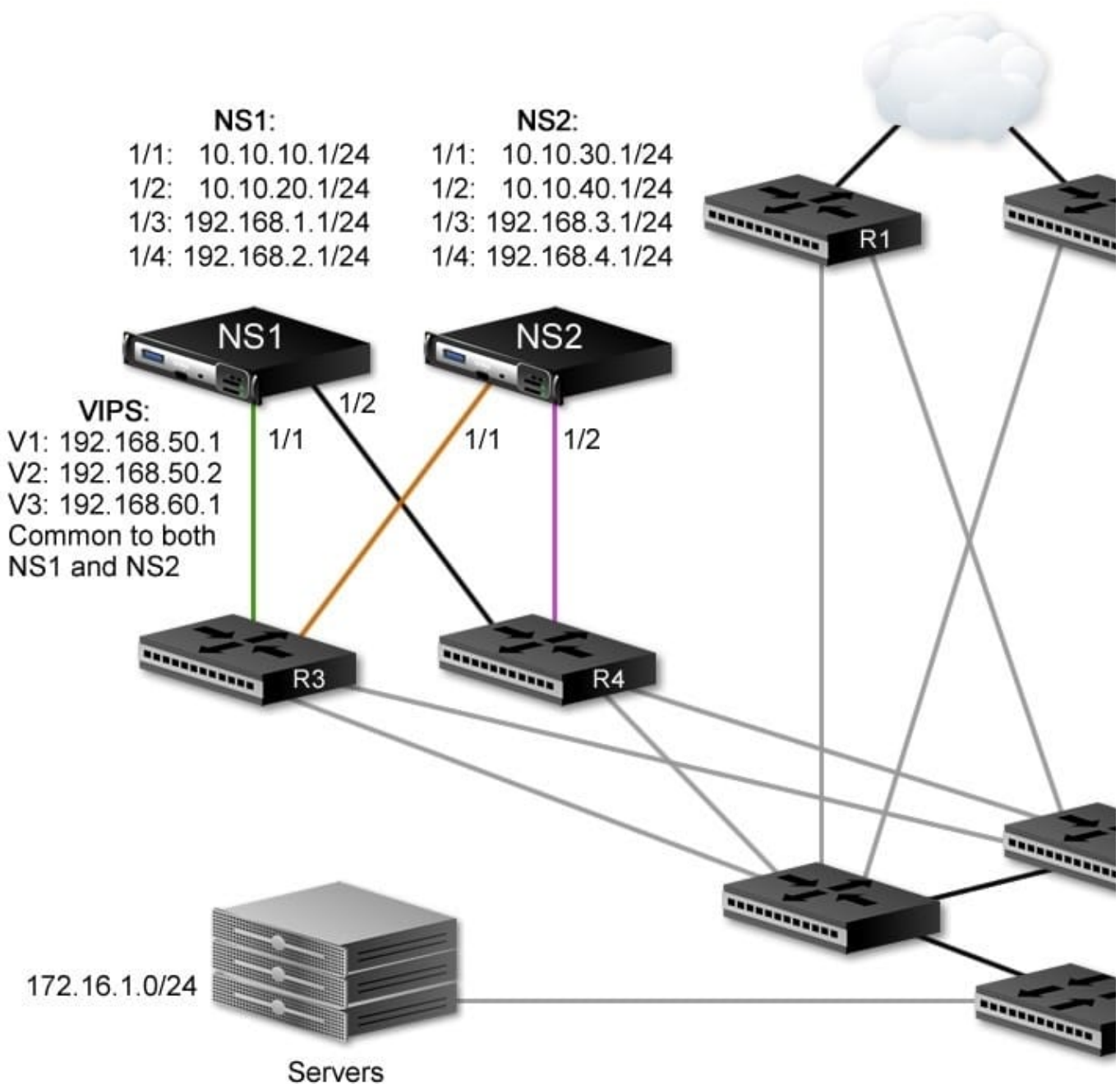
An administrator has executed the following commands: `enable ns feature lb` `add service s1 1.1.1.1 HTTP 80` `add service s2 1.1.1.2 HTTP 80` `add lb vserver vs1 HTTP 1.1.1.3 80` However, the administrator notices that the virtual server state is DOWN. Which action must the administrator take to set the virtual server state to UP?

- A. Set lb vserver vs1 -state UP.
- B. Bind a monitor to the services.
- C. Set lb vserver vs1 -accessDown yes.
- D. Bind the two services to the lb vserver vs1.

Correct Answer: D

**QUESTION 10**

Scenario: An administrator is working within a network environment as depicted in the attached exhibit. The NetScaler systems in this HA pair need to exchange heartbeat packets over L3 through routers R3 and R4.



How can the administrator achieve this HA functionality?

- A. Enable the dynamic routing feature.
- B. Configure Route Health Injection (RHI).



- C. Bind a route monitor to each NetScaler device.
- D. Enable Independent Network Configuration (INC).

Correct Answer: D

QUESTION 11

When planning a deployment, in which setup scenario must an administrator configure the NetScaler system as the default router for the servers in the environment?

- A. When USNIP is configured
- B. In a single subnet configuration
- C. In a two-arm mode configuration
- D. When USIP is configured for services

Correct Answer: D

QUESTION 12

An administrator is determining when a particular service was unavailable in the past due to a failure condition detected by the assigned monitor.

Which NetScaler Configuration Utility option would report the service states detected in the past?

- A. View events
- B. Memory usage
- C. View dmesg boot
- D. TCP/IP Connections
- E. View console messages

Correct Answer: A

QUESTION 13

Scenario: An administrator set up a NetScaler in an HA configuration. When the Primary node was rebooted due to a power failure, the failover did NOT occur as expected.

Which configuration settings must have prevented the failover in the above scenario?

- A. Primary node is set to fail-safe mode.
- B. Primary node is set to stay secondary.



- C. Secondary node is set to do not failover.
- D. Secondary node is set to stay secondary.

Correct Answer: D

QUESTION 14

Scenario: An administrator plans to set up a NetScaler in an HA configuration. The two nodes in the HA pair are located on two separate networks.

Which setting must the administrator configure on each node to ensure that both nodes in the HA pair can synchronize configuration and propagate commands?

- A. Add static route for remote node network
- B. Add route monitor for remote node network
- C. Turn on Independent Router Configuration (IRC)
- D. Turn on Independent Network Configuration (INC) mode

Correct Answer: D

QUESTION 15

An administrator wants to configure the virtual server and services so that existing connections stay open when a service is marked down but NOT when a virtual server is marked down.

How must the administrator configure the service and virtual server to reflect this dependency?

- A. set lb vserver lbv1 -downStateFlush ENABLED set service svc1 -downStateFlush ENABLED
- B. set lb vserver lbv1 -downStateFlush DISABLED set service svc1 -downStateFlush ENABLED
- C. set lb vserver lbv1 -downStateFlush ENABLED set service svc 1 -downStateFlush DISABLED
- D. set lb vserver lbv1 -downStateFlush DISABLED set service svc1 -downStateFlush DISABLED

Correct Answer: C

[Latest 1Y0-A21 Dumps](#)

[1Y0-A21 Study Guide](#)

[1Y0-A21 Exam Questions](#)