



1Y0-201^{Q&As}

Managing Citrix XenDesktop 7.6 Solutions exam

Pass Citrix 1Y0-201 Exam with 100% Guarantee

Free Download Real Questions & Answers **PDF** and **VCE** file from:

<https://www.pass4itsure.com/1y0-201.html>

100% Passing Guarantee
100% Money Back Assurance

Following Questions and Answers are all new published by Citrix
Official Exam Center

- ⚙️ **Instant Download** After Purchase
- ⚙️ **100% Money Back** Guarantee
- ⚙️ **365 Days** Free Update
- ⚙️ **800,000+** Satisfied Customers



**QUESTION 1**

Scenario: Users complain that it is taking significantly longer to see their Desktop OS machines compared to yesterday. The Helpdesk team is able to see active connections while the users are waiting. What could a Citrix Administrator view to compare the Desktop OS machine launch times?

- A. AAA logs in NetScaler Gateway
- B. Event log on the Citrix StoreFront server
- C. Logon duration details from Citrix Director
- D. Configuration logging report on Citrix Studio

Correct Answer: C

QUESTION 2

Which policy must a Citrix Administrator modify on the NetScaler to allow mobile devices to connect to a XenDesktop environment where two-factor authentication is NOT used?

- A. LDAP
- B. Session
- C. Authentication
- D. TrafficDomain

Correct Answer: B

QUESTION 3

A Citrix Administrator is given the task of creating a new maintenance version for a vDisk from an existing maintenance disk. Which task does the administrator need to complete before the new maintenance version of the vDisk is created?

- A. Merge the vDisk.
- B. Promote the version.
- C. Release vDisk locks.
- D. Unassign the vDisk from selected devices.

Correct Answer: A

QUESTION 4

Scenario: Due to changes in the network infrastructure, the IP addresses of the Delivery Controllers will be changing.



There are 2000 Desktop OS machines in the environment.

What should a Citrix Administrator do to reduce the impact of the IP address changes on the environment?

- A. Update the beacons in StoreFront to reflect the updated IP addresses.
- B. Change the DNS entries for the Delivery Controllers to the new IP addresses.
- C. Run the Provisioning Services Configuration Wizard and update the IP addresses of the Delivery Controllers.
- D. Remove the Delivery Controller from the site, change the host file entries, and add the Delivery Controller back to the site.

Correct Answer: B

QUESTION 5

In which node within Citrix Studio could a Citrix Administrator modify the operating system type for Machine Creation Services?

- A. Hosting
- B. Policies
- C. Controllers
- D. Machine Catalogs

Correct Answer: D

QUESTION 6

Scenario: Employees in an organization work two separate shifts and use pooled-random Desktop OS machines. When employees working at night end their shift, they disconnect from their Desktop OS machines. When employees working

the day shift log on, their Desktop OS machines are NOT available.

What could a Citrix Administrator do to resolve this issue?

- A. Configure the '\\Reboot Schedule\\' in Citrix policies.
- B. Set '\\When Disconnected\\' to Suspend during peak hours.
- C. Set '\\When Disconnected\\' to Shutdown during peak hours.
- D. Adjust Power Management settings in the Active Directory Group Policy.

Correct Answer: D

**QUESTION 7**

Scenario: A user receives the following error when attempting to log in to a Desktop OS machine:

The desktop "Finance1" is temporarily unavailable due to planned maintenance. A Citrix Administrator verified that the Finance1 Delivery Group is NOT in maintenance mode, and no other users report virtual machine issues from the same Delivery Group.

How could the administrator resolve this issue?

- A. Restart the Desktop OS machine.
- B. Turnoff the maintenance mode on the specific Desktop OS machine.
- C. Turn off maintenance mode on the XenServer hosting the user's Desktop OS machine.
- D. Shutdown the user's Desktop OS machine and provision a new Desktop OS machine for the specific user.

Correct Answer: B

QUESTION 8

Members of a new Desktop group are unable to launch Desktop OS machines assigned to them. What should a Citrix Administrator do to troubleshoot this issue?

- A. Recreate the master image that was used to provision the Desktop OS machines.
- B. Update Citrix Receivers on all user devices to connect with the Desktop OS machines.
- C. Enable the Virtual Delivery Agents logs on the Desktop OS machines to find out the underlying issues.
- D. Configure StoreFront servers to connect with the Data Collectors to enumerate applications/Desktop OS machines.

Correct Answer: C

QUESTION 9

SIMULATION Scenario: Members of the HR user group at CCH need access to desktops running Windows 8. The desktops provided to HR users must be in a separate device collection named HR. As part of a pilot, a Citrix Administrator must use the Provisioning Services Console to create the device collection and initially four target devices with plans to add 20 more. The target devices named Win801T Win802. Win803 and Win804 should be assigned the CCH_Win8 vDisk and those devices should be assigned to the HR OU. XenDesktop is NOT being used for the HR team at the moment. The hypervisor information for the environment is: XenServer IP Address: 192.168.10.5 Username: root Password: Password 1 Tasks:

1.

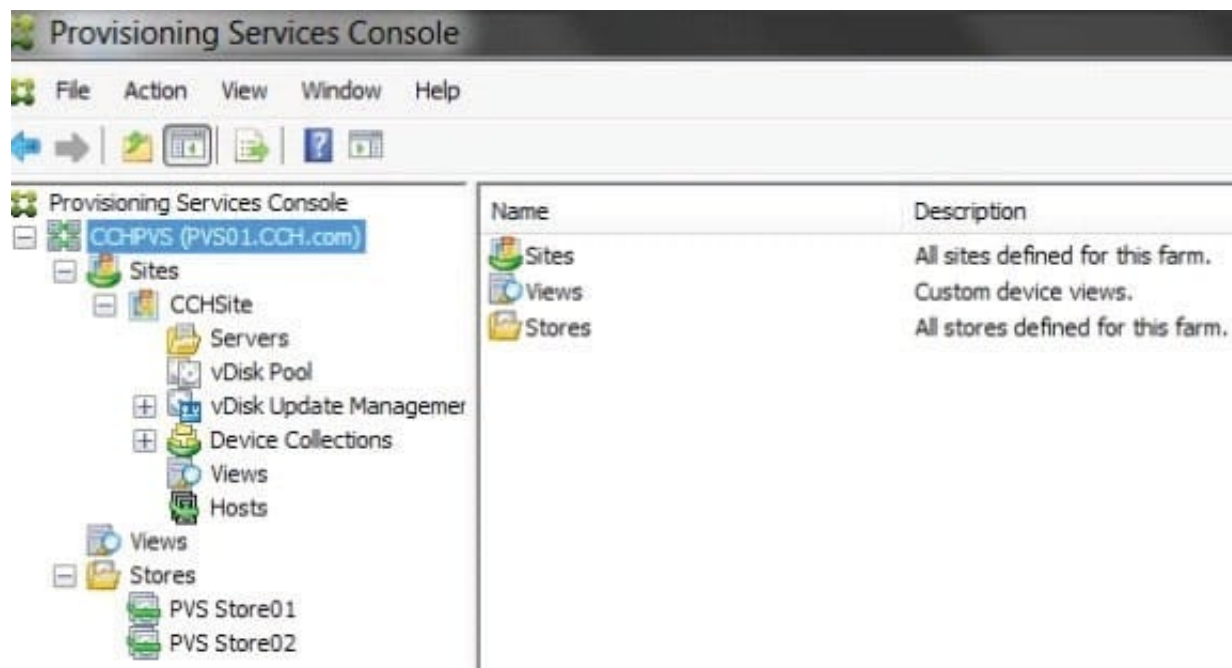
Create a device collection named HR.

2.

Create four target devices named Win801, Win802. Win803 and Win804, and add the target devices to the HR device



collection.



3. Ensure the target devices are configured to meet the requirements outlined in the scenario.

Correct Answer:

- 1) In Provisioning Services Console, right click on "Device" and click on Create Device Collection.
- 2) In the "General" type in the name "HR" and click on OK.
- 3) Right click on "CCHSite" node and select Streamed Virtual Machine Setup.
- 4) From the "Hypervisor connection" dialog window type in the Hypervisor IP address, username and password provided then click on Next.
- 5) From the "Virtual machine template" dialog window select the correct virtual machine template then click on Next.
- 6) From the "vDisk" dialog window select CCH_Win8 then click on Next.
- 7) From the "Collection" dialog window select HR from the drop-down window then click on Next.
- 8) From the "Virtual Machines" dialog window, increase the "Number of virtual machines to create" to 4 then click on Next.
- 9) From the "Active Directory" dialog window verify "Create new accounts" is selected then click on Next.
- 10) From the "Active Directory accounts and location" dialog windows select the HR OU; in the "Account naming scheme" field type in the "Basename#" of Win8##, select 0-9 from the drop down to the right, then click on Next.
- 11) From the "Summary" dialog windows click on Finish.
- 12) When the devices are finished creating click on Done.
- 13) You can verify the new devices were created correctly in the HR Device Collection you created initially.

**QUESTION 10**

Scenario: Only users with Desktop OS machines accessed with pass-through authentication are receiving the following error message when they try to launch hosted applications: '\\Unable to launch as the application is not currently available.\\' How could a Citrix Administrator resolve this issue?

- A. Using a Citrix policy
- B. Through a registry setting
- C. Using a PowerShell cmdlet
- D. Through the Delivery Group setting

Correct Answer: C

QUESTION 11

Scenario: A company, OrgA, has an existing XenDesktop site and recently acquired another company, OrgB. OrgB also has an existing XenDesktop site and multiple thin clients deployed using the online plug-in. OrgA wants all employees to use the current OrgA StoreFront store.

Which two changes in StoreFront must a Citrix Administrator make to meet the requirements of the scenario? (Choose two.)

- A. Enable Remote Access.
- B. Export the Multi-store Provisioning file.
- C. Add the FQDN or IP address of the Delivery Controller in OrgB to the existing store.
- D. Create a new store using the FQDN or IP address of the Delivery Controllers in OrgA and OrgB.
- E. Go to the specific store on the StoreFront servers and enable the '\\Configure XenApp for Services Support\\' feature.

Correct Answer: CE

QUESTION 12

Scenario: Users report slow application launch times after a master image update. These users have critical deadlines and need access to their machines as soon as possible. How should a Citrix Administrator resolve the slow application launch times?

- A. Revert to the previous image.
- B. Reset user profiles using Citrix Director.
- C. Restart the impacted Desktop OS machines.



D. Migrate the Desktop OS machines to a different host.

Correct Answer: D

QUESTION 13

Scenario: A Citrix Administrator uses Machine Creation Services to provision Desktop OS machines in an environment. The administrator needs to update an application that is locally installed on the Desktop OS machines. Which action should the administrator take after updating the application to ensure that users are provided with the updated application?

- A. Update the master image, then update the Delivery Group.
- B. Update the session machine catalog, then update the Delivery Group.
- C. Update the master image, then update the appropriate session machine catalog.
- D. Update the Desktop OS machines, then update the appropriate session machine catalog.

Correct Answer: C

QUESTION 14

A Citrix Administrator returns from vacation to find that during peak logon times, users are experiencing extremely slow login times, with the typical login taking over 120 seconds. How should the administrator generate the information needed to determine the changes that have led to this issue?

- A. Launch the Create Custom Report wizard from Citrix Studio.
- B. Run a custom report for the Delivery Group from Citrix Studio.
- C. Go to the C:\XDLogs and print the log file on the Delivery Controller.
- D. Create a custom view and print the results from the Delivery Controller.

Correct Answer: A

QUESTION 15

SIMULATION

Scenario: A Citrix Administrator has prepared two server OS machines to host applications. The administrator used Machine Creation Services to provision the server OS machines. The server OS machines are part of the Windows 2012

Servers machine catalog. The Server 2012 Hosted Desktops and Applications delivery group is assigned to the Windows 2012 Servers machine catalog.

The administrator was instructed to roll out Firefox as a hosted application and has installed Firefox on the master



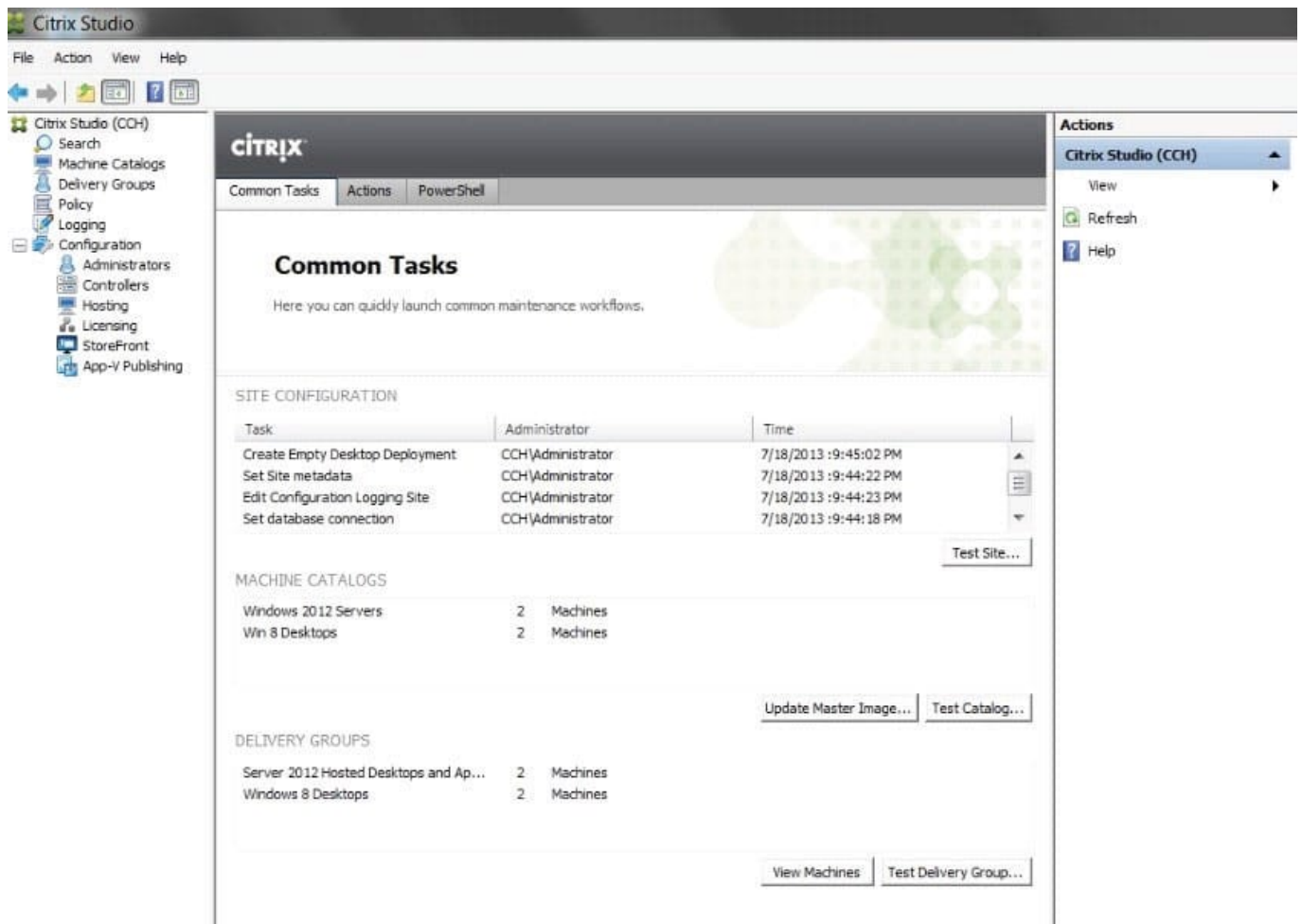
server OS machine named Win2012-Master. Now, the administrator needs to update the server OS machines so that Firefox is

available as a hosted application to only the Finance user group through StoreFront or Citrix Receiver upon the next reboot of the server OS machines. The Finance user group is a member of the Server 2012 Hosted Desktops and

Applications delivery group.

Tasks:

Update the Windows 2012 Servers machine catalog to meet the requirements outlined in the scenario.



Correct Answer:

Update Machine Catalog

1) In Citrix Studio, highlight the "Citrix Studio" node at the top-left of the tree, under "Common Tasks" under the "Machine Catalog" section, highlight the Windows Server 2012 Machine Catalog and click on the Update master image button.

This will launch the "Update machine" wizard. (Note-the virtual machine should be powered off before updating to remove any locks.)

2) In the "Update Machine" wizard click on Next.



3) From the "Master Image" dialog window, select the Win2012-Master from the list of snapshots and virtual machines then click on Next.

4) From the "Rollout Strategy" dialog window, verify that the "On the next shut down (not right now)" option is selected and then click on Next.

5) From the "Summary" dialog window click on Finish. Update Delivery Group

1) In Citrix Studio, highlight "Delivery Groups" node at the top-left of the tree, select the Delivery Groups tab, highlight the Server 2012 Hosted Desktops and Applications delivery group, under the right-side "Actions" pane click on Add

Applications.

2) From the "Getting Started with Applications" dialog window click on Next.

3) From the "Applications" dialog window click on select Firefox from the list of "Selected Applications" or click on Add applications Manually and type in the path of the application then click on Next.

4) From the "Summary" dialog window click on Finish.

5) In Citrix Studio, highlight "Delivery Groups" node at the top-left of the tree, select the Delivery Groups tab, highlight the Server 2012 Hosted Desktops and Applications delivery group, under the right-side "Actions" pane click on View

Applications. This will display the published applications available under the "Applications" tab.

6) Highlight Firefox under the "Applications" tab and then click on Properties under the right-side "Actions" pane.

7) From the "Application Settings" dialog window select Limit Visibility.

8) From the "Limit Visibility" dialog window select "Limit visibility for this application to the users listed below", click on Add Users, and the Finance group then click on Ok.

[1Y0-201 Practice Test](#)

[1Y0-201 Study Guide](#)

[1Y0-201 Exam Questions](#)