



# 1Y0-200<sup>Q&As</sup>

Managing Citrix XenDesktop 7 Solutions Exam

## Pass Citrix 1Y0-200 Exam with 100% Guarantee

Free Download Real Questions & Answers **PDF** and **VCE** file from:

<https://www.pass4itsure.com/1Y0-200.html>

100% Passing Guarantee  
100% Money Back Assurance

Following Questions and Answers are all new published by Citrix  
Official Exam Center

- ⚙ **Instant Download** After Purchase
- ⚙ **100% Money Back** Guarantee
- ⚙ **365 Days** Free Update
- ⚙ **800,000+** Satisfied Customers



**QUESTION 1**

Scenario: A Citrix Administrator configures Citrix Profile Management on users\\' virtual desktops so that user settings can be retained between sessions. Users report that they have to set up applications every time they launch a new session. To resolve the issue, the administrator should ensure that the \_\_\_\_\_ and the \_\_\_\_\_. (Choose the two correct phrases to complete the sentence.)

- A. Profile Management path is correctly configured
- B. Profile Management Service is running on the virtual desktops
- C. Profile Management definition has been created in Citrix Studio
- D. Profile Management .INI file has NOT been deleted from the virtual desktops

Correct Answer: AB

---

**QUESTION 2**

Users report that when they work remotely on weekends, they experience noticeably longer desktop launch times.

Which action should a Citrix Administrator take to resolve this issue?

- A. Set peak hours for the weekend.
- B. Analyze the logon times in Citrix Director.
- C. Schedule the weekend backups to run at night.
- D. Increase the number of active machines during the weekends.

Correct Answer: D

---

**QUESTION 3**

A Citrix Administrator has updated the Finance vDisk to include Microsoft Office 2013. The administrator has tested the Finance vDisk and now needs to merge all updates to the vDisk to maximize and reclaim disk space. Members of the Finance user group are expected to have access to Microsoft Office 2013 when they log on to desktops to which the Finance vDisk is assigned.

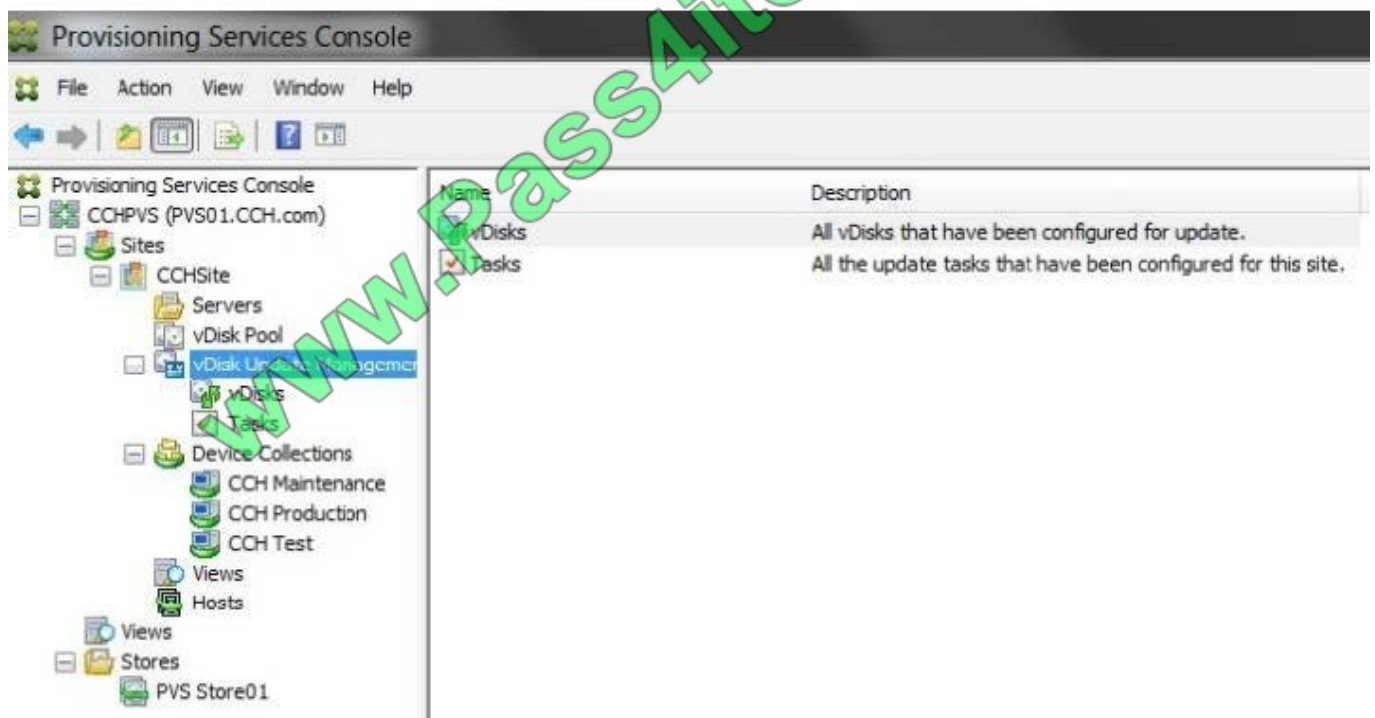
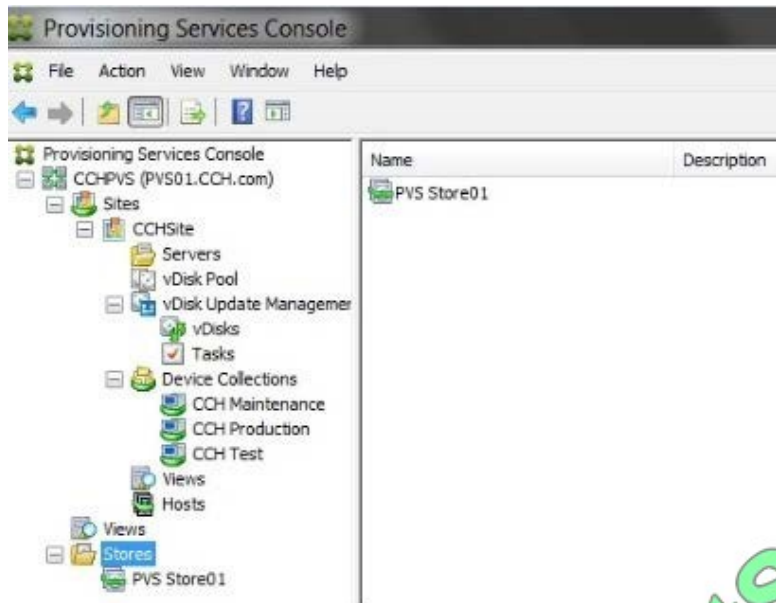
Tasks:

1.  
Merge all updates to the vDisk.
2.  
Ensure members of the Finance user group have access to Microsoft Office 2013 as stated in the scenario.



3.

Complete the tasks that are necessary to meet the requirements outlined in the scenario.



Correct Answer: Review the steps and solution in below.

#### Merging Differencing Disks

Right-click on a vDisk in the Console, then select the Versions menu option. The vDisk Versions dialog appears.

Click the Merge button. The Merge dialog appears.



Select to perform a Merged Updates or Merged Base merge.

To merge all differencing disks to a single differencing disk (not to the base disk image), select the Merged Updates option.

To fully merge all differencing disks into a new base disk, select the Merged Base option.

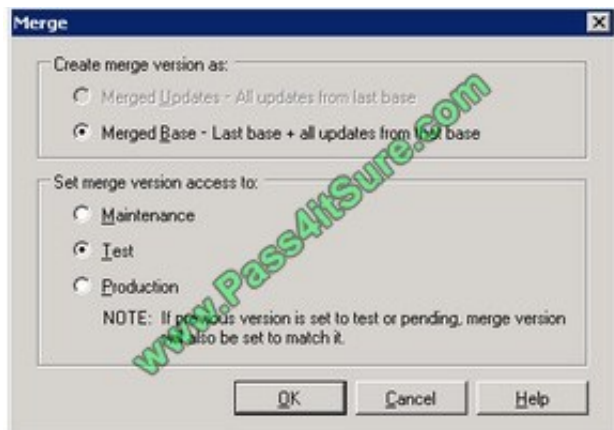
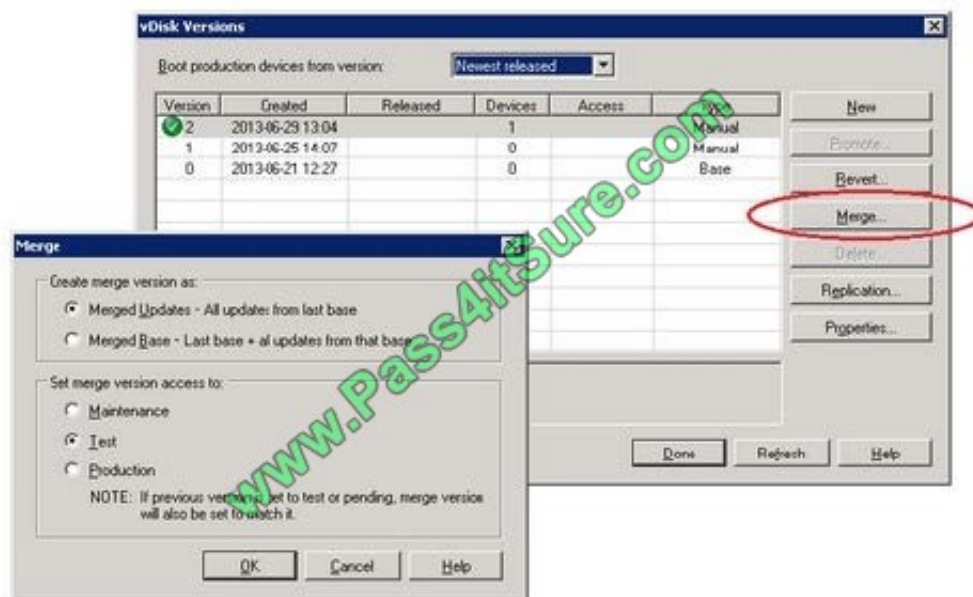
Select the access mode (Production, Maintenance, or Test) for this version after the merge completes. If no access type is selected, the vDisk mode setting selected for automatic merge, on the Farm Properties\ vDisk Version tab, is selected

by default.

Click OK to begin the merge process.

The time it takes to complete the merge process varies based on the merge method selected and the number of differencing disks to merge. After the merge successfully completes, the new version displays in the vDisk Versions dialog. The

Type column displays either Merge Base if a full merge was selected, or Merge if a partial merge was selected.



Create Application Delivery Group



1.

Start the Delivery Group wizard in Citrix Studio. Select the machine

**Machines**

Select a Machine Catalog:

Catalog	Type	Machines
<input checked="" type="radio"/> WS2012 XenApp	RDS Manual Random	1

Choose number of machines to add:  - +

2.

When using server based operating systems you can deliver a full blow desktop complete with the menu bar (sans the Start Button on WS2012), just applications, or a combination of both. Select just Applications,

**Delivery Type**

You can use the machines in the Catalog to deliver desktops and applications to your users.

[Learn more](#)

Use the machines to deliver:

- ☐ Desktops
- ☐ Desktops and Applications
- ☒ Applications

3.

Specify the users or groups that need these applications.



4.

Next up we can start adding the applications that are installed on our server





## Applications

The applications listed below were either found on the master image(s) or the App-V publishing server. You can also add applications manually (from other network locations) and edit the properties for individual applications.

[Learn more](#)

Select applications:

⚠ No applications were found on the master image(s).		<a href="#">Find applications</a>
<input type="checkbox"/> Application name	↓	Location

### Add Applications Manually

#### Add an Application Manually

You can manually add applications from the virtual desktop machine or from a different network location.

[Learn more](#)

Path to the executable file:

Command line argument (optional):

Working directory:

Application name (for user):

Application name (for administrator):

5.

Next up we create a delivery group name.



## Summary

Source Machine Catalog:	WS2012 XenApp
Machine type:	Windows Server OS
Allocation type:	Random
Number of machines added:	1 unassigned
Delivery type:	Applications
Users:	CONTOSO\Domain Users
Applications:	2
Scopes:	-

Delivery Group name:

Basic Apps

Delivery Group description for users: (Optional)

6.

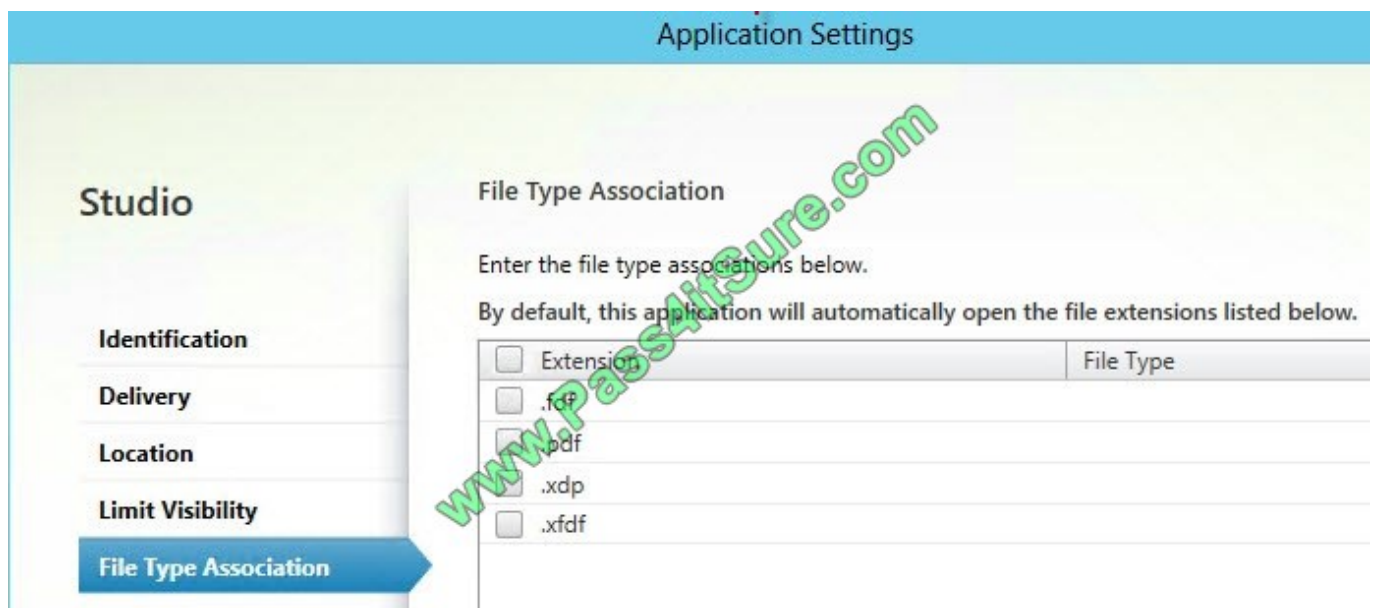
Refresh my app list to test the application





You can now launch your apps and they will appear in their own window on your local computer.

7. If you want to further customize individual applications (say limit an app to a sub-group of users or change file type associations), then you can open the properties of the application in Citrix Studio.



If you check the Start Menu or Start screen on your local computer, you will now see icons for the published applications. This lets you seamlessly launch them just as if they were a native application. Launching will probably be a bit slower since behind the scenes it logs you into the XenApp server, launches the process, then remotes the window back to your client.



#### QUESTION 4

Scenario: A Citrix Administrator implemented a Citrix policy to set up Citrix Profile Management. After the administrator implemented the policy, users are still being required to set up their applications each time they logon. What is preventing the existing policy from working?

- A. The .INI file does NOT exist.
- B. There are no filters set within the policy.
- C. The path specified to save the profile is incorrect.
- D. The users need to be removed from the Citrix profile group.

Correct Answer: C

---

#### QUESTION 5

A Citrix Administrator opens Citrix Studio and is unable to make any changes. What is a likely cause of this issue?

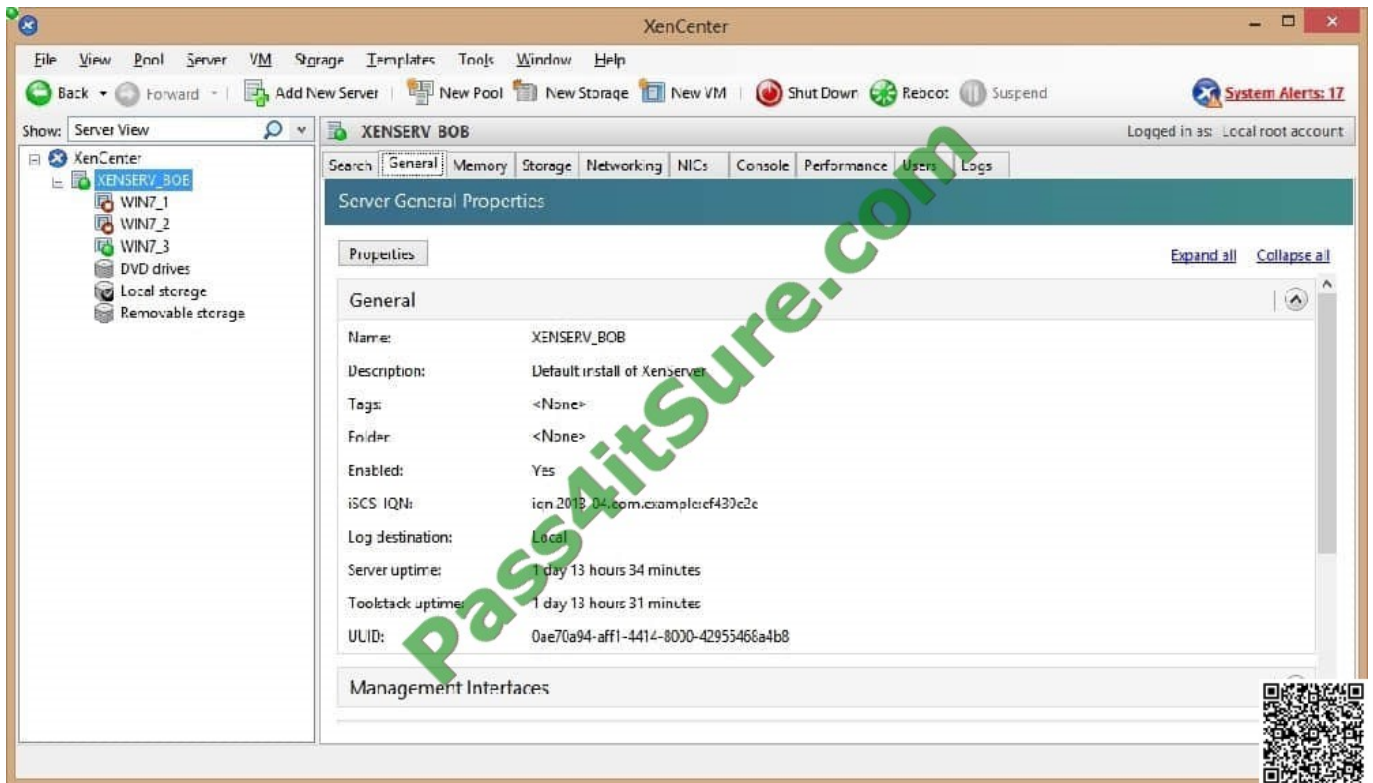
- A. TheXenDesktop database is down.
- B. The Configuration Logging database is unavailable.
- C. The administrator is assigned the Desktop Catalog role.
- D. A firewall is blocking traffic over port 1433 from the administrator's device.

Correct Answer: B

---

#### QUESTION 6

A Citrix Administrator notices that several virtual desktops in Citrix Studio are unregistered. Click the Exhibit button to view a screenshot of the XenCenter Console.



Based on the information in the screenshot, why are the virtual desktops unregistered?

- A. XenServer is NOT a pool member.
- B. XenServer is in maintenance mode.
- C. The virtual machines are NOT running.
- D. The virtual machines have been suspended.

Correct Answer: C

#### QUESTION 7

When using personal vDisk, where could a Citrix Administrator find the output diagnostic log in order to see any errors that are occurring?

- A. Application Event Log
- B. Site Monitoring database
- C. Citrix Configuration Logging database
- D. A file location determined by the administrator

Correct Answer: D



### QUESTION 8

Which action could a Citrix Administrator take to provide management with a daily report of changes in the environment?

- A. Download the system report in the HDX panel.
- B. Create an HTML report in configuration logging.
- C. Export the event logs from all the Delivery Controllers.
- D. Provide access to the historical trends in Citrix Director.

Correct Answer: B

---

### QUESTION 9

The Export Provisioning File option in the StoreFront Management Console contains \_\_\_\_\_. (Choose the correct phrase to complete the sentence.)

- A. the information required to rebuild a store
- B. connection details for the Delivery Controller
- C. connection details for the hosting infrastructure
- D. connection details for stores, including any Access Gateway deployments and beacons configured for the stores

Correct Answer: D

---

### QUESTION 10

Scenario: A Citrix Administrator implements StoreFront to replace Web Interface in an environment. The IT director wants to upgrade the version of Receiver on all workstations. Which two components could the administrator use to deploy Receiver? (Choose two.)

- A. StoreFront
- B. Group Policy
- C. AppController
- D. Delivery Controller

Correct Answer: AB

---

### QUESTION 11



Scenario: Users who connect through the NetScaler are receiving the following error after they log on with their username and password:

Http/1.1 Internal Server Error 29

A Citrix Administrator checks the status of the NetScaler and does NOT find any alerts on the System Log.

Which server could be causing this error?

- A. Database
- B. StoreFront
- C. Citrix Licensing
- D. Domain Controller

Correct Answer: B

---

## QUESTION 12

Scenario: A Citrix Administrator is publishing a text editor for developers to use when they need to edit their configuration files. The administrator needs to ensure that the text editor launches when a developer attempts to open a configuration file.

What should the administrator implement to ensure that the hosted application launches when a developer attempts to edit a configuration file?

- A. Application Security
- B. Applications Strings
- C. Content Redirection
- D. Advanced Access Control

Correct Answer: C

[1Y0-200 PDF Dumps](#)

[1Y0-200 VCE Dumps](#)

[1Y0-200 Study Guide](#)



To Read the [Whole Q&As](#), please purchase the [Complete Version](#) from [Our website](#).

## Try our product !

100% Guaranteed Success

100% Money Back Guarantee

365 Days Free Update

Instant Download After Purchase

24x7 Customer Support

Average 99.9% Success Rate

More than 800,000 Satisfied Customers Worldwide

Multi-Platform capabilities - [Windows](#), [Mac](#), [Android](#), [iPhone](#), [iPod](#), [iPad](#), [Kindle](#)

We provide exam PDF and VCE of Cisco, Microsoft, IBM, CompTIA, Oracle and other IT Certifications. You can view Vendor list of All Certification Exams offered:

<https://www.pass4itsure.com/allproducts>

## Need Help

Please provide as much detail as possible so we can best assist you.

To update a previously submitted ticket:



 <b>One Year Free Update</b> Free update is available within One Year after your purchase. After One Year, you will get 50% discounts for updating. And we are proud to boast a 24/7 efficient Customer Support system via Email.	 <b>Money Back Guarantee</b> To ensure that you are spending on quality products, we provide 100% money back guarantee for 30 days from the date of purchase.	 <b>Security &amp; Privacy</b> We respect customer privacy. We use McAfee's security service to provide you with utmost security for your personal information & peace of mind.
---	---	--

Any charges made through this site will appear as Global Simulators Limited.

All trademarks are the property of their respective owners.

Copyright © pass4itsure, All Rights Reserved.