

**Exam : 1T6-511**

**Title : Network Analysis &  
Troubleshooting**

**Version : DEMO**

www.Pass4itSure.com

1. To save a trace file as a compressed file from the Sniffer you must use the extension:

- A. CAP
- B. zip
- C. enc
- D. caz

**Answer: D**

2. This is a screen from the Decode Summary window.

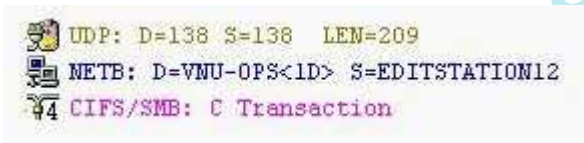
Source Address	Dest Address	Summary
001111195130	Broadcast	ARP: C PA=[192.168.0.26] PRO=IP
Dell 3BF149	001111195130	ARP: R PA=[192.168.0.26] HA=Dell 3BF149 PRO=IP
Cisco 32D494	Bridge_Group_Addr	BPDU: S: Pri=8000 Port=8022 Root: Pri=8000 Addr=00B06432D480 Cost=0
[192.168.0.1]	[192.168.0.26]	ICMP: Echo
[192.168.0.26]	[192.168.0.1]	ICMP: Echo reply
[192.168.0.1]	[192.168.0.26]	ICMP: Echo
[192.168.0.26]	[192.168.0.1]	ICMP: Echo reply

Which of the following statements is true for this capture?

- A. 192.168.0.1 initiated a ping
- B. 192.168.0.26 initiated a ping
- C. 192.168.0.26 has a MAC address of 001111195130
- D. 192.168.0.1 should not repeat the ICMP: Echo

**Answer: A**

3. This is the Detail window for this question.



Which of the following statements is true for this Decode Detail window?

- A. One of the UDP ports should be ephemeral
- B. UDP is the Station layer protocol
- C. NETB is the Connection layer protocol
- D. UDP is the Transport layer protocol

**Answer: D**

4. When troubleshooting a slow application, which of the following could be indicators of an application-specific problem?

- A. Commands with timely responses
- B. Large or full-size frames
- C. Long Delta times before each client request
- D. None of the above

**Answer: D**

5. This is the Decode Hex window for this question.

```

00000000: 00 11 11 19 51 30 00 10 a4 b8 90 f5 08 00 45 00 ....Q0..x_08..E.
00000010: 00 64 bf a2 40 00 80 06 8b c2 c0 a8 00 02 42 62 .d;@.€.AA`..Bb
00000020: ac 22 3b b5 05 2e b7 8b 67 c7 46 94 2e 08 50 18 -";µ...<gCF`..P.
00000030: 44 70 5b 3d 00 00 3b 30 20 4c 4f 47 49 4e 20 74 Dp[=..;0 LOGIN t
00000040: 65 63 68 73 75 70 70 74 32 20 71 77 65 72 74 79 echsuppt2 qwerty
00000050: 20 31 37 34 30 20 31 20 31 35 35 37 37 32 20 71 1740 1 155772 q
00000060: 77 65 72 74 79 62 61 62 65 20 64 69 6e 67 64 6f wertybabe dingdo
00000070: 6e 67 ng
    
```

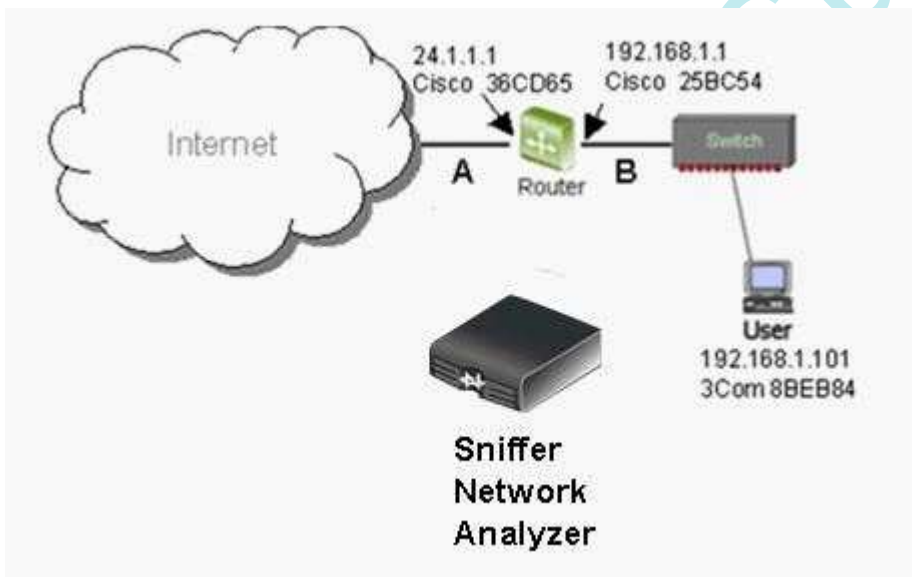
If you were going to create a Data Pattern filter on LOGIN it would be helpful to know that the letter is at offset \_\_\_\_\_.

- A. 38
- B. 39
- C. 3A D.

3B Answer:

B

6. This is the network map.

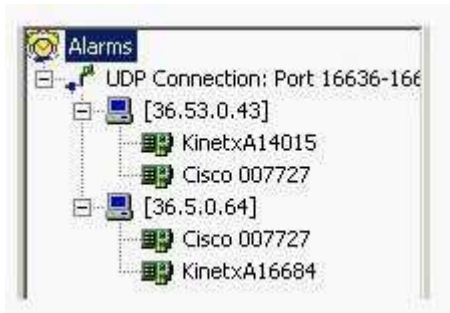


If a Sniffer Network Analyzer captured a frame at point A going from User to a server somewhere on the Internet, that frame would contain: (Choose all that apply.)

- A. An IP destination address of 24.1.1.1
- B. An IP destination address of the server
- C. A DLC destination address of Cisco 36CD65
- D. A DLC source address of Cisco 36CD65
- E. An IP source address of 192.168.1.101

Answer: BDE

7. This is a screen from the Expert Objects detail.



Which of the following statements are true for this Object detail screen? (Choose all that apply.)

- A. This is the detail for a Duplicate IP Address alarm
- B. This is the detail for a Local Routing alarm
- C. KinetxA14015 is a robable Prouter
- D. This is the detail for a Window Exceeded alarm
- E. This is a connectionless Conversation

**Answer:** BE

8. The only frame type that contains a DLC Ethertype field is:

- A. Novell Law frame
- B. Ethernet version two
- C. 802.3 frame
- D. 802.3 with SNAP

**Answer:** B

9. Which of the following protocols are summarized when the Expert Overview pane and Station layer are selected?

- A. ARP, Ethernet, Cisco CDP
- B. ICMP, IP, IPX
- C. TCP, UDP
- D. NetBIOS, SMB

**Answer:** B

10. Which of the following best describes the function of the Transport layer of the OSI Reference Model?

- A. Packet framing
- B. Reports upper-layer errors
- C. Connection management
- D. Manages user sessions

**Answer:** C

11. OSI layer 4 is concerned with \_\_\_\_\_.

- A. ACKs and flow control working correctly

- B. Routing or frame delivery
- C. Connections working correctly
- D. Physical problems

**Answer: A**

12. The OSI Transport layer corresponds to the Expert \_\_\_\_\_ layer.

- A. Data Link
- B. Connection
- C. Session
- D. Network

**Answer: B**

13. Which of the following resources in the Sniffer is useful in identifying the endpoints in conversations in a captured trace?

- A. Expert DLC Layer Summary
- B. Pattern Match filter
- C. Matrix
- D. All of the above

**Answer: C**

14. A sound troubleshooting methodology includes as part of the process a focus on finding imbalances or errors.

- A. TRUE
- B. FALSE

**Answer: A**

15. Which of the following is recommended as part of the troubleshooting methodology?

- A. Use the Expert and Summary window first
- B. Use the Detail window first
- C. Use a top-down approach
- D. Use the Hex window first

**Answer: A**

16. The interframe spacing in Fast Ethernet is \_\_\_\_\_.

- A. 9.6 milliseconds
- B. 96.0 nanoseconds
- C. .96 microseconds
- D. .96 milliseconds

**Answer: C**

17. This is the Summary window for this question.

No.	Status	Source Address	Dest Address	Summary
29	[A]	[10.10.10.100]	[10.10.10.97]	TCP: D=80 S=4123 SYN SEQ=20653579 LEN=0 WIN=65535
30	[B]	[10.10.10.97]	[10.10.10.100]	TCP: D=4123 S=80 SYN ACK=20653580 SEQ=139386105 LEN=0 WIN=4128
31	[A]	[10.10.10.100]	[10.10.10.97]	TCP: D=80 S=4123 ACK=139386106 WIN=65535
32	[A]	[10.10.10.100]	[10.10.10.97]	HTTP: C Port=4123 GET /exec/show/device/portinfo/CR HTTP/1.1
33	[B]	[10.10.10.97]	[10.10.10.100]	HTTP: R Port=4123 HTTP/1.0 Status=Unauthorized
34	[A]	[10.10.10.100]	[10.10.10.97]	TCP: D=80 S=4123 FIN ACK=139386444 SEQ=20653754 LEN=0 WIN=65197
35	[A]	[10.10.10.100]	[10.10.10.97]	TCP: D=80 S=4124 SYN SEQ=20653603 LEN=0 WIN=65535
36	[B]	[10.10.10.97]	[10.10.10.100]	TCP: D=4123 S=80 ACK=20653755 WIN=3954
37	[B]	[10.10.10.97]	[10.10.10.100]	TCP: D=4124 S=80 SYN ACK=20653604 SEQ=3744768563 LEN=0 WIN=4128
38	[A]	[10.10.10.100]	[10.10.10.97]	TCP: D=80 S=4124 ACK=3744768564 WIN=65535
39	[A]	[10.10.10.100]	[10.10.10.97]	HTTP: C Port=4124 GET /exec/show/device/portinfo/CR HTTP/1.1
40	[B]	[10.10.10.97]	[10.10.10.100]	TCP: D=4123 S=80 FIN ACK=20653755 SEQ=139386444 LEN=0 WIN=3954
41	[A]	[10.10.10.100]	[10.10.10.97]	TCP: D=80 S=4123 ACK=139386445 WIN=65197
42	[B]	[10.10.10.97]	[10.10.10.100]	TCP: D=4124 S=80 ACK=20653825 WIN=3907

Which frames are part of the session close process in this example? (Choose all that apply.)

- A. 34
- B. 36
- C. 38
- D. 40
- E. 41

**Answer:** ABDE

18. In the Sniffer Expert interface, the Service layer objects relate to which layer of the OSI reference model?

- A. Application layer B. Presentation layer C. Session layer
- D. Transport layer

**Answer:** A

19. This is the Summary window for this question.

No.	St	Source Address	Dest Address	Summary	Delta Time
28		[192.168.0.1]	[192.168.0.26]	Telnet: C PORT=3043 IAC Won't Echo	0.000.413
29		[192.168.0.26]	[192.168.0.1]	Telnet: R PORT=3043 login:	0.000.246
30		[192.168.0.1]	[192.168.0.26]	Telnet: C PORT=3043 IAC Do Echo	0.000.061
31		[192.168.0.26]	[192.168.0.1]	TCP: D=3043 S=23 ACK=3877413358 WIN=	0.037.679
32		[192.168.0.1]	[192.168.0.26]	Telnet: C PORT=3043 u	1.226.999
33		[192.168.0.26]	[192.168.0.1]	TCP: D=3043 S=23 ACK=3877413359 WIN=	0.000.262
34		[192.168.0.26]	[192.168.0.1]	Telnet: R PORT=3043 u	0.000.279
35		[192.168.0.1]	[192.168.0.26]	Telnet: C PORT=3043 s	0.093.591
36		[192.168.0.26]	[192.168.0.1]	Telnet: R PORT=3043 s	0.000.434
37		[192.168.0.1]	[192.168.0.26]	Telnet: C PORT=3043 e	0.090.477
38		[192.168.0.26]	[192.168.0.1]	Telnet: R PORT=3043 e	0.000.532
39		[192.168.0.1]	[192.168.0.26]	Telnet: C PORT=3043 r	0.060.970
40		[192.168.0.26]	[192.168.0.1]	Telnet: R PORT=3043 r	0.000.432
41		[192.168.0.1]	[192.168.0.26]	TCP: D=23 S=3043 ACK=15813354 WIN=17	0.116.841
42		[192.168.0.1]	[192.168.0.26]	Telnet: C PORT=3043 2	0.725.625
43		[192.168.0.26]	[192.168.0.1]	Telnet: R PORT=3043 2	0.000.517
44		[192.168.0.1]	[192.168.0.26]	TCP: D=23 S=3043 ACK=15813355 WIN=17	0.179.068
45		[192.168.0.1]	[192.168.0.26]	Telnet: C PORT=3043 <OD>	1.439.456
46		[192.168.0.26]	[192.168.0.1]	Telnet: R PORT=3043 <OD0A>	0.000.529
47		[192.168.0.1]	[192.168.0.26]	TCP: D=23 S=3043 ACK=15813357 WIN=17	0.169.318
48		[192.168.0.26]	[192.168.0.1]	Telnet: R PORT=3043 Password:	0.000.268
49		[192.168.0.1]	[192.168.0.26]	TCP: D=23 S=3043 ACK=15813367 WIN=17	0.200.892
50		[192.168.0.1]	[192.168.0.26]	Telnet: C PORT=3043 p	1.061.153

Examine this capture closely. Which statement is true?

- A. This appears to be a normal Telnet session
- B. Telnet is a session layer protocol
- C. The delta times in frames 32, 45, and 50 would warrant investigation
- D. None of the above

**Answer: A**

20. This is the Summary window for this question.

No.	St	Source Address	Dest Address	Summary	Delta Time
28		[192.168.0.1]	[192.168.0.26]	Telnet: C PORT=3043 IAC Won't Echo	0.000.413
29		[192.168.0.26]	[192.168.0.1]	Telnet: R PORT=3043 login:	0.000.246
30		[192.168.0.1]	[192.168.0.26]	Telnet: C PORT=3043 IAC Do Echo	0.000.061
31		[192.168.0.26]	[192.168.0.1]	TCP: D=3043 S=23 ACK=3877413358 WIN=	0.037.679
32		[192.168.0.1]	[192.168.0.26]	Telnet: C PORT=3043 u	1.226.999
33		[192.168.0.26]	[192.168.0.1]	TCP: D=3043 S=23 ACK=3877413359 WIN=	0.000.262
34		[192.168.0.26]	[192.168.0.1]	Telnet: R PORT=3043 u	0.000.279
35		[192.168.0.1]	[192.168.0.26]	Telnet: C PORT=3043 s	0.093.591
36		[192.168.0.26]	[192.168.0.1]	Telnet: R PORT=3043 s	0.000.434
37		[192.168.0.1]	[192.168.0.26]	Telnet: C PORT=3043 e	0.090.477
38		[192.168.0.26]	[192.168.0.1]	Telnet: R PORT=3043 e	0.000.532
39		[192.168.0.1]	[192.168.0.26]	Telnet: C PORT=3043 r	0.060.970
40		[192.168.0.26]	[192.168.0.1]	Telnet: R PORT=3043 r	0.000.432
41		[192.168.0.1]	[192.168.0.26]	TCP: D=23 S=3043 ACK=15813354 WIN=17	0.116.841
42		[192.168.0.1]	[192.168.0.26]	Telnet: C PORT=3043 2	0.725.625
43		[192.168.0.26]	[192.168.0.1]	Telnet: R PORT=3043 2	0.000.517
44		[192.168.0.1]	[192.168.0.26]	TCP: D=23 S=3043 ACK=15813355 WIN=17	0.179.068
45		[192.168.0.1]	[192.168.0.26]	Telnet: C PORT=3043 <OD>	1.439.456
46		[192.168.0.26]	[192.168.0.1]	Telnet: R PORT=3043 <OD0A>	0.000.529
47		[192.168.0.1]	[192.168.0.26]	TCP: D=23 S=3043 ACK=15813357 WIN=17	0.169.318
48		[192.168.0.26]	[192.168.0.1]	Telnet: R PORT=3043 Password:	0.000.268
49		[192.168.0.1]	[192.168.0.26]	TCP: D=23 S=3043 ACK=15813367 WIN=17	0.200.892
50		[192.168.0.1]	[192.168.0.26]	Telnet: C PORT=3043 p	1.061.153

Examine this capture closely. Expert display is disabled. Which statement is true?

- A. Telnet is a session layer protocol
- B. The user at 192.168.0.1 would complain of slow response
- C. The delta times in frames 32, 45, and 50 would warrant investigation
- D. None of the above

**Answer:** D

[www.Pass4itSure.com](https://www.Pass4itSure.com)



# Trying our product !

- ★ **100%** Guaranteed Success
- ★ **100%** Money Back Guarantee
- ★ **365 Days** Free Update
- ★ **Instant Download** After Purchase
- ★ **24x7** Customer Support
- ★ Average **99.9%** Success Rate
- ★ More than **69,000** Satisfied Customers Worldwide
- ★ Multi-Platform capabilities - **Windows, Mac, Android, iPhone, iPod, iPad, Kindle**

## Need Help

Please provide as much detail as possible so we can best assist you.

To update a previously submitted ticket:



Submit A Ticket

### One Year Free Update



Free update is available within One Year after your purchase. After One Year, you will get 50% discounts for updating. And we are proud to boast a 24/7 efficient Customer Support system via Email.



### Money Back Guarantee

To ensure that you are spending on quality products, we provide 100% money back guarantee for 30 days from the date of purchase.



### Security & Privacy

We respect customer privacy. We use McAfee's security service to provide you with utmost security for your personal information & peace of mind.

## Guarantee & Policy | Privacy & Policy | Terms & Conditions

Any charges made through this site will appear as Global Simulators Limited.

All trademarks are the property of their respective owners.

Copyright © 2004-2014, All Rights Reserved.