



1Y0-301^{Q&As}

Deploying Citrix XenDesktop 7.6 Solutions

Pass Citrix 1Y0-301 Exam with 100% Guarantee

Free Download Real Questions & Answers **PDF** and **VCE** file from:

<https://www.pass4itsure.com/1y0-301.html>

100% Passing Guarantee
100% Money Back Assurance

Following Questions and Answers are all new published by Citrix
Official Exam Center

-  **Instant Download** After Purchase
-  **100% Money Back** Guarantee
-  **365 Days** Free Update
-  **800,000+** Satisfied Customers



**QUESTION 1**

A Citrix Engineer needs to add more Delivery Controllers to a site in which the auto-update feature is disabled.

What would the engineer need to do in order for the Virtual Delivery Agents (VDAs) to communicate with the new Delivery Controllers?

- A. Restart the Citrix Desktop Service.
- B. Restart the new Delivery Controllers.
- C. Run a SQL query and update the site database.
- D. Update the ListOfDDCs registry key for all VDAs.

Correct Answer: D Section: (none)

QUESTION 2

A Citrix Engineer is in the process of setting up a remote access solution using self-signed certificates.

To help ensure a secure remote connection, the engineer must install a Root certificate on the _____ and _____. (Choose the two correct options to complete the sentence.)

- A. endpoint device
- B. StoreFront server
- C. Domain Controllers
- D. Delivery Controllers

Correct Answer: AB Section: (none)

QUESTION 3**CORRECT TEXT**

Scenario: A Citrix Engineer must provide students in the Cardiology program at CCH with Windows 8 virtual desktops. These students will use hosted applications through Receiver. Personalization of the Windows 8 virtual desktops is NOT required.

Tasks:

1.

Create the appropriate machine catalog and name it XD_POOLED 1.

2.

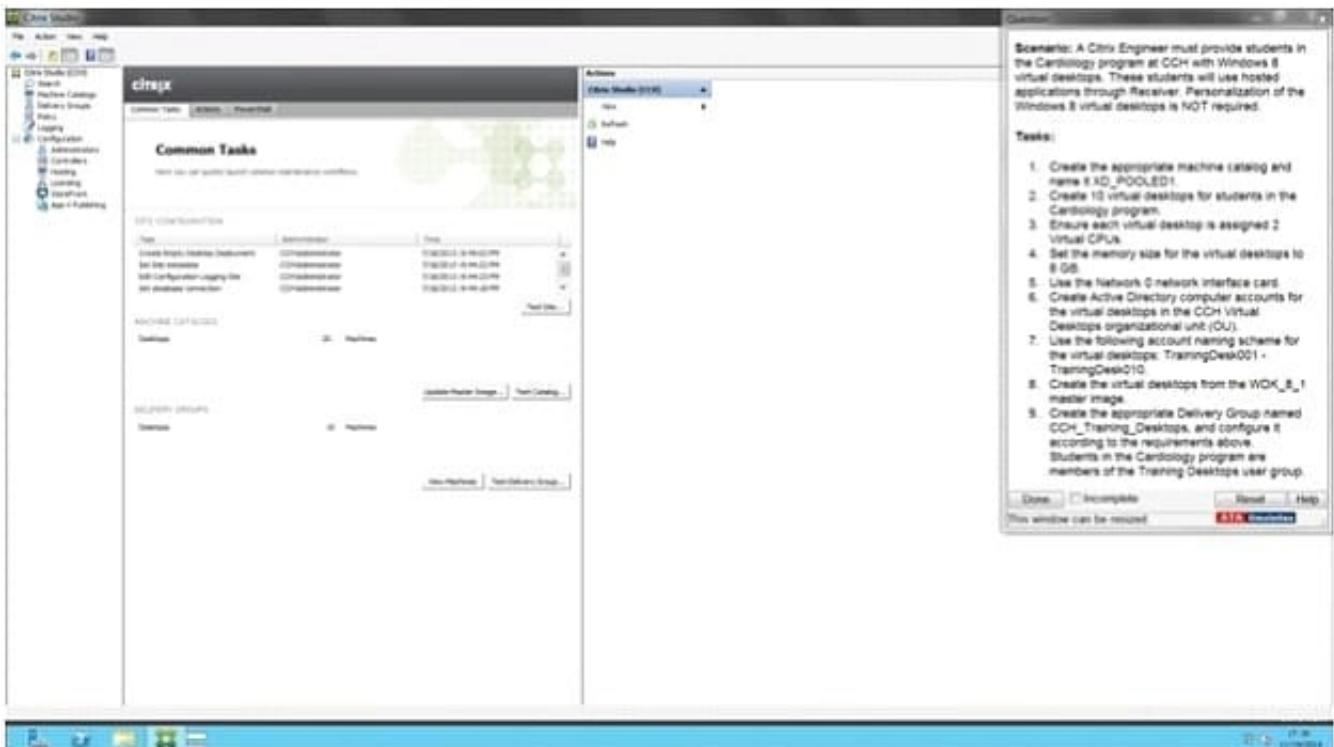
Create 10 virtual desktops for students in the Cardiology program.



3.
Ensure each virtual desktop is assigned 2 Virtual CPUs.
4.
Set the memory size for the virtual desktops to 8 GB.
5.
Use the Network 0 network interface card.
6.
Create Active Directory computer accounts for the virtual desktops in the CCH Virtual Desktops organizational unit (OU).

7.
Use the following account naming scheme for the virtual desktops: TrainingDesk001 ? TrainingDesk010.
8.
Create the virtual desktops from the WDK_8_1 master image.

9.
Create the appropriate Delivery Group named CCH_Training_Desktops, and configure it according to the requirements above. Students in the Cardiology program are members of the Training Desktops user group.



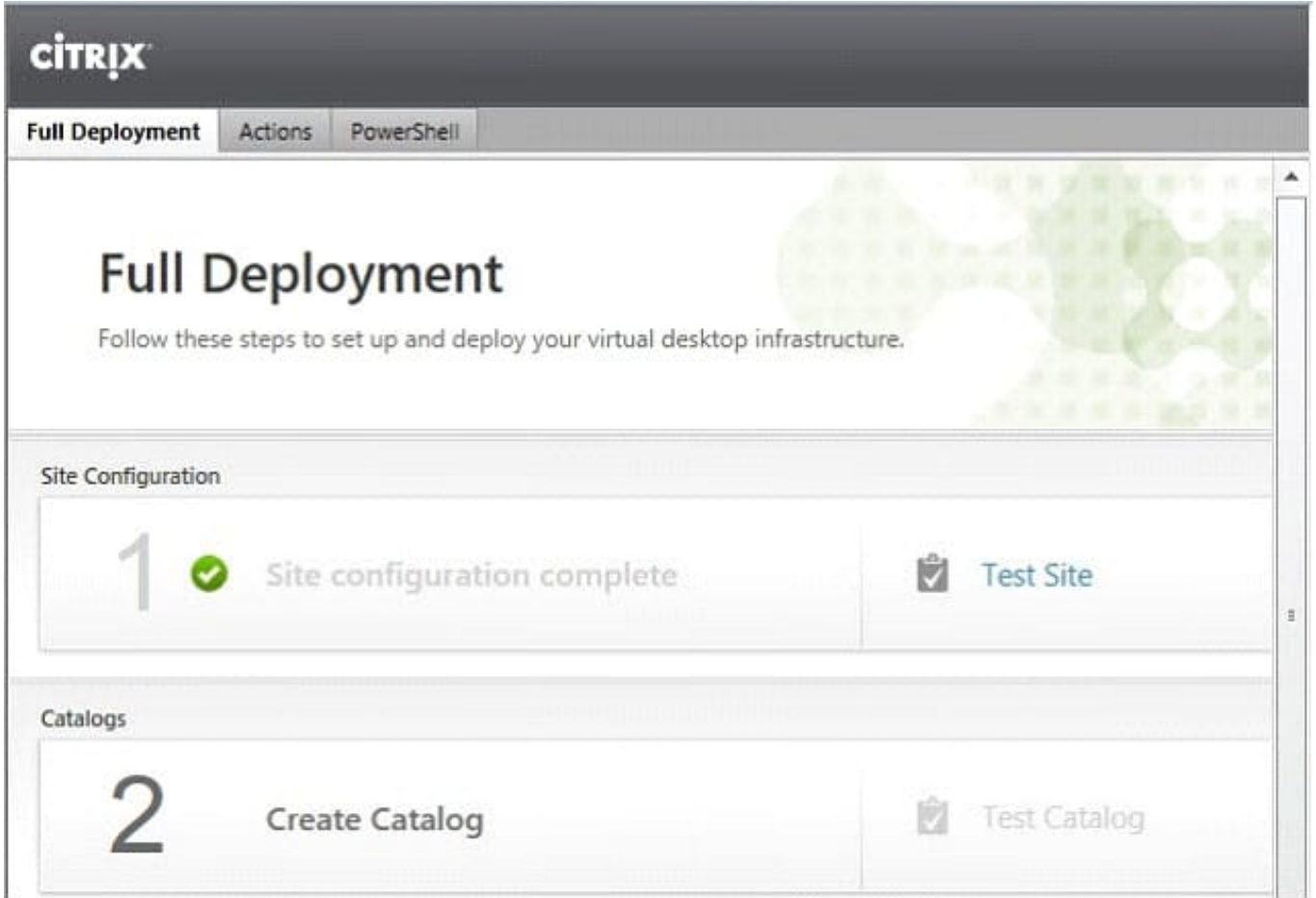
A.



Correct Answer: A Section: (none)

Answer: Find the solution with all steps below. XenDesktop 7 Machine Catalog

1. In Desktop Studio we want to create a VM catalog,



2. Choose the OS type



Operating System and Hardware

We want to help you create the correct type of Machine Catalog by asking a few questions to provide a recommendation

[Learn more](#)

Select an operating system and machine type for this Machine Catalog.

- Windows Desktop OS**
The Desktop OS Machine Catalog provides VDI desktops ideal for a variety of different users.
- Windows Server OS**
The Server OS Machine Catalog provides hosted shared desktops for a large-scale deployment of standardized machines.
- Remote PC Access**
The Remote PC Access Machine Catalog provides users with remote access to their physical office desktops, allowing them to work at any time.

3. We will be using VMs and Citrix Machine Creation Services, so the defaults are fine. 4. Use the default

Machine Management

As part of creating a Machine Catalog, the way you plan to provision machines influences the recommended Machine Catalog type.

[Learn more](#)

This infrastructure will be built using:

- Virtual machines**
- Physical hardware**

Desktop images are managed using:

- Machine Creation Services (MCS)**
- Provisioning Services (PVS)**
- Another service or technology**
I will manage my desktop images with something other than Citrix technology. I have existing Master Images already prepared.



Desktop Experience

Consider the tasks your users perform and then decide which desktop experience would be best.

Which desktop experience do you want users to have?

- I want users to connect to a new (random) desktop each time they log on.
- I want users to connect to the same (static) desktop each time they log on.

Do you want to save any changes that the user makes to the desktop?

- Yes, save changes on a separate Personal vDisk.
- Yes, create a dedicated virtual machine and save changes on the local disk.
- No, discard all changes and clear virtual desktops when the user logs off.
If configured, folder redirection will not be affected.

5.

Choose the master image WDK_8_1 master image

6.

A great feature of XenDesktop is the ability to customize the catalog hardware at provisioning time, so you can offer different tiers of VMs from the exact same master image. No need to build up templates with the same OS and software stack, just to customize the vCPUs and memory specs.

7.

OU ?

C:\Users\Chaudhry\Desktop\1.jpg

8.

On the summary screen you need to give the catalog a name and a description.

9.

After you kick off the provisioning process you get a nice status. MCS first makes a copy of your master VM, then does its magic to create copies



Master Image

Select a Host and corresponding Virtual Machine or snapshot from the list to create a Master Image.

Select a Resource:

VDI

Select a snapshot (or a Virtual Machine):



The Master Image is built using Windows XP or Windows Vista

You should also select this option if the snapshot or Master Image is running Windows 7 with VDA 5.6

Virtual Machines

Number of virtual machines: 2

Configure your machines:

Name:	D001-Win702
Virtual CPUs:	1
Memory (MB):	2048
Hard disk (GB):	26

Annotations:

- Number of virtual machines: Make this 10
- Virtual CPUs: Make this 2
- Memory (MB): Make this 8192 MB to allot 8 GB Memory



CCH Virtual Desktops

Machine Names –

TrainingDesk001 - TrainingDesk010

Active Directory Computer Accounts

Each machine in a Machine Catalog needs a corresponding Active Directory computer account.

[Learn more](#)

Select an Active Directory account option:

- Create new Active Directory accounts
- Use existing Active Directory accounts

Active Directory location for computer accounts:

Domain:

Active Directory tree view showing the following structure:

- Computers
 - Member Servers
 - VDI**
 - Managed Service Accounts

Selected location:

Account naming scheme:

VDI-NS-W7-01

Summary

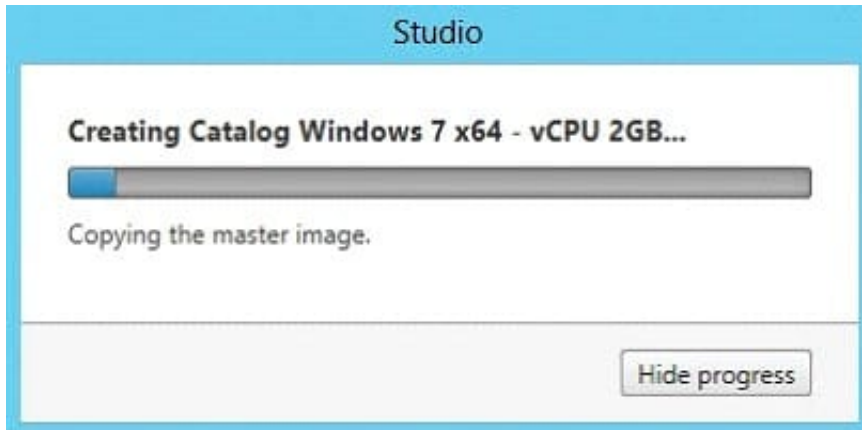
Machine type:	Windows Desktop OS
Machine management:	Virtual
Provisioning method:	Machine creation services (MCS)
Desktop experience:	Users connect to a new desktop each time they log on
Resources:	VDI
Master Image name:	D001-W7-... A steps...
Number of VMs to create:	2
Virtual CPUs:	1

Change this per the Simulation to XD_POOLED1

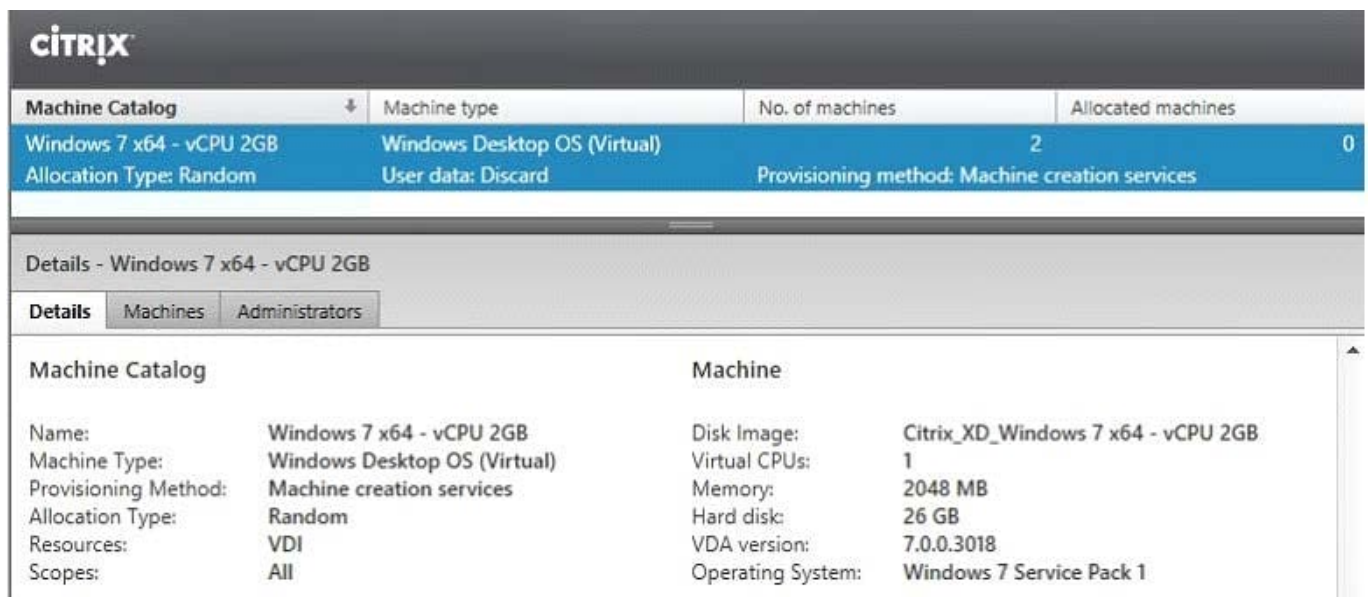
Machine Catalog name:

Machine Catalog description for administrators: (Optional)

Note: To complete the deployment, assign this machine catalog to a Delivery Group by selecting Delivery Groups and then Create or Edit a Delivery Group.



10. When the provisioning is completed you now have one machine catalog entry



11. If you double click on the machine catalog it will bring up a search window with the individual VMs listed. You can now power them on and wait for them to show a "registered" status. If you click on an individual VM it will pull up even more details. If a user had an active session to the VM then you get a plethora more data.



The screenshot shows the Citrix Desktop Studio interface. At the top, there's a search bar with the text '<Unsaved>' and a dropdown menu for 'Saved searches'. Below that, a search results table is displayed for the query '(Machine Catalog Is "Windows 7 x64 - vCPU 2GB")'. The table has columns for Name, Machine Catalog, Delivery Group, User, Maintenance, Persist User, Power State, and Registration. Two rows are visible, both for 'VDI-NS-W7-01.contoso.net' and 'VDI-NS-W7-02.contoso.net'. Below the table, the 'Details' view for 'VDI-NS-W7-01.contoso.net' is shown, with tabs for 'Details' and 'Administrators'. The 'Details' tab is active, showing a list of properties for the Machine and Session.

Name	Machine Catalog	Delivery Gro...	User	Maintenanc...	Persist User...	Power State	Registration...
VDI-NS-W7-01.contoso.net	Windows 7 x6...	-	-	Off	Discard	On	Registered
VDI-NS-W7-02.contoso.net	Windows 7 x6...	-	-	Off	Discard	On	Registered

Machine	Session
Machine: VDI-NS-W7-01.contoso.net	Current User: -
Power State: On	Protocol: -
Registration: Registered	Session type: Desktop
Delivery Group: -	Time in State: -
Machine Catalog: Windows 7 x64 - vCPU 2GB	Client Name: -
Connection: vSphere51	Client Address: -
IP Address: -	Launched Via IP: -
Agent Version: 7.0.0.3018	Connected Via: -
Profile Definition:	
StoreFronts:	

As you can see, creating a machine catalog from a master template is quick and easy. Within Desktop Studio you can view a tremendous amount of detail about the catalog and individual VMs.

QUESTION 4

Scenario: A Citrix Engineer needs to provide virtual desktop access to branch office users by deploying NetScaler to an existing Citrix StoreFront environment. Active Directory, along with RSA tokens, will be used for authentication on the NetScaler.

Which two authentication servers should the engineer configure on the NetScaler? (Choose two.)

- A. Local
- B. LDAP
- C. RADIUS
- D. TACACS

Correct Answer: AD Section: (none)

QUESTION 5

Which step can a Citrix Engineer take to reduce logon times when using Citrix Profile Management?

- A. Use offline files



- B. Use Personal vDisk
- C. Disable profile streaming
- D. Implement folder redirection

Correct Answer: D Section: (none)

QUESTION 6

Scenario: A Citrix Engineer is configuring email-based discovery for the mycompany.com domain. After creating a DNS service record the engineer would like to test that it has been implemented correctly.

Which command should a Citrix Engineer execute to validate a DNS service record after it has been created?

- A. nslookup -type=a _CitrixReceiver._udp.mycompany.com
- B. nslookup -type=svr _CitrixReceiver._tcp.mycompany.com
- C. nslookup -type=mx _CitrixReceiver._udp.mycompany.com
- D. nslookup -type=cname _CitrixReceiver._tcp.mycompany.com

Correct Answer: B Section: (none)

QUESTION 7

A Citrix Engineer must ensure that evaluation licenses are replaced with XenDesktop Enterprise licenses already imported to the Citrix License Server.

Which step must the engineer take to ensure that XenDesktop can be fully licensed?

- A. Restart the License Server.
- B. Update the license policy in Citrix Studio.
- C. Change the product version in Citrix Studio.
- D. Change the product version on the License Server.

Correct Answer: C Section: (none)

QUESTION 8

Scenario: A Citrix Engineer set Desktop Composition Redirection to '\\Enabled\\' in a policy within Citrix Studio and filtered the policy by virtual desktops. Desktop Composition Redirection is set to '\\Disabled\\' in a group policy object (GPO) applied to the organizational unit (OU) containing all virtual desktops.

What will be the resultant effect of these two policies on the virtual desktops they are applied to?

- A. The two policies will cancel each other out, leaving the desktops with the default settings.



- B. The policy assigned to the OU will take precedence and Desktop Composition Redirection will be disabled.
- C. The Unfiltered policy will take precedence over the conflicting policies, leaving the desktops with the default settings.
- D. The policy assigned in Citrix Studio will apply as it takes precedence over OU policies and Desktop Composition Redirection is enabled.

Correct Answer: B Section: (none)

QUESTION 9

Scenario: A Citrix Engineer needs to create a device collection of new vGPU-enabled virtual desktops in Provisioning Services. The collection needs to be made available as part of an existing machine catalog in Citrix Studio.

Which wizard should the engineer run to accomplish this task?

- A. Import Device Wizard
- B. XenDesktop Setup Wizard
- C. Create Machine Catalog Wizard
- D. Provisioning Services Configuration Wizard

Correct Answer: B Section: (none)

QUESTION 10

Which two settings could a Citrix Engineer configure on NetScaler Gateway to ensure that connections are utilizing ICA Proxy? (Choose two.)

- A. SSL Bridge
- B. Basic Mode
- C. SSL Offload
- D. Content Switching
- E. SmartAccess Mode

Correct Answer: BE Section: (none)

QUESTION 11

CORRECT TEXT

Scenario: A Citrix Engineer must provide users at CCH headquarters with Windows 8 virtual desktops.

These users will access hosted applications through Receiver. Personalization of the Windows 8 virtual

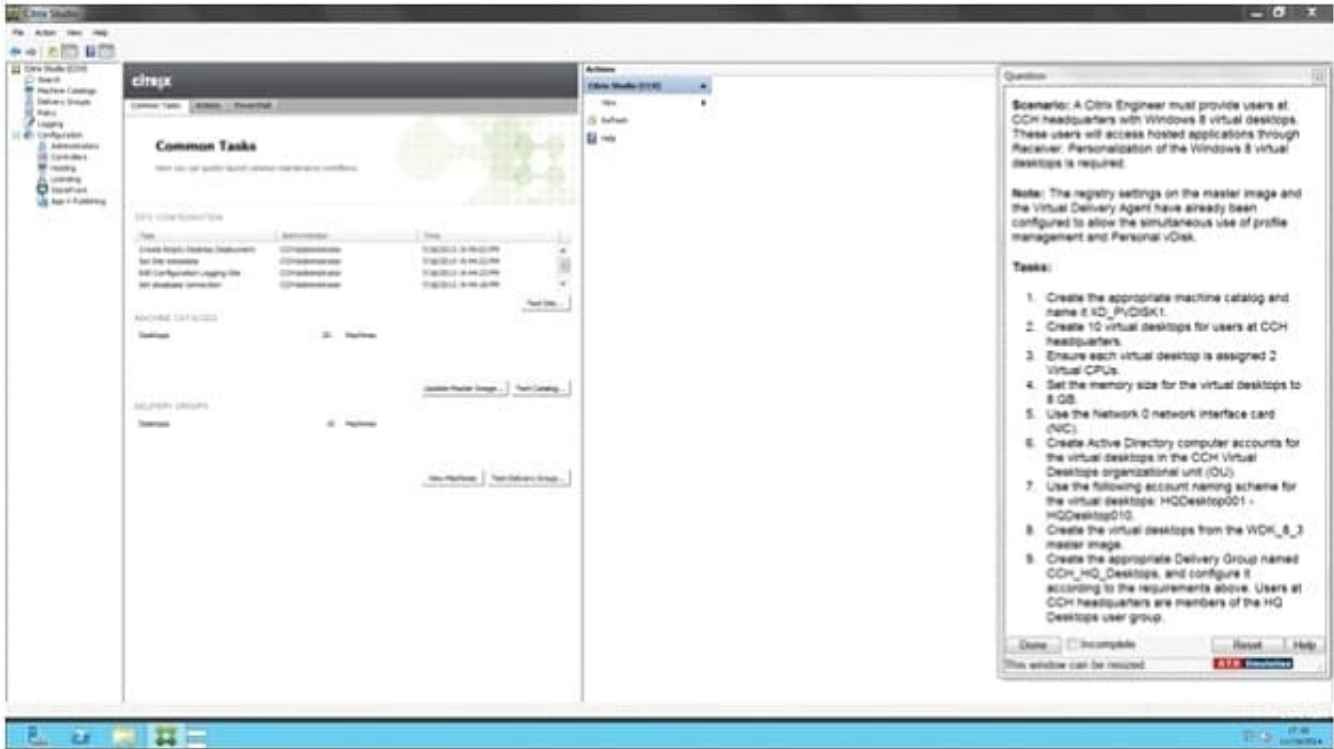


desktops is required.

Note: The registry settings on the master image and the Virtual Delivery Agent have already been configured to allow the simultaneous use of profile management and Personal vDisk.

Tasks:

1.
Create the appropriate machine catalog and name it XD_PVDISK1.
2.
Create 10 virtual desktops for users at CCH headquarters.
3.
Ensure each virtual desktop is assigned 2 Virtual CPUs.
4.
Set the memory size for the virtual desktops to 8 GB.
5.
Use the Network 0 network interface card (NIC).
6.
Create Active Directory computer accounts for the virtual desktops in the CCH Virtual Desktops organizational unit(OU).
7.
Use the following account naming scheme for the virtual desktops: HQDesktop001 ?HQDesktop010.
8.
Create the virtual desktops from the WDK_8_3 master image.
9.
Create the appropriate Delivery Group named CCH_HQ_Desktops, and configure it according to the requirements above. Users at CCH headquarters are members of the HQ Desktops user group.



A.

Correct Answer: A Section: (none)

Answer: Find the solution with all steps below. XenDesktop 7 Machine Catalog

1. In Desktop Studio we want to create a VM catalog,



The screenshot shows the Citrix Full Deployment wizard. At the top, there are tabs for 'Full Deployment', 'Actions', and 'PowerShell'. The main heading is 'Full Deployment' with the instruction: 'Follow these steps to set up and deploy your virtual desktop infrastructure.' Below this, there are two main sections: 'Site Configuration' and 'Catalogs'. In the 'Site Configuration' section, step 1 is 'Site configuration complete' with a green checkmark, and there is a 'Test Site' button. In the 'Catalogs' section, step 2 is 'Create Catalog', and there is a 'Test Catalog' button.

2. Choose the OS type

Operating System and Hardware

We want to help you create the correct type of Machine Catalog by asking a few questions to provide a recommendation

[Learn more](#)

Select an operating system and machine type for this Machine Catalog.

- Windows Desktop OS**
The Desktop OS Machine Catalog provides VDI desktops ideal for a variety of different users.
- Windows Server OS**
The Server OS Machine Catalog provides hosted shared desktops for a large-scale deployment of standardized machines.
- Remote PC Access**
The Remote PC Access Machine Catalog provides users with remote access to their physical office desktops, allowing them to work at any time.

3. We will be using VMs and Citrix Machine Creation Services, so the defaults are fine. 4. Use the default



Machine Management

As part of creating a Machine Catalog, the way you plan to provision machines influences the recommended Machine Catalog type.

[Learn more](#)

This infrastructure will be built using:

- Virtual machines
- Physical hardware

Desktop images are managed using:

- Machine Creation Services (MCS)
- Provisioning Services (PVS)
- Another service or technology
I will manage my desktop images with something other than Citrix technology. I have existing Master Images already prepared.

Desktop Experience

Consider the tasks your users perform and then decide which desktop experience would be best.

Which desktop experience do you want users to have?

- I want users to connect to a new (random) desktop each time they log on.
- I want users to connect to the same (static) desktop each time they log on.

Do you want to save any changes that the user makes to the desktop?

- Yes, save changes on a separate Personal vDisk.
- Yes, create a dedicated virtual machine and save changes on the local disk.
- No, discard all changes and clear virtual desktops when the user logs off.
If configured, folder redirection will not be affected.

5.

Choose the master image

6.

A great feature of XenDesktop is the ability to customize the catalog hardware at provisioning time, so you can offer different tiers of VMs from the exact same master image. No need to build up templates with the same OS and software stack, just to customize the vCPUs and memory specs.

7.

OU ?

C:\Users\Chaudhry\Desktop\1.jpg



8.

On the summary screen you need to give the catalog a name and a description.

9.

After you kick off the provisioning process you get a nice status. MCS first makes a copy of your master VM, then does its magic to create copies

10.

When the provisioning is completed you now have one machine catalog entry

11.

If you double click on the machine catalog it will bring up a search window with the individual VMs listed. You can now power them on and wait for them to show a "registered" status. If you click on an individual VM it will pull up even more details. If a user had an active session to the VM then you get a plethora more data.

WDK_8_3 master image.

Master Image

Select a Host and corresponding Virtual Machine or snapshot from the list to create a Master Image.

Select a Resource:

VDI

Select a snapshot (or a Virtual Machine):



The Master Image is built using Windows XP or Windows Vista

You should also select this option if the snapshot or Master Image is running Windows 7 with VDA 5.6



Virtual Machines

Number of virtual machines: - +

Configure your machines:

Name:	D001-Win702	
Virtual CPUs:	1	<input type="text" value="1"/> - +
Memory (MB):	2048	<input type="text" value="2048"/> - +
Hard disk (GB):	26	<input type="text" value="26"/>

Annotations:

- Make this 10 (points to Number of virtual machines)
- Make this 2 (points to Virtual CPUs)
- Make this 8192 MB to allot 8 GB Memory (points to Memory)

CCH Virtual Desktops

Machine Names –

HQDesktop001 - HQDesktop010

Active Directory Computer Accounts

Each machine in a Machine Catalog needs a corresponding Active Directory computer account.

Learn more

Select an Active Directory account option:

- Create new Active Directory accounts
- Use existing Active Directory accounts

Active Directory location for computer accounts:

Domain:

Selected location:

Account naming scheme:

VDI-NS-W7-01



Summary

Machine type:	Windows Desktop OS
Machine management:	Virtual
Provisioning method:	Machine creation services (MCS)
Desktop experience:	Users connect to a new desktop each time they log on
Resources:	VDI
Master Image name:	D001-Win702 <small>A snapshot of the Master Image VM will be created</small>
Number of VMs to create:	2
Virtual CPUs:	1

Machine Catalog name:
Windows 7 x64 - 1 vCPU 2GB

Machine Catalog description for administrators: (Optional)
General purpose Windows 7 x64 VMs

Note: To complete the deployment, assign this machine catalog to a Delivery Group by selecting Delivery Groups and then Create or Edit a Delivery Group.

Change this per the Simulation to XD_PVDISK1

Studio

Creating Catalog Windows 7 x64 - vCPU 2GB...

Copying the master image.



CITRIX

Machine Catalog	Machine type	No. of machines	Allocated machines
Windows 7 x64 - vCPU 2GB Allocation Type: Random	Windows Desktop OS (Virtual) User data: Discard	2	0

Provisioning method: Machine creation services

Details - Windows 7 x64 - vCPU 2GB

Details Machines Administrators

Machine Catalog	Machine
Name: Windows 7 x64 - vCPU 2GB Machine Type: Windows Desktop OS (Virtual) Provisioning Method: Machine creation services Allocation Type: Random Resources: VDI Scopes: All	Disk Image: Citrix_XD_Windows 7 x64 - vCPU 2GB Virtual CPUs: 1 Memory: 2048 MB Hard disk: 26 GB VDA version: 7.0.0.3018 Operating System: Windows 7 Service Pack 1

CITRIX <Unsaved> Saved searches

Search results for '(Machine Catalog Is "Windows 7 x64 - vCPU 2GB")'

Desktop OS Machines (2)		Server OS Machines (0)		Sessions (0)			
Name	Machine Catalog	Delivery Gro...	User	Maintenanc...	Persist User...	Power State	Registration...
VDI-NS-W7-01.contoso.net	Windows 7 x6...	-	-	Off	Discard	On	Registered
VDI-NS-W7-02.contoso.net	Windows 7 x6...	-	-	Off	Discard	On	Registered

Details - VDI-NS-W7-01.contoso.net

Details Administrators

Machine	Session
Machine: VDI-NS-W7-01.contoso.net Power State: On Registration: Registered Delivery Group: - Machine Catalog: Windows 7 x64 - vCPU 2GB Connection: vSphere51 IP Address: - Agent Version: 7.0.0.3018 Profile Definition: StoreFronts:	Current User: - Protocol: - Session type: Desktop Time in State: - Client Name: - Client Address: - Launched Via IP: - Connected Via: -

As you can see, creating a machine catalog from a master template is quick and easy. Within Desktop Studio you can view a tremendous amount of detail about the catalog and individual VMs.

QUESTION 12

CORRECT TEXT

Scenario: Provisioning Services has been installed to facilitate the deployment of Windows 8 desktops and web servers. A Citrix Engineer is instructed to provision web servers using the Web_Server vDisk. The engineer needs to create a



target device and add the device to Active Directory.

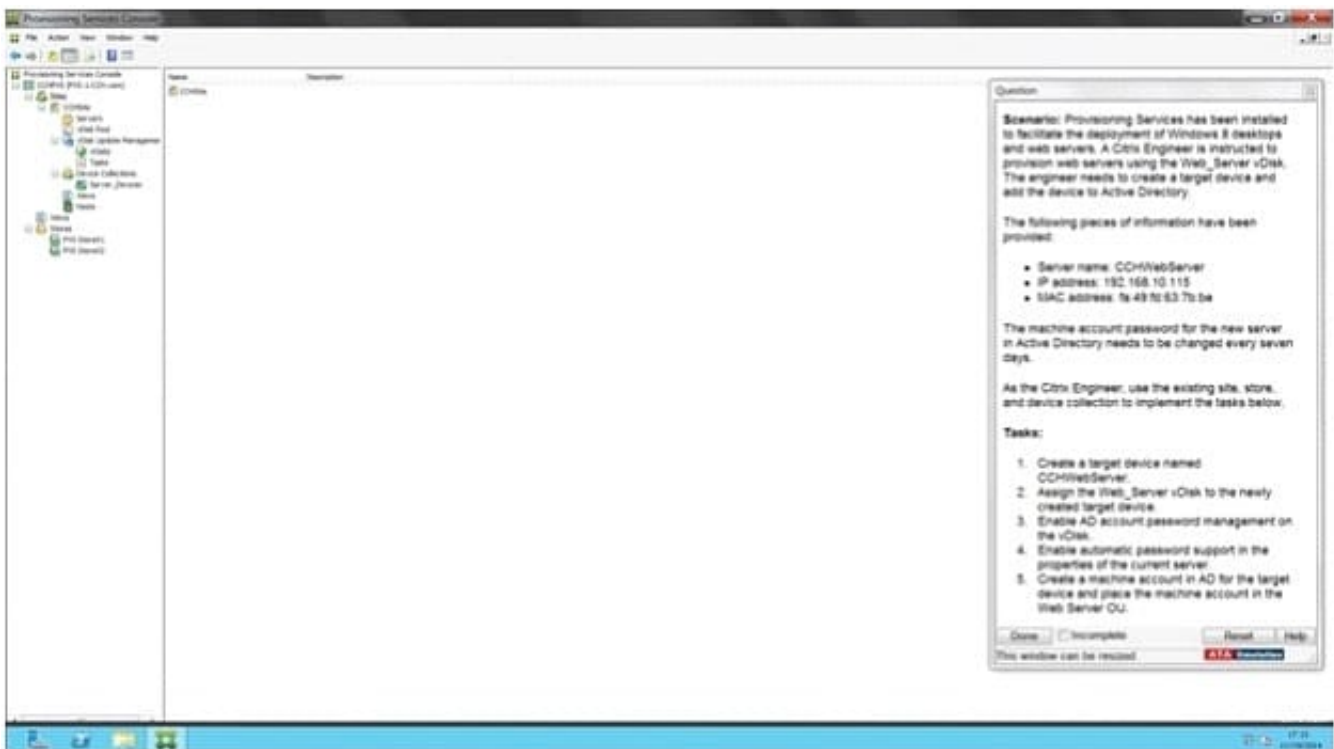
The following pieces of information have been provided:

Server name: CCHWebServer IP address: 192.168.10.115 MAC address: fa:49:fd:63:7b:be

The machine account password for the new server in Active Directory needs to be changed every seven days. As the Citrix Engineer, use the existing site, store, and device collection to implement the tasks below.

Tasks:

1.
Create a target device named CCHWebServer.
2.
Assign the Web_Server vDisk to the newly created target device.
3.
Enable AD account password management on the vDisk.
4.
Enable automatic password support in the properties of the current server.
5.
Create a machine account in AD for the target device and place the machine account in the Web Server OU.



A.



Correct Answer: A Section: (none)

Answer: Find the solution with all steps below.

The wizard is run directly from a Provisioning Services Console. Right-click on the Site icon in the Console tree panel, then select the Streamed VM Setup Wizard... menu option. The Welcome to the Streamed VM Setup Wizard appears.



Click Next to begin the setup.

Select the type of hypervisor (Xenserver per the Simulation) to connect to, then enter the required connection credentials.

The hypervisor information for the environment is:

- XenServer IP Address: 192.168.10.5
- Username: root
- Password: Password1

Click Next to verify the connection. Note: For convenient reuse, the most recently used hypervisor and username will be cached in the registry of the local machine running this instance of the Console. Note: XenServer 5.5 Update 2 hypervisors are not supported in the 5.6.1 Streamed VM Setup Wizard. System Center Virtual Machine Management (SCVMM) servers require PowerShell 2.0 to be installed. Optional. On the Hypervisor cluster screen, select the hypervisor host or cluster to host the VMs, then click Next. Select one VM template from the specified host, then click Next. On the Collection and vDisk page, select the collection in which to add VMs. Select a single shared vDisk within to assign to VMs within that collection, then click Next. Web_Server vDisk
uk.co.certification.simulator.questionpool.PList@1669be70

Set the number of VMs to create, the number of vCPUs, and the amount of Memory each new virtual machine will use. 1 VM per the Simulation- CCHWebServer Enable the radio button next to one of the following methods used for adding Active Directory computer accounts, then click Next: Note: An Active Directory administrator will need to delegate rights to the Provisioning Services Console user to allow Active Directory account creation. Note: The domain and OU default to those of the current user. Note: New computer names to be created are first validated that they do not already exist as computers in Active Directory, VMs, or target devices. If the Create new accounts method is selected: Use ?Web Server OU uk.co.certification.simulator.questionpool.PList@16970c10 Review all configuration settings, and then click Next to confirm and finish configurations. Note: Clicking Cancel cancels the configuration of any additional machines, and the quantity of successfully configured machines displays under the Progress bar. If the wizard fails or is cancelled in the middle of an operation, any progress made is retained. If cleanup of existing progress is required, it must be done manually, which includes removing the following: uk.co.certification.simulator.questionpool.PList@16970da0

**QUESTION 13**

In a healthcare environment users log on to and log off from sessions which have applications published from XenApp several times throughout the day.

Which feature could a Citrix Engineer use to improve the experience for users when they reconnect to applications?

- A. Auto-launch
- B. Session lingering
- C. Connection leasing
- D. Session pre-launch

Correct Answer: B Section: (none)

QUESTION 14

How should a Citrix Engineer configure a hosted application so that only a subset of users within an existing Delivery Group are able to access the hosted application?

- A. Configure the '\\Prefer\\' keyword.
- B. Configure Limit Visibility to the target users.
- C. Create an HDX policy based on the user group.
- D. Publish the application to only the subset of users.

Correct Answer: B Section: (none)

QUESTION 15

A Citrix Engineer needs to restrict access to an application so it can only be accessed from external connections.

Where should the engineer go to configure this restriction?

- A. StoreFront: External Access
- B. Delivery Group: Access policy
- C. Citrix Studio: Citrix Security policy
- D. NetScaler Gateway: Session policy

Correct Answer: B Section: (none)