



1Y0-201^{Q&As}

Managing Citrix XenDesktop 7.6 Solutions exam

Pass Citrix 1Y0-201 Exam with 100% Guarantee

Free Download Real Questions & Answers **PDF** and **VCE** file from:

<https://www.pass4itsure.com/1y0-201.html>

100% Passing Guarantee
100% Money Back Assurance

Following Questions and Answers are all new published by Citrix
Official Exam Center

-  **Instant Download** After Purchase
-  **100% Money Back** Guarantee
-  **365 Days** Free Update
-  **800,000+** Satisfied Customers



**QUESTION 1**

Scenario: An application is NOT functioning as expected. The application was installed on a vDisk that has been placed in Standard mode. The vDisk is assigned to Desktop OS machines. Those Desktop OS machines have a 5 GB cache disk associated with them and the vDisk is configured to \\cache to RAM with overflow to disk\\. A Citrix Administrator attempted to view the Windows event logs from the previous week, but the logs only go back to the most recent restart. What should the administrator do to ensure that all logs are retained?

- A. Enable WINRM on the image.
- B. Change the location of the write cache.
- C. Use the write-eventlog PowerShell cmdlet.
- D. Change the path of the event logs to that of the write cache disk.

Correct Answer: D

QUESTION 2

A Citrix Administrator is in the process of upgrading the edition of XenDesktop to Enterprise. After uploading the new license file to the License Server, what must the administrator do to continue the upgrade?

- A. Run lmadmin.exe
- B. Restart the Delivery Controller
- C. Refresh the License Server Administration Console
- D. Change the edition of the license used within Citrix Studio

Correct Answer: D

QUESTION 3

Scenario: A Citrix Administrator configures a profile management policy in Citrix Studio for the members of a particular organizational unit (OU). The administrator must verify that the filter is applied correctly to the newly created policy. How could the administrator verify that the filter is correctly applied?

- A. Using the Modeling Wizard
- B. Using a Policy Template Comparison
- C. Running rsop.msc on the Delivery Controller
- D. Running gpresult /v from the command line

Correct Answer: A

**QUESTION 4**

Scenario: A Citrix Administrator needs to set up an alert on a service that is important for Desktop OS machine performance. The infrastructure includes 3000 Desktop OS machines and two Provisioning Services servers. Which service on the Provisioning Services server should the administrator monitor?

- A. TFTP
- B. BootP
- C. Stream
- D. Two-Stage Boot

Correct Answer: C

QUESTION 5

Scenario: A Desktop OS machine is unresponsive. The user connected to the machine was in the process of creating a very large presentation using Microsoft PowerPoint. The presentation had NOT been saved prior to the machine becoming unresponsive.

What should a Citrix Administrator do to resolve this issue while preventing data loss?

- A. Migrate the Desktop OS machine to a different host.
- B. Restart the Desktop OS machine from Citrix Studio.
- C. Move the target device to another Provisioning Services server.
- D. Use Citrix Director to locate and terminate any rogue processes.

Correct Answer: C

QUESTION 6

A Citrix Administrator is given the task of creating a new maintenance version for a vDisk from an existing maintenance disk. Which task does the administrator need to complete before the new maintenance version of the vDisk is created?

- A. Merge the vDisk.
- B. Promote the version.
- C. Release vDisk locks.
- D. Unassign the vDisk from selected devices.

Correct Answer: A

QUESTION 7



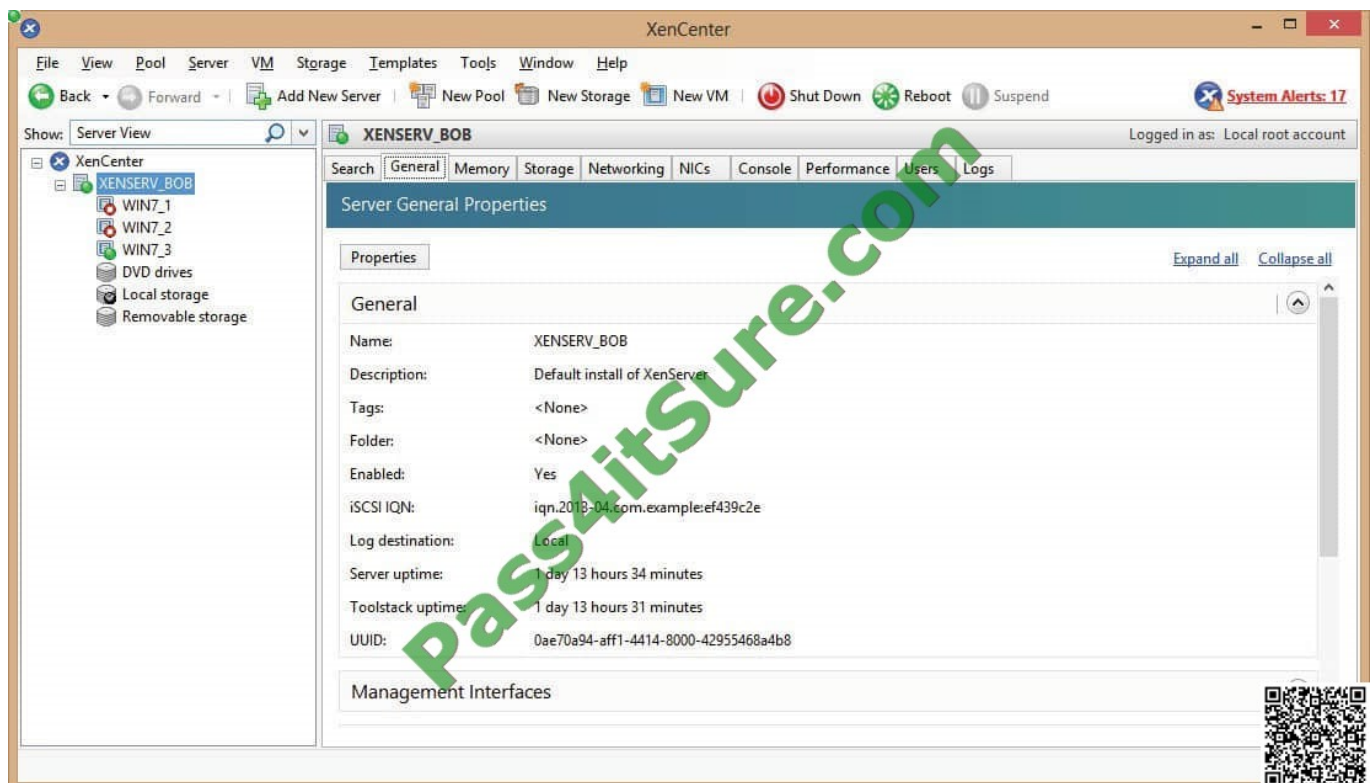
Scenario: Users complain that they are NOT able to print to the new special barcode printers attached to their client devices. However, they can print to other mapped printers. What should a Citrix Administrator do to resolve this issue?

- A. Configure the Printer Assignments policy setting.
- B. Set the Client printer redirection policy to Allowed.
- C. Configure Default Print Flags on the Desktop OS machines.
- D. Pre-stage manufacturer-provided printer drivers on the Desktop OS machines using pnputil.exe.

Correct Answer: D

QUESTION 8

A Citrix Administrator discovers that several virtual desktops in Citrix Studio are unregistered. Click the Exhibit button to view a screenshot of the XenCenter Console.



Based on the information in the screenshot, why are the virtual desktops unregistered?

- A. XenServer is NOT a pool member.
- B. XenServer is in maintenance mode.
- C. The virtual machines are NOT running.
- D. The virtual machines have been suspended.

Correct Answer: C

**QUESTION 9**

After installing Firefox and Adobe Reader on the master target device and updating the vDisk, users report the new applications are NOT visible. What should a Citrix Administrator do to resolve this issue?

- A. Set the vDisk mode to '\\Production.\\'
- B. Merge existing vDisks with the base version.
- C. Revert the vDisk target to the previous version.
- D. Select '\\Update Machines\\' on the Machine Catalog.

Correct Answer: A

QUESTION 10

Scenario: A Citrix Administrator is in the process of creating a new session machine catalog. On the '\\Machine Management\\' page, '\\Machine Creation Services (MCS)\\' is grayed out. What should the administrator do to enable this option for selection?

- A. Restart the Delivery Controller.
- B. Add a new resource connection.
- C. Use the New-BrokerCatalog PowerShell cmdlet.
- D. Install the '\\Machine Creation Service Extension\\' on each Delivery Controller.

Correct Answer: B

QUESTION 11

Which component CANNOT be co-located with Delivery Controller on the same server?

- A. SQL Server
- B. License Server
- C. StoreFront Server
- D. Domain Controller

Correct Answer: D

QUESTION 12

Scenario: Session Prelaunch is configured for all users in an environment. A new user complains about slow logon. A Citrix Administrator finds that Session Prelaunch is NOT working as expected for the new user and is working as



expected

for all other users.

What is the likely cause of this issue?

- A. The user is NOT using the HTML5 Receiver.
- B. The NetScaler Gateway plug-in is NOT installed.
- C. The Citrix Receiver is installed without the /includeSSON switch.
- D. The user certificate is NOT installed on the endpoint client device.

Correct Answer: C

QUESTION 13

Scenario: A high number of Desktop OS machines are displaying as '\\Unregistered\\' in Citrix Studio. However, Desktop OS machines that are registered are functioning as expected. What is the likely cause of this issue?

- A. The Delivery Controller is unable to register with DNS.
- B. The Delivery Controller is NOT configured to trust XML requests.
- C. A Digital certificate is NOT installed on the Desktop OS machines.
- D. The affected Desktop OS machines are unable to register with DNS.

Correct Answer: D

QUESTION 14

In which node within Citrix Studio could a Citrix Administrator modify the operating system type for Machine Creation Services?

- A. Hosting
- B. Policies
- C. Controllers
- D. Machine Catalogs

Correct Answer: D

QUESTION 15

Scenario: Newly hired employees report they are NOT able to connect to their Desktop OS machines. Some of the



employees have provided screenshots that show an error message indicating that no license is available. The license console shows that all device/user licenses have been allocated. Three weeks ago the company sold a subsidiary, freeing up 100 licenses, so the IT team is certain that licenses are available. Which command-line interface utility should a Citrix Administrator use to address this issue?

- A. lmdiag.exe
- B. lmdown.exe
- C. udadmin.exe
- D. lmadmin.exe

Correct Answer: C

QUESTION 16

Scenario: While updating the XenServer tools of the vDisk on the master target device, a Citrix Administrator receives the following error:

STOP:0x0000007B

How should the administrator update the master target device and vDisk created from that device?

- A. Perform a Reverse image.
- B. Restart the Stream service.
- C. Downgrade the XenServer tools.
- D. Change the write cache location to cache on server.

Correct Answer: A

QUESTION 17

SIMULATION

Scenario: A Citrix Administrator has prepared two server OS machines to host applications. The administrator used Machine Creation Services to provision the server OS machines. The server OS machines are part of the Windows 2012

Servers machine catalog. The Server 2012 Hosted Desktops and Applications delivery group is assigned to the Windows 2012 Servers machine catalog.

The administrator was instructed to roll out Firefox as a hosted application and has installed Firefox on the master server OS machine named Win2012-Master. Now, the administrator needs to update the server OS machines so that Firefox is

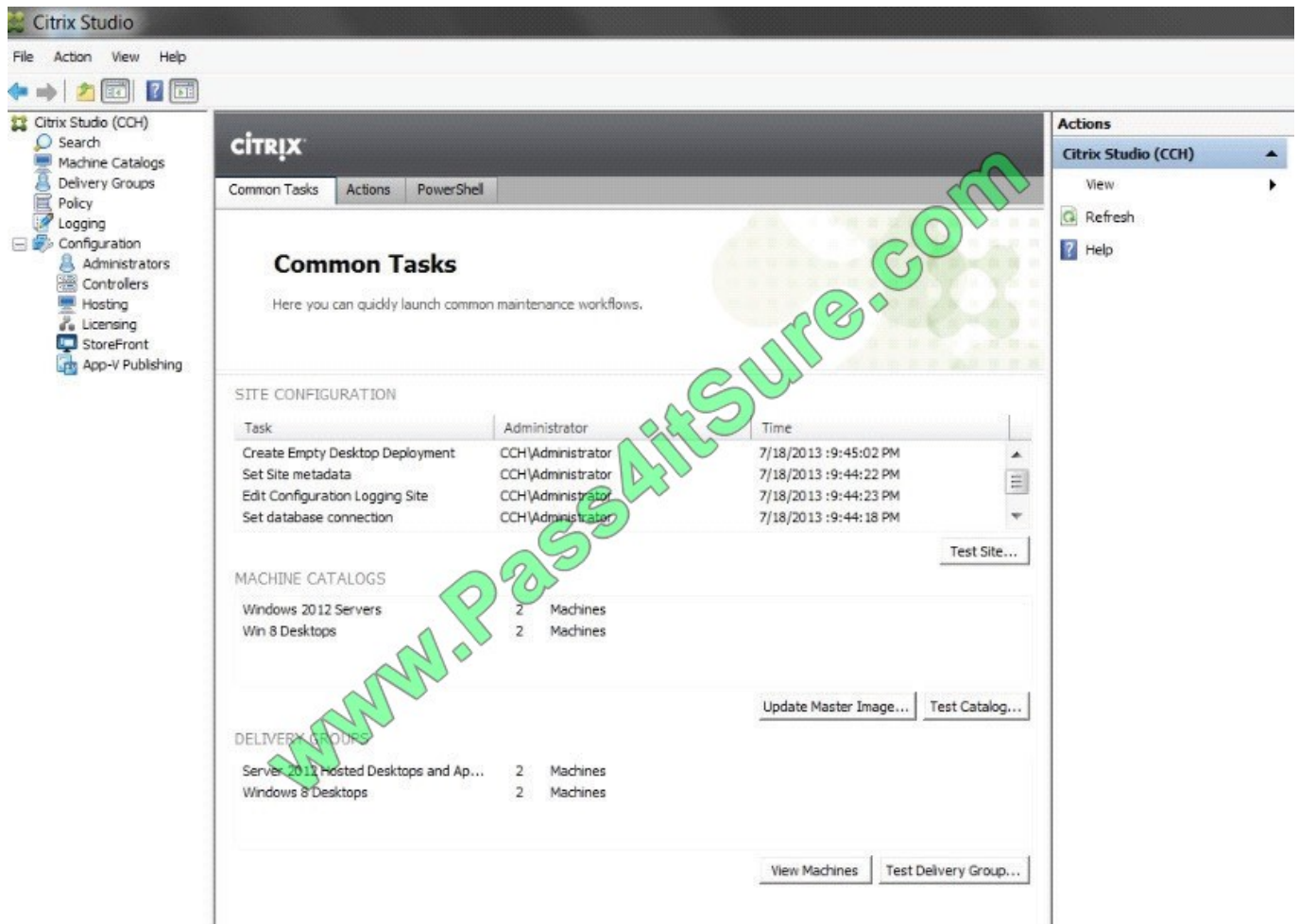
available as a hosted application to only the Finance user group through StoreFront or Citrix Receiver upon the next reboot of the server OS machines. The Finance user group is a member of the Server 2012 Hosted Desktops and

Applications delivery group.



Tasks:

Update the Windows 2012 Servers machine catalog to meet the requirements outlined in the scenario.



Correct Answer:

Update Machine Catalog

1) In Citrix Studio, highlight the "Citrix Studio" node at the top-left of the tree, under "Common Tasks" under the "Machine Catalog" section, highlight the Windows Server 2012 Machine Catalog and click on the Update master image button.

This will launch the "Update machine" wizard. (Note-the virtual machine should be powered off before updating to remove any locks.)

2) In the "Update Machine" wizard click on Next.

3) From the "Master Image" dialog window, select the Win2012-Master from the list of snapshots and virtual machines then click on Next.

4) From the "Rollout Strategy" dialog window, verify that the "On the next shut down (not right now)" option is selected and then click on Next.

5) From the "Summary" dialog window click on Finish. Update Delivery Group



- 1) In Citrix Studio, highlight "Delivery Groups" node at the top-left of the tree, select the Delivery Groups tab, highlight the Server 2012 Hosted Desktops and Applications delivery group, under the right-side "Actions" pane click on Add Applications.
 - 2) From the "Getting Started with Applications" dialog window click on Next.
 - 3) From the "Applications" dialog window click on select Firefox from the list of "Selected Applications" or click on Add applications Manually and type in the path of the application then click on Next.
 - 4) From the "Summary" dialog window click on Finish.
 - 5) In Citrix Studio, highlight "Delivery Groups" node at the top-left of the tree, select the Delivery Groups tab, highlight the Server 2012 Hosted Desktops and Applications delivery group, under the right-side "Actions" pane click on View Applications. This will display the published applications available under the "Applications" tab.
 - 6) Highlight Firefox under the "Applications" tab and then click on Properties under the right-side "Actions" pane.
 - 7) From the "Application Settings" dialog window select Limit Visibility.
 - 8) From the "Limit Visibility" dialog window select "Limit visibility for this application to the users listed below", click on Add Users, and the Finance group then click on Ok.
-

QUESTION 18

Scenario: Users of the Human Resource (HR) user group report that one of their applications is NOT being personalized. A Citrix Administrator discovers that the application writes user-specific data in %programfiles%\HR\%username%. Which policy could the administrator configure to enable personalization of this application?

- A. Folders to mirror
- B. Path to user store
- C. Directories to synchronize
- D. Path to cross platform settings store

Correct Answer: C

QUESTION 19

A Citrix Administrator deployed a new version of Citrix Receiver to users. Which two tools could the administrator use to determine if connected users are using the new version? (Choose two.)

- A. Citrix Studio
- B. Citrix Director
- C. Desktop Log files
- D. StoreFrontConsole



Correct Answer: AC

QUESTION 20

Members of a new Desktop group are unable to launch Desktop OS machines assigned to them. What should a Citrix Administrator do to troubleshoot this issue?

- A. Recreate the master image that was used to provision the Desktop OS machines.
- B. Update Citrix Receivers on all user devices to connect with the Desktop OS machines.
- C. Enable the Virtual Delivery Agents logs on the Desktop OS machines to find out the underlying issues.
- D. Configure StoreFront servers to connect with the Data Collectors to enumerate applications/Desktop OS machines.

Correct Answer: C

QUESTION 21

SIMULATION

Scenario: CCH acquired Xirti , and a Citrix Administrator has created a domain trust between the two organizations. Xirtic has an existing XenDesktop deployment, which consists of a site named Xirtic and one Delivery Controller named

XRT01. A Citrix Administrator is tasked with integrating Xirtic\\'s XenDesktop deployment into CCH\\'s XenDesktop deployment. Within CCH\\'s environment, communication to and from XRT01 must go over HTTP and must use port 80.

At the moment, both Xirtic and CCH users log into their respective environments by entering their domains and usernames, for example: domain\username. The administrator has been instructed to ensure users can log in using their

usernames only or without the need to authenticate when using Citrix Receiver when possible.

Note the following:

If a new store is created, the display name of the Delivery Controller in the new store should be "Xirtic".

If a new Delivery Controller is added to the existing store, the display name of the new Delivery Controller should be "Xirtic".

If the Delivery Controller setting in the existing store is modified to merge the CCH and Xirti Delivery Controllers, the display name of the Delivery Controller should be "Xirtic".

All systems in the CCH environment are members of the CCH domain. All systems in the Xirtic environment are members of the Xirtic domain.

Use hostnames only when configuring settings in this simulated environment; do not assume the FQDN. Tasks:

1. Configure StoreFront to integrate Xirtic\\'s environment into the CCH environment.
2. Configure user access to meet the requirements outlined in the scenario.



Correct Answer:

Citrix StoreFront Configuration

- 1) When the wizard starts enter a store name.
- 2) Now we need to add the delivery controllers (Controller1) that StoreFront will interface with



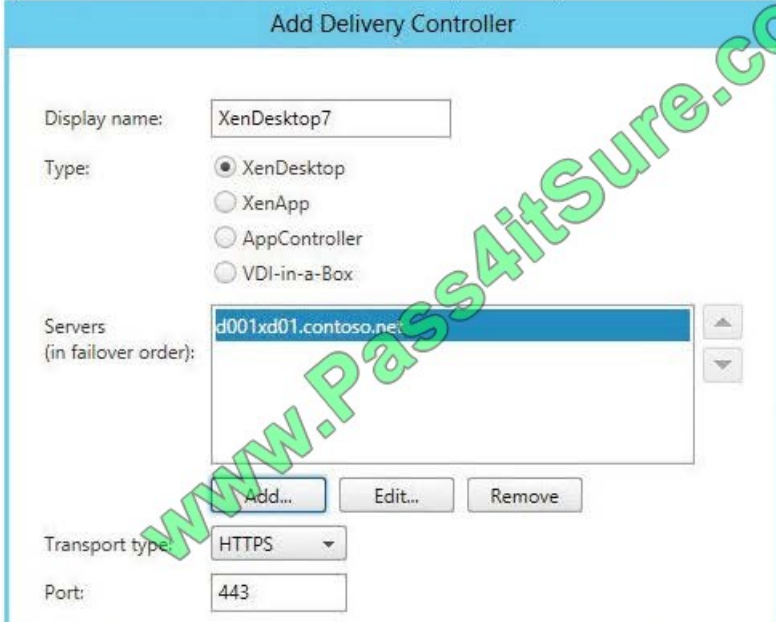
1) When the wizard starts enter a store name.

Store Name

Choose a name that helps users identify the store. The store name appears in Citrix Receiver as part of the user's account.

Store name:

2) Now we need to add the delivery controllers (Controller1) that StoreFront will interface with



Remote Access

Add NetScaler Gateway appliances to provide user access from external networks.

Remote access: None
 No VPN tunnel **i**
 Full VPN tunnel **i**

NetScaler Gateway appliances:

Add...

Default appliance:



3) Once the store is created it will give you the web browser URL that you can use to access it. Also take note that to access StoreFront from a web browser you must append "Web" to the store URL, as the URL shows below. Don't try going to /Citrix/Store as that won't work.

"Store" Created Successfully

Store available

Use email addresses for account discovery. [Learn more](#)

Website created

Try out the store at <http://d001xd01.contoso.net/Citrix/StoreWeb>.

Citrix Receiver updates

Choose how Citrix Receiver can install updates. [Edit Settings](#)

Add '\\Xirtic\' to Trusted Domain

Locate the Authentication node, then in the right pane click on Configure Trusted Domains.



QUESTION 22

Scenario: Users report slow application launch times after a master image update. These users have critical deadlines and need access to their machines as soon as possible. How should a Citrix Administrator resolve the slow application launch times?

A. Revert to the previous image.



- B. Reset user profiles using Citrix Director.
- C. Restart the impacted Desktop OS machines.
- D. Migrate the Desktop OS machines to a different host.

Correct Answer: D

QUESTION 23

Scenario: A user needs two Desktop OS machines from the same group open at once. When the user attempts to launch a second Desktop OS machine, the first Desktop OS machine closes and another is launched. What could a Citrix Administrator edit to resolve this issue?

- A. Properties of the Delivery Group
- B. Web.config file on the StoreFront server
- C. Properties of the Desktop OS machine catalog
- D. Virtual Delivery Agent settings on the Desktop OS machines

Correct Answer: D

QUESTION 24

Scenario: A Citrix Administrator must provide a new application to 50 users and wants to use the most cost-effective application delivery method. These users perform well-defined tasks and do NOT require personalization or offline access to

applications.

What type of application delivery method should the administrator consider?

- A. Persistent virtual desktops
- B. Hosted Server OS machine
- C. Virtual machine hosted apps
- D. Locally streamed virtual hard disk

Correct Answer: B

QUESTION 25

Scenario: An organization has headquarters based in London and has branch offices in New York and Beijing. Citrix XenDesktop was recently implemented in the environment. All Desktop OS machines are located within the London

Datacenter while print servers are located in each branch office. Users have been complaining that printing from the branch offices is slow. All branches are connected through a Wide Area Network (WAN). QoS has been implemented



for all

ICA/HDX traffic.

How could a Citrix Administrator optimize the printing performance for branch office users without asking for additional investments from management?

- A. Disable client auto-created printers.
- B. Disable direct connections to the print server.
- C. Increase the WAN link speed to the branch offices.
- D. Adjust printing bandwidth as part of the overall user session bandwidth limit.

Correct Answer: B

QUESTION 26

SIMULATION

Scenario: A Citrix Administrator has updated the Finance vDisk to include Microsoft Office 2013. The administrator has tested the Finance vDisk and now needs to merge all updates to the vDisk to maximize and reclaim disk space.

Members

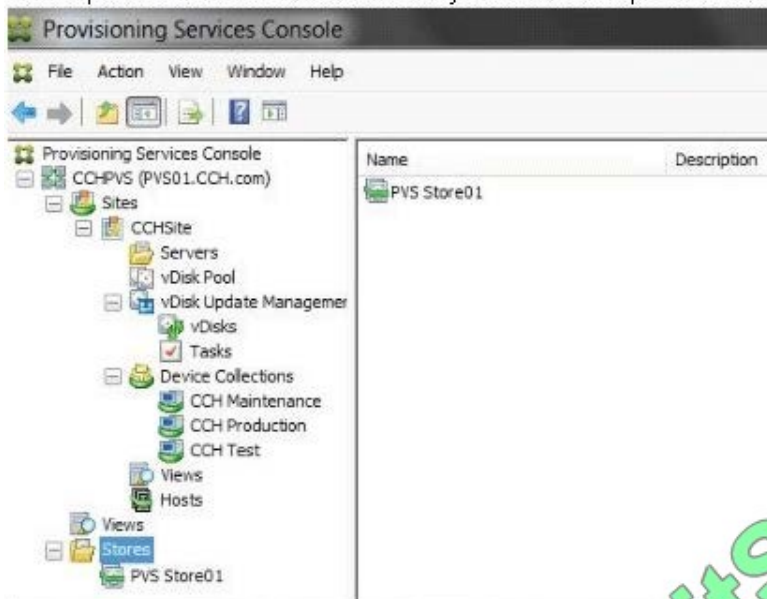
of the Finance user group are expected to have access to Microsoft Office 2013 when they log on to desktops to which the Finance vDisk is assigned.

Tasks:

1.
Merge all updates to the vDisk.
2.
Ensure members of the Finance user group have access to Microsoft Office 2013 as stated in the scenario.
3. Complete the tasks that are necessary to meet the requirements outlined in the scenario.



3. Complete the tasks that are necessary to meet the requirements outlined in the scenario.



Correct Answer:

- 1) In Provisioning Services Console, click on vDisk Pool in the left pane then right click on the vDisk template and select Versions.
- 2) From the "vDisk Version" dialog window click on Merge.
- 3) From the "Merge" popup window select "Merge Base - Last base + all updates from that base" and "Set merge version access to:" "Production" then click on OK.
- 4) From the "vDisk Version" dialog window click on Done.
- 5) From the "vDisk Version dialog window click on Promote.

**QUESTION 27**

Scenario: A Citrix Administrator is attempting to troubleshoot a Machine Creation Services related issue and has configured logging for Machine Creation Services. In an effort to resolve the issue, the administrator restarted the Delivery

Controller. Now the administrator CANNOT find any data in the Machine Creation Services logs.

Why is there NO data in the Machine Creation Services log?

- A. Configuration Logging is disabled.
- B. Information in the Machine Creation Services log is copied to the log archive on restart.
- C. Machine Creation Services logging gets disabled when the Delivery Controller is restarted.
- D. The Machine Creation Services log was overwritten when the service associated with Machine Creation Services was restarted.

Correct Answer: D

QUESTION 28

Scenario: A Citrix Administrator discovers that there has been a security breach that requires all users to change their password. However, users are NOT able to change their password through StoreFront. What should the administrator do to allow for password changes?

- A. Allow users to change passwords at any time.
- B. Allow users to change expired passwords only.
- C. Enable the password expired warning notification period.
- D. Enable the password change feature on the NetScaler Gateway.

Correct Answer: A

QUESTION 29

Scenario: A Citrix Administrator installed AutoCAD 2014 on a vDisk image and asked users to test the application. Users are reporting that the application is NOT available on their Desktop OS machines. The administrator started a test

machine and verified that the application is there.

What should the administrator do to allow the users to see the application?

- A. Promote the vDisk.
- B. Restart the target devices.



- C. Change the vDisk access mode to Private.
- D. Change the target device type to Production.

Correct Answer: B

QUESTION 30

Scenario: A Citrix Administrator uses Machine Creation Services to provision Desktop OS machines in an environment. The administrator needs to update an application that is locally installed on the Desktop OS machines. Which action should the administrator take after updating the application to ensure that users are provided with the updated application?

- A. Update the master image, then update the Delivery Group.
- B. Update the session machine catalog, then update the Delivery Group.
- C. Update the master image, then update the appropriate session machine catalog.
- D. Update the Desktop OS machines, then update the appropriate session machine catalog.

Correct Answer: C

[1Y0-201 VCE Dumps](#)

[1Y0-201 Practice Test](#)

[1Y0-201 Study Guide](#)



To Read the [Whole Q&As](#), please purchase the [Complete Version](#) from [Our website](#).

Try our product !

100% Guaranteed Success

100% Money Back Guarantee

365 Days Free Update

Instant Download After Purchase

24x7 Customer Support

Average 99.9% Success Rate

More than 800,000 Satisfied Customers Worldwide

Multi-Platform capabilities - [Windows](#), [Mac](#), [Android](#), [iPhone](#), [iPod](#), [iPad](#), [Kindle](#)

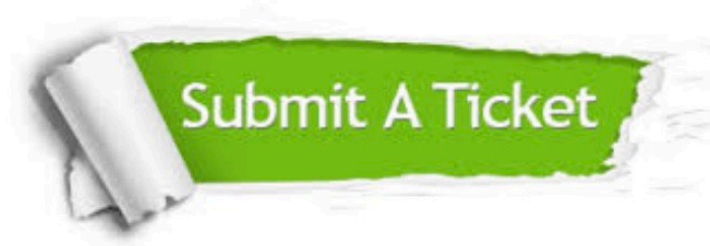
We provide exam PDF and VCE of Cisco, Microsoft, IBM, CompTIA, Oracle and other IT Certifications. You can view Vendor list of All Certification Exams offered:

<https://www.pass4itsure.com/allproducts>

Need Help

Please provide as much detail as possible so we can best assist you.

To update a previously submitted ticket:



 <p>One Year Free Update Free update is available within One Year after your purchase. After One Year, you will get 50% discounts for updating. And we are proud to boast a 24/7 efficient Customer Support system via Email.</p>	 <p>Money Back Guarantee To ensure that you are spending on quality products, we provide 100% money back guarantee for 30 days from the date of purchase.</p>	 <p>Security & Privacy We respect customer privacy. We use McAfee's security service to provide you with utmost security for your personal information & peace of mind.</p>
---	---	--

Any charges made through this site will appear as Global Simulators Limited.

All trademarks are the property of their respective owners.

Copyright © pass4itsure, All Rights Reserved.