



# 156-915.77<sup>Q&As</sup>

Check Point Certified Security Expert Update

## Pass CheckPoint 156-915.77 Exam with 100% Guarantee

Free Download Real Questions & Answers **PDF** and **VCE** file from:

<https://www.pass4itsure.com/156-915-77.html>

100% Passing Guarantee  
100% Money Back Assurance

Following Questions and Answers are all new published by CheckPoint Official Exam Center

-  **Instant Download** After Purchase
-  **100% Money Back** Guarantee
-  **365 Days** Free Update
-  **800,000+** Satisfied Customers



**QUESTION 1**

What are you required to do before running the command `upgrade_export`?

- A. Run a `cpstop` on the Security Gateway.
- B. Run a `cpstop` on the Security Management Server.
- C. Close all GUI clients.
- D. Run `cpconfig` and set yourself up as a GUI client.

Correct Answer: C

---

**QUESTION 2**

A ClusterXL configuration is limited to \_\_\_\_ members.

- A. There is no limit.
- B. 16
- C. 6
- D. 2

Correct Answer: C

---

**QUESTION 3**

Your main internal network 10.10.10.0/24 allows all traffic to the Internet using Hide NAT. You also have a small network 10.10.20.0/24 behind the internal router. You want to configure the kernel to translate the source address only when network 10.10.20.0 tries to access the Internet for HTTP, SMTP, and FTP services. Which of the following configurations will allow this network to access the Internet?

- A. Configure three Manual Static NAT rules for network 10.10.20.0/24, one for each service.
- B. Configure Automatic Static NAT on network 10.10.20.0/24.
- C. Configure one Manual Hide NAT rule for HTTP, FTP, and SMTP services for network 10.10.20.0/24.
- D. Configure Automatic Hide NAT on network 10.10.20.0/24 and then edit the Service column in the NAT Rule Base on the automatic rule.

Correct Answer: C

---

**QUESTION 4**

What is the purpose of the pre-defined exclusions included with SmartEvent R77?



- A. To allow SmartEvent R77 to function properly with all other R71 devices.
- B. To avoid incorrect event generation by the default IPS event definition; a scenario that may occur in deployments that include Security Gateways of versions prior to R71.
- C. As a base for starting and building exclusions.
- D. To give samples of how to write your own exclusion.

Correct Answer: B

---

#### QUESTION 5

What command syntax would you use to see accounts the gateway suspects are service accounts?

- A. pdp check\_log
- B. pdp show service
- C. adlog check\_accounts
- D. adlog a service\_accounts

Correct Answer: D

---

#### QUESTION 6

Write the full fw command and syntax that you would use to troubleshoot ClusterXL sync issues.

- A. fw tab -s -t connections

Correct Answer: A

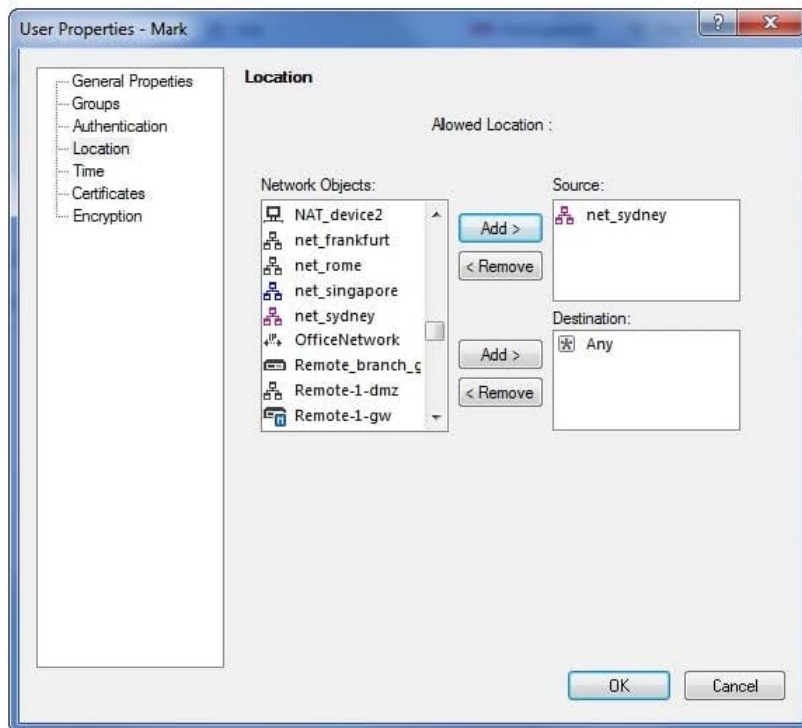
---

#### QUESTION 7

Charles requests a Website while using a computer not in the net\_singapore network.



| No. | Hits | Name            | Source                      | Destination               | VPN            | Service      | Action    | Track | Install On     |
|-----|------|-----------------|-----------------------------|---------------------------|----------------|--------------|-----------|-------|----------------|
| 1   | 0    | NetBIOS         | Any                         | Any                       | Any Traffic    | NBT          | drop      | None  | Policy Targets |
| 2   | 0    | Management      | webSingapore                | fwsingapore               | Any Traffic    | ssh<br>https | accept    | Log   | Policy Targets |
| 3   | 0    | Stealth         | Any                         | fwsingapore               | Any Traffic    | Any          | drop      | Log   | Policy Targets |
| 4   | 0    | Authentication  | All Users@net_singapore     | Any                       | Any Traffic    | http         | User Auth | Log   | Policy Targets |
| 5   | 0    | Partner City    | net_singapore<br>net_rome   | net_rome<br>net_singapore | rome_singapore | Any          | accept    | Log   | Policy Targets |
| 6   | 0    | Network Traffic | net_singapore<br>net_sydney | Any                       | Any Traffic    | ftp          | accept    | Log   | Policy Targets |
| 7   | 0    | Cleanup         | Any                         | Any                       | Any Traffic    | Any          | drop      | Log   | Policy Targets |



What is TRUE about his location restriction?

- A. Source setting in Source column always takes precedence.
- B. Source setting in User Properties always takes precedence.
- C. As location restrictions add up, he would be allowed from net\_singapore and net\_sydney.
- D. It depends on how the User Auth object is configured; whether User Properties or Source Restriction takes precedence.

Correct Answer: D

### QUESTION 8

Match the following commands to their correct function.



| Command                          | Function   |
|----------------------------------|--|
| C1 <code>cp_admin_convert</code> | F1: export and import different revisions of the database.   |
| C2 <code>cpcsa_client</code>     | F2: export and import policy packages.   |
| C3 <code>cp_merge</code>         | F3: transfer Log data to an external database.   |
| C4 <code>cpwd_admin</code>       | F4: execute operations on the ICA.   |
|                                  | F5: invokes and monitors critical processes such as Check Point daemons on the local machine.                    |
|                                  | F6: automatically export administrator definitions that were created in <code>cpconfig</code> to SmartDashboard. |

Each command has one function only listed.

- A. C1>F6; C2>F4; C3>F2; C4>F5
- B. C1>F2; C2>F1; C3>F6; C4>F4
- C. C1>F2; C2>F4; C3>F1; C4>F5
- D. C1>F4; C2>F6; C3>F3; C4>F2

Correct Answer: A

#### QUESTION 9

Jon is explaining how the inspection module works to a colleague. If a new connection passes through the inspection module and the packet matches the rule, what is the next step in the process?

- A. Verify if the packet should be moved through the TCP/IP stack.
- B. Verify if any logging or alerts are defined.
- C. Verify if the packet should be rejected.
- D. Verify if another rule exists.

Correct Answer: B

#### QUESTION 10

Type the full `cphaprob` command and syntax that will show full synchronization status.

- A. `cphaprob -i list`

Correct Answer: A

**QUESTION 11**

After filtering a fw monitor trace by port and IP, a packet is displayed three times; in the i, I, and o inspection points, but not in the O inspection point. Which is the likely source of the issue?

- A. The packet has been sent out through a VPN tunnel unencrypted.
- B. An IPSO ACL has blocked the packet's outbound passage.
- C. A SmartDefense module has blocked the packet.
- D. It is due to NAT.

Correct Answer: D

---

**QUESTION 12**

Where does the security administrator activate Identity Awareness within SmartDashboard?

- A. Gateway Object > General Properties
- B. Security Management Server > Identity Awareness
- C. Policy > Global Properties > Identity Awareness
- D. LDAP Server Object > General Properties

Correct Answer: A

---

**QUESTION 13**

In SmartDashboard, Translate destination on client side is checked in Global Properties. When Network Address Translation is used:

- A. It is not necessary to add a static route to the Gateway's routing table.
- B. It is necessary to add a static route to the Gateway's routing table.
- C. The Security Gateway's ARP file must be modified.
- D. VLAN tagging cannot be defined for any hosts protected by the Gateway.

Correct Answer: A

---

**QUESTION 14**

What is the officially accepted diagnostic tool for IP Appliance Support?

- A. ipsoinfo
- B. CST



C. uag-diag

D. cpinfo

Correct Answer: B

---

#### QUESTION 15

The process \_\_\_\_\_ is responsible for all other security server processes run on the Gateway.

A. FWD

B. CPLMD

C. FWM

D. CPD

Correct Answer: A

[156-915.77 Practice Test](#)

[156-915.77 Study Guide](#)

[156-915.77 Exam Questions](#)