

100% Money Back Guarantee

Vendor: Check Point

Exam Code: 156-915.76

Exam Name: Check Point Certified Security Expert
Update Blade

Version: Demo

QUESTION 1

Which CLI tool helps on verifying proper ClusterXL sync?

- A. cphaprob stat
- B. fw stat
- C. fw ctl sync
- D. fw ctl pstat

Correct Answer: D

Explanation

Explanation/Reference:

QUESTION 2

The connection to the first ClusterXL member breaks. The first ClusterXL member leaves the cluster. Afterwards the switch admin set on port to second ClusterXL member to down. What will happen?

- A. Second ClusterXL member still stays active as last member.
- B. Both ClusterXL members share load equally.
- C. Second ClusterXL member also left the cluster.
- D. First ClusterXL member is asked to come back to cluster.

Correct Answer: A

Explanation

Explanation/Reference:

QUESTION 3

Which command will only show the number of entries in the connection table?

- A. fw tab
- B. fw tab -t connections -s
- C. fw tab -t connections -u
- D. fw tab -t connections

Correct Answer: B

Explanation

Explanation/Reference:

QUESTION 4

Which statements about Management HA are correct?

- 1) Primary SmartCenter describes first installed SmartCenter
- 2) Active SmartCenter is always used to administrate with SmartConsole
- 3) Active SmartCenter describes first installed SmartCenter
- 4) Primary SmartCenter is always used to administrate with SmartConsole

- A. 1 and 2
- B. 3 and 4
- C. 2 and 3
- D. 1 and 4

Correct Answer: A

Explanation

Explanation/Reference:

QUESTION 5

Which process should you debug if SmartDashboard login fails?

- A. cpd
- B. fwm
- C. sdm
- D. fwd

Correct Answer: B

Explanation

Explanation/Reference:

QUESTION 6

Paul has just joined the MegaCorp security administration team. Natalie, the administrator, creates a new administrator account for Paul in SmartDashboard and installs the policy. When Paul tries to login it fails. How can Natalie verify whether Paul's IP address is predefined on the security management server?

- A. Access the WEBUI on the Security Gateway, and verify whether Paul's IP address is listed as a GUI client.
- B. Login to Smart Dashboard, access Properties of the SMS, and verify whether Paul's IP address is listed.
- C. Login in to Smart Dashboard, access Global Properties, and select Security Management, to verify whether Paul's IP address is listed.
- D. Type cpconfig on the Management Server and select the option "GUI client List" to see if Paul's IP address is listed.

Correct Answer: D

Explanation

Explanation/Reference:

QUESTION 7

MultiCorp has bought company OmniCorp and now has two active AD domains. How would you deploy Identity Awareness in this environment?

- A. Identity Awareness can only manage one AD domain.
- B. Only Captive Portal can be used.
- C. Only one ADquery is necessary to ask for all domains.
- D. You must run an ADquery for every domain.

Correct Answer: D

Explanation

Explanation/Reference:

QUESTION 8

Which of the following is the preferred method for adding static routes in Gaia?

- A. In the CLI via sysconfig
- B. In Web Portal, under Network Management > IPv4 Static Routes
- C. In the CLI with the command "route add"

D. In SmartDashboard under Gateway Properties > Topology

Correct Answer: B

Explanation

Explanation/Reference:

QUESTION 9

Which command will erase all CRL's?

- A. vpn crl_zap
- B. vpn flush
- C. cpstop/cpstart
- D. vpn crladmin

Correct Answer: A

Explanation

Explanation/Reference:

QUESTION 10

Which component functions as the Internal Certificate Authority for R76?

- A. Security Gateway
- B. Management Server
- C. Policy Server
- D. SmartLSM

Correct Answer: C

Explanation

Explanation/Reference:

QUESTION 11

Control connections between the Security Management Server and the Gateway are not encrypted by the VPN Community. How are these connections secured?

- A. They are encrypted and authenticated using SIC.
- B. They are not encrypted, but are authenticated by the Gateway
- C. They are secured by PPTP
- D. They are not secured.

Correct Answer: A

Explanation

Explanation/Reference:

QUESTION 12

If Bob wanted to create a Management High Availability configuration, what is the minimum number of Security Management servers required in order to achieve his goal?

- A. Three
- B. Two
- C. Four
- D. One

Correct Answer: B
Explanation

Explanation/Reference:

QUESTION 13

David wants to manage hundreds of gateways using a central management tool. What tool would David use to accomplish his goal?

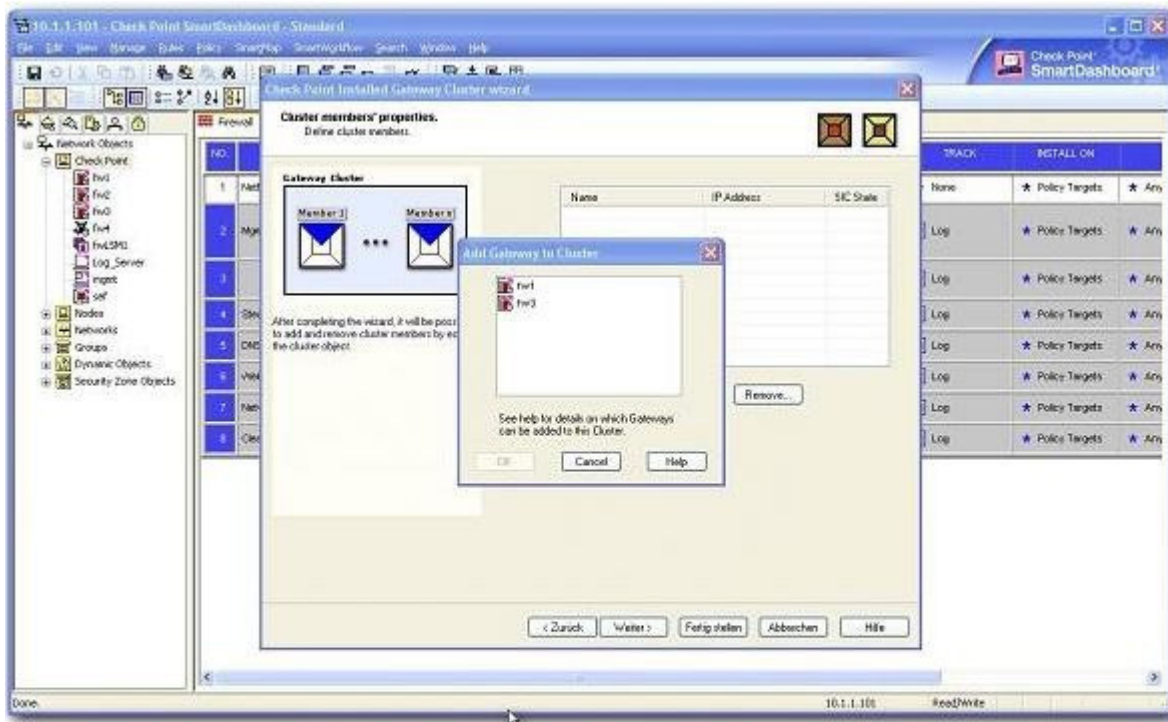
- A. SmartProvisioning
- B. SmartBlade
- C. SmartDashboard
- D. SmartLSM

Correct Answer: A
Explanation

Explanation/Reference:

QUESTION 14

From the following output of cphaprob state, which ClusterXL mode is this?



- (i) fw2 is a member in a VPN community.
- (ii) ClusterXL software blade is not enabled on fw2.
- (iii) fw2 is a DAIP Gateway.

Exhibit:

Mode	Configuration
A. Legacy mode High Availability	1. Every member of the cluster receives all packets sent to the cluster IP address, with the load distributed among all cluster members.
B. New mode High Availability	2. All machines may be active, based on a peak load algorithm. A failure of the active machine causes a failover to a cluster member bearing a lesser load.
C. Load Sharing Multicast mode	3. Provides a clustering mechanism through the use of cloned interface configuration details.
D. Load Sharing Unicast mode	4. One machine in the cluster receives all traffic from a router, and redistributes the packets to other machines in the cluster, implementing both Load Sharing and redundancy.
	5. Only one machine is active at any one time. A failure of the active machine causes a failover to the next highest priority machine in the cluster.

Exhibit:

- A. New mode
- B. Multicast mode
- C. Legacy mode
- D. Unicast mode

Correct Answer: D

Explanation

Explanation/Reference:

QUESTION 15

Which of the following is NOT a feature of ClusterXL?

- A. Enhanced throughput in all ClusterXL modes (2 gateway cluster compared with 1 gateway)
- B. Transparent failover in case of device failures
- C. Zero downtime for mission-critical environments with State Synchronization
- D. Transparent upgrades

Correct Answer: C

Explanation

Explanation/Reference:

QUESTION 16

In which case is a Sticky Decision Function relevant?

- A. Load Sharing - Unicast
- B. Load Balancing - Forward
- C. High Availability
- D. Load Sharing - Multicast

Correct Answer: D

Explanation

Explanation/Reference:

QUESTION 17

You configure a Check Point QoS Rule Base with two rules: an HTTP rule with a weight of 40, and the Default Rule with a weight of 10. If the only traffic passing through your QoS Module is HTTP traffic, what percent of bandwidth will be allocated to the HTTP traffic?

- A. 80%
- B. 40%
- C. 100%
- D. 50%

Correct Answer: C

Explanation

Explanation/Reference:

QUESTION 18

You have pushed a policy to your firewall and you are not able to access the firewall. What command will allow you to remove the current policy from the machine?

- A. fw purge policy
- B. fw fetch policy
- C. fw purge active
- D. fw unloadlocal

Correct Answer: D

Explanation

Explanation/Reference:

QUESTION 19

How do you verify the Check Point kernel running on a firewall?

- A. fw ctl get kernel
- B. fw ctl pstat
- C. fw kernel
- D. fw ver -k

Correct Answer: D

Explanation

Explanation/Reference:

QUESTION 20

Match the following commands to their correct function. Each command has one function only listed.

Command	Function
C1 <code>cp_admin_convert</code>	F1: export and import different revisions of the database.
C2 <code>cpca_client</code>	F2: export and import policy packages.
C3 <code>cp_merge</code>	F3: transfer Log data to an external database.
C4 <code>cpwd_admin</code>	F4: execute operations on the ICA.
	F5: invokes and monitors critical processes such as Check Point daemons on the local machine.
	F6: automatically export administrator definitions that were created in <code>cpconfig</code> to SmartDashboard.

- A. C1>F2; C2>F1; C3>F6; C4>F4
- B. C1>F4; C2>F6; C3>F3; C4>F2
- C. C1>F2; C2>F4; C3>F1; C4>F5
- D. C1>F6; C2>F4; C3>F2; C4>F5

Correct Answer: D

Explanation

Explanation/Reference:

QUESTION 21

Which command displays the installed Security Gateway version?

- A. `fw ver`
- B. `fw stat`
- C. `fw printver`
- D. `cpstat -gw`

Correct Answer: A

Explanation

Explanation/Reference:

QUESTION 22

Which command line interface utility allows the administrator to verify the Security Policy name and timestamp currently installed on a firewall module?

- A. `fw stat`
- B. `fw ctl pstat`
- C. `fw ver`
- D. `cpstat fwd`

Correct Answer: A

Explanation

Explanation/Reference:

QUESTION 23

Suppose the Security Gateway hard drive fails and you are forced to rebuild it. You have a snapshot file stored to a TFTP server and backups of your Security Management Server. What is the correct procedure

for rebuilding the Gateway quickly?

- A. Run the command revert to restore the snapshot. Reinstall any necessary Check Point products. Establish SIC and install the Policy.
- B. Reinstall the base operating system (i.e., SecurePlatform). Configure the Gateway interface so that the Gateway can communicate with the TFTP server. Revert to the stored snapshot image, and install the Security Policy.
- C. Run the command revert to restore the snapshot, establish SIC, and install the Policy.
- D. Reinstall the base operating system (i.e., SecurePlatform). Configure the Gateway interface so that the Gateway can communicate with the TFTP server. Reinstall any necessary Check Point products and previously applied hotfixes. Revert to the stored snapshot image, and install the Policy.

Correct Answer: D

Explanation

Explanation/Reference:

QUESTION 24

Which of the following statements accurately describes the command upgrade_export?

- A. Used primarily when upgrading the Security Management Server, upgrade_export stores all object databases and the /conf directories for importing to a newer Security Gateway version.
- B. upgrade_export stores network-configuration data, objects, global properties, and the database revisions prior to upgrading the Security Management Server.
- C. This command is no longer supported in GAIa.
- D. upgrade_export is used when upgrading the Security Gateway, and allows certain files to be included or excluded before exporting.

Correct Answer: A

Explanation

Explanation/Reference:

QUESTION 25

What are you required to do before running the command upgrade_export?

- A. Run a cpstop on the Security Management Server.
- B. Run a cpstop on the Security Gateway.
- C. Close all GUI clients.
- D. Run cpconfig and set yourself up as a GUI client.

Correct Answer: C

Explanation

Explanation/Reference:

QUESTION 26

A snapshot delivers a complete GAIa backup. The resulting file can be stored on servers or as a local file in /var/CPsnapshot/snapshots. How do you restore a local snapshot named MySnapshot.tgz?

- A. As expert user, type the command revert --file MySnapshot.tgz.
- B. As expert user, type the command snapshot -r MySnapshot.tgz.
- C. As expert user, type the command snapshot -R to restore from a local file. Then, provide the correct file name.
- D. Reboot the system and call the start menu. Select the option Snapshot Management, provide the Expert password and select [L] for a restore from a local file. Then, provide the correct file name.

Correct Answer: A
Explanation

Explanation/Reference:

QUESTION 27

What is the primary benefit of using the command `upgrade_export` over either backup or snapshot?

- A. The commands backup and snapshot can take a long time to run whereas `upgrade_export` will take a much shorter amount of time.
- B. `upgrade_export` will back up routing tables, hosts files, and manual ARP configurations, where backup and snapshot will not.
- C. `upgrade_export` has an option to back up the system and SmartView Tracker logs while backup and snapshot will not.
- D. `upgrade_export` is operating system independent and can be used when backup or snapshot is not available.

Correct Answer: D
Explanation

Explanation/Reference:

QUESTION 28

What is the syntax for uninstalling a package using `newpkg`?

- A. `-u <pathname of package>`
- B. `newpkg` CANNOT be used to uninstall a package
- C. `-i <full pathname of package>`
- D. `-S <pathname of package>`

Correct Answer: B
Explanation

Explanation/Reference:

QUESTION 29

Your primary Security Gateway runs on GAIa. What is the easiest way to back up your Security Gateway R76 configuration, including routing and network configuration files?

- A. Using the native GAIa backup utility from command line or in the Web based user interface.
- B. Copying the directories `$FWDIR/conf` and `$FWDIR/lib` to another location.
- C. Using the command `upgrade_export`.
- D. Run the `pre_upgrade_verifier` and save the `.tgz` file to the directory `/temp`.

Correct Answer: A
Explanation

Explanation/Reference:

QUESTION 30

You need to back up the routing, interface, and DNS configuration information from your R76 GAIa Security Gateway. Which backup-and-restore solution do you use?

- A. GAIa back up utilities
- B. `upgrade_export` and `upgrade_import` commands

- C. Database Revision Control
- D. Manual copies of the directory \$FWDIR/conf

Correct Answer: A

Explanation

Explanation/Reference:

QUESTION 31

You are running a R76 Security Gateway on SecurePlatform. In case of a hardware failure, you have a server with the exact same hardware and firewall version installed. What back up method could be used to quickly put the secondary firewall into production?

- A. manual backup
- B. snapshot
- C. upgrade_export
- D. backup

Correct Answer: B

Explanation

Explanation/Reference:

QUESTION 32

Before upgrading SecurePlatform, you should create a backup. To save time, many administrators use the command backup. This creates a backup of the Check Point configuration as well as the system configuration.

An administrator has installed the latest HFA on the system for fixing traffic problem after creating a backup file. There is a mistake in the very complex static routing configuration. The Check Point configuration has not been changed. Can the administrator use a restore to fix the errors in static routing?

- A. The restore is done by selecting Snapshot Management from the boot menu of GAiA.
- B. A backup cannot be restored, because the binary files are missing.
- C. The restore can be done easily by the command restore and selecting the file netconf.C.
- D. The restore is not possible because the backup file does not have the same build number (version).

Correct Answer: C

Explanation

Explanation/Reference:

QUESTION 33

Which operating systems are supported by a Check Point Security Gateway on an open server? Select MOST complete list.

- A. Check Point GAiA and SecurePlatform, and Microsoft Windows
- B. Check Point GAiA and SecurePlatform, IPSO, Sun Solaris, Microsoft Windows
- C. Check Point GAiA, Microsoft Windows, Red Hat Enterprise Linux, Sun Solaris, IPSO
- D. Sun Solaris, Red Hat Enterprise Linux, Check Point SecurePlatform, IPSO, Microsoft Windows

Correct Answer: A

Explanation

Explanation/Reference:

QUESTION 34

You intend to upgrade a Check Point Gateway from R71 to R76. Prior to upgrading, you want to back up the Gateway should there be any problems with the upgrade. Which of the following allows for the Gateway configuration to be completely backed up into a manageable size in the least amount of time?

- A. upgrade_export
- B. snapshot
- C. backup
- D. database revision

Correct Answer: C

Explanation

Explanation/Reference:

QUESTION 35

Your network is experiencing connectivity problems and you want to verify if routing problems are present. You need to disable the firewall process but still allow routing to pass through the Gateway running on an IP Appliance running IPSO. What command do you need to run after stopping the firewall service?

- A. ipsofwd on admin
- B. ipsofwd slowpath
- C. fw fwd routing
- D. fw load routed

Correct Answer: A

Explanation

Explanation/Reference:

QUESTION 36

The third-shift Administrator was updating Security Management Server access settings in Global Properties and testing. He managed to lock himself out of his account. How can you unlock this account?

- A. Delete the file admin.lock in the Security Management Server directory \$FWDIR/tmp/.
- B. Type fwm lock_admin -u <account name> from the Security Management Server command line.
- C. Type fwm unlock_admin -u from the Security Gateway command line.
- D. Type fwm unlock_admin from the Security Management Server command line.

Correct Answer: B

Explanation

Explanation/Reference:

QUESTION 37

The third-shift Administrator was updating Security Management Server access settings in Global Properties. He managed to lock all administrators out of their accounts. How should you unlock these accounts?

- A. Reinstall the Security Management Server and restore using upgrade_import.
- B. Delete the file admin.lock in the Security Management Server directory \$FWDIR/tmp/.
- C. Type fwm lock_admin -ua from the Security Management Server command line.
- D. Login to SmartDashboard as the special cpconfig_admin user account; right-click on each administrator object and select unlock.

Correct Answer: C

Explanation

Explanation/Reference:

QUESTION 38

You are the Security Administrator for ABC-Corp. A Check Point Firewall is installed and in use on SecurePlatform. You are concerned that the system might not be retaining your entries for the interfaces and routing configuration. You would like to verify your entries in the corresponding file(s) on SecurePlatform. Where can you view them? Give the BEST answer.

- A. /etc/conf/route.C
- B. /etc/sysconfig/network-scripts/ifcfg-ethx
- C. /etc/sysconfig/netconf.C
- D. /etc/sysconfig/network

Correct Answer: C

Explanation

Explanation/Reference:

QUESTION 39

When using SecurePlatform, it might be necessary to temporarily change the MAC address of the interface eth 0 to 00:0C:29:12:34:56. After restarting the network the old MAC address should be active.

```
# IP link set eth0 down
# IP link set eth0 addr 00:0C:29:12:34:56
# IP link set eth0 up
```

How do you configure this change?

- A. Edit the file /etc/sysconfig/netconf.C and put the new MAC address in the field
- B. As expert user, issue these commands:
- C. Open the WebUI, select Network > Connections > eth0. Place the new MAC address in the field Physical Address, and press Apply to save the settings.
- D. As expert user, issue the command: # IP link set eth0 addr 00:0C:29:12:34:56

Correct Answer: B

Explanation

Explanation/Reference:

QUESTION 40

Several Security Policies can be used for different installation targets. The Firewall protecting Human Resources' servers should have its own Policy Package. These rules must be installed on this machine and not on the Internet Firewall. How can this be accomplished?

- A. A Rule Base is always installed on all possible targets. The rules to be installed on a Firewall are defined by the selection in the Rule Base row Install On.
- B. A Rule Base can always be installed on any Check Point Firewall object. It is necessary to select the appropriate target directly after selecting Policy > Install on Target.
- C. When selecting the correct Firewall in each line of the Rule Base row Install On, only this Firewall is shown in the list of possible installation targets after selecting Policy > Install on Target.
- D. In the menu of SmartDashboard, go to Policy > Policy Installation Targets and select the correct firewall via Specific Targets.

Correct Answer: D

Explanation

Explanation/Reference:

QUESTION 41

How is wear on the flash storage device mitigated on diskless appliance platforms?

- A. The external PCMCIA-based flash extension has the swap file mapped to it, allowing easy replacement.
- B. A RAM drive reduces the swap file thrashing which causes fast wear on the device.
- C. Issue FW-1 bases its package structure on the Security Management Server, dynamically loading when the firewall is booted.
- D. PRAM flash devices are used, eliminating the longevity.

Correct Answer: B

Explanation

Explanation/Reference:

QUESTION 42

Your R76 primary Security Management Server is installed on GAIa. You plan to schedule the Security Management Server to run fw logswitch automatically every 48 hours. How do you create this schedule?

- A. Create a time object, and add 48 hours as the interval. Select that time object's Global Properties > Logs and Masters window, to schedule a logswitch.
- B. Create a time object, and add 48 hours as the interval. Open the primary Security Management Server object's Logs and Masters window, enable Schedule log switch, and select the Time object.
- C. On a SecurePlatform Security Management Server, this can only be accomplished by configuring the command fw logswitch via the cron utility.
- D. Create a time object, and add 48 hours as the interval. Open the Security Gateway object's Logs and Masters window, enable Schedule log switch, and select the Time object.

Correct Answer: B

Explanation

Explanation/Reference:

QUESTION 43

Which of the following commands can provide the most complete restoration of a R76 configuration?

- A. cpinfo -recover
- B. fwm dbimport -p <export file>
- C. upgrade_import
- D. cpconfig

Correct Answer: C

Explanation

Explanation/Reference:

QUESTION 44

When restoring R76 using the command upgrade_import, which of the following items are NOT restored?

- A. Licenses
- B. SIC Certificates
- C. Global properties
- D. Route tables

Correct Answer: D
Explanation

Explanation/Reference:

QUESTION 45

Your organization's disaster recovery plan needs an update to the backup and restore section to reap the new distributed R76 installation benefits. Your plan must meet the following required and desired objectives:

Required Objective: The Security Policy repository must be backed up no less frequently than every 24 hours.

Desired Objective: The R76 components that enforce the Security Policies should be backed up at least once a week.

Desired Objective: Back up R76 logs at least once a week.

Your disaster recovery plan is as follows:

- Use the cron utility to run the command `upgrade_export` each night on the Security Management Servers.
- Configure the organization's routine back up software to back up the files created by the command `upgrade_export`.
- Configure the GAIa back up utility to back up the Security Gateways every Saturday night.
- Use the cron utility to run the command `upgrade_export` each Saturday night on the log servers.
- Configure an automatic, nightly logswitch.
- Configure the organization's routine back up software to back up the switched logs every night.

Upon evaluation, your plan:

- A. Meets the required objective and only one desired objective.
- B. Meets the required objective but does not meet either desired objective.
- C. Meets the required objective and both desired objectives.
- D. Does not meet the required objective.

Correct Answer: C
Explanation

Explanation/Reference:

QUESTION 46

Your company is running Security Management Server R76 on GAIa, which has been migrated through each version starting from Check Point 4.1. How do you add a new administrator account?

- A. Using `cpconfig` on the Security Management Server, choose Administrators
- B. Using SmartDashboard, under Users, select Add New Administrator
- C. Using the Web console on SecurePlatform under Product configuration, select Administrators
- D. Using SmartDashboard or `cpconfig`

Correct Answer: B
Explanation

Explanation/Reference:

QUESTION 47

Peter is your new Security Administrator. On his first working day, he is very nervous and enters the wrong password three times. His account is locked. What can be done to unlock Peter's account? Give the BEST answer.

- A. It is not possible to unlock Peter's account. You have to install the firewall once again or abstain from Peter's help.
- B. You can unlock Peter's account by using the command `fwm unlock_admin -u Peter` on the Security Gateway.
- C. You can unlock Peter's account by using the command `fwm lock_admin -u Peter` on the Security Management Server.
- D. You can unlock Peter's account by using the command `fwm unlock_admin -u Peter` on the Security Management Server

Correct Answer: C

Explanation

Explanation/Reference:

QUESTION 48

Where can you find the Check Point's SNMP MIB file?

- A. `$CPDIR/lib/snmp/chkpt.mib`
- B. There is no specific MIB file for Check Point products.
- C. `$FWDIR/conf/snmp.mib`
- D. It is obtained only by request from the TAC.

Correct Answer: A

Explanation

Explanation/Reference:

QUESTION 49

You want to generate a `cpinfo` file via CLI on a system running GAiA. This will take about 40 minutes since the log files are also needed. What action do you need to take regarding timeout?

- A. Log in as Administrator, set the timeout to one hour with the command `idle 60` and start `cpinfo`.
- B. Log in as the default user `expert` and start `cpinfo`.
- C. No action is needed because `cpshell` has a timeout of one hour by default.
- D. Log in as `admin`, switch to `expert` mode, set the timeout to one hour with the command, `idle 60`, then start `cpinfo`.

Correct Answer: A

Explanation

Explanation/Reference:

QUESTION 50

Many companies have defined more than one administrator. To increase security, only one administrator should be able to install a Rule Base on a specific Firewall. How do you configure this?

- A. Define a permission profile in SmartDashboard with read/write privileges, but restrict it to all other firewalls by placing them in the Policy Targets field. Then, an administrator with this permission profile cannot install a policy on any Firewall not listed here.
- B. Put the one administrator in an Administrator group and configure this group in the specific Firewall object in Advanced > Permission to Install.
- C. Right-click on the object representing the specific administrator, and select that Firewall in Policy Targets.
- D. In the object General Properties representing the specific Firewall, go to the Software Blades product list and select Firewall. Right-click in the menu, select Administrator to Install to define only this

administrator.

Correct Answer: B

Explanation

Explanation/Reference:

QUESTION 51

What is the officially accepted diagnostic tool for IP Appliance Support?

- A. ipsoinfo
- B. cpinfo
- C. uag-diag
- D. CST

Correct Answer: D

Explanation

Explanation/Reference:

QUESTION 52

ALL of the following options are provided by the SecurePlatform sysconfig utility, EXCEPT:

- A. Export setup
- B. Time & Date
- C. DHCP Server configuration
- D. GUI Clients

Correct Answer: D

Explanation

Explanation/Reference:

QUESTION 53

Which of the following options is available with the GAiA cpconfig utility?

- A. Time & Date
- B. GUI Clients
- C. DHCP Server configuration
- D. Export setup

Correct Answer: B

Explanation

Explanation/Reference:

QUESTION 54

Which command would provide the most comprehensive diagnostic information to Check Point Technical Support?

- A. cpstat - date.cpstat.txt
- B. fw cpinfo
- C. cpinfo -o date.cpinfo.txt
- D. diag

Correct Answer: C

Explanation

Explanation/Reference:

QUESTION 55

Which of the following statements accurately describes the command snapshot?

- A. snapshot creates a Security Management Server full system-level backup on any OS.
- B. snapshot stores only the system-configuration settings on the Gateway.
- C. A Gateway snapshot includes configuration settings and Check Point product information from the remote Security Management Server.
- D. snapshot creates a full OS-level backup, including network-interface data, Check Point product information, and configuration settings during an upgrade of a SecurePlatform Security Gateway.

Correct Answer: D

Explanation

Explanation/Reference:

QUESTION 56

How do you recover communications between your Security Management Server and Security Gateway if you lock yourself out through a rule or policy mis-configuration?

- A. fw delete all.all@localhost
- B. fw unload policy
- C. fwm unloadlocal
- D. fw unloadlocal

Correct Answer: D

Explanation

Explanation/Reference:

QUESTION 57

How can you check whether IP forwarding is enabled on an IP Security Appliance?

- A. clish -c show routing active enable
- B. ipsofwd list
- C. cat /proc/sys/net/ipv4/ip_forward
- D. echo 1 > /proc/sys/net/ipv4/ip_forward

Correct Answer: B

Explanation

Explanation/Reference:

QUESTION 58

Which command allows you to view the contents of an R76 table?

- A. fw tab -s <tablename>
- B. fw tab -t <tablename>
- C. fw tab -x <tablename>
- D. fw tab -a <tablename>

Correct Answer: B

Explanation

Explanation/Reference:

QUESTION 59

Which of the following tools is used to generate a Security Gateway R76 configuration report?

- A. infoCP
- B. cpinfo
- C. infoview
- D. fw cpinfo

Correct Answer: B

Explanation

Explanation/Reference:

QUESTION 60

Which of the following is a CLI command for Security Gateway R76?

- A. fw merge
- B. fw tab -u
- C. fw shutdown
- D. fwm policy_print <policyname>

Correct Answer: B

Explanation

Explanation/Reference:

QUESTION 61

You are the Security Administrator for MegaCorp. A Check Point firewall is installed and in use on a platform using GAiA. You have trouble configuring the speed and duplex settings of your Ethernet interfaces. Which of the following commands can be used in Expert Mode to configure the speed and duplex settings of an Ethernet interface and will survive a reboot? Give the BEST answer.

- A. eth_set
- B. mii_tool
- C. ifconfig -a
- D. ethtool

Correct Answer: A

Explanation

Explanation/Reference:

QUESTION 62

Select the correct statement about Secure Internal Communications (SIC) Certificates. SIC Certificates:

- A. Are used for securing internal network communications between the SmartDashboard and the Security Management Server.
- B. For R75 Security Gateways are created during the Security Management Server installation.
- C. Decrease network security by securing administrative communication among the Security Management Servers and the Security Gateway.

To Read the [Whole Q&As](#), please purchase the [Complete Version](#) from [Our website](#).

Trying our product !

- ★ **100%** Guaranteed Success
- ★ **100%** Money Back Guarantee
- ★ **365 Days** Free Update
- ★ **Instant Download** After Purchase
- ★ **24x7** Customer Support
- ★ Average **99.9%** Success Rate
- ★ More than **69,000** Satisfied Customers Worldwide
- ★ Multi-Platform capabilities - **Windows, Mac, Android, iPhone, iPod, iPad, Kindle**

Need Help

Please provide as much detail as possible so we can best assist you.

To update a previously submitted ticket:

A green button with a white border and a torn paper effect on the left side, containing the text "Submit A Ticket".

Submit A Ticket

One Year Free Update

Free update is available within One Year after your purchase. After One Year, you will get 50% discounts for updating. And we are proud to boast a 24/7 efficient Customer Support system via Email.

100%

Money Back Guarantee

To ensure that you are spending on quality products, we provide 100% money back guarantee for 30 days from the date of purchase.

Security & Privacy

We respect customer privacy. We use McAfee's security service to provide you with utmost security for your personal information & peace of mind.

Guarantee & Policy | Privacy & Policy | Terms & Conditions

Any charges made through this site will appear as Global Simulators Limited.

All trademarks are the property of their respective owners.

Copyright © 2004-2015, All Rights Reserved.

Get Latest & Actual IT Exam Dumps with VCE and PDF from [Pass4itSure](#).

<https://www.Pass4itSure.com>