

Exam : 0b0-103

Title : BEA8.1 Certified
Developer: Integration
Solutions

Version : DEMO

www.Pass4itSure.com

1. Consider this code snippet:

```
try {
MBeanHome home = getMBeanHome(url, username, password);
ApplicationRuntimeMBean app = getApplicationRuntimeMBean(home, appName);
WebAppComponentRuntimeMBean webapp = getWebAppComponentRuntimeMBean(app, ctxRoot);
ServletRuntimeMBean servlet = getServletRuntimeMBean(webapp, servletName);
System.out.println("Invocation count is " +
servlet.getInvocationTotalCount());
} catch (Exception e) {
System.out.println("Exception caught: " + e);
}
}
```

What information does the code provide?

- A. Runtime information about all Servlet Sessions
- B. Runtime invocation totals for a Servlet
- C. Runtime information for all Servlets on a specific server
- D. Configuration information defined in the deployment descriptors of all Servlets
- E. Runtime information for all Servlets that have been invoked at least once

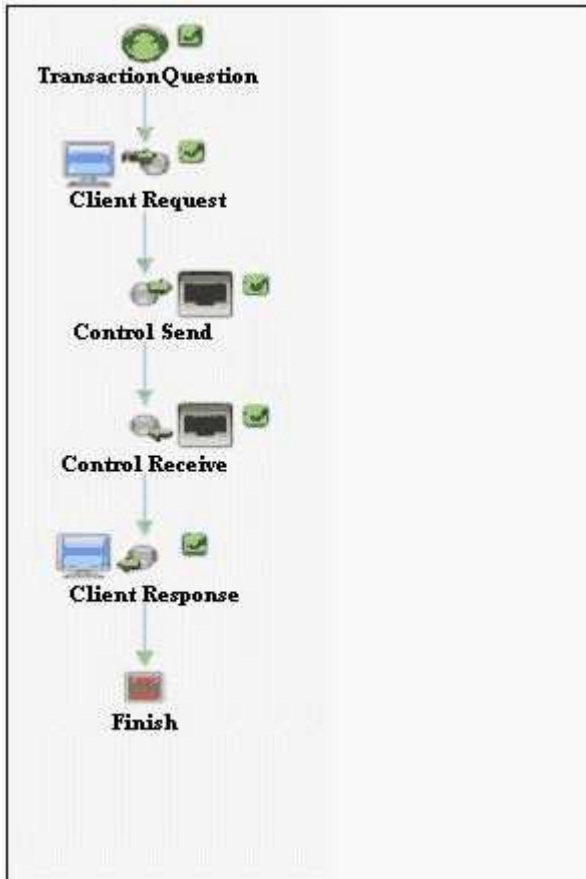
Answer: B

2. A mainframe batch process extracts sales information from a legacy point-of-sale system, nightly. The batch process deposits this information in a binary file in the directory /usr/local/POS/salesdata/ftp_report_sales_daily . What is the best way to access the data in your process definition?

- A. Use an FTP control that is called synchronously from the process definition.
- B. Create an Application View to access a J2CA adaptor that integrates with the legacy mainframe application, and call an Application View control from your process.
- C. Use a File control that is configured to read ftp_report_sales_daily from the directory /usr/local/POS/salesdata .
- D. Create an Application View to integrate with the FTP server and call an Application View control from your process.
- E. Use an FTP control that is called asynchronously from the process definition.

Answer: C

3. Click the Exhibit button at the bottom of the screen. Consider this JPD diagram: All transaction demarcation is performed by WLI (not by the control code). Successful execution of this process results in how many transactions?



- A. 1
- B. 2
- C. 3
- D. 4
- E. 0

Answer: B

4. Which is NOT a valid setting for the conversation phase of a Web service operation?

- A. none
- B. start
- C. finish
- D. suspend

E. continue

Answer: D

5. You have finished creating your process definition. The definition is somewhat complex, and it involves multiple entry points and branches; you want to step through the definition to test for correct execution and flow. You created a complex XQuery that maps a purchase order XML document onto arguments of a Web service method. In WebLogic Workshop, what is the easiest way to test the validity of this XQuery expression?

- A. In Format Builder, set a breakpoint on the first line of the MFL file.
- B. Display the transformation control in Design View, and select the Test View tab of the XQuery method.
- C. Set a breakpoint on the XQuery method when displaying the transformation control in Design View.
- D. You cannot test an XQuery expression in Workshop.
- E. Set a breakpoint on the called method of the Web service and use the service's test page to verify that data was converted correctly by the XQuery expression.

Answer: B

6. Which statement about the use of Application Views is correct?

- A. Publishing an Application View results in the creation of an EAR file.
- B. Publishing an Application View results in the creation of an EJB JAR file.
- C. The control must be created in the Application Integration Design Console.
- D. The Application View must be created in Workshop before the control can be created.
- E. The Application View must be created in the Integration Administration console before the control can be created.

Answer: B

7. Conglomo Communications, the nation's second leading cable TV provider, plans to provide application integration with an existing program directory. Conglomo will automate the service and sell it to subscribers. Conglomo has a business requirement to notify all content subscribers when listings are added, removed or changed in the programming database. What is one advantage of using an Application View provided by the WebLogic RDBMS adaptor, rather than a Database control, to satisfy

this requirement?

- A. There is no advantage; it would be more complex to create and call the Application View than to use direct database access.
- B. The Application View can define INSERT, UPDATE and DELETE events that can be automatically handled by the workflow and generate the notification.
- C. The Application View can work directly with the XML Schema that is used by the node-handling notification.
- D. You must create an Database Control Application View, because this is the only way the workflow can use a database.
- E. An RDBMS Application View is more reusable, because it can also be called by other JPDs and Web services in the application.

Answer: B

8. In Workshop, inserting a control that invokes a Web service requires specifying one of two files. Which item is one of them?

- A. An XSD file
- B. A WSDL file
- C. A DTF file
- D. A SOAP configuration file
- E. An application configuration file

Answer: B

9. Consider this XML Schema:

```
<?xml version="1.0"?>
<xsd:schema targetNamespace="http://www.example.org/customer" xmlns:xsd="http://www.w3.org/2001/XMLSchema">
  <xsd:element name="customerData">
    <xsd:complexType>
      <xsd:sequence>
        <xsd:element name="name" type="xsd:string"/>
        <xsd:element name="address" type="xsd:string"/>
      </xsd:sequence>
    </xsd:complexType>
  </xsd:element>
</xsd:schema>
```

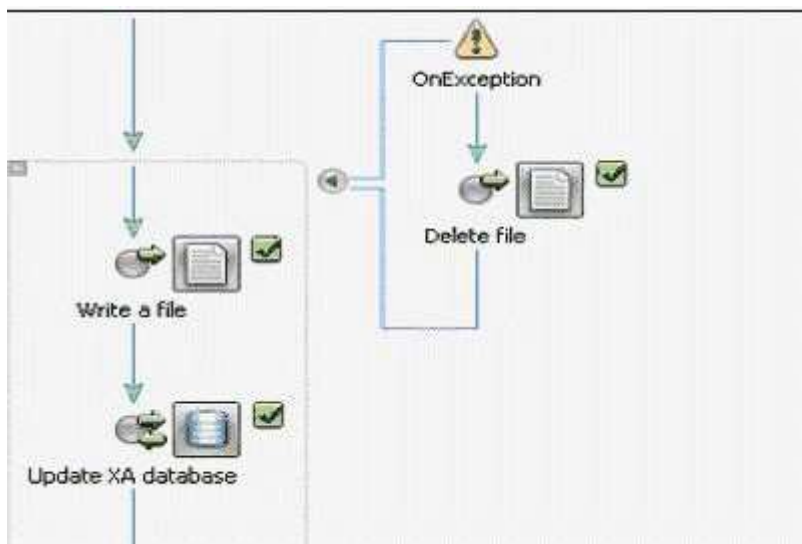
Which XMLBean interface is generated from this Schema?

- A. org.example.customer.CustomerData.Name

- B. org.example.customer.customerData.Name
- C. org.example.customer.CustomerDataDocument
- D. org.example.customer.CustomerData.Address
- E. org.example.www.customer.CustomerData.Address

Answer: C

10. Click the Exhibit button at the bottom of the screen. Consider this process: Two nodes are running in the same transaction. The first node writes to a file (non-transactional) and the second node updates a database (transactional). Both nodes are within a group with an exception handler. The exception handler's execute on rollback property is set to true . Which statement is true?



- A. If the database update fails and marks the transaction for roll back only, the file is deleted before the transaction rolls back.
- B. If the database update fails and marks the transaction for roll back only, the file is deleted after the transaction rolls back.
- C. Because the file was not written to with an XA transactional driver, it cannot be deleted from the exception path. Therefore the attempt to do so in the exception path always generates an exception.
- D. Because transaction demarcation is implicit, failure of the database update cannot result in deletion of a file that was successfully written by the previous node. Therefore the attempt to do so in the exception path always generates an exception.
- E. It cannot be known which statement is true, unless the value of the exception path's after execute

property is known.

Answer: A

www.Pass4itSure.com

Trying our product !

- ★ **100%** Guaranteed Success
- ★ **100%** Money Back Guarantee
- ★ **365 Days** Free Update
- ★ **Instant Download** After Purchase
- ★ **24x7** Customer Support
- ★ Average **99.9%** Success Rate
- ★ More than **69,000** Satisfied Customers Worldwide
- ★ Multi-Platform capabilities - **Windows, Mac, Android, iPhone, iPod, iPad, Kindle**

Need Help

Please provide as much detail as possible so we can best assist you.

To update a previously submitted ticket:



Submit A Ticket

One Year Free Update



Free update is available within One Year after your purchase. After One Year, you will get 50% discounts for updating. And we are proud to boast a 24/7 efficient Customer Support system via Email.



Money Back Guarantee

To ensure that you are spending on quality products, we provide 100% money back guarantee for 30 days from the date of purchase.



Security & Privacy

We respect customer privacy. We use McAfee's security service to provide you with utmost security for your personal information & peace of mind.

Guarantee & Policy | Privacy & Policy | Terms & Conditions

Any charges made through this site will appear as Global Simulators Limited.

All trademarks are the property of their respective owners.

Copyright © 2004-2014, All Rights Reserved.