



050-696^{Q&As}

Foundations of Novell Open Enterprise Server NetWare

Pass Novell 050-696 Exam with 100% Guarantee

Free Download Real Questions & Answers **PDF** and **VCE** file from:

<https://www.pass4itsure.com/050-696.html>

100% Passing Guarantee
100% Money Back Assurance

Following Questions and Answers are all new published by Novell
Official Exam Center

-  **Instant Download** After Purchase
-  **100% Money Back** Guarantee
-  **365 Days** Free Update
-  **800,000+** Satisfied Customers



**QUESTION 1**

Which utility can be used to access and run OES NetWare installation files stored on another NetWare server in the network to perform an across-the-wire installation?

- A. iManager
- B. Remote Manager
- C. NetWare Deployment Manager
- D. IP Server Connection Utility

Correct Answer: D

QUESTION 2

You're implementing NSS volumes on an OES NetWare server. Your server has one 200 GB SCSI hard disk drive. You plan to create one NSS partition that will encompass the entire drive. You plan to create two storage pools that will be associated with this partition: SYS_POOL DATA_POOL You want to create the SYS volume in the SYS_POOL. You want to create two NSS logical volumes named DATA and SHARED in the DATA_POOL.

Will this design work?

- A. Yes, all NSS requirements have been met.
- B. No, NSS doesn't support SCSI hard disk drives.
- C. No, NSS partitions can't be larger than 80 GB.
- D. No, the SYS volume must be a Traditional volume.
- E. No, you can't create two NSS storage pools on the same server.
- F. No, you can't create two NSS storage pools in the same NSS disk partition.
- G. No, you can't create multiple NSS logical volumes in the same NSS storage pool.

Correct Answer: F

QUESTION 3

On an OES NetWare server, _____ is used as the default file system.

Correct Answer: NSS

**QUESTION 4**

What information is contained within the Object Trustees (ACL) property of an eDirectory object?

- A. The globally unique ID (GUID) of the object.
- B. A list of rights the object has to other eDirectory objects.
- C. A list of other eDirectory objects that the object has rights to.
- D. The names of all trustees of the object and the rights granted to these trustees.

Correct Answer: D

QUESTION 5

You have several OES NetWare servers in your server room. You want to disable the SOUND BELL FOR ALERTS parameter to eliminate excessive beeps. Which command would you use to do this?

- A. SOUND BELL FOR ALERTS = OFF
- B. DISABLE SOUND BELL FOR ALERTS
- C. SET SOUND BELL FOR ALERTS = OFF
- D. SOUND BELL FOR ALERTS = DISABLED
- E. SET SOUND BELL FOR ALERTS = DISABLED

Correct Answer: C

QUESTION 6

You've just created an A record in your organization's DNS server for your iPrint server. The iprint.myorg.com DNS record resolves to your iPrint server's IP address, which is 10.200.200.1. Your Print Manager's name is PRMAN. You need to

load your Print Manager software on the server with domain name support enabled.

Which server console command will do this?

- A. NDPSM PRMAN
- B. NDPSM PRMAN iprint.myorg.com
- C. NDPSM PRMAN /dnsname=iprint.myorg.com



D. IPRINTMAN PRMAN /dnsname=iprint.myorg.com

Correct Answer: C

QUESTION 7

Which describes the role of the iPrint printer agent?

- A. It downloads the correct print driver to the workstation.
- B. It responds to queries from clients about the status of a print job.
- C. It provides a platform for printer objects that reside on the server.
- D. It allows NDPS clients to send print jobs to printers that are not NDPS-aware.
- E. It redirects print jobs to a directory on the server while waiting for the printer to become available.
- F. It takes application-specific data from the application creating the print job and reformats it to work with the printer it is being sent to.

Correct Answer: B

QUESTION 8

Which of the following must be taken into account when calculating a user's effective rights to other objects in the tree? (Choose 2.)

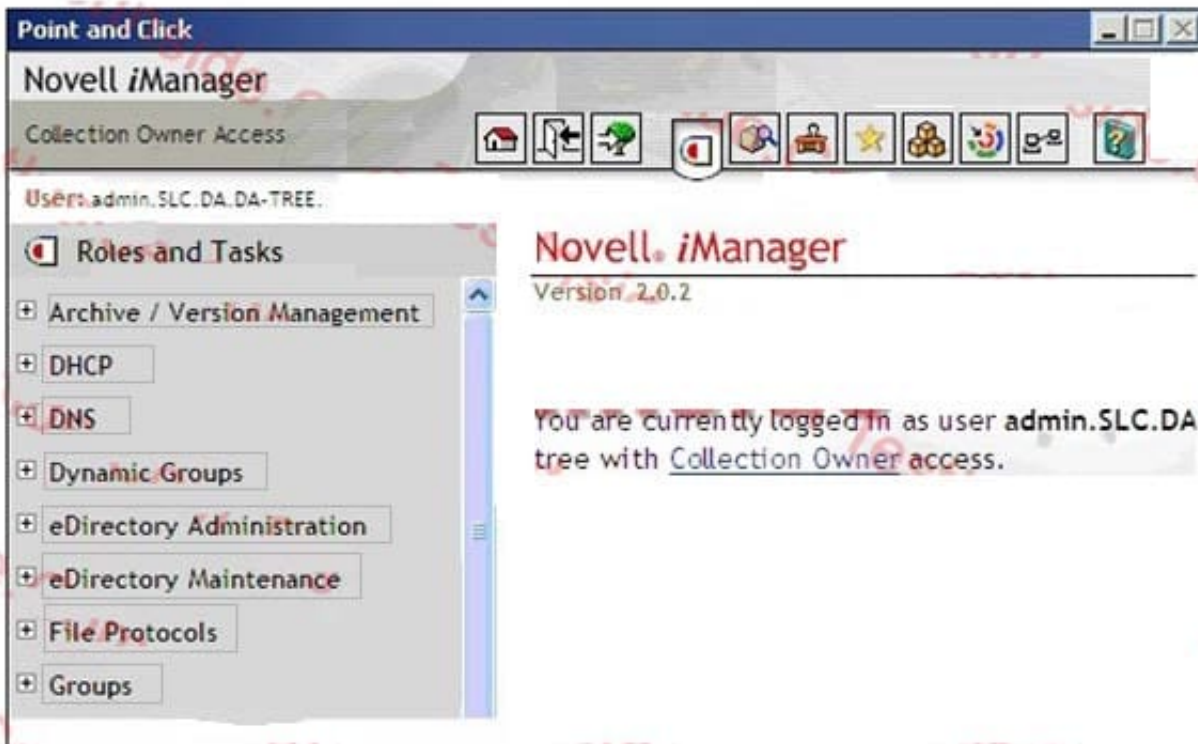
- A. Rights assigned to Public.
- B. Groups the user is a member of.
- C. Objects that are trustees of the user object.
- D. Rights assigned to the server the user logs into.
- E. Rights assigned to other objects in the user's container.

Correct Answer: AB

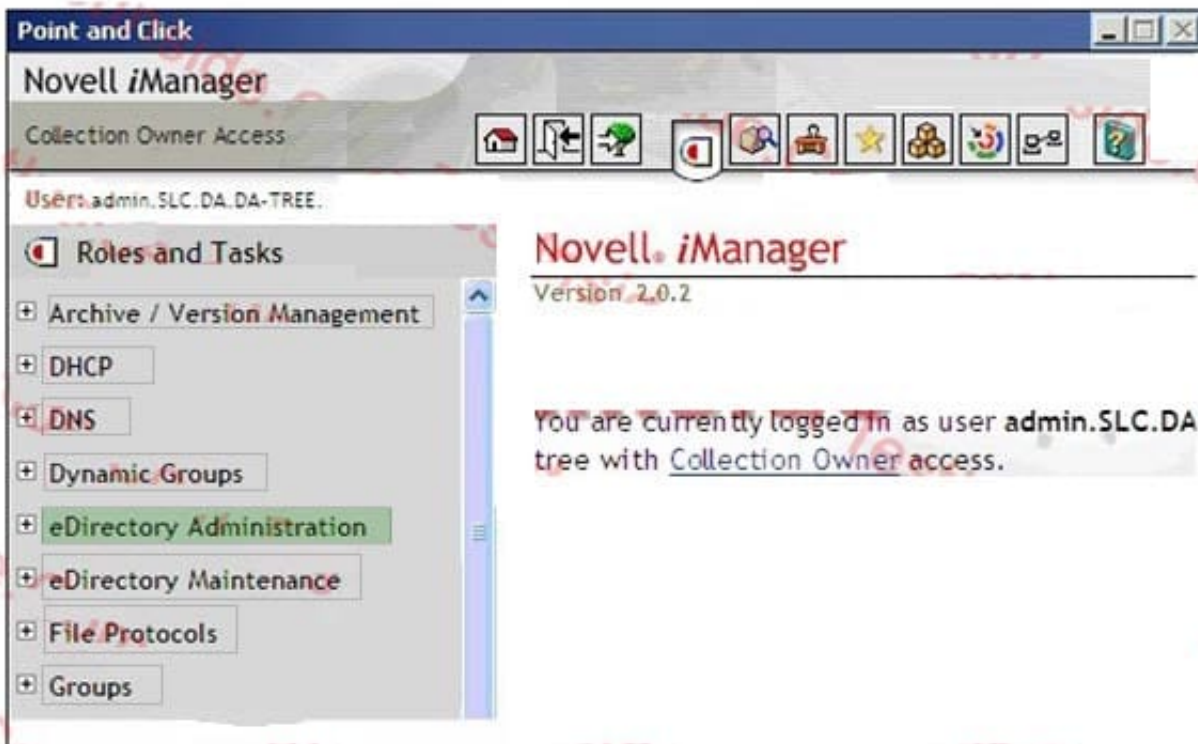
QUESTION 9

Click on the option in iManager you would use to create a new user object.

Hot Area:



Correct Answer:



**QUESTION 10**

What properties are added to User objects when the eDirectory schema is extended to support iFolder? (Choose 2.)

- A. iFolderQuota
- B. iFolderUserName
- C. iFolderPassword
- D. iFolderLDAPServer
- E. iFolderServerName
- F. iFolderHomeDirectory

Correct Answer: AE

QUESTION 11

Your company has four regional offices. You are the head Network administrator for the entire organization. Each regional office has its own network administrator. You want to designate each regional network administrator as the container administrator for his or her own context in the tree, but not for any other context. Which rights assignment should you make for each container administrator? (Choose 2.)

- A. The Create right to the root of the tree.
- B. The Delete right to the root of the tree.
- C. The Create right to the Security container.
- D. The Delete right to the Security container.
- E. The Supervisor right to the root of the tree.
- F. The Supervisor right to topmost container in their context.
- G. All rights to the topmost container in their context.

Correct Answer: FG

QUESTION 12

Which namespaces are enabled by default on OES NetWare volumes? (Choose 2.)

- A. SMB



- B. Long
- C. UNIX
- D. NetWare
- E. Extended

Correct Answer: BC

QUESTION 13

In your eDirectory tree, user DCoughanour is given an explicit trustee assignment to the IS.SYD. DA Organizational Unit object. He is granted Browse and Rename rights to this container. DCoughanour has no explicit assignments anywhere higher in the tree.

User JJackson is given an explicit trustee assignment to the SYD. DA Organizational Unit. He is granted Browse, Create, and Rename rights to the container. You make DCoughanour security equivalent to JJackson. What effective rights

does DCoughanour have to IS.SYD. DA?

- A. Browse
- B. Supervisor
- C. Browse and Rename
- D. Browse, Create, and Rename
- E. Supervisor, Browse, Create, and Rename
- F. DCoughanour has no rights to the container.

Correct Answer: D

QUESTION 14

Which file extension is used for network board drivers in OES NetWare?

- A. .NCF
- B. .LAN
- C. .HAM
- D. .CDM



E. .NLM

Correct Answer: B

QUESTION 15

You are installing OES NetWare on new server hardware. The server has dual Pentium 4 CPUs running at 2 GHz, 1 GB of RAM, an integrated 64-bit PCI network board, and mirrored 200 GB hard disk drives. You power on the server and insert the OES NetWare Operating System CD in the server's CD drive. However, the NetWare installation program doesn't run. Instead, you see a message that states "Operating system not found. Please insert a disk in drive A:, then press any key." What is causing this problem?

- A. The OES NetWare installation program doesn't support dual CPUs.
- B. The system must be booted from the OES NetWare Products CD first.
- C. The server's BIOS is not configured to boot from the CD-ROM drive.
- D. The OES NetWare installation program doesn't support integrated network boards.
- E. The OES NetWare installation program isn't compatible with 64-bit PCI network boards.
- F. The server's hard disk drives must be partitioned and formatted before you can install OES NetWare.

Correct Answer: C

[Latest 050-696 Dumps](#)

[050-696 Practice Test](#)

[050-696 Exam Questions](#)