

# 100% Money Back Guarantee

**Vendor:** IBM

**Exam Code:** 000-570

**Exam Name:** IBM Maximo Asset Management V7.5  
Implementation

**Version:** Demo

**QUESTION NO: 1**

A customer has an escalation that requires notifications to go to both Marie Smith and her supervisor Lee Tsumi. How can both users be included as recipients on a communication template?

- A. Create a role for both Marie and Lee
- B. Create a Person Group with Marie as the primary
- C. Add both e-mail addresses on the Recipients tab
- D. Include both user e-mails in the Recipient field separated by a colon

**Answer: C**

**QUESTION NO: 2**

Which IBM Maximo Asset Management location status is necessary to associate a location with a system?

- A. Active
- B. Ready
- C. Operating
- D. Decommissioned

**Answer: C**

**QUESTION NO: 3**

An asset is created and measurement points are associated. Which IBM Maximo Asset Management V7.5 application sets Upper Limit and Lower Limit Job Plans?

- A. Meters
- B. Assets
- C. Condition Monitoring
- D. Work Order Tracking

**Answer: C**

**QUESTION NO: 4**

What does the Enable Repair Facilities Organization option allow?

- A. Creating a work order in a site different from the site of the asset on that work order
- B. Reserving items from one site to use at another site on an emergency maintenance work order
- C. Moving an asset from one location to another location on an emergency maintenance work order
- D. Creating a preventive maintenance (PM) record in a site different from the site of the asset on that PM

**Answer: A**

**QUESTION NO: 5**

Which property is used to define the directory used when importing data using the Integration Framework?

- A. Mxe.int.dir
- B. Mxe.int.localdir
- C. Mxe.int.globaldir
- D. Mxe.int.accessdir

**Answer: C**

**QUESTION NO: 6**

After fully receiving a shipment it is discovered that the item or tool has been received incorrectly. How can a receipt be reversed from the Shipment Receiving application?

- A. Find the shipment receipt, change the status to VOID from the Select Action menu, click Save
- B. Find the shipment receipt, click the checkbox Void Receipt for each line to be reversed, click Save
- C. Find the shipment receipt, click the button Select Receipt to Void, select each line to be voided,

click OK

D. Find the shipment receipt, click the button Select Records to Void, select each line to be voided, click OK

**Answer: D**

**QUESTION NO: 7**

What is the purpose of commodity codes?

- A. To group like items for issue
- B. To group like items for purchasing
- C. To group like items for classification
- D. To group like items for asset bill of material

**Answer: B**

**QUESTION NO: 8**

What are two uses for the Assignment Manager application? (Choose two.)

- A. To dispatch labor and schedule work for an organization
- B. To create and manage work orders for assets and locations
- C. To report labor transactions by labor, by vendor/contract, by work order, or by ticket
- D. To specify which organizations and sites can use the information that is on the job plan and its tasks
- E. To view the requirements that were created from the work plan as well as the unplanned work on a work order

**Answer: A,E**

**QUESTION NO: 9**

What comprises a failure code?

- A. Failure, affect, fix
- B. Issue, reason, resolution
- C. Problem, cause, remedy
- D. Situation, impact, solution

**Answer: D**

**QUESTION NO: 10**

What does an active workflow process define?

- A. The flow of work in Application Designer
- B. The process to add an attribute to an application
- C. The different work to be performed by the lead craft
- D. The different paths that a record can take as it moves through a business process

**Answer: C**

**QUESTION NO: 11**

When creating a purchase request line by using the Select Spare Parts button, refined search is allowed by specifying at least one of which two data fields? (Choose two.)

- A. Site ID
- B. Description
- C. Item Number
- D. Asset Number
- E. Organization ID

**Answer: A,D**

**QUESTION NO: 12**

Which standard relationship is the container relationship for assets?

- A. BACKUPS
- B. INCLUDES
- C. CONNECTS
- D. INTERSECTS

**Answer: B**

**QUESTION NO: 13**

Which method is used to view labor hours, costs, and material costs for a particular work order?

- A. from the Work Order Tracking application, select the Cost tab
- B. from the Work Order Tracking application, go to the Select Action menu and select View > Costs
- C. from the Actuals tab of Work Order Tracking application, download and summarize each of the table windows for Labor, Materials, Services, and Tools
- D. navigate to the Cost Management application, query for the work order in question to view estimated and actual hours and costs for labor in addition to estimated and actual costs for materials and service

**Answer: B**

**QUESTION NO: 14**

Which statement is true to review the content of a scheduled report?

- A. Use the Report Administration application to view and select from a list of report outputs
- B. Use the Report Administration application to choose the correct report and then click the View button
- C. Use the URL from the link supplied in the e-mail to access a PDF file served up directly by the HTTP server
- D. Access the URL from the link supplied in the e-mail and then log into Maximo and select the Download Content button

**Answer: D**

**QUESTION NO: 15**

In the Receiving application, what does the Quantity Accepted field indicate?

- A. The quantity of items that passed inspection
- B. The quantity of items accepted for inspection
- C. The quantity of items that received inspection
- D. The quantity of items that are awaiting inspection

**Answer: A**

**QUESTION NO: 16**

If the Integrity Checker utility tool reports that some groups have no privileges in the Maximo security tables, how could this be resolved?

- A. Run the integrity checker in repair mode
- B. Run the integrity checker in backup mode
- C. Create a new Maximo Security group for the Maximo security tables and run the Integrity Checker utility again
- D. Create a new security group with all grants on the Maximo security tables and run the Integrity Checker utility again

**Answer: A**

**QUESTION NO: 17**

A forecast for a preventive maintenance record has been generated. How can the forecast date be adjusted from the Preventive Maintenance application?

- A. From the Forecast tab, select a forecast row, enter a value in the New Date field, click Save
- B. From the Select Action menu, select Generate Forecast, enter a value in the Forecast Days field, click OK
- C. From the Frequency tab, select the Time Based Frequency tab, enter a value in the Frequency field, click Save
- D. From the Frequency tab, select the Time Based Frequency tab, enter a value in the Extended Date field, click Save

**Answer: A**

**QUESTION NO: 18**

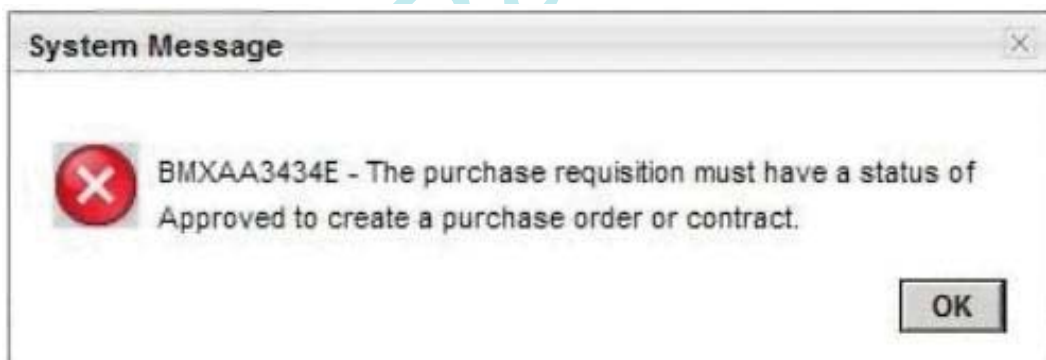
What is the definition of a work package?

- A. It groups existing work orders under a new parent work order.
- B. It is a preventive maintenance work order hierarchy that has been created from a route.
- C. It is a work order linked to all the originating services requests for the work order and is created from the Related Records tab.
- D. It is a group of work orders in Waiting to be Scheduled status that are the responsibility of one person and is created in the Assignment Manager application.

**Answer: A**

**QUESTION NO: 19**

A company has deployed IBM Maximo Asset Management V7.5 (Maximo) to manage the company assets and the purchasing process. The company's purchasing process does not require an approved purchase request (PR) in order to generate a new purchase order (PO) but the buyer reported this problem when trying to create a new PO from an unapproved PR:



Where can this validation be turned off in Maximo?

- A. Organizations application
- B. Purchase Orders application
- C. System Properties application
- D. Database Configuration application

**Answer: D**



**QUESTION NO: 20**

Which function is performed in the Quick Reporting application?

- A. Create failure code hierarchies
- B. Create job plans and safety plans
- C. Create preventive maintenance schedules
- D. Report actual labor, materials, and tools used in the work

**Answer: D**

**QUESTION NO: 21**

Which two items must be created before an organization can be active? (Choose two.)

- A. Site
- B. Item Set
- C. Currency Code
- D. Primary Vendor
- E. Financial Period

**Answer: B,C**

**QUESTION NO: 22**

A reservation is created when a work order is approved with item(s) on the Work Order Plans Materials sub-tab. Which action controls when an item must be specified with a hard reservation?

- A. Change the reservation type on the materials line to HARD
- B. Change the reservation type on the reservation list to HARD
- C. Set the reservation type to HARD within the Organization > Inventory Options
- D. Set the flag on this check box within the Inventory application: Requires hard reservation on use?

**Answer: A**

**QUESTION NO: 23**

Which statement applies to relationships?

- A. They can use locations.
- B. They can be used with locations.
- C. They can be defined as bidirectional.
- D. They can be defined as non-directional.

**Answer: C**

**QUESTION NO: 24**

Which three data elements on the Plans tab of the Work Order Tracking application can be restricted from editing or adding new values based on the work order's status (Organization > Work Order Options > Edit Rules)? (Choose three)

- A. Creating or editing planned tools
- B. Creating or editing planned tasks
- C. Adding or changing the failure class
- D. Creating or editing planned materials
- E. Creating or editing planned labor entries
- F. Creating or associating a child work order

**Answer: A,D,E**

**QUESTION NO: 25**

How is the order determined in which tax codes are used?

- A. Tax code options from the Tax application
- B. Tax options from the Organizations application
- C. Tax options from the Purchase Orders application

**Answer: B**

**QUESTION NO: 26**

Which statement is true related to job plan revisions?

- A. A job plan must be in a status of DRAFT or PNDREV for updates and edits to the job plan tab.
- B. When a job plan is revised, all existing work orders with the job plan attached are updated with the revised version.
- C. Caution must be used to select the most recent job plan revision when applying a job plan to a work order or preventive maintenance record.
- D. When a job plan has been revised, IBM Maximo Asset Management V7.5 tracks all changes from previous versions. These changes are available for viewing from Select Action > View Revision History.

**Answer: A**

**QUESTION NO: 27**

What can be defined on a work order?

- A. Name
- B. Location
- C. Security Group
- D. Report Template

**Answer: C**

**QUESTION NO: 28**

Which contract type defines the agreement to maintain one or more assets with an outside service provider for a fee or a scheduled set of payments?

- A. Service Contract
- B. Warranty Contract
- C. Purchase Contract
- D. Labor Rate Contract

**Answer: B**

**QUESTION NO: 29**

Which option attaches an image to an item master record in the Item Master application?

- A. Clicking on the Image icon
- B. Clicking on the Attachments icon
- C. Select Action > Add/Modify Image
- D. Select Action > Attachment/Library Folders

**Answer: C**

**QUESTION NO: 30**

When a work order is created from a preventive maintenance record that references a route, the route stops will become child work orders with a common job plan. From which record will the resulting parent work order description be created?

- A. It will be the same as the route description.
- B. It will be the same as the job plan description.
- C. It will be null, to be updated with a description specific to the job.
- D. It will be the same as the preventive maintenance record description.

**Answer: D**

**QUESTION NO: 31**

What is the standard default status of a purchase order when it is created in IBM Maximo Asset Management V7.5?

- A. New
- B. Created
- C. In Progress
- D. Waiting on Approval

**Answer: D**

**QUESTION NO: 32**

Which type of role is defined as: You use this data type to route a record based on information in a person record?

- A. USER
- B. PERSON
- C. USERDATA
- D. PERSONGROUP

**Answer: B**

**QUESTION NO: 33**

What are three components used to build an IBM Maximo Asset Management V7.5 safety plan? (Choose three.)

- A. Routes
- B. Assets
- C. Hazards
- D. Tag Outs
- E. PM Records
- F. Condition Monitoring Points

**Answer: B,C,D**

**QUESTION NO: 34**

What is required to create an escalation?

- A. Site
- B. Schedule
- C. Condition
- D. Description

**Answer: B**

**QUESTION NO: 35**

When defining new reports in the various IBM Maximo Asset Management applications, which statement is true about browser shortcuts created for those reports?

- A. Shortcuts can be created as hyperlinks
- B. Shortcuts can be created for any report
- C. Shortcuts can be created in the Application Designer
- D. Shortcuts can be created for a report that has no parameters

**Answer: D**

**QUESTION NO: 36**

What are two ways an administrator can add an existing attribute to the Work Order Tracking application? (Choose two.)

- A. Conditional UI application > select WOTRACK, select the new attribute, click the Show button
- B. Database Configuration application > select WORKORDER object, select the new attribute, click the Show button
- C. Application Designer application > under Select Action menu select the Add/Modify Attributes option, add the new attribute to the canvas
- D. Application Designer application > select WOTRACK, drag and drop the appropriate control to the canvas, configure the control properties to bind the new attribute
- E. Application Designer application > select WOTRACK application, export the presentation XML file, make appropriate changes in the XML file, import the presentation XML file

**Answer: D,E**

**QUESTION NO: 37**

What is the purpose of Stock Categories in IBM Maximo Asset Management V7.5?

- A. To define whether an item can be placed in inventory
- B. To define whether an item can be automatically reordered
- C. To designate whether an item will be automatically reordered
- D. To designate the difference between stocked and special order items

**Answer: A**

**QUESTION NO: 38**

Which domain types can be added?

- A. Synonym, Internal, ALN
- B. Numeric, Crossover, Table
- C. ALN, Crossover, Synonym
- D. Synonym, Table, Crossover

**Answer: B**

**QUESTION NO: 39**

A customer has a requirement to automatically create a work order from a service request when the customer service manager approves the request using Workflow. Which object does this action apply to?

- A. SR
- B. Ticket
- C. Workflow
- D. Workorder

**Answer: A**

**QUESTION NO: 38**

A work order is generated from a route and each stop on the route has a unique job plan and safety plan. Which option should be selected for: When this Route is Applied to a Work Order, the Route Stops will Become?

- A. Child Work Orders
- B. Work Order Tasks
- C. Sequenced Job Plans
- D. Entries in the Work Order's Multi Asset, Location, and CI Table

**Answer: A**

**QUESTION NO: 41**

When adding an item to a storeroom, which two fields must be entered? (Choose two.)

- A. Unit Cost
- B. Issue Unit
- C. Order Unit
- D. Current Balance
- E. Issue Cost Type

**Answer: B,E**

**QUESTION NO: 42**

Where are IBM Maximo Asset Management V7.5 properties changed?

- A. Logging.properties file
- B. Mxserver.properties file
- C. System Properties application
- D. Application Properties application

**Answer: C**

**QUESTION NO: 43**



Which structure can be applied when creating a rotating asset record?

- A. Material structures
- B. Child Asset structures
- C. Asset Details structures
- D. Item Assembly structures

**Answer: D**

**QUESTION NO: 44**

Which statement is true regarding the master Preventive Maintenance (PM) record?

- A. A master PM record is generated by the Meters application.
- B. A master PM record is generated by the Assets application.
- C. A master PM record generates work orders like any other PM.
- D. Associations between existing PM records and a master PM record can be made.

**Answer: D**

**QUESTION NO: 45**

Which statement describes the function of the Select Items for Return button?

- A. to return excess inventory items to another storeroom bin
- B. to return inventory items to a storeroom found in the workshop
- C. to return issued but unused inventory items to another storeroom
- D. to return issued but unused inventory items to the original storeroom

**Answer: D**

**QUESTION NO: 46**

Which fields are required when defining a Continuous meter?

- A. Meter Type and Domain
- B. Domain and Unit of Measure
- C. Meter Type and Reading Type
- D. Reading Type and Unit of Measure

**Answer: C**

**QUESTION NO: 47**

Which IBM Maximo Asset Management V7.5 application builds and displays failure hierarchies?

- A. Failure Class
- B. Failure Codes
- C. Failure Reporting
- D. Failure Structures

**Answer: B**

**QUESTION NO: 48**

In the Work Order Information section of the Preventive Maintenance application which field is mandatory?

- A. Priority
- B. Location
- C. Workgroup
- D. Work Order Status

**Answer: D**

**QUESTION NO: 49**

Which two items are required to approve a purchase contract? (Choose two.)

- A. A vendor
- B. An authorized site
- C. A total cost greater than zero
- D. At least one contract line item
- E. Association to at least one commodity code

**Answer: A,B**

**QUESTION NO: 50**

A shipment must be created to move items between storerooms using the Inventory Usage application. What Usage Type can the Inventory Usage record be in order to perform shipping?

- A. ISSUE
- B. RETURN
- C. SHIPPING
- D. TRANSFER

**Answer: D**

**QUESTION NO: 51**

What is a valid report option in the Labor Reporting application for external contractors or internal employees?

- A. Reporting labor by site
- B. Reporting labor by contract
- C. Reporting labor by work order
- D. Reporting labor by organization

**Answer: C**

**QUESTION NO: 52**

Where are Work Orders created?

To Read the [Whole Q&As](#), please purchase the [Complete Version](#) from [Our website](#).

# Trying our product !

- ★ **100%** Guaranteed Success
- ★ **100%** Money Back Guarantee
- ★ **365 Days** Free Update
- ★ **Instant Download** After Purchase
- ★ **24x7** Customer Support
- ★ Average **99.9%** Success Rate
- ★ More than **69,000** Satisfied Customers Worldwide
- ★ Multi-Platform capabilities - **Windows, Mac, Android, iPhone, iPod, iPad, Kindle**

## Need Help

Please provide as much detail as possible so we can best assist you.

To update a previously submitted ticket:



 <b>One Year Free Update</b> <p>Free update is available within One Year after your purchase. After One Year, you will get 50% discounts for updating. And we are proud to boast a 24/7 efficient Customer Support system via Email.</p>	 <b>Money Back Guarantee</b> <p>To ensure that you are spending on quality products, we provide 100% money back guarantee for 30 days from the date of purchase.</p>	 <b>Security &amp; Privacy</b> <p>We respect customer privacy. We use McAfee's security service to provide you with utmost security for your personal information &amp; peace of mind.</p>
---	---	--

## Guarantee & Policy | Privacy & Policy | Terms & Conditions

Any charges made through this site will appear as Global Simulators Limited.

All trademarks are the property of their respective owners.