

Exam : **000-275**

Title : Blueworks Live IBM
Business Process Manager
Express or Standard Edition,
V8. 0 BPM Analysis

Version : Demo

1. A new employee just started working with a company and only received their laptop in week 4.

The BPM analyst investigated the cause:

- Equipment was not ordered until week 2
- The manager did not complete the new hire checklist.
- The manager did not know how to access the checklist.
- No one communicated to the manager how to access the checklist.
- No communication plan for the on-boarding process.
- The root cause of the initial problem was that no one communicated to the manager there was a checklist.

Which tool did the BPM analyst use in order to find out the root cause?

- A. 5 Whys
- B. 5 Whats
- C. 5 Whens
- D. 5 Whos

Answer: A

2. On a project, the BPM analyst defined the following to identify the Key Performance Indicator (KPI):

- The goal of the project was to improve the efficiency of the process.
- The concern was that the process was not fast enough.
- The Critical to Quality (CTQ) was the speed of the process.
- The client was interested in the cycle time of the process.
- The time stamps at the beginning and at the end of the process are captured.

Which step did the BPM analyst fail to perform in identifying the KPI?

- A. Know the client objectives
- B. Know how to define the client's KPI
- C. Know the process decision makers
- D. Know the client's Service Level Agreements (SLAs)

Answer: C

3. A BPM analyst is modeling the process for acquiring membership at a club. The analyst interviewed the front office supervisor, who provided the following description of the first activity "Enter Application":

"One of our receptionists receives a paper application from the potential client, an applicant. The receptionist first looks up the client's name and address to see if it exists in our system, then enters the information from the paper application into the system, and assigns a membership number to the application. When the application entry is complete, the receptionist sends it to the manager for an initial review. "

The BPM analyst has created the discovery map in Blueworks Live and now needs to enter information from the above description into the Details fields for the activity "Enter Application".

For the activity "Enter Application", what are the Inputs and Outputs?

- A. *Inputs:*
Application Form
Outputs:
Application
Membership Number
- B. *Inputs:*
Membership Number
Outputs:
Application
Membership Number
- C. *Inputs:*
Membership Number
Outputs:
Application
Membership Number
Name
Address
- D. *Inputs:*
Application Form
Membership Number
Name
Address
Outputs:
Application
Membership Number
Name
Address

- A. Option A
- B. Option B
- C. Option C
- D. Option D

Answer: A

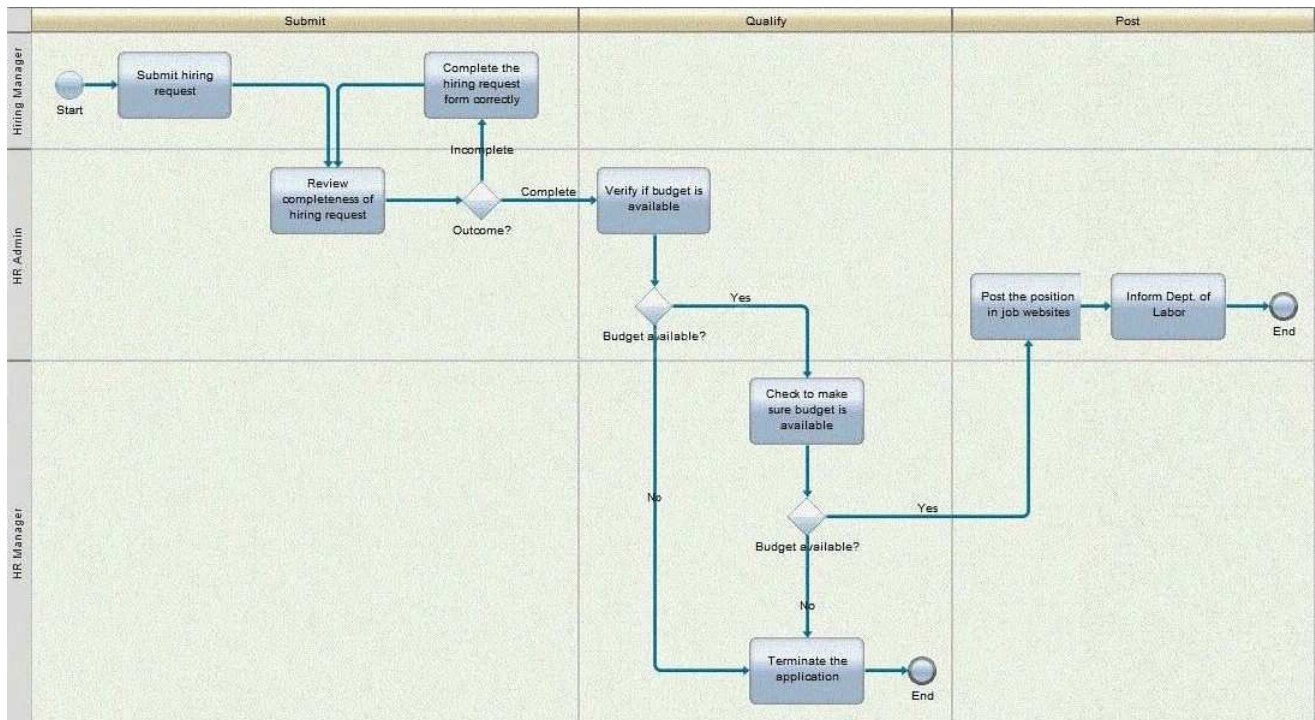
4.A BPM analyst is conducting interviews with the participants of a business process.

What feedback about the process should the BPM analyst look out for that might not be obvious in an as-is process diagram?

- A. Excessive reviews
- B. Too many participants
- C. Identification of bottlenecks
- D. Not enough system automation

Answer: C

5.A company needs to improve their Hiring Process and hired a BPM analyst to analyze their current process. The analyst completed documenting the current state process of submitting the hiring request (refer to the process diagram below) and did a "Value-Add" Analysis with the process stakeholders.



Identify the "Non-Value Add" activities in this process.

- A. "Inform Dept. of Labor" & "Terminate the application"
- B. "Inform Dept. of Labor" & "Check to make sure budget is available"
- C. "Complete the hiring request form correctly" & "Terminate the application"
- D. "Complete the hiring request form correctly" & "Check to make sure budget is available"

Answer: D

6. A BPM analyst is modeling the process for acquiring membership at a club. The BPM analyst interviewed the front office supervisor, who provided the following description of the first activity "Enter Application": "One of our receptionists receives a paper application from a potential client, an applicant. The receptionist first looks up the client's name and address to see if it exists in our system, then enters the information from the paper application into the system, and assigns a membership number to the application. When the application entry is complete, the receptionist sends it to the manager for an initial review. "The BPM analyst has created the discovery map and now needs to enter information from the above description into the Details fields in Blueworks Live for the activity "Enter Application".

For the activity "Enter Application", who is the Supplier?

- A. Manager
- B. Applicant
- C. Receptionist
- D. Front Office Supervisor

Answer: B

7. A BPM analyst is helping to identify and select the appropriate solution for process improvement in a large BPM project.

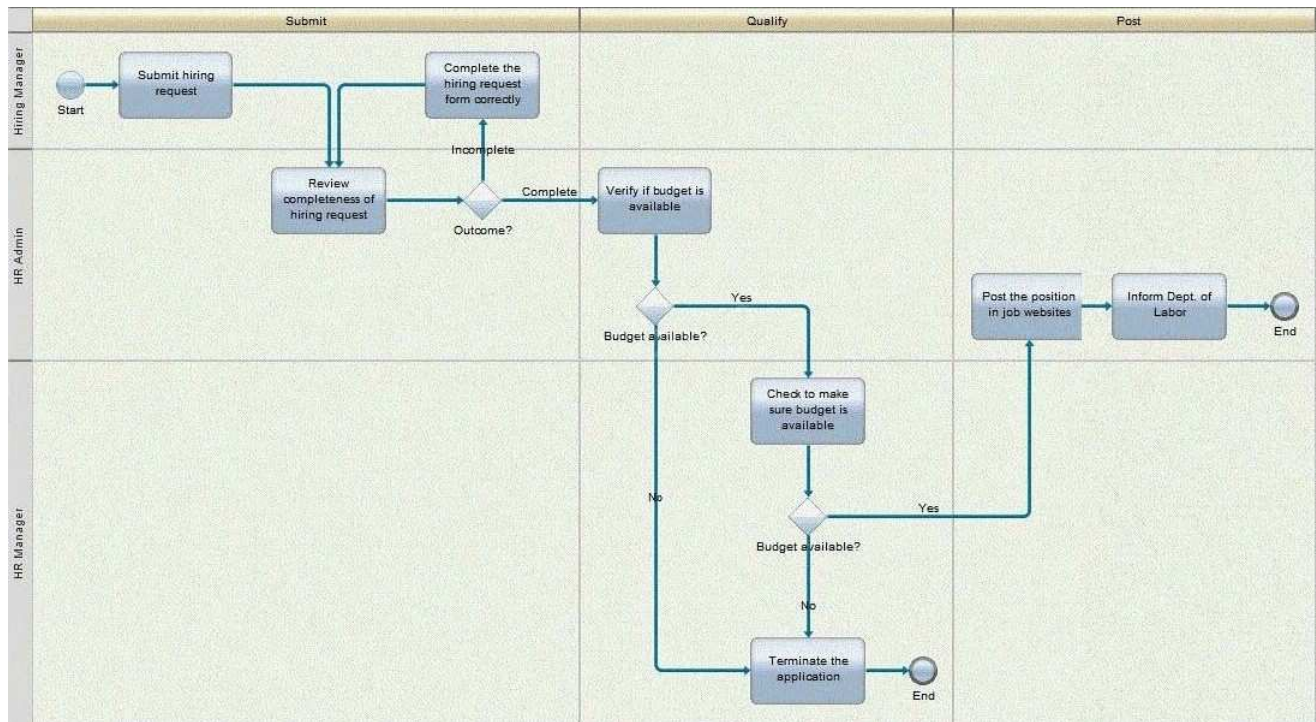
What are the business levers the BPM analyst should focus on?

- A. Policy, Technology, Organization and People

- B. Policy, Data, Organization and People
- C. Process, Technology, Organization and People
- D. Process, Data, Organization and People

Answer: C

8. A company needs to improve their hiring process and hired a BPM analyst to analyze their current process. The analyst completed documenting the current state process of submitting the hiring request (refer to the process diagram below) and did a "Value-Add" analysis with the process stakeholders.



Identify the "Business Value Add" activities in this process.

- A. "Inform Dept. of Labor"
- B. "Terminate the application"
- C. "Post the position in job websites"
- D. "Complete the hiring request form correctly"

Answer: A

9. A company that processes applications has been using IBM Business Process Manager V8.0 over the last year. The company has asked IBM to analyze its processes in production because it wants to continue improving its processes. The IBM BPM team sends a BPM analyst.

What should the BPM analyst do?

- A. Use the Discovery View in Blueworks Live to perform inspection on the process.
- B. Use the Analyze feature in Blueworks Live to perform Historical and Simulation Analysis.
- C. Use the Optimizer in IBM Business Process Manager V8.0 to perform Historical and Simulation Analysis.
- D. Use the Process Inspector in IBM Business Process Manager V8.0 to perform inspection on the process.

Answer: C

10. A BPM analyst is documenting process problems during a discovery session.

As a problem is raised, what are the two key factors the BPM analyst needs to capture about each problem to be able to prioritize them later?

A. The solution to the problem.

B. When the problem first occurred and how often it occurred in each milestone.

C. Severity and frequency of the problem at the process, milestone, or activity level.

D. Who is the participant when the problem occurs and what other tasks does that participant complete.

Answer: C

www.Pass4itSure.com

Trying our product !

- ★ **100%** Guaranteed Success
- ★ **100%** Money Back Guarantee
- ★ **365 Days** Free Update
- ★ **Instant Download** After Purchase
- ★ **24x7** Customer Support
- ★ Average **99.9%** Success Rate
- ★ More than **69,000** Satisfied Customers Worldwide
- ★ Multi-Platform capabilities - **Windows, Mac, Android, iPhone, iPod, iPad, Kindle**

Need Help

Please provide as much detail as possible so we can best assist you.

To update a previously submitted ticket:



Submit A Ticket

One Year Free Update



Free update is available within One Year after your purchase. After One Year, you will get 50% discounts for updating. And we are proud to boast a 24/7 efficient Customer Support system via Email.



Money Back Guarantee

To ensure that you are spending on quality products, we provide 100% money back guarantee for 30 days from the date of purchase.



Security & Privacy

We respect customer privacy. We use McAfee's security service to provide you with utmost security for your personal information & peace of mind.

Guarantee & Policy | Privacy & Policy | Terms & Conditions

Any charges made through this site will appear as Global Simulators Limited.

All trademarks are the property of their respective owners.

Copyright © 2004-2014, All Rights Reserved.