



VCS-274^{Q&As}

Administration of Veritas NetBackup 7.7

Pass Veritas VCS-274 Exam with 100% Guarantee

Free Download Real Questions & Answers **PDF** and **VCE** file from:

<https://www.pass4itsure.com/vcs-274.html>

100% Passing Guarantee
100% Money Back Assurance

Following Questions and Answers are all new published by Veritas
Official Exam Center

-  **Instant Download** After Purchase
-  **100% Money Back** Guarantee
-  **365 Days** Free Update
-  **800,000+** Satisfied Customers



**QUESTION 1**

Which schedule can be configured as a synthetic backup in addition to the full backup schedule type?

- A. differential incremental backup
- B. cumulative incremental backup
- C. user backup
- D. application backup
- E. automatic backup

Correct Answer: B

QUESTION 2

An administrator took Media Server, mediaA, offline for maintenance and set up a new Media Server, mediaB, with access to the previously backed up data. When restores are performed for data that was backed up by mediaA, the restores fail.

Which setting in the Host Properties must the administrator modify to allow successful restores?

- A. From the Master Server, run the bpimage command to change the name of the Media Server from mediaA to mediaB.
- B. Verify both Media Servers are set up in the Media Server Host Properties > Restore Failover section.
- C. In the BAR GUI, change the "Server to use for backup and restores" setting to MediaB.
- D. Verify both Media Servers are set up in the Master Server Host Properties > Restore Failover section.

Correct Answer: D

QUESTION 3

What is required to implement Auto Image Replication?

- A. BasicDisk or AdvancedDisk storage units and at least one Master Server
- B. OST-compliant appliances or MSDP and at least one Master Server
- C. OST-compliant appliances or MSDP and at least two Master Servers
- D. BasicDisk or AdvancedDisk storage units and at least two Master Servers

Correct Answer: C



QUESTION 4

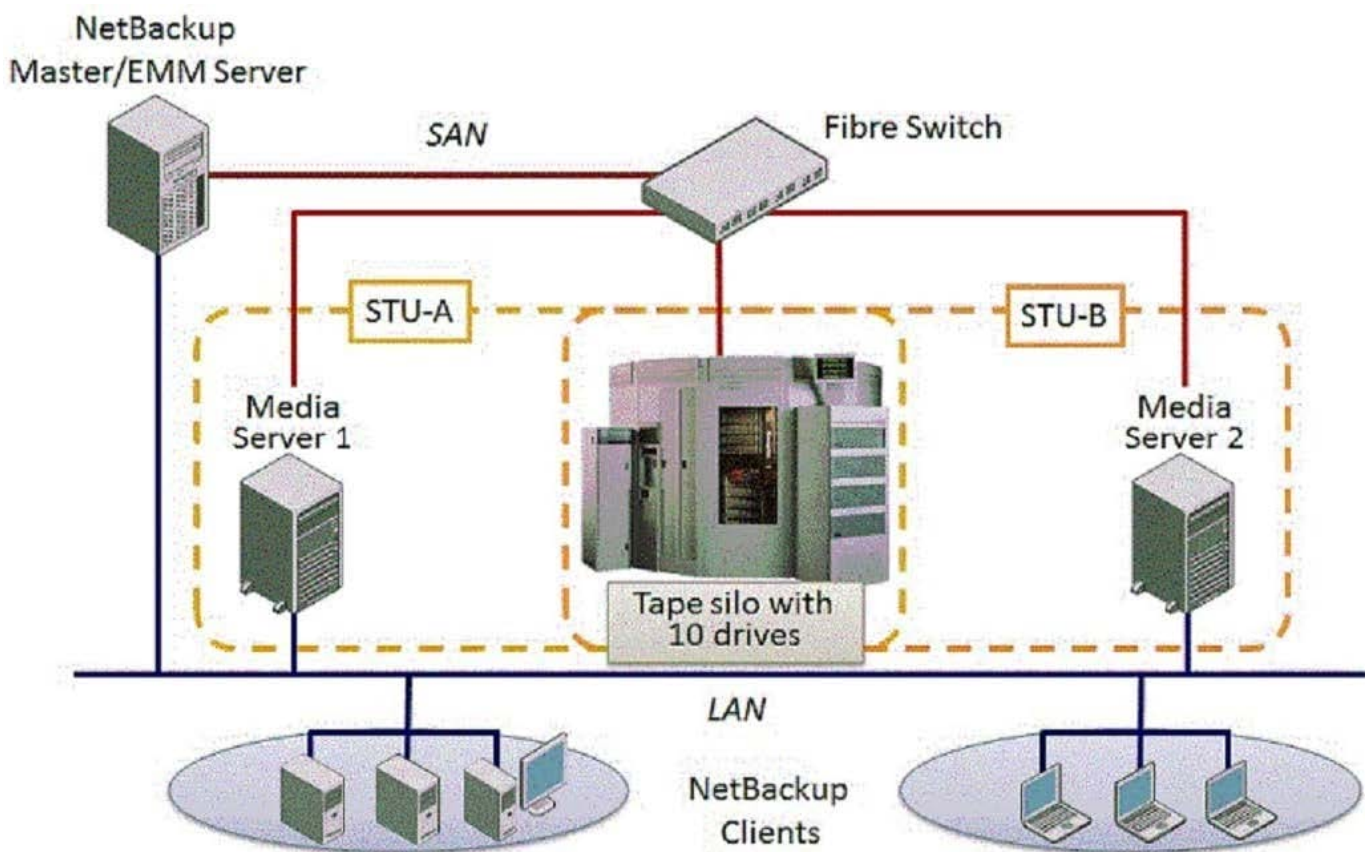
Which event can cause a NetBackup appliance to shut down?

- A. multiple disk failures that put data at risk
- B. fan failure
- C. RAID battery backup failure
- D. power supply input voltage overload

Correct Answer: D

QUESTION 5

Refer to the exhibit.



Two media servers, sharing a library with 10 tape drives, exist in the NetBackup 7.7 environment displayed in the exhibit. Both weekly full and daily differential incremental backups need to run for the clients and each schedule has a different retention period. Because of network topology, some clients back up to Media Server 1 and some back up to Media Server 2. The environment suffers from multiple status failures during the backup window. How can the administrator minimize the number of failures?

- A. increase the Media unmount delay



- B. configure media multiplexing
- C. enable backups to span tape media
- D. enable media sharing

Correct Answer: D

[VCS-274 Practice Test](#)

[VCS-274 Study Guide](#)

[VCS-274 Braindumps](#)