



VCPC610^{Q&As}

VMware Certified Professional 6 - Cloud

Pass VMware VCPC610 Exam with 100% Guarantee

Free Download Real Questions & Answers **PDF** and **VCE** file from:

<https://www.pass4itsure.com/vcpc610.html>

100% Passing Guarantee
100% Money Back Assurance

Following Questions and Answers are all new published by VMware
Official Exam Center

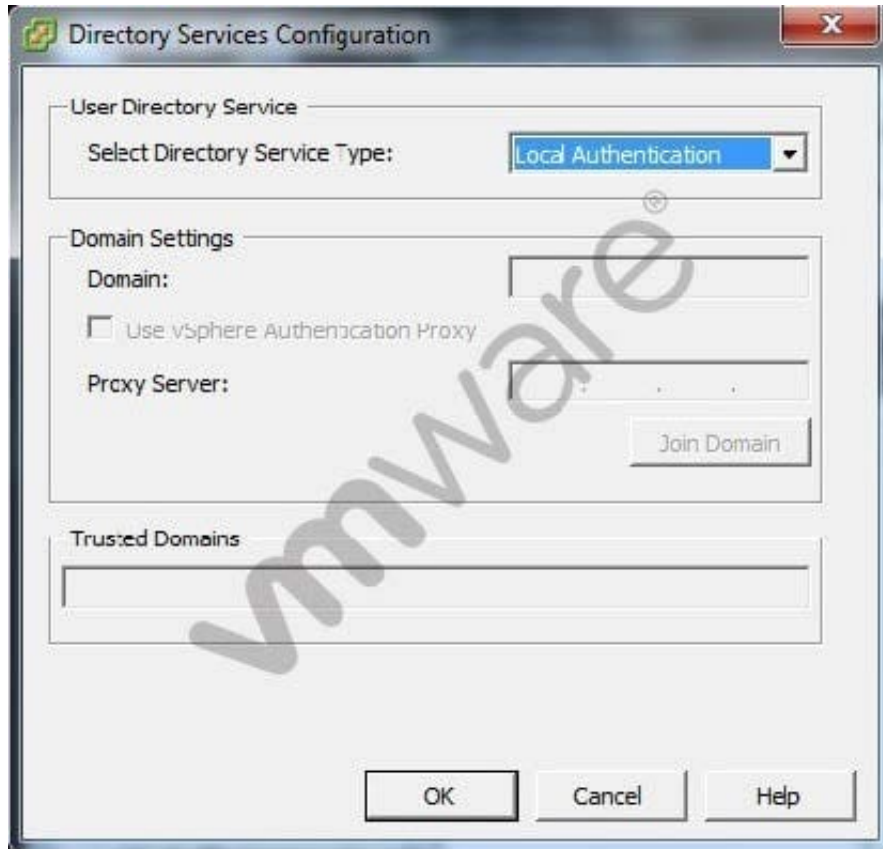
- ⚙ **Instant Download** After Purchase
- ⚙ **100% Money Back** Guarantee
- ⚙ **365 Days** Free Update
- ⚙ **800,000+** Satisfied Customers





QUESTION 1

Refer to the Exhibit.



The vSphere administrator is configuring directory services for a host, as shown in the exhibit:



What should the vSphere administrator do to configure the host to use CAM services?



- A. Check the Use vSphere Authentication Proxy checkbox.
- B. Set Select Directory Service Type to "CAM services".
- C. Specify "CAM\$" for the Domain.
- D. Set Trusted Domains to "cam\name.tld" where name.tld is the domain that the host is joining.

Correct Answer: A

QUESTION 2

As part of a capacity planning exercise, a user needs a report of all reservations for all Business Groups within the user's department including the percentage used for machine quota, memory, and storage for powered-on virtual machines.

How should the user collect the data for this report?

- A. As a fabric administrator, select the columns needed in the Reservation work area and export the data in a convenient form.
- B. Request that each Business Group Manager provide the Reservation data for the user's department and combine the results.
- C. Request that the database administrator pull the data needed from the appropriate database view exporting in CSV format.
- D. As a fabric administrator, run the Reservation Summary Report from the Reports section in vCloud Automation Center.

Correct Answer: A

QUESTION 3

An administrator has created a Virtual Flash Read Cache and needs to add a total 2TB of capacity to the cache. The administrator has a total of six SSD disks to add, but is unable to add one of the disks.

What is a likely cause of the problem?

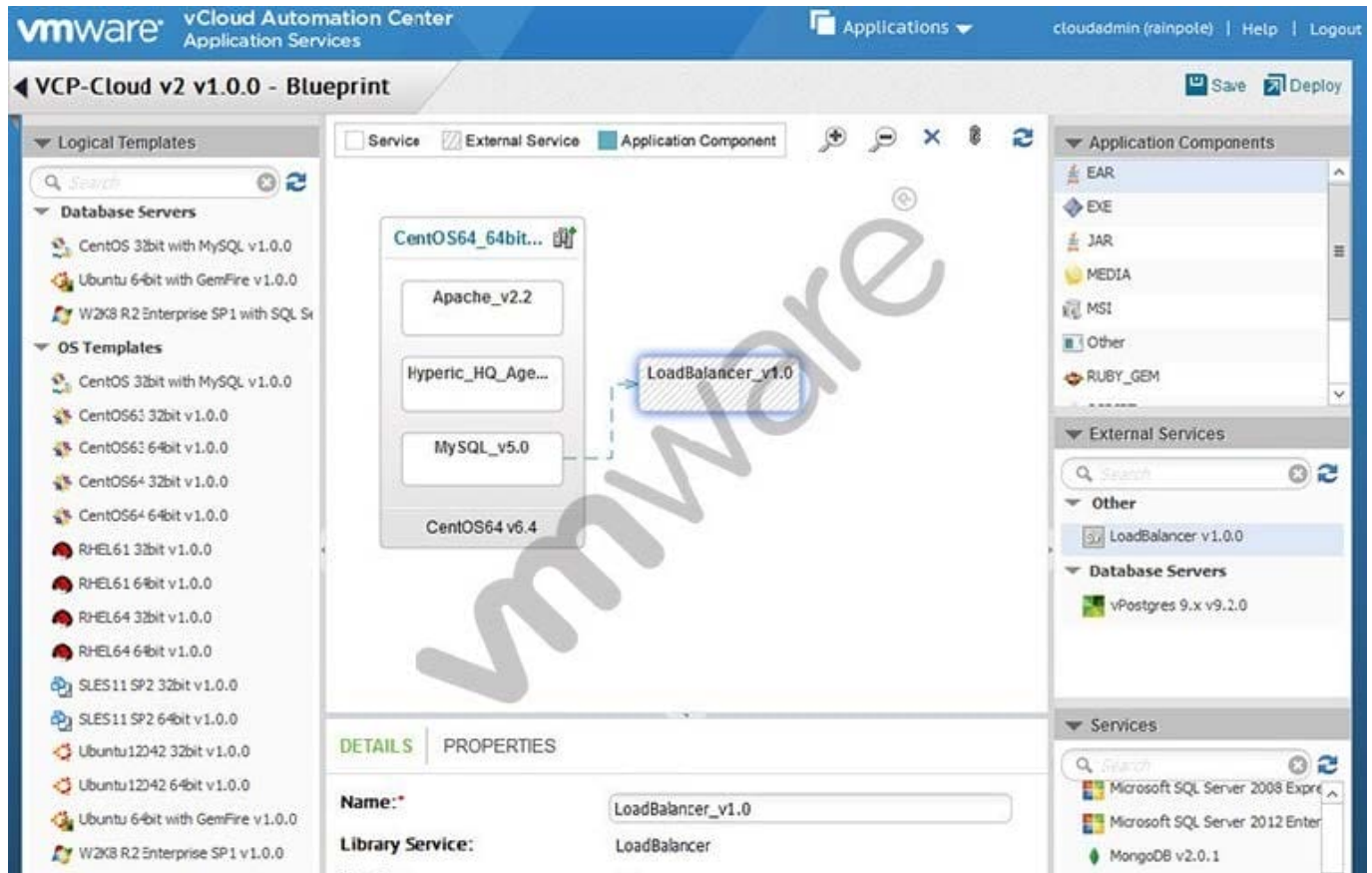
- A. The SSD device size is less than 256GB.
- B. The SSD device size is greater than 4TB.
- C. The SSD device is a local disk.
- D. The SSD device contains existing data.

Correct Answer: B

QUESTION 4



Refer to the exhibit.



During application deployment, the load balancer is not being configured correctly, as shown in the exhibit.

What could be done to resolve the issue?

- A. Change the direction of the dependency.
- B. Remove the dependency.
- C. Add an External Service component to configure the load balancer.
- D. Move the dependency to the Hyperic Agent.

Correct Answer: A

QUESTION 5

An administrator is using vSphere Replication to replicate a number of virtual machines to a recovery site. The administrator plans on enabling Storage DRS on the production site, which is running vSphere 5.5.

What changes must be made in order to support this configuration?

- A. Storage DRS can be added to the existing configuration without any configuration changes
- B. Disable Storage DRS on the virtual machines utilizing vSphere Replication



C. Change the Recovery Point Objective for the replicated virtual machines to support the additional synchronization time

D. Storage DRS cannot be used in conjunction with vSphere Replication

Correct Answer: A

[VCPC610 VCE Dumps](#)

[VCPC610 Practice Test](#)

[VCPC610 Braindumps](#)