



# VCP-510<sup>Q&As</sup>

VMware Certified Professional on VSphere 5

## Pass VMware VCP-510 Exam with 100% Guarantee

Free Download Real Questions & Answers **PDF** and **VCE** file from:

<https://www.pass4itsure.com/vcp-510.html>

100% Passing Guarantee  
100% Money Back Assurance

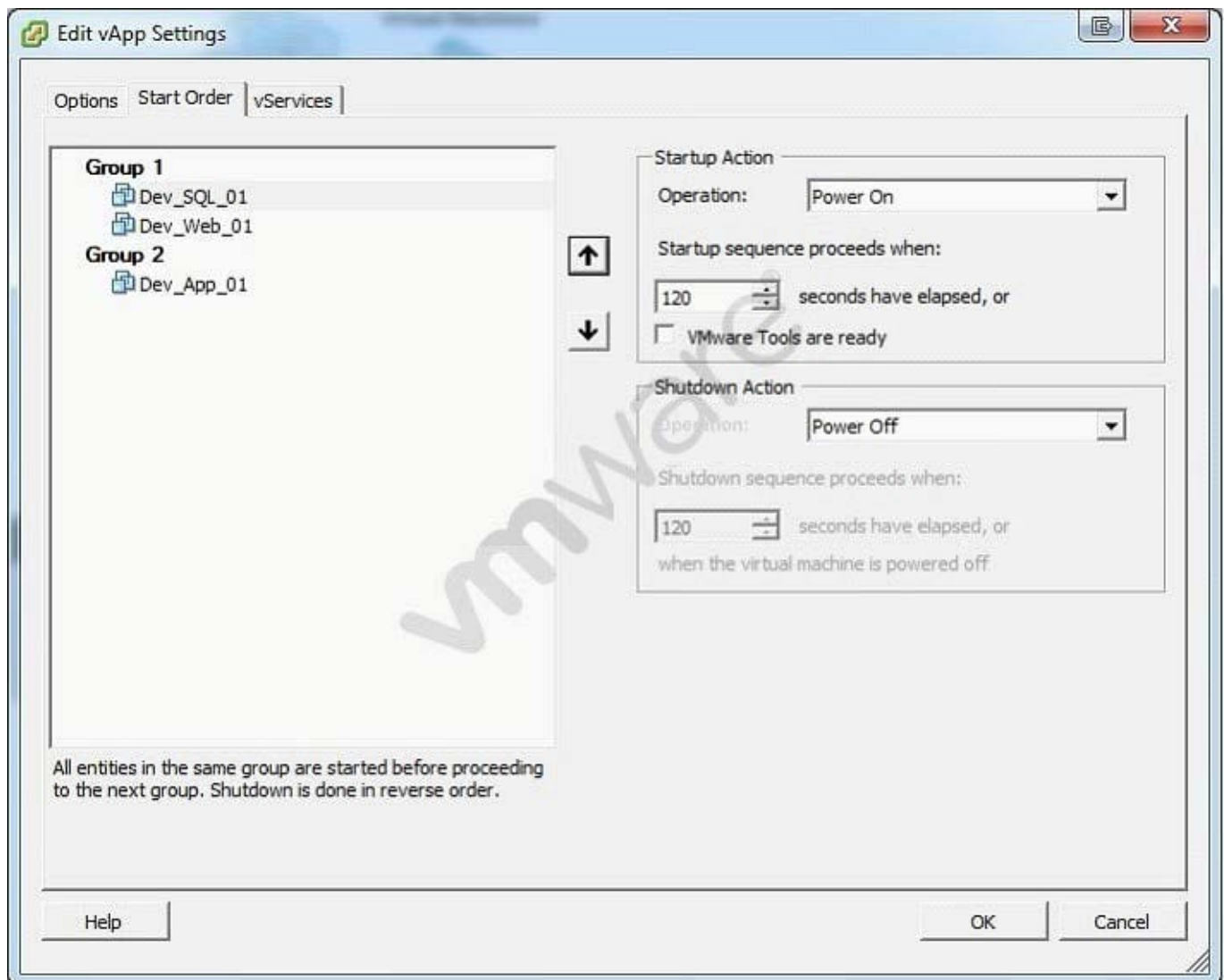
Following Questions and Answers are all new published by VMware  
Official Exam Center

- ⚙ **Instant Download** After Purchase
- ⚙ **100% Money Back** Guarantee
- ⚙ **365 Days** Free Update
- ⚙ **800,000+** Satisfied Customers



**QUESTION 1**

Click the Exhibit button. An administrator is creating a vApp for a multi-tiered web application. The vApp has been configured as shown in the exhibit. Testing of the vApp indicates that attempts to communicate with the web server on Dev\_Web\_01 fail. The developer wants to be sure the database server OS is completely started before the other servers power on. The developer also wants to minimize recovery time. What changes to the vApp configuration will correct the issues?



- A. Move the Dev\_Web\_01 virtual machine to Group 3 and increase the time value
- B. Move the Dev\_App\_01 virtual machine to Group 1 and increase the time value
- C. Move the Dev\_Web\_01 virtual machine to Group 3, decrease the time value and check VMware Tools are ready
- D. Move the Dev\_Web\_01 virtual machine to Group 3, increase the time value and check VMware Tools are ready

Correct Answer: D

**QUESTION 2**

An administrator is configuring an ESXi 5.x host with two dual-port Fibre Channel (FC) HBAs. The FC storage array has four active storage processor ports. Zoning is configured on both fabrics, with ESXi HBA ports and the array ports in the same zone. There are two LUNs with VMFS datastores configured. Using Round Robin multipathing, what is the maximum number of paths that can be used to send data to the VMFS datastores at any given time?

- A. 2
- B. 3
- C. 1
- D. 4

Correct Answer: A

---

**QUESTION 3**

A vSphere Standard Switch has been configured for IP-based load balancing using two uplinks. A new uplink is added to the vSwitch. What is the status of the uplink by default?

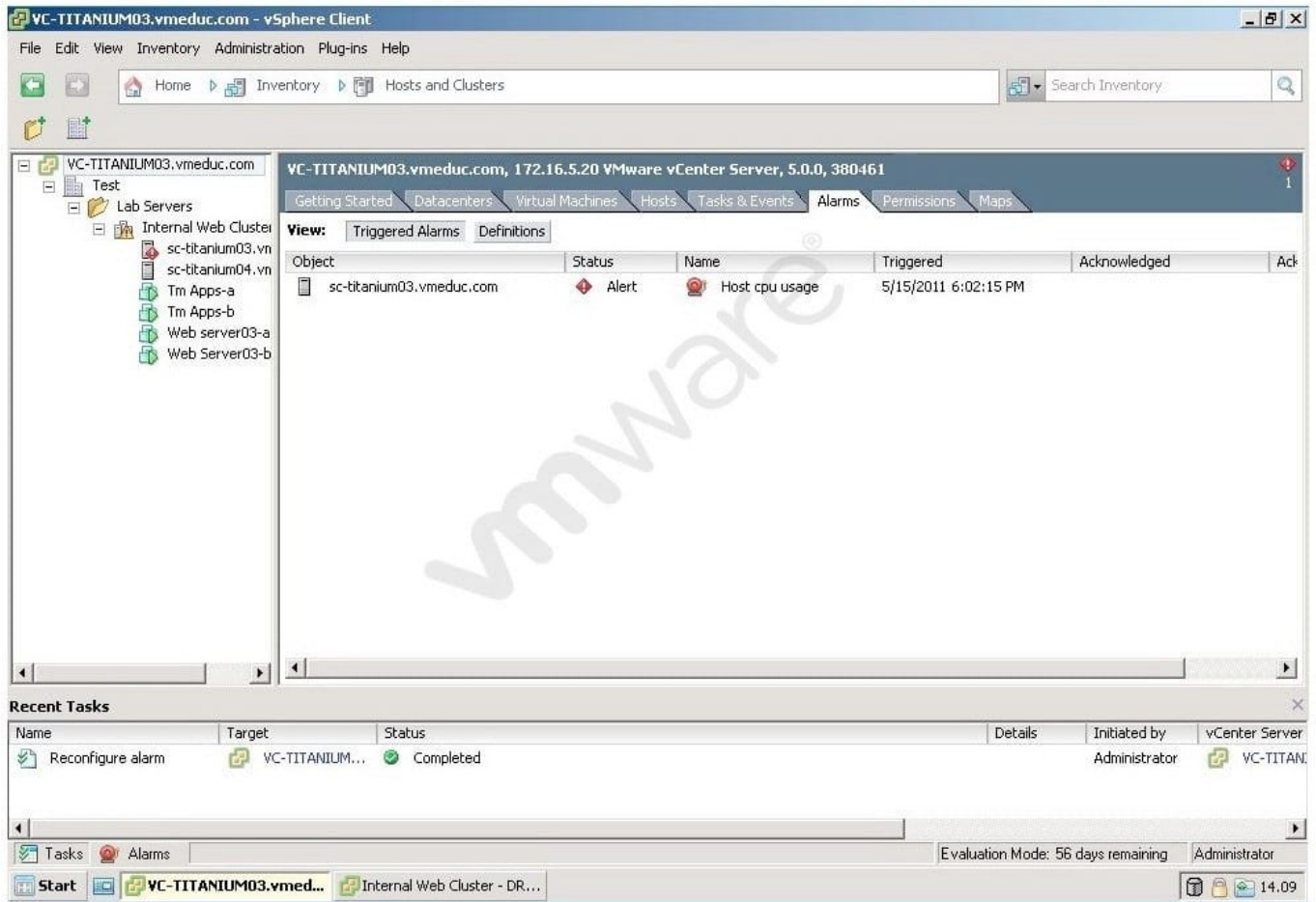
- A. The uplink is placed in standby mode until it is added to the active NIC team.
- B. The uplink is marked as active but does not participate in the active NIC team until assigned to a port group.
- C. The uplink is marked as active, but cannot be used by the active NIC team until it is added to the existing 802.3ad group on the physical switch.
- D. The uplink is marked as unused until it is added to the active NIC team.

Correct Answer: C

---

**QUESTION 4**

Click the Exhibit button. Users are having difficulty accessing a Web server since a new Web application was configured in a virtual machine running on sc-titanium03.vmeduc.com. The web server has been assigned 1 vCPU. The vSphere Client reports the error shown in the exhibit. DRS is set to fully automated mode, but the problem has not resolved. Which action can resolve the issue?



- A. Set a CPU reservation for the web server VM.
- B. Manually move the Virtual Machine using high priority vMotion.
- C. Configure the DRS Migration Threshold to Aggressive.
- D. Set CPU affinity for the virtual machine.

Correct Answer: A

## QUESTION 5

What are two reasons creating a host profile could fail? (Choose two.)

- A. Selecting a VMware Infrastructure 3.5 host
- B. The host selected is currently in maintenance mode
- C. Special characters were used when naming vSphere objects
- D. Evaluation Licenses are being used

Correct Answer: AC



VCE & PDF

Pass4itSure.com

<https://www.pass4itsure.com/vcp-510.html>

2024 Latest pass4itsure VCP-510 PDF and VCE dumps Download

---

[VCP-510 PDF Dumps](#)

[VCP-510 Study Guide](#)

[VCP-510 Braindumps](#)