



# UIPATH-ARDV1<sup>Q&As</sup>

UiPath Advanced RPA Developer v1.0 Exam (UiARD)

## Pass UiPath UIPATH-ARDV1 Exam with 100% Guarantee

Free Download Real Questions & Answers **PDF** and **VCE** file from:

<https://www.pass4itsure.com/uipath-ardv1.html>

100% Passing Guarantee  
100% Money Back Assurance

Following Questions and Answers are all new published by UiPath Official Exam Center

-  **Instant Download** After Purchase
-  **100% Money Back** Guarantee
-  **365 Days** Free Update
-  **800,000+** Satisfied Customers





### QUESTION 1

A developer has a datatable "dt\_Companies" containing data for numerous companies. In the datatable, "RevenueSize" is a numeric column representing the current revenue in USD and "YearFounded" is a numeric column representing the year the company was founded. The developer needs to filter the datatable to obtain only companies that were founded after the year 2010 and also have revenues less than 500,000 USD.

What represents the configuration of the Filter Wizard of the Filter Data Table activity to obtain the output into the datatable, "dt\_FilterCompanies"?



A.

Filter Wizard

Input DataTable: dt\_Companies      Output DataTable: dt\_FilterCompanies

Filter Rows    Output Columns

Rows Filtering Mode

Keep     Remove

	Column	Operation	Value		
	"RevenueSize"	>	500000	x	+
Or	"YearFounded"	<	2010	x	+

OK    Cancel

B.

Filter Wizard

Input DataTable: dt\_Companies      Output DataTable: dt\_FilterCompanies

Filter Rows    Output Columns

Rows Filtering Mode

Keep     Remove

	Column	Operation	Value		
	"RevenueSize"	<	500000	x	+
Or	"YearFounded"	>=	2010	x	+

OK    Cancel



C.

Filter Wizard

Input DataTable: dt\_Companies      Output DataTable: dt\_FilterCompanies

Filter Rows | Output Columns

Rows Filtering Mode

Keep    Remove

	Column	Operation	Value		
	"RevenueSize"	<	500000	x	+
And	"YearFounded"	>	2010	x	+

OK      Cancel

D.

Filter Wizard

Input DataTable: dt\_Companies      Output DataTable: dt\_FilterCompanies

Filter Rows | Output Columns

Rows Filtering Mode

Keep    Remove

	Column	Operation	Value		
	"RevenueSize"	>	500000	x	+
And	"YearFounded"	>=	2010	x	+

OK      Cancel

A. Option A

B. Option B



C. Option C

D. Option D

Correct Answer: C

---

### QUESTION 2

Which of the following SQL statements can be executed by using the activity called Execute Non Query?

A. Insert

B. Update

C. Select

D. Delete

Correct Answer: ABD

---

### QUESTION 3

You need to collect employees data and send it by email as an Excel file. What type of workflow is the most suitable for the final part, which adds the file attachment, formats the email, and sends it?

A. Sequence

B. Flowchart

C. State Machine

D. Directed Acyclic Graph (DAG)

Correct Answer: C

---

### QUESTION 4

Which is the best way to navigate to a specific page in a web browser?

A. Use the Type Into activity inside an Attach Browser container

B. Use the Navigate To activity inside an Attach Browser container

C. Use a Type Into activity with a full selector

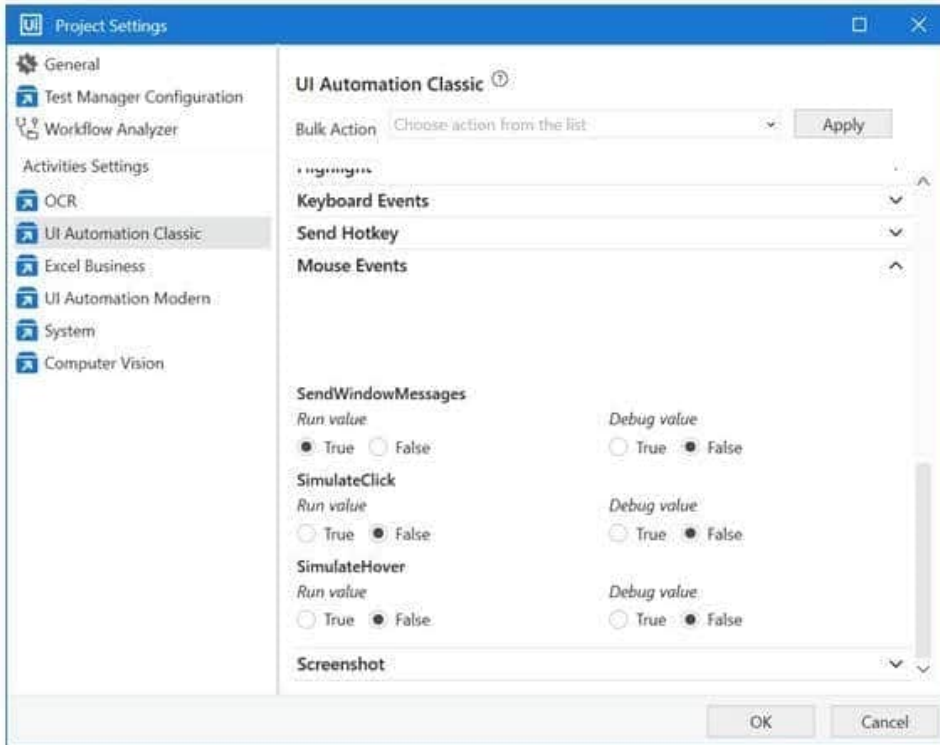
Correct Answer: B

---

### QUESTION 5



A developer has configured the Activity Project Settings for UI automation and a Click activity as shown below. What will be the result of executing the Click activity in Run mode?



UiPath.Core.Activities.Click

**Common**

ContinueOnError	Specifies to cont	<input checked="" type="checkbox"/>	...
DelayAfter	Delay time (in millis		...
DelayBefore	Delay time (in millis		...
DisplayName	Click 'Search'		

**Input**

ClickType	ClickType.CLICK		...
MouseButton	MouseButton.B		...

**Target**

Target

**Misc**

Private		<input type="checkbox"/>	
---------	--	--------------------------	--

**Options**

AlterIfDisabled	If selected, the s	<input checked="" type="checkbox"/>	...
CursorMotionType	Specifies the typ		...

**CursorPosition**

KeyModifiers	KeyModifiers.N		...
SendWindowMessages	If selected, the c	<input checked="" type="checkbox"/>	...
SimulateClick	True	<input checked="" type="checkbox"/>	...



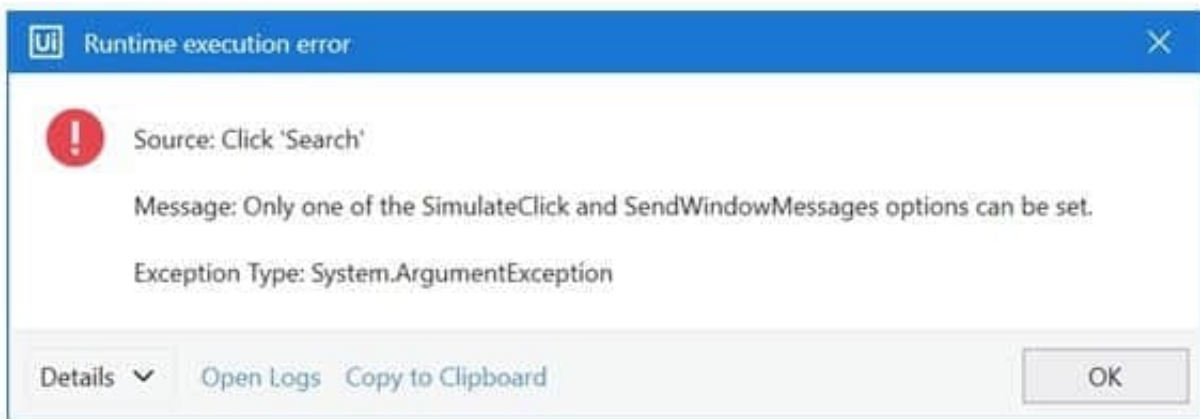
- A. Click activity will be executed by the default hardware method.
- B. Click activity will be executed using SimulateClick method.
- C. Click activity will be executed using SendWindowMessages method.
- D. An error will be thrown.

Correct Answer: D

Settings changed in Project Settings take effect if the corresponding property is left blank in the activity.

However, please note that SendWindowMessages and SimulateType are mutually exclusive and selecting them both throws an error at Runtime. So in this scenario, SendWindowMessages is set to True in Project Settings, and SimulateType

is set to True directly in the Click activity. Such contradiction will result in an error.



[UIPATH-ARDV1 Practice Test](#)

[UIPATH-ARDV1 Study Guide](#)

[UIPATH-ARDV1 Exam Questions](#)