



SC-300^{Q&As}

Microsoft Identity and Access Administrator

Pass Microsoft SC-300 Exam with 100% Guarantee

Free Download Real Questions & Answers **PDF** and **VCE** file from:

<https://www.pass4itsure.com/sc-300.html>

100% Passing Guarantee
100% Money Back Assurance

Following Questions and Answers are all new published by Microsoft
Official Exam Center

- ⚙ **Instant Download** After Purchase
- ⚙ **100% Money Back** Guarantee
- ⚙ **365 Days** Free Update
- ⚙ **800,000+** Satisfied Customers





QUESTION 1

You have an Azure Active Directory (Azure AD) tenant named contoso.com.

You need to ensure that Azure AD External Identities pricing is based on monthly active users (MAU).

What should you configure?

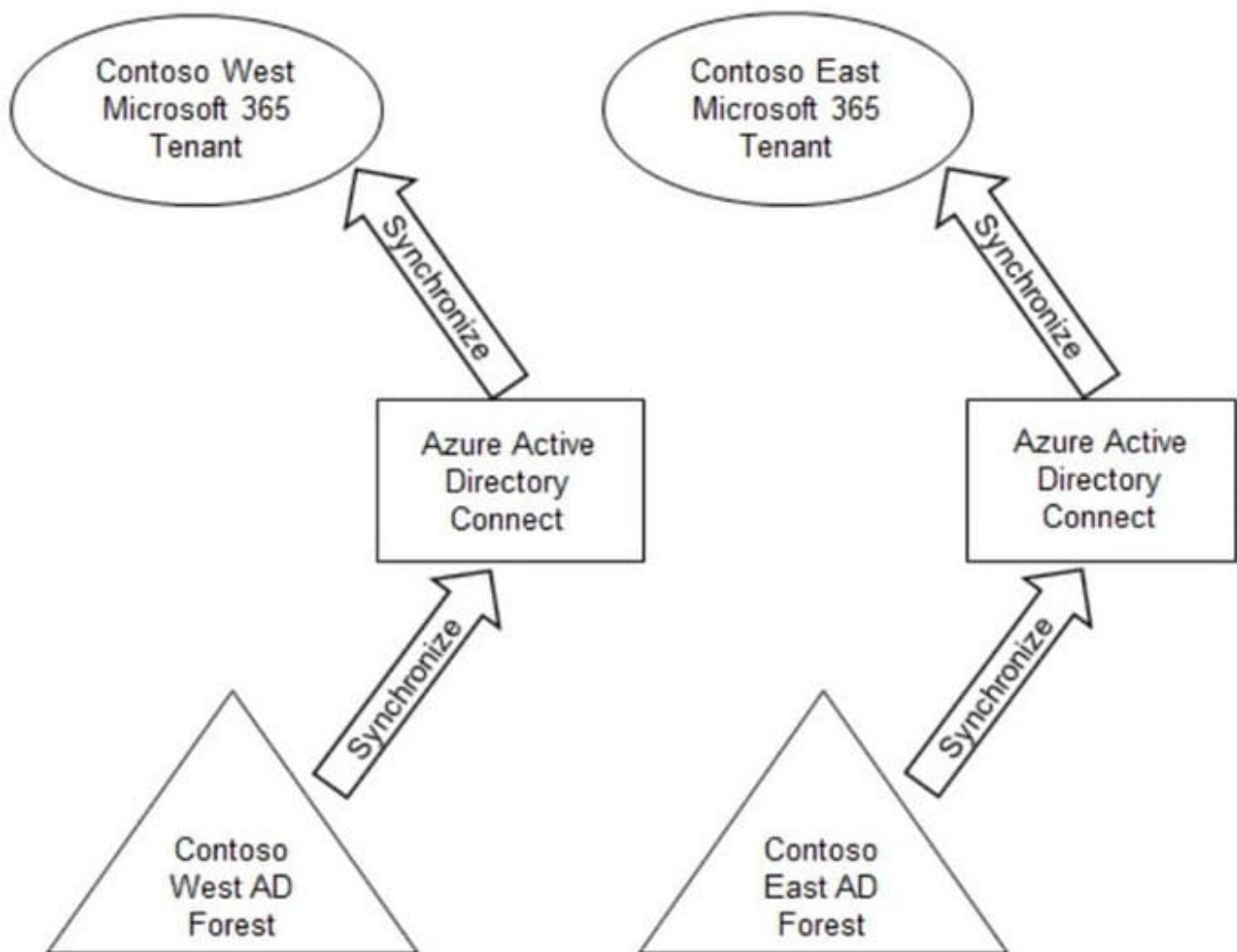
- A. an access review
- B. the terms or use
- C. a linked subscription
- D. a user flow

Correct Answer: C

Reference: <https://docs.microsoft.com/en-us/azure/active-directory/external-identities/external-identities-pricing>

QUESTION 2

Your company has two divisions named Contoso East and Contoso West. The Microsoft 365 identity architecture for both divisions is shown in the following exhibit.



You need to assign users from the Contoso East division access to Microsoft SharePoint Online sites in the Contoso West tenant. The solution must not require additional Microsoft 365 licenses. What should you do?

- A. Configure The exiting Azure AD Connect server in Contoso Cast to sync the Contoso East Active Directory forest to the Contoso West tenant.
- B. Configure Azure AD Application Proxy in the Contoso West tenant.
- C. Deploy a second Azure AD Connect server to Contoso East and configure the server to sync the Contoso East Active Directory forest to the Contoso West tenant.
- D. Create guest accounts for all the Contoso East users in the West tenant.

Correct Answer: D

QUESTION 3

You have a Microsoft 365 E5 subscription that contains a web app named App1.



Guest users are regularly granted access to App1.

You need to ensure that the guest users that have NOT accessed App1 during the past 30 days have their access removed. The solution must minimize administrative effort.

What should you configure?

- A. a Conditional Access policy
- B. a compliance policy
- C. a guest access review
- D. an access review for application access

Correct Answer: D

QUESTION 4

You have a Microsoft 365 tenant.

All users must use the Microsoft Authenticator app for multi-factor authentication (MFA) when accessing Microsoft 365 services.

Some users report that they received an MFA prompt on their Microsoft Authenticator app without initiating a sign-in request.

You need to block the users automatically when they report an MFA request that they did not initiate.

Solution: From the Azure portal, you configure the Fraud alert settings for multi-factor authentication (MFA).

Does this meet the goal?

- A. Yes
- B. No

Correct Answer: A

The fraud alert feature lets users report fraudulent attempts to access their resources. When an unknown and suspicious MFA prompt is received, users can report the fraud attempt using the Microsoft Authenticator app or through their phone.

The following fraud alert configuration options are available:

1.
Automatically block users who report fraud.
2.
Code to report fraud during initial greeting.



Reference: <https://docs.microsoft.com/en-us/azure/active-directory/authentication/howto-mfa-mfasettings>

QUESTION 5

You have a Microsoft 365 tenant.

All users have mobile phones and laptops.

The users frequently work from remote locations that do not have Wi-Fi access or mobile phone connectivity.

While working from the remote locations, the users connect their laptop to a wired network that has internet access.

You plan to implement multi-factor authentication (MFA).

Which MFA authentication method can the users use from the remote location?

- A. a notification through the Microsoft Authenticator app
- B. email
- C. security questions
- D. a verification code from the Microsoft Authenticator app

Correct Answer: D

[Latest SC-300 Dumps](#)

[SC-300 Practice Test](#)

[SC-300 Braindumps](#)