



SC-300^{Q&As}

Microsoft Identity and Access Administrator

Pass Microsoft SC-300 Exam with 100% Guarantee

Free Download Real Questions & Answers **PDF** and **VCE** file from:

<https://www.pass4itsure.com/sc-300.html>

100% Passing Guarantee
100% Money Back Assurance

Following Questions and Answers are all new published by Microsoft
Official Exam Center

-  **Instant Download** After Purchase
-  **100% Money Back** Guarantee
-  **365 Days** Free Update
-  **800,000+** Satisfied Customers





QUESTION 1

You implement the planned changes for SSPR.

What occurs when User3 attempts to use SSPR? To answer, select the appropriate options in the answer area.

NOTE: Each correct selection is worth one point.

Hot Area:

Answer Area

Number of authentication methods required:

Authentication methods that can be used:

Correct Answer:

Answer Area

Number of authentication methods required:

Authentication methods that can be used:

QUESTION 2

You need to meet the planned changes for the User administrator role. What should you do?

- A. Create an access review.
- B. Create an administrative unit.
- C. Modify Active assignments.
- D. Modify Role settings.

Correct Answer: D

Role Setting details is where you need to be: Role setting details - User Administrator Privileged Identity Management | Azure AD roles Default Setting State Require justification on activation Yes Require ticket information on activation No On activation, require Azure MFA Yes Require approval to activate No Approvers None

Reference: <https://docs.microsoft.com/en-us/azure/active-directory/privileged-identity-management/pim-how-to-add-role->



to-user?tabs=new

QUESTION 3

You have an Azure Active Directory (Azure AD) tenant that contains a user named User1 and the conditional access policies shown in the following table.

Name	Status	Conditional access requirement
CAPolicy1	On	Users connect from a trusted IP address.
CAPolicy2	On	Users' devices are marked as compliant.
CAPolicy3	Report-only	The sign-in risk of users is low.

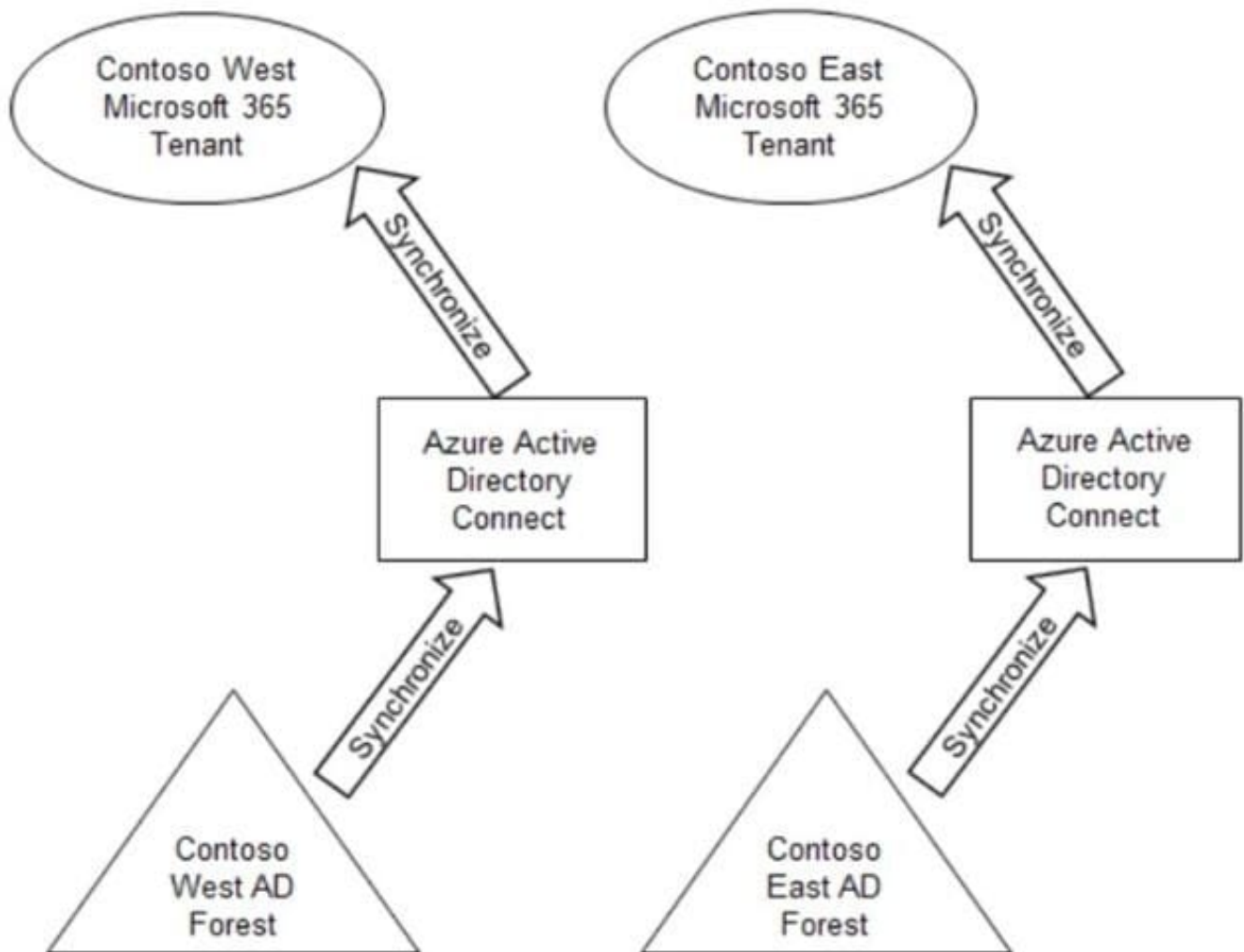
You need to evaluate which policies will be applied to User1 when User1 attempts to sign-in from various IP addresses. Which feature should you use?

- A. Access reviews
- B. Identity Secure Score
- C. The What If tool
- D. the Microsoft 365 network connectivity test tool

Correct Answer: C

QUESTION 4

Your company has two divisions named Contoso East and Contoso West. The Microsoft 365 identity architecture for both divisions is shown in the following exhibit.



You need to assign users from the Contoso East division access to Microsoft SharePoint Online sites in the Contoso West tenant. The solution must not require additional Microsoft 365 licenses. What should you do?

- A. Configure Azure AD Application Proxy in the Contoso West tenant.
- B. Invite the Contoso East users as guests in the Contoso West tenant.
- C. Deploy a second Azure AD Connect server to Contoso East and configure the server to sync the Contoso East Active Directory forest to the Contoso West tenant.
- D. Configure the existing Azure AD Connect server in Contoso East to sync the Contoso East Active Directory forest to the Contoso West tenant.

Correct Answer: B

QUESTION 5

You have an Azure AD tenant that contains two users named User1 and User2. You plan to perform the following actions:



1.

Create a group named Group1.

2.

Add User1 and User2 to Group1.

3.

Assign Azure AD roles to Group1.

You need to create Group1.

Which two settings can you use? Each correct answer presents a complete solution.

NOTE: Each correct selection is worth one point.

- A. Group type: Microsoft 365 - Membership type: Assigned
- B. Group type: Security - Membership type: Assigned
- C. Group type: Security - Membership type: Dynamic User
- D. Group type: Microsoft 365 - Membership type: Dynamic User
- E. Group type: Security - Membership type: Dynamic Device

Correct Answer: AB

[SC-300 VCE Dumps](#)

[SC-300 Practice Test](#)

[SC-300 Exam Questions](#)