



S10-210^{Q&As}

Storage Networking Management and Administration

Pass SNIA S10-210 Exam with 100% Guarantee

Free Download Real Questions & Answers **PDF** and **VCE** file from:

<https://www.pass4itsure.com/s10-210.html>

100% Passing Guarantee
100% Money Back Assurance

Following Questions and Answers are all new published by SNIA
Official Exam Center

- ⚙️ **Instant Download** After Purchase
- ⚙️ **100% Money Back** Guarantee
- ⚙️ **365 Days** Free Update
- ⚙️ **800,000+** Satisfied Customers



**QUESTION 1**

A business critical enterprise resource planning (ERP) system uses a central database at a company's primary data center. The company has built an out-of-region disaster recovery data center and intends to implement a standby ERP system with an eight hour RTO and 30 minute RPO.

Which architectural approach to implement service continuity for the ERP database will meet the RTO and RPO targets?

- A. Implement asynchronous replication of the ERP database, application, and middle tiers to ensure the ERP system is back online with less than 30 minutes of data loss within eight hours of an event.
- B. Implement asynchronous replication of the ERP database, application, and middle tiers to ensure the ERP system is back online with less than eight hours of data loss within 30 minutes of an event.
- C. Perform daily full database backups to tape and overnight ship the backup tape media from one data center to the other to ensure the ERP system is back online with less than eight hours of data loss within 30 minutes of an event.
- D. Implement synchronous database replication and configure application logic to ensure transactions are identical in both data centers as the recovery objectives do not allow for any inflight data loss.

Correct Answer: A

QUESTION 2

Which type of a backup changes the archive bit?

- A. Full
- B. Differential
- C. Incremental
- D. Block-level

Correct Answer: C

QUESTION 3

Your company does a full backup on Sunday night and incremental backups from Monday through Saturday at midnight. The full backup requires two tapes and each incremental backup requires one tape. There is a system failure Wednesday morning.

How many tapes will be used to restore to the most current backup?

- A. 1
- B. 3
- C. 4



D. 8

Correct Answer: C

QUESTION 4

A server with a dual-ported HBA loses access to storage during switch SFP replacement. You want to prevent this from happening in the future.

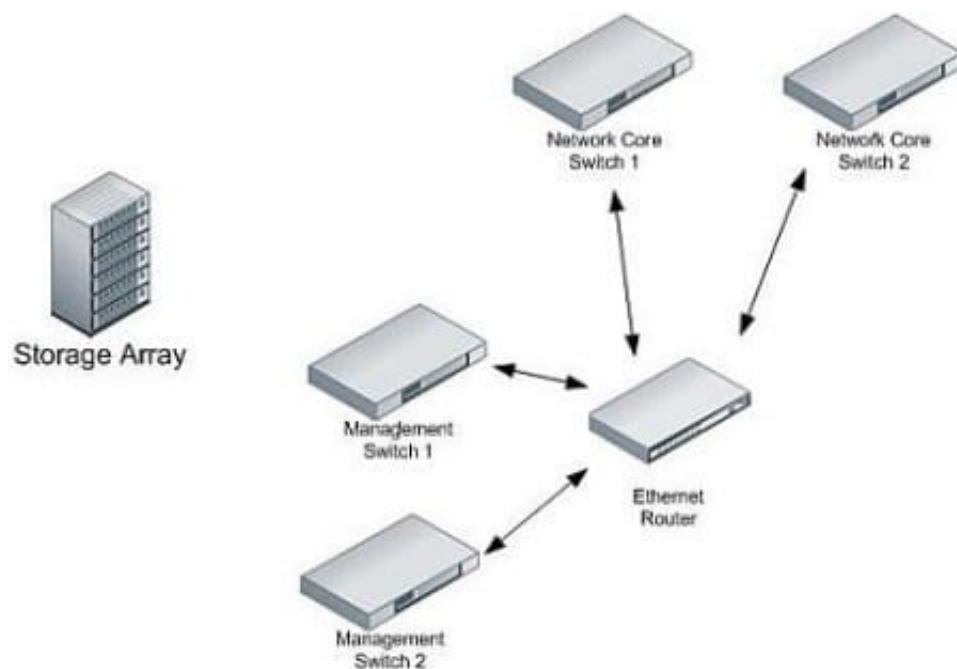
Which action should you perform?

- A. Use zoning
- B. Enable trunking.
- C. Use LUN masking
- D. Configure multipathing

Correct Answer: D

QUESTION 5

Click the Exhibit button.



Your company has purchased a new storage array that has dual management access network ports. You need to connect the array and provide maximum redundancy without affecting production traffic. Referring to the exhibit, where should the ports be attached?

- A. Cable one management access network port into management switch 1 and the other port into management switch 2.



- B. Cable both management access network ports into management switch 2.
- C. Cable one management access network port into core switch 1 and the other into core switch 2.
- D. Cable both management access network ports into management switch 1.

Correct Answer: A

[S10-210 Practice Test](#)

[S10-210 Study Guide](#)

[S10-210 Braindumps](#)