



QV_DEVELOPER_01^{Q&As}

QlikView 11 Developer Certification Examination

Pass QlikView QV_DEVELOPER_01 Exam with 100% Guarantee

Free Download Real Questions & Answers **PDF** and **VCE** file from:

https://www.pass4itsure.com/qv_developer_01.html

100% Passing Guarantee
100% Money Back Assurance

Following Questions and Answers are all new published by QlikView
Official Exam Center

- ⚙️ **Instant Download** After Purchase
- ⚙️ **100% Money Back** Guarantee
- ⚙️ **365 Days** Free Update
- ⚙️ **800,000+** Satisfied Customers



**QUESTION 1**

A customer is building a dashboard to measure the performance of the support organization. The customer needs to dynamically sort the Ticket Severity field by Severity Weight field when the Ticket Severity columnheader is double-clicked in StraightTable charts. Example ticket severities. Urgent = 1 High = 2 Normal = 3 Low = 4

Which QlikView load script function can the developer use to create the Ticket Severity field to meet the customer's needs?

- A. Rank([Ticket Severity], [Severity Weight]) AS [Ticket Severity]
- B. Num([Severity Weight], [Ticket Severity]) AS [Ticket Severity]
- C. Sort([Ticket Severity], [Severity Weight]) AS [Ticket Severity]
- D. Dual([Ticket Severity], [Severity Weight]) AS [Ticket Severity]

Correct Answer: D

QUESTION 2

A project to develop a QlikView application for a customer requires splitting developers into two teams.

One team will focus on developing source database query knowledge to create a reusable data layer.

There are several application-specific business rules for this project. The customer needs to incrementally accumulate history for the QlikView application over time.

The second team will focus on developing the presentation layer. This team also has data modeling and scripting expertise, but does not have source database query knowledge.

Which data loading strategy should the developers use on the project?

- A. create a series of QVWs that apply the business rules and then binary load them into the presentation layer QVW
- B. create the presentation layer QVW and connect directly to the source data and apply the business rules in the script
- C. create QVDs of the source data and load them into the presentation layer QVW and apply the business rules in the script
- D. create QVDs of the source data, apply the business rules and store a second layer of QVDs, and then load these QVDs into the presentation layer QVW

Correct Answer: D

QUESTION 3

A developer needs to add data from a Microsoft Access database to a data model intended to run on a 64



bit Windows server.

How should the developer proceed?

A. from the script editor, on the Data tab, under Database, choose '\\ODBC\\' from the Database pull down, assure the '\\Force 32 bit\\' check box is selected, and then click the '\\Connect\\' button

B. from the script editor, on the Data tab, under Database, choose '\\ODBC 32 bit\\' from the Database pull down and then click the '\\Connect\\' button

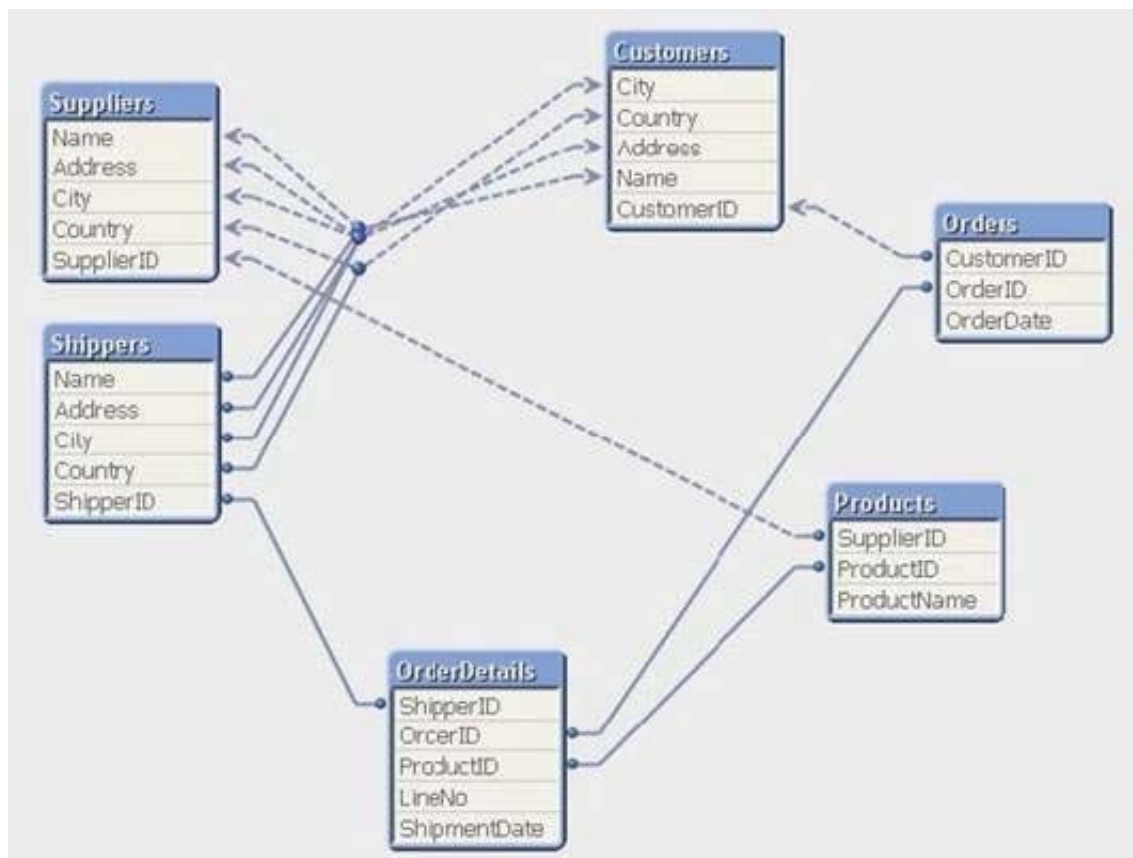
C. from the script editor, on the Data tab, click on the '\\database conversion\\' button and convert the database from a 32 bit to 64 bit database

D. from the script editor, on the Data tab, under Database choose '\\ODBC\\' from the Database pull down and then click the '\\Connect\\' button

Correct Answer: A

QUESTION 4

A customer has an Actual sales fact table aggregated at the transactional level and a Budgeted sales fact table aggregated at the monthly level. The tables share many of the same dimensional fields.



How can a developer form the data model?

A. qualify both tables and Unqualify all shared fields



- B. left join the Budgeted sales table onto the fact table using Month as the key
- C. concatenate Load the Budgeted sales table into the Actual sales table loading shared fields as NULL
- D. create a link table containing the dimensional fields then link each fact table using a concatenated key

Correct Answer: D

QUESTION 5

A customer created 20 expressions that will be used repetitively throughout a QlikView application. These expressions could appear in more than 50 objects located on 15 tabs.

How can a developer efficiently apply and maintain these expressions?

- A. create the required expression in each object as needed and edit them in the Expression Overview
- B. load the text for each expression from a text file into a table in the data model and link it to the fact table
- C. create a table of indices and expression text and use the index value in place of the expression text in each object
- D. create a variable for each expression that contains the expression text and use the variable in place of the expression in each object

Correct Answer: D

[Latest
QV_DEVELOPER_01
Dumps](#)

[QV_DEVELOPER_01 PDF
Dumps](#)

[QV_DEVELOPER_01
Braindumps](#)