



PW0-250^{Q&As}

Certified Wireless Design Professional (CWDP)

Pass CWNP PW0-250 Exam with 100% Guarantee

Free Download Real Questions & Answers **PDF** and **VCE** file from:

<https://www.pass4itsure.com/pw0-250.html>

100% Passing Guarantee
100% Money Back Assurance

Following Questions and Answers are all new published by CWNP
Official Exam Center

- ⚙️ **Instant Download** After Purchase
- ⚙️ **100% Money Back** Guarantee
- ⚙️ **365 Days** Free Update
- ⚙️ **800,000+** Satisfied Customers



**QUESTION 1**

Use the exhibit as a reference.

Tx Power Level Assignment

| | |
|------------------------|---|
| Current Tx Power Level | 4 |
| Assignment Method | <input type="radio"/> Global |
| | <input checked="" type="radio"/> Custom |
| | <div><div>4</div><div>1</div><div>2</div><div>3</div><div>4</div><div>5</div><div>6</div><div>7</div><div>8</div></div> |

Given:

-In your regulatory domain, a Tx Power Level of "1" is equivalent to 17 dBm.

-For every integer increment (e.g. from 1 to 2) to the Tx Power Level, the AP's transmit power is halved.

In units of mW, what is the actual transmit power for an AP configured at a Tx Power Level of "4"?

- A. 200 mW
- B. 50 mW
- C. 12.5 mW
- D. 8 mW
- E. 6.25 mW
- F. 2.5 mW

Correct Answer: E

QUESTION 2

As you plan a WLAN upgrade, you have assessed the network requirements and data signatures of your applications. One of the popular applications used on your network requires high bandwidth and low to medium Wi-Fi loss, but can tolerate moderate latency and jitter.

What application matches this description?

- A. FTP



- B. Email
- C. Skype chat
- D. Voice
- E. Video conferencing
- F. Video-on-demand

Correct Answer: F

QUESTION 3

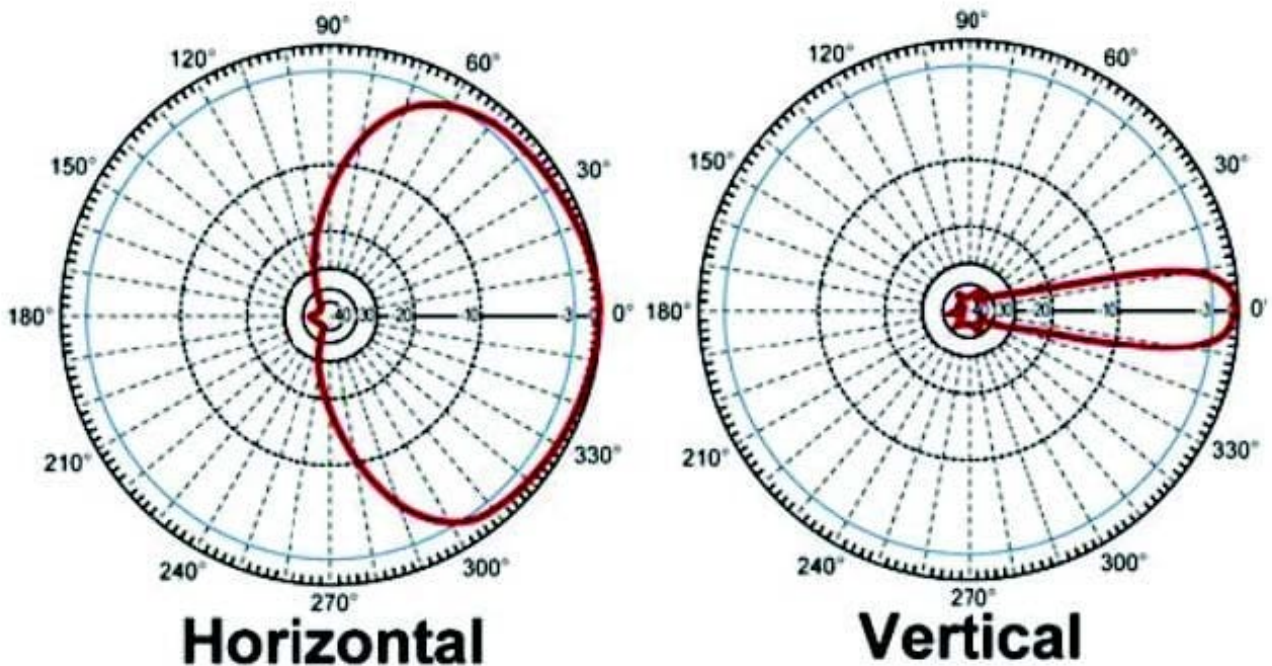
Given: A WLAN controller is connected to ABC Company's core layer 3 Ethernet switch with an IEEE 802.1Q trunk connection. The WLAN controller's native VLAN is VLAN 6 and its IP address is 10.0.14.2 /24. Lightweight APs supporting centralized forwarding are connected to the network on VLANs 7, 8, and 9, and they each build a layer 3 tunnel back to the WLAN controller's IP address. The dynamically assigned IP addresses received by each AP from a DHCP server will be .

- A. Associated with the VLAN on which they are connected.
- B. Associated with the native VLAN of the WLAN controller.
- C. Associated with VLAN 1, the default VLAN for new APs
- D. Associated with a non-routable VLAN until the MAC address of the AP is removed from the controller's MAC filter

Correct Answer: A

QUESTION 4

The exhibit illustrates the azimuth and elevation for what type of antenna?

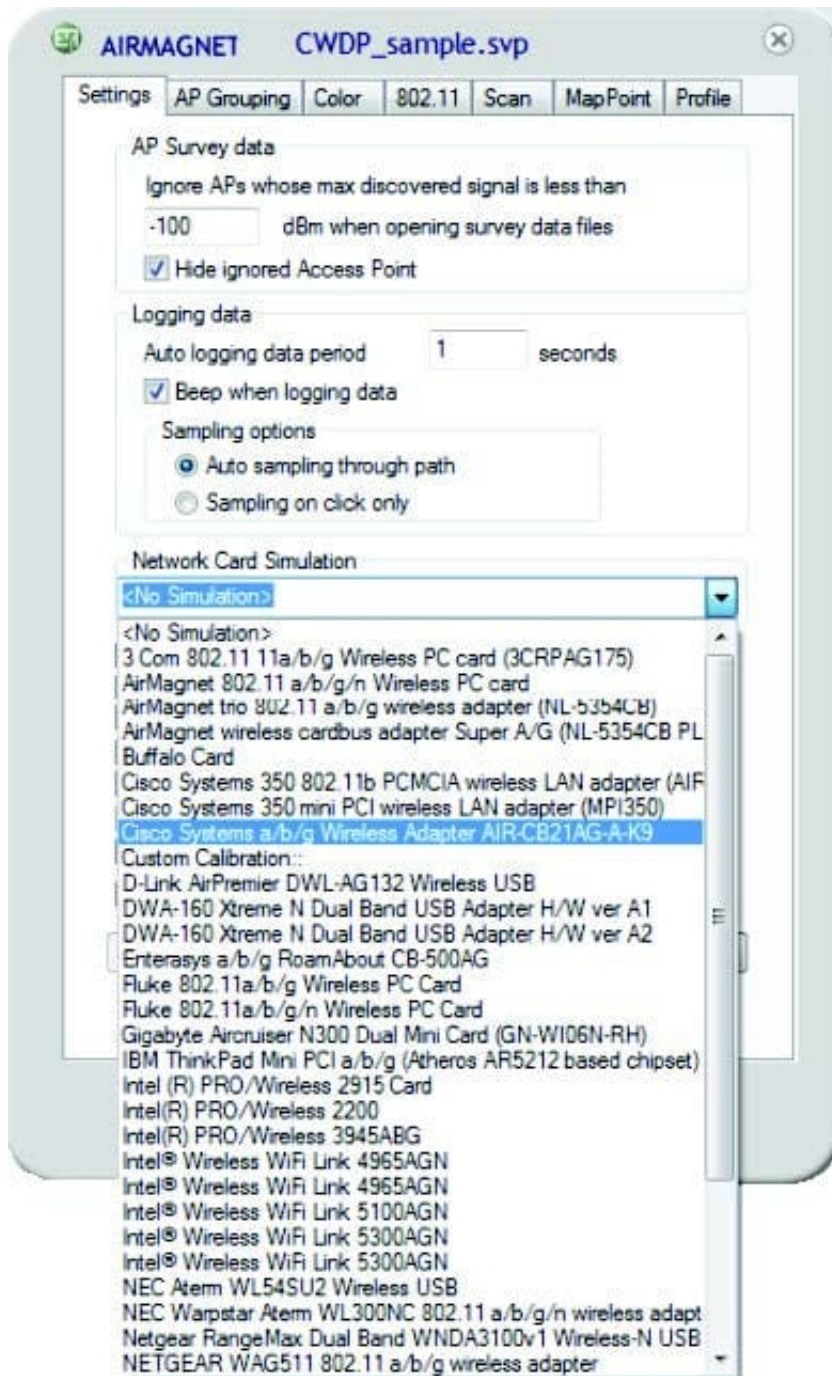


- A. Omni-directional
- B. 20 degree vertical yagi
- C. 120 degree horizontal sector
- D. 60 degree horizontal patch
- E. 10 degree vertical grid

Correct Answer: C

QUESTION 5

While configuring your site survey software for an upcoming manual survey project, you notice the configuration option for "Network Card Simulation" as shown in the exhibit.



A. This setting allows the site survey software to convert the AP's measured downlink RF data into a simulated data set as if the same data were transmitted by a specific client station. It is useful for determining uplink client performance when clients are located far from APs as well as projecting cell size for ad hoc networks.

B. Since WLAN adapters are not typically calibrated by manufacturers, this setting is a form of software calibration in which you can calibrate an (uncalibrated) adapter to match one of the calibrated adapters shown in the list. This process improves the reliability of RF data collection and reporting when uncalibrated adapters are used.

C. This is the configuration area in which you specify the adapter type that will be used for the site survey so that the survey software can interpret that adapter's reported metrics (based on proprietary formulas) into an RF measurement that is standardized by the survey software and known to its users. This is done for every survey.

D. The site survey software manufacturer allows you to view the collected RF data as if it were collected by a different



type of adapter. This functionality allows you to review survey data to determine how the RF environment will likely look based on the receive sensitivity and other RF capabilities of a specific client adapter.

Correct Answer: D

[Latest PW0-250 Dumps](#)

[PW0-250 VCE Dumps](#)

[PW0-250 Braindumps](#)